



PARD products speak for themselves.

Sometimes a product will say more about a business than any other promotional material. In some cases, the colour, the finish or simply the overall look and feel of this product will strike you as unique or different level of manufacturing quality.

Pard products belong to this category of products; they turn heads, attract the knowledgeable eye and speak volumes of the brand's commitment to high standards of manufacturing. In fact, we shouldn't really need to be telling you this. If you are reading this, you have probably already been charmed by one of Pard's products. Need we say any more?

Socket & Bit

1. General Hand Tools and Accessories.
2. Auto Repair Tools and Accessories.
3. Including Bits, Socket Bits, Sockets, Ratchets, Set and other Accessories.

Features of the Products

As with Pard products, our socket and bit series come with eye-catching colour printed finishes. This extra design attribute makes each tool instantly recognizable and turn helps the worker select and find the right tool in a matter of seconds. The Red and Black colours also help distinguish between a multitude of tool sizes. The cosmetic make-over of each tool has become Pard's signature proposition. As far as the extensive range of items on offer and the quality of the tools, needless to say that Pard is committed to lead through example.



深圳市泛亚精密工具贸易部 0755-28198770
 郑州泛亚精密仪器有限公司 13783573175
 深圳市奇达精工科技有限公司 0755-28151781
 总部：中國深圳市龍華新區民治大道540號威華大廈A區607室
 TEL：86 755 28151781 FAX：86 755 28151702
 E-mail：fanyaa@fanyaa.com 泛亚：www.fanyaa.com
 奇达精工：http://www.wiztank.com.cn

Application

- General Hand Tools
- General Auto Repair Hand Tools



Features of the Products

Special printing finish to make the products more noticeable.
 Two colour print on product surface to differentiate tools sizes.



Contents

- 1/4", 3/8", 1/2", 3/4", and 1" Bit _____
- 1/4", 3/8", 1/2", 3/4", and 1" Socket Bit _____
- 1/4", 3/8", 1/2", 3/4", and 1" Sockets _____
- 1/4", 3/8", 1/2", 3/4", and 1" Deep Sockets _____
- 1/4", 3/8", 1/2", 3/4", and 1" Ratchets _____
- 1/4", 3/8", 1/2", 3/4", and 1" Extensions _____
- 1/4", 3/8", 1/2", 3/4", and 1" Bit Sets _____
- 1/4", 3/8", 1/2", 3/4", and 1" Socket Bit Sets _____
- 1/4", 3/8", 1/2", 3/4", and 1" Socket Sets _____
- 1/4", 3/8", 1/2", 3/4", and 1" Accessories _____



2101 10 件带 1/4" 孔内五星旋具头组套
10 pcs Five-sided Star Tamperproof Bit Set

PARD NO.	(g)	12 / 144
2101	98	12 / 144
Contents:		
12525 10 ... 50	9 - Five-sided Star Tamperproof Bit TS10; TS15; TS20; TS25; TS27; TS30; TS40; TS45; TS50	
C81022	1 - Bit Holder 1/4" (F)×1/4" (M)	



2111 11 件 1/4" 旋具头组套
11 pcs 1/4" Bit Set

PARD NO.	(g)	120
2111	140	120
Contents: 1/4" DR.		
12125 0 ... 3	4 - Phillips Bit (25mmL) PH.0; PH.1; PH.2; PH.3	
12225 0 ... 3	4 - Pozidriv Bit (25mmL) PZ.0; PZ.1; PZ.2; PZ.3	
12325 055 ...065	2 - Slotted Bit (25mmL) 1.0×5.5; 1.2×6.5	
C81260Q	1 - Magnetic QR Bit Holder 1/4" Hex - 1/4" Inhex	



2113 11 件 1/4" 内六角旋具头组套
11 pcs 1/4" Star Bit Set

PARD NO.	(g)	100
2113	140	100
Contents: 1/4" DR.		
12625 07 ... 40	10 - 1/4" Star Bit (25mmL) T7; T8; T9; T10; T15; T20; T25; T27; T30; T40	
C81260Q	1 - Magnetic QR Bit Holder 1/4" Hex - 1/4" Inhex	



2114 11 件 1/4" 内六角旋具头组套
11 pcs 1/4" Star Bit Set

PARD NO.	(g)	12 / 144
2114	126	12 / 144
Contents:		
12625 07 ... 40	9 - 1/4" Star Bit (25mmL) T7; T8; T9; T10; T15; T20; T25; T30; T40	
C81022	1 - Bit Holder 1/4" (F)×1/4" (M)	
C81260Q	1 - Magnetic QR Bit Holder 1/4" Hex - 1/4" Inhex	



2102 10 件 1/4" 带孔内五星旋具头组套
10 pcs Five-sided Star Tamperproof Bit Set

PARD NO.	(g)	12 / 144
2102	138	12 / 144
Contents:		
12525 10 ... 50	9 - Five-sided Star Tamperproof Bit TS10; TS15; TS20; TS25; TS27; TS30; TS40; TS45; TS50	
802221	1 - 1/4" DR. Mini Ratchet Handle 72 Teeth	



2112 11 件 1/4" 旋具头组套
11 pcs 1/4" Bit Set

PARD NO.	(g)	120
2112	145	120
Contents: 1/4" DR.		
12125 1 ... 3	4 - Phillips Bit (25mmL) PH.1; PH.2; PH.2; PH.3	
12225 1 ... 3	4 - Pozidriv Bit (25mmL) PZ.1; PZ.2; PZ.2; PZ.3	
12325 055 ...065	2 - Slotted Bit (25mmL) 1.0×5.5; 1.2×6.5	
C81260Q	1 - Magnetic QR Bit Holder 1/4" Hex - 1/4" Inhex	



2113T 11 件 1/4" 带孔内六角旋具头组套
11 pcs 1/4" Star Tamperproof Bit Set

PARD NO.	(g)	120
2113T	145	120
Contents: 1/4" DR.		
12725 07 ... 40	10 - 1/4" Star Tamperproof Bit (25mmL) T-7H; T-8H; T-9H; T-10H; T-15H; T-20H; T-25H; T-27H; T-30H; T-40H	
C81260Q	1 - Magnetic QR Bit Holder 1/4" Hex - 1/4" Inhex	



2114T 11 件 1/4" 带孔内六角旋具头组套
11 pcs 1/4" Star Tamperproof Bit Set

PARD NO.	(g)	12 / 144
2114T	126	12 / 144
Contents:		
12725 07 ... 40	9 - 1/4" Star Tamperproof Bit (25mmL) T-7H; T-8H; T-9H; T-10H; T-15H; T-20H; T-25H; T-30H; T-40H	
C81022	1 - Bit Holder 1/4" (F)×1/4" (M)	
C81260Q	1 - Magnetic QR Bit Holder 1/4" Hex - 1/4" Inhex	

套筒/旋具头系列 SOCKET / BIT series



2115 11 件 1/4" 旋具头组套
11 pcs Bit Set

PARD NO.	(g)	
2115	127	12 / 144

Contents:

12125 1 ... 3	3 - 1/4" Phillips Bit
	PH.1; PH.2; PH.3
12225 1 ... 3	3 - 1/4" Pozidriv Bit
	PZ.1; PZ.2; PZ.3
12325 04 ... 6.5	3 - 1/4" Slotted Bit
	0.8x4; 1.0x5.5; 1.2x6.5
C81260Q	1 - Magnetic QR Bit Holder
	1/4" Hex - 1/4" Inhex
C81022	1 - Bit Holder
	1/4" (F)x1/4" (M)



2122 12 件 1/4" 旋具头棘轮扳手组套
12 pcs Bit Ratchet Set

PARD NO.	(g)	
2122	200	6/72

Contents:

802221	1 - Mini Ratchet
C81260Q	1 - Magnetic QR Bit Holder
	1/4" Hex - 1/4" Inhex
12125 0 ... 2	3 - Phillips Bit (25mmL)
	PH.0; PH.1; PH.2
12325 04 ... 065	3 - Slotted Bit (25mmL)
	0.8x4; 1.0x5.5; 1.2x6.5
12425 03 ... 04	2 - Hex Bit (25mmL)
	Size (mm) 3; 4;
12625 10 ... 15	2 - Star Bit (25mmL)
	T10; T15



S2131 13 件 1/4" 六方套筒加支架组套
13 pcs 1/4" DR. 6pt. Flank Socket Set

PARD NO.	(g)	
S2131	275	60

Contents: 1/4" DR.

S525 04 ... 14	13 - 6pt Flank Socket
	Size (mm) 4; 4.5; 5; 5.5; 6; 7; 8; 9; 10; 11;
	12; 13; 14



S2141 14 件 1/4" 多用型十二槽套筒组套
14 pcs 1/4" DR. 12pt. MIT Socket Set

PARD NO.	(g)	
S2141	300	48

Contents: 1/4" DR.

S524 032 ... 14	14 - MIT 1/4" Socket
	Size (mm) 3.2; 4; 4.5; 5; 5.5; 6; 7; 8; 9;
	10; 11; 12; 13; 14
	Size (inch) 1/8; 5/32; 3/16; 7/32; 9/32; 5/16;
	11/32; 3/8; 7/16; 15/32; 1/2; 9/16
	Star E4; E5; E6; E7; E8; E10; E11;
	E12; E14; E16; E18



S2171 17 件 1/4" 六方套筒加旋具头组套
17 pcs 1/4" Socket & Bit Set

PARD NO.	(g)	
S2171	145	120

Contents: 1/4" DR.

S525 05 ... 10	6 - 6pt Flank Socket
	Size (mm) 5; 6; 7; 8; 9; 10
12125 1 ... 3	3 - Phillips Bit (25mmL)
	PH.1; PH.2; PH.3
12225 1 ... 3	3 - Pozidriv Bit (25mmL) PZ.1; PZ.2; PZ.3
12325 04 ... 065	3 - Slotted Bit (25mmL)
	0.8x4; 1.0x5.5; 1.2x6.5
C8092225	1 - Bit Adaptor 1/4" Hex - 1/4" Inhex
C81260Q	1 - Magnetic QR Bit Holder
	1/4" Hex - 1/4" Inhex



2213 21 件 1/4" 旋具头组套
21 pcs 1/4" Bit Set

PARD NO.	(g)	
2213	130	120

Contents: 1/4" DR.

12125 1 ... 3	3 - Phillips Bit (25mmL)
	PH.1; PH.2; PH.3
12225 1 ... 3	3 - Pozidriv Bit (25mmL)
	PZ.1; PZ.2; PZ.3
12325 04 ... 065	3 - Slotted Bit (25mmL)
	0.8x4; 1.0x5.5; 1.2x6.5
12425 03 ... 06	4 - Hex Bit (25mmL)
	Size (mm) 3; 4; 5; 6
12625 08 ... 30	7 - Star Bit (25mmL)
	T8; T10; T15; T20; T25; T27; T30
C81260Q	1 - Magnetic QR Bit Holder
	1/4" Hex - 1/4" Inhex



2611 61 件 1/4" 旋具头组套
61 pcs 1/4" Bit Set

PARD NO.	(g)	
2611	520	30

Contents: 1/4" DR.

12125 1 ... 3	23 - 1/4" Phillips Bit (25mmL)
	PH.1x7 pc; PH.2x13 pc;
	PH.3x3pc
12225 1 ... 3	23 - 1/4" Pozidriv Bit (25mmL)
	PZ.1x7 pc; PZ.2x13 pc;
	PZ.3x3 pc
12325 04 ... 065	3 - Slotted Bit (25mmL)
	0.8x4; 1.0x5.5; 1.2x6.5
12425 03 ... 06	4 - Hex Bit (25mmL)
	Size (mm) 3; 4; 5; 6
12625 08 ... 40	7 - Star Bit (25mmL)
	T10; T20; T15; T25; T27; T30; T40
C81260Q	1 - Magnetic QR Bit Holder
	1/4" Hex - 1/4" Inhex



C2201 20 件 1/4" 六星套筒组套
20 pcs 1/4" Socket Set

PARD NO.	(g)	
C2201	900	20
Contents: 1/4" DR.		
S525 04 ... 14		13 - 6pt Flank Socket
	Size (mm)	4; 4.5; 5; 5.5; 6; 7; 8; 9; 10; 11; 12; 13; 14
80222		1 - 72Teeth Round Ratchet Handle
C8143		1 - Spinner
C8032115		1 - Sliding T Handle
C80521		1 - Universal Joint
C81225		1 - Magnetic Socket Pick-up
C8042 050 ... 150		2 - Extension Bar 2"; 6"



C2211 21 件 1/4" 多用型十二槽套筒组套
21 pcs 1/4" MIT Socket Set

PARD NO.	(g)	
C2211	965	10
Contents: 1/4" DR.		
S524 032 ... 14		14 - 12pt MIT Socket
	Size (mm)	3.2; 4; 4.5; 5; 5.5; 6; 7; 8; 9; 10; 11; 12; 13; 14
	Size (inch)	1/8; 5/32; 3/16; 7/32; 9/32; 5/16; 11/32; 3/8; 7/16; 15/32; 1/2; 9/16
	Star	E4; E5; E6; E7; E8; E10; E11; E12; E14; E16; E18
80222		1 - 72Teeth Round Ratchet Handle
C8143		1 - Spinner
C8032115		1 - Sliding T Handle
C80521		1 - Universal Joint
C81225		1 - Magnetic Socket Pick-up
C8042 050 ... 150		2 - Extension Bar 2"; 6"



C2201

PARD NO.	
80222	1 - 72 Teeth Ratchet Handle



C2201-4

PARD NO.	
80224	1 - 20 Teeth Ratchet Handle



C2211

PARD NO.	
80222	1 - 72 Teeth Ratchet Handle



C2211-3

PARD NO.	
80223	1 - 72 Teeth Flexible Round Ratchet Handle



C2201-1

PARD NO.	
80221	1 - 24 Teeth Ratchet Handle



C2201-9

PARD NO.	
80229	1 - 60 Teeth Ratchet Handle



C2211-1

PARD NO.	
80221	1 - 24 Teeth Ratchet Handle



C2211-4

PARD NO.	
80224	1 - 20 Teeth Ratchet Handle



C2201-3

PARD NO.	
80223	1 - 72 Teeth Flexible Round Ratchet Handle



C2211-9

PARD NO.	
80229	1 - 60 Teeth Ratchet Handle



C2212 21 件 1/4" 六星套筒组套
21 pcs 1/4" Socket Set

PARD NO.	(g)	
C2212	965	20

Contents: 1/4" DR.

S525 04 ... 14	13-6pt. Flank Socket
	Size (mm) 4; 4.5; 5; 5.5; 6; 7; 8; 9; 10; 11; 12; 13; 14
C8042050	1 - Extension 50 - 2"
C8143	1 - Spinner 150 - 6"
C80521	1 - Universal Joint
80228	1 - Ratchet Head
P80228	1 - Head
C81022	1 - Magnetic Bit Holder
8042250P	1 - 1/4" Speed Extension 10"
C8032115	1 - Sliding T Handle



2311 31 件 1/4" 旋具头组套
31 pcs 1/4" Bit Set

PARD NO.	(g)	
2311	300	48

Contents: 1/4" DR.

12125 0 ... 3	6 - 1/4" Phillips Bit (25mmL) PH.0; PH.1×2 pc; PH.2×2 pc; PH.3
12225 1 ... 3	5 - 1/4" Pozidriv Bit (25mmL) PZ.1×2 pc; PZ.2×2 pc; PZ.3
12325 04 ... 065	3 - 1/4" Slotted Bit (25mmL) 0.8×4; 1.0×5.5; 1.2×6.5
12425 03 ... 06	4 - 1/4" Hex Bit (25mmL) Size (mm) 3; 4; 5; 6
12625 05 ... 40	12 - 1/4" Star Bit (25mmL) T5; T6; T7; T8; T9; T10; T15; T20; T25; T27; T30; T40
C81260Q	1 - Magnetic QR Bit Holder 1/4" Hex - 1/4" Inhex



2312 31 件 1/4" 旋具头组套
31 pcs 1/4" Bit Set

PARD NO.	(g)	
2312	300	48

Contents: 1/4" DR.

12125 1 ... 3	10 - 1/4" Phillips Bit (25mmL) PH.1×2pc; PH.2×5pc; PH.3×3pc
12225 1 ... 3	10 - 1/4" Pozidriv Bit (25mmL) PZ.1×2pc; PZ.2×5pc; PZ.3×3pc
12325 04 ... 065	10 - 1/4" Slotted Bit (25mmL) 0.8×4*2pc; 1.0×5.5*5pc; 1.2×6.5*3pc
C81260Q	1 - Magnetic QR Bit Holder 1/4" Hex - 1/4" Inhex



2321 32 件 1/4" 旋具头组套
32 pcs 1/4" Bit Set

PARD NO.	(g)	
2321	310	48

Contents: 1/4" DR.

12125 0 ... 3	6 - 1/4" Phillips Bit (25mmL) PH.0; PH.1×2pc; PH.2×2pc; PH.3
12225 1 ... 3	5 - 1/4" Pozidriv Bit (25mmL) PZ.1×2pc; PZ.2×2pc; PZ.3
12325 04 ... 065	3 - 1/4" Slotted Bit (25mmL) 0.8×4; 1.0×5.5; 1.2×6.5
12425 02 ... 06	6 - Hex Bit (25mmL) Size (mm) 2; 2.5; 3; 4; 5; 6
12625 06 ... 30	9 - Star Bit (25mmL) T6; T7; T8; T9; T10; T15; T20; T25; T30
C81260Q	1 - Magnetic QR Bit Holder 1/4" Hex - 1/4" Inhex
802221	1 - Mini Bit Ratchet Handle - 72 Teeth
8092225	1 - Bit Adaptor (25mmL) 1/4" Hex - 1/4" Sq



2322 32 件 1/4" 旋具头组套
32 pcs 1/4" Bit Set

2323 32 件 1/4" 旋具头组套
32 pcs 1/4" Bit Set

S2371 37 件 1/4" 套六角筒组套
37 pcs 1/4" Socket Set

S2491 49 件 1/4" 六角套筒及旋具套头组套
49 pcs 1/4" Socket & Socket Bit Set

PARD NO.	(g)	
2322	310	48

PARD NO.	(g)	
2323	300	48

PARD NO.	(g)	
S2371	1270	12

PARD NO.	(g)	
S2491	1456	12

Contents: 1/4" DR.

12125 1 ... 3	10 - 1/4" Phillips Bit (25mmL) PH.1×2pc; PH.2×5pc; PH.3×3pc
12225 1 ... 3	9 - 1/4" Pozidriv Bit (25mmL) PZ.1×2pc; PZ.2×5pc; PZ.3×2pc
12325 04 ... 065	10 - 1/4" Slotted Bit (25mmL) 4mm×2pc; 5.5mm×5pc; 6.5mm×3pc
C81260Q	1 - Magnetic QR Bit Holder 1/4" Hex - 1/4" Inhex
802221	1 - Mini Bit Ratchet Handle - 72 Teeth
8092225	1 - Bit Adaptor (25mmL) 1/4" Hex - 1/4" Sq

Contents: 1/4" DR.

12125 1 ... 3	3 - Phillips Bit (25mmL) PH.1; PH.2; PH.3
12225 1 ... 3	3 - Pozidriv Bit (25 mmL) PZ.1; PZ.2; PZ.3
12325 04 ... 065	3 - Slotted Bit (25mmL) 0.8×4; 1.0×5.5; 1.2×6.5
12425 03 ... 08	5 - Hex Bit (25mmL) 3; 4; 5; 6; 8 mm
12625 08 ... 30	8 - Star Bit (25mmL) T8; T10; T15; T20; T25; T27; T30; T40
12725 08 ... 40	8 - Star Tamperproof Bit (25mmL) T-8H; T10H; T-15H; T-20H; T-25H; T-27H; T-30H; T40H
8092225	1 - Bit Adaptor 1/4" Hex - 1/4" Sq.
C81260Q	1 - Magnetic QR Bit Holder 1/4" Hex - 1/4" Inhex

Contents: 1/4" DR.

S525 04 ... 13	12 - 6pt Flank Socket Size (mm) 4; 4.5; 5; 5.5; 6; 7; 8; 9; 10; 11; 12; 13
C32132 1 ... 3	3 - Phillips Socket Bit PH.1; PH.2; PH.3
C32232 1 ... 3	3 - Pozidriv Socket Bit PZ.1; PZ.2; PZ.3
C32332 04 ... 065	3 - Slotted Socket Bit 4; 5.5; 6.5
C32432 03 ... 08	5 - Hex Socket Bit 3; 4; 5; 6; 8 mm
764-3	3 - Hex Key 3 In 1 1.5; 2; 2.5mm
80229	1 - 60 Teeth Ratchet Handle
C8032115	1 - Sliding T Handle
C80521	1 - Universal Joint
C81225	1 - Magnetic Socket Pick-up
C8042 050 ... 100	2 - Extension Bar 2"; 4"
8142	1 - Spinner 6"
8111	1 - Flexible Inhex Extension

Contents: 1/4" DR.

S525 04 ... 13	12 - 6pt Flank Socket Size (mm) 4; 4.5; 5; 5.5; 6; 7; 8; 9; 10; 11; 12; 13
C32132 0 ... 3	4 - Phillips Socket Bit PH.0; PH.1; PH.2; PH.3
C32232 0 ... 3	4 - Pozidriv Socket Bit PZ.0; PZ.1; PZ.2; PZ.3
C32332 04 ... 065	3 - Slotted Socket Bit 4; 5.5; 6.5
C32432 03 ... 10	7 - Hex Socket Bit 3; 4; 5; 6; 7; 8; 10 mm
C32632 08 ... 40	8 - Star Socket Bit T8; T10; T15; T20; T25; T27; T30; T40
764-3	3 - Hex Key 3 In 1 1.5; 2; 2.5mm
802220	1 - 72 Teeth Mini Ratchet Handle
C8032115	1 - Sliding T Handle
C80521	1 - Universal Joint
C81225	1 - Magnetic Socket Pick-up
C8042 050 ... 100	2 - Extension Bar 2"; 4"
8142	1 - Spinner 6"
8111	1 - Flexible Inhex Extension



S2491-23 49件 1/4" 六方套筒及旋具套头组套
49 pcs 1/4" Socket & Socket Bit Set

PARD NO.	(g)	
S2491-23	1456	12
Contents: 1/4" DR.		
S525 04 ... 13		12 - 6pt Flank Socket
	Size (mm)	4; 4.5; 5; 5.5; 6; 7; 8; 9; 10; 11; 12; 13
C32132 0 ... 3		4 - Phillips Socket Bit PH.0; PH.1; PH.2; PH.3
C32232 0 ... 3		4 - Pozidriv Socket Bit PZ.0; PZ.1; PZ.2; PZ.3
C32332 04 ... 065		3 - Slotted Socket Bit 4; 5.5; 6.5
C32432 03 ... 10		7 - Hex Socket Bit 3; 4; 5; 6; 7; 8; 10 mm
C32632 08 ... 40		8 - Star Socket Bit T8; T10; T15; T20; T25; T27; T30; T40
764-3		3 - Hex Key 3 In 1 1.5; 2; 2.5mm
802223		1 - 72 Teeth Mini Flexible Ratchet Handle
C8032115		1 - Sliding T Handle
C80521		1 - Universal Joint
C81225		1 - Magnetic Socket Pick-up
C8042 050 ... 100		2 - Extension Bar 2"; 4"
8142		1 - Spinner 6"
8111		1 - Flexible Inhex Extension



S2492 49件 1/4" 多用型 十二槽套筒及旋具套头组套
49 pcs 1/4" MIT Socket & Socket Bit Set

PARD NO.	(g)	
S2492	1456	12
Contents: 1/4" DR.		
S524 04 ... 13		12 - 12pt. MIT Socket
	Size (mm)	4; 4.5; 5; 5.5; 6; 7; 8; 9; 10; 11; 12; 13
	Size (inch)	5/32; 3/16; 7/32; 9/32; 5/16; 11/32; 3/8; 7/16; 15/32; 1/2
	Star	E5; E6; E7; E8; E10; E11; E12; E14; E16
C32132 0 ... 3		4 - Phillips Socket Bit PH.0; PH.1; PH.2; PH.3
C32232 0 ... 3		4 - Pozidriv Socket Bit PZ.0; PZ.1; PZ.2; PZ.3
C32332 04 ... 065		3 - Slotted Socket Bit 4; 5.5; 6.5
C32432 03 ... 10		7 - Hex Socket Bit 3; 4; 5; 6; 7; 8; 10 mm
C32632 08 ... 40		8 - Star Socket Bit T8; T10; T15; T20; T25; T27; T30; T40
764-3		3 - Hex Key 3 In 1 1.5; 2; 2.5mm
802220		1 - 72 Teeth Mini Ratchet Handle
C8032115		1 - Sliding T Handle
C80521		1 - Universal Joint
C81225		1 - Magnetic Socket Pick-up
C8042 050 ... 100		2 - Extension Bar 2"; 4"
8142		1 - Spinner 6"
8111		1 - Flexible Inhex Extension



S2492-23 49件 1/4" 多用型 十二槽套筒及旋具套头组套
49 pcs 1/4" MIT Socket & Socket Bit Set

PARD NO.	(g)	
S2492-23	1456	12
Contents: 1/4" DR.		
S524 04 ... 13		12 - 12pt. MIT Socket
	Size (mm)	4; 4.5; 5; 5.5; 6; 7; 8; 9; 10; 11; 12; 13
	Size (inch)	5/32; 3/16; 7/32; 9/32; 5/16; 11/32; 3/8; 7/16; 15/32; 1/2
	Star	E5; E6; E7; E8; E10; E11; E12; E14; E16
C32132 0 ... 3		4 - Phillips Socket Bit PH.0; PH.1; PH.2; PH.3
C32232 0 ... 3		4 - Pozidriv Socket Bit PZ.0; PZ.1; PZ.2; PZ.3
C32332 04 ... 065		3 - Slotted Socket Bit 4; 5.5; 6.5
C32432 03 ... 10		7 - Hex Socket Bit 3; 4; 5; 6; 7; 8; 10 mm
C32632 08 ... 40		8 - Star Socket Bit T8; T10; T15; T20; T25; T27; T30; T40
764-3		3 - Hex Key 3 In 1 1.5; 2; 2.5mm
802223		1 - 72 Teeth Mini Flexible Ratchet Handle
C8032115		1 - Sliding T Handle
C80521		1 - Universal Joint
C81225		1 - Magnetic Socket Pick-up
C8042 050 ... 100		2 - Extension Bar 2"; 4"
8142		1 - Spinner 6"
8111		1 - Flexible Inhex Extension



C2471 47 件 1/4" 六方套筒组套
47 pcs 1/4" Socket Set

PARD NO.	(g)	10
C2471	965	10
Contents: 1/4" DR.		
S525 04 ... 13	12 - 6pt Flank Socket	
	Size (mm)	4; 4.5; 5; 5.5; 6; 7; 8; 9; 10; 11; 12; 13
C32132 1 ... 3	3 - Phillips Socket Bit	
		PH.1; PH.2; PH.3
C32232 1 ... 3	3 - Pozidriv Socket Bit	
		PZ.1; PZ.2; PZ.3
C32332 04 ... 065	3 - Slotted Socket Bit	
		0.8x4; 1.0x5.5; 1.2x6.5
C32432 03 ... 10	7 - Hex Socket Bit	
		3; 4; 5; 6; 7; 8; 10 mm
C32632 08 ... 40	8 - Star Socket Bit	
		T8; T10; T15; T20; T25; T27; T30; T40
80222	1 - 72 Teeth Round Ratchet Handle	
C8143	1 - Spinner	
C8032115	1 - Sliding T Handle	
C80521	1 - Universal Joint	
C81225	1 - Magnetic Socket Pick-up	
C8042 050 ... 150	3 - Extension Bar 2"; 4"; 6"	
764 015 ... 025	3 - Hex Key 1.5; 2; 2.5 mm	



C2471

PARD NO.	1 - 72 Teeth Ratchet Handle
80222	1 - 72 Teeth Ratchet Handle



C2471-1

PARD NO.	1 - 24 Teeth Ratchet Handle
80221	1 - 24 Teeth Ratchet Handle



C2471-3

PARD NO.	1 - 72 Teeth Flexible Round Ratchet Handle
80223	1 - 72 Teeth Flexible Round Ratchet Handle



C2471-4

PARD NO.	1 - 20 Teeth Ratchet Handle
80224	1 - 20 Teeth Ratchet Handle



C2471-9

PARD NO.	1 - 60 Teeth Ratchet Handle
80229	1 - 60 Teeth Ratchet Handle



C2521 52 件 1/4" 六方套筒组套
52 pcs 1/4" Socket Set

PARD NO.	(g)	10
C2521	1300	10
Contents: 1/4" DR.		
S525 04 ... 13	12 - 6pt Flank Socket	
	Size (mm)	4; 4.5; 5; 5.5; 6; 7; 8; 9; 10; 11; 12; 13
S52550 06 ... 13	6 - 6pt Flank Deep Socket	
	Size (mm)	6; 7; 8; 10; 12; 13
12125 1 ... 3	3 - Phillips Bit (25mmL)	
		PH.1; PH.2; PH.3
12225 1 ... 3	3 - Pozidriv Bit (25mmL)	
		PZ.1; PZ.2; PZ.3
12525 04 ... 065	3 - Five-sided Star Tamperproof Bit	
	Size (mm)	4; 5.5; 6.5 (25mmL)
12425 03 ... 08	6 - Hex Bit	
	Size (mm)	3; 4; 5; 6; 7; 8
12625 08 ... 40	8 - Star Bit (25mmL)	
		T8; T10; T15; T20; T25; T27; T30; T40
80222	1 - 72Teeth Round Ratchet Handle	
C8143	1 - Spinner	
C8032115	1 - Sliding T Handle	
C80521	1 - Universal Joint	
C81225	1 - Magnetic Socket Pick-up	
C8042 050 ... 150	2 - Extension Bar 2"; 6"	
764 015 ... 025	3 - Hex Key 1.5; 2; 2.5 mm	
C81022	1 - Bit Holder	



C2521

PARD NO.	1 - 72 Teeth Ratchet Handle
80222	1 - 72 Teeth Ratchet Handle



C2521-1

PARD NO.	1 - 24 Teeth Ratchet Handle
80221	1 - 24 Teeth Ratchet Handle



C2521-3

PARD NO.	1 - 72 Teeth Flexible Round Ratchet Handle
80223	1 - 72 Teeth Flexible Round Ratchet Handle



C2521-4

PARD NO.	1 - 20 Teeth Ratchet Handle
80224	1 - 20 Teeth Ratchet Handle



C2521-9

PARD NO.	1 - 60 Teeth Ratchet Handle
80229	1 - 60 Teeth Ratchet Handle



C2531 53 件 1/4" 多用型十二槽套筒组套
53 pcs 1/4" MIT Socket Set

PARD NO.	(g)	10
Contents: 1/4" DR.		
S524 032 ... 14	14 - 12pt. MIT Socket	
Size (mm)	3.2; 4; 4.5; 5; 5.5; 6; 7; 8; 9; 10; 11; 12; 13; 14	
Size (inch)	1/8; 5/32; 3/16; 7/32; 9/32; 5/16; 11/32; 3/8; 7/16; 15/32; 1/2; 9/16	
Star	E4; E5; E6; E7; E8; E10; E11; E12; E14; E16; E18	
12125 1 ... 3	3 - Phillips Bit (25mmL) PH.1; PH.2; PH.3	
12225 1 ... 3	3 - Pozidriv Bit (25mmL) PZ.1; PZ.2; PZ.3	
12325 04 ... 065	3 - Slotted Bit (25mmL) 0.8x4; 1.0x5.5; 1.2x6.5	
12425 03 ... 08	11 - Hex Bit (25mmL) Size (mm) 3; 4; 5; 6; 7; 8	
12425 1.8 ... 1.4	Size (inch) 1/8; 5/32; 3/16; 7/32; 1/4	
12625 08 ... 40	8 - Star Bit (25mmL) T8; T10; T15; T20; T25; T27; T30; T40	
80222	1 - 72Teeth Round Ratchet Handle	
C8143	1 - Spinner	
C8032115	1 - Sliding T Handle	
C80521	1 - Universal Joint	
C81225	1 - Magnetic Socket Pick-up	
C8042 050 ... 150	2 - Extension Bar 2"; 6"	
C81022	1 - Bit Holder	
764 015 ... 025	3 - Hex Key 1.5; 2; 2.5 mm	



C2531

PARD NO.	1 - 72 Teeth Ratchet Handle
80222	



C2531-1

PARD NO.	1 - 24 Teeth Ratchet Handle
80221	



C2531-3

PARD NO.	1 - 72 Teeth Flexible Round Ratchet Handle
80223	



C2531-4

PARD NO.	1 - 20 Teeth Ratchet Handle
80224	



C2531-9

PARD NO.	1 - 60 Teeth Ratchet Handle
80229	



C2532 53 件 1/4" 多用型十二槽套筒组套
53 pcs 1/4" MIT Socket Set

PARD NO.	(g)	10
Contents: 1/4" DR.		
S524 032 ... 14	14 - 12pt. MIT Socket	
Size (mm)	3.2; 4; 4.5; 5; 5.5; 6; 7; 8; 9; 10; 11; 12; 13; 14	
Size (inch)	1/8; 5/32; 3/16; 7/32; 9/32; 5/16; 11/32; 3/8; 7/16; 15/32; 1/2; 9/16	
Star	E4; E5; E6; E7; E8; E10; E11; E12; E14; E16; E18	
C32132 0 ... 3	4 - Phillips Socket Bit PH.0; PH.1; PH.2; PH.3	
C32232 0 ... 3	4 - Pozidriv Socket Bit PZ.0; PZ.1; PZ.2; PZ.3	
C32332 04 ... 065	3 - Slotted Socket Bit 0.8x4; 1.0x5.5; 1.2x6.5	
C32432 03 ... 08	Size (mm) 10 - Hex Socket Bit 3; 4; 5; 6; 7; 8	
C32432 1.8 ... 1.4	Size (inch) 1/8; 5/32; 3/16; 7/32; 1/4	
C32632 08 ... 40	8 - Star Socket Bit T8; T10; T15; T20; T25; T27; T30; T40	
80222	1 - 72Teeth Round Ratchet Handle	
C8143	1 - Spinner	
C8032115	1 - Sliding T Handle	
C80521	1 - Universal Joint	
C81225	1 - Magnetic Socket Pick-up	
C8042 050 ... 150	2 - Extension Bar 2"; 6"	
C81022	1 - Bit Holder	
764 015 ... 025	3 - Hex Key 1.5; 2; 2.5 mm	



C2532

PARD NO.	1 - 72 Teeth Ratchet Handle
80222	



C2532-1

PARD NO.	1 - 24 Teeth Ratchet Handle
80221	



C2532-3

PARD NO.	1 - 72 Teeth Flexible Round Ratchet Handle
80223	



C2532-4

PARD NO.	1 - 20 Teeth Ratchet Handle
80224	



C2532-9

PARD NO.	1 - 60 Teeth Ratchet Handle
80229	

套筒/旋具头系列 SOCKET / BIT series



S2561 56件 1/4" 六方套筒及旋具套头组套
56 pcs 1/4" Socket & Socket Bit Set

PARD NO.	(g)	Box
S2561	1175	12

Contents: 1/4" DR.

PARD NO.	Icon	Description
S525 04 ... 13		12 - 6pt Flank Socket
	Size (mm)	4; 4.5; 5; 5.5; 6; 7; 8; 9; 10; 11; 12; 13
12125 0 ... 4		4 - Phillips Bit (25mm) PH.0; PH.1; PH.2; PH.3
12225 0 ... 3		4 - Pozidriv Bit (25mm) PZ.0; PZ.1; PZ.2; PZ.3
12325 04 ... 065		3 - Slotted Bit (25mm) 4; 5.5; 6.5
12425 015 ... 10		10 - Hex Bit (25mm) 1.5; 2; 2.5; 3; 4; 5; 6; 7; 8; 10
12625 06 ... 40		11 - Star Bit (25mm) T6; T7; T8; T9; T10; T15; T20; T25; T27; T30; T40
764-3		3 - Hex Key 3 In 1 1.5; 2; 2.5mm
802221		1 - 72 Teeth Mini Bit Ratchet Handle
C8032115		1 - Sliding T Handle
C80521		1 - Universal Joint
C81225		1 - Magnetic Socket Pick-up
C8042 050		2 - Extension Bar 2"
8142		1 - Spinner 6"
C81260Q		1 - Magnetic QR Bit Holder
8092225		1 - Bit Adaptor (25mmL) 1/4" Hex-1/4Sq
8111		1 - Flexible Inhex Extension

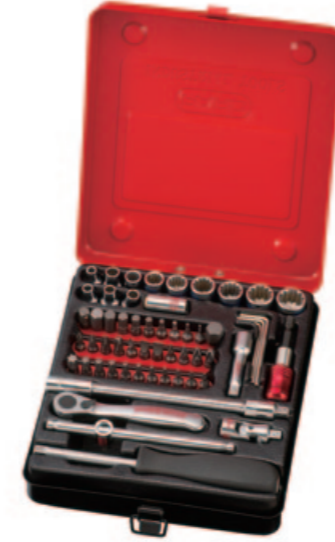


S2561-24 56件 1/4" 六方套筒及旋具套头组套
56 pcs 1/4" Socket & Socket Bit Set

PARD NO.	(g)	Box
S2561-24	1175	12

Contents: 1/4" DR.

PARD NO.	Icon	Description
S525 04 ... 13		12 - 6pt Flank Socket
	Size (mm)	4; 4.5; 5; 5.5; 6; 7; 8; 9; 10; 11; 12; 13
12125 0 ... 4		4 - Phillips Bit (25mm) PH.0; PH.1; PH.2; PH.3
12225 0 ... 3		4 - Pozidriv Bit (25mm) PZ.0; PZ.1; PZ.2; PZ.3
12325 04 ... 065		3 - Slotted Bit (25mm) 4; 5.5; 6.5
12425 015 ... 10		10 - Hex Bit (25mm) 1.5; 2; 2.5; 3; 4; 5; 6; 7; 8; 10
12625 06 ... 40		11 - Star Bit (25mm) T6; T7; T8; T9; T10; T15; T20; T25; T27; T30; T40
764-3		3 - Hex Key 3 In 1 1.5; 2; 2.5mm
802224		1 - 72 Teeth Mini Flexible Bit Ratchet Handle
C8032115		1 - Sliding T Handle
C80521		1 - Universal Joint
C81225		1 - Magnetic Socket Pick-up
C8042 050 ... 100		2 - Extension Bar 2"
8142		1 - Spinner 6"
C81260Q		1 - Magnetic QR Bit Holder
8092225		1 - Bit Adaptor (25mmL) 1/4" Hex-1/4Sq
8111		1 - Flexible Inhex Extension



S2562 56件 1/4" 多用型 十二槽套筒及旋具套头组套
56 pcs 1/4" MIT Socket & Socket Bit Set

PARD NO.	(g)	Box
S2562	1175	12

Contents: 1/4" DR.

PARD NO.	Icon	Description
S524 04 ... 13		12 - 12pt. MIT Socket
	Size (mm)	4; 4.5; 5; 5.5; 6; 7; 8; 9; 10; 11; 12; 13
	Size (inch)	5/32; 3/16; 7/32; 9/32; 5/16; 11/32; 3/8; 7/16; 15/32; 1/2
	Star	E5; E6; E7; E8; E10; E11; E12; E14; E16
12125 0 ... 4		4 - Phillips Bit (25mm) PH.0; PH.1; PH.2; PH.3
12225 0 ... 3		4 - Pozidriv Bit (25mm) PZ.0; PZ.1; PZ.2; PZ.3
12325 04 ... 065		3 - Slotted Bit (25mm) 4; 5.5; 6.5
12425 015 ... 10		10 - Hex Bit (25mm) 1.5; 2; 2.5; 3; 4; 5; 6; 7; 8; 10
12625 06 ... 40		11 - Star Bit (25mm) T6; T7; T8; T9; T10; T15; T20; T25; T27; T30; T40
764-3		3 - Hex Key 3 In 1 1.5; 2; 2.5mm
802221		1 - 72 Teeth Mini Bit Ratchet Handle
C8032115		1 - Sliding T Handle
C80521		1 - Universal Joint
C81225		1 - Magnetic Socket Pick-up
C8042 050 ... 100		1 - Extension Bar 2"
8142		1 - Spinner 6"
C81260Q		1 - Magnetic QR Bit Holder
8092225		1 - Bit Adaptor (25mmL) 1/4" Hex-1/4Sq
8111		1 - Flexible Inhex Extension



S2562-24 56件 1/4" 多用型 十二槽套筒及旋具套头组套
56 pcs 1/4" MIT Socket & Socket Bit Set

PARD NO.	(g)	Box
S2562-24	1175	12

Contents: 1/4" DR.

PARD NO.	Icon	Description
S524 04 ... 13		12 - 12pt. MIT Socket
	Size (mm)	4; 4.5; 5; 5.5; 6; 7; 8; 9; 10; 11; 12; 13
	Size (inch)	5/32; 3/16; 7/32; 9/32; 5/16; 11/32; 3/8; 7/16; 15/32; 1/2
	Star	E5; E6; E7; E8; E10; E11; E12; E14; E16
12125 0 ... 4		4 - Phillips Bit (25mm) PH.0; PH.1; PH.2; PH.3
12225 0 ... 3		4 - Pozidriv Bit (25mm) PZ.0; PZ.1; PZ.2; PZ.3
12325 04 ... 065		3 - Slotted Bit (25mm) 4; 5.5; 6.5
12425 015 ... 10		10 - Hex Bit (25mm) 1.5; 2; 2.5; 3; 4; 5; 6; 7; 8; 10
12625 06 ... 40		11 - Star Bit (25mm) T6; T7; T8; T9; T10; T15; T20; T25; T27; T30; T40
764-3		3 - Hex Key 3 In 1 1.5; 2; 2.5mm
802224		1 - 72 Teeth Mini Flexible Bit Ratchet Handle
C8032115		1 - Sliding T Handle
C80521		1 - Universal Joint
C81225		1 - Magnetic Socket Pick-up
C8042 050 ... 100		1 - Extension Bar 2"
8142		1 - Spinner 6"
C81260Q		1 - Magnetic QR Bit Holder
8092225		1 - Bit Adaptor (25mmL) 1/4" Hex-1/4Sq
8111		1 - Flexible Inhex Extension



C2861 86 件 1/4" 套筒及旋具套头组套
86 pcs 1/4" DR. Socket & Socket Bit Set

PARD NO.	(kg)	
C2861	3.55	6

Contents:

S525 04 ... 13	12 - 1/4" DR. 6pt. Flank Socket
Size (mm)	4; 4.5; 5; 5.5; 6; 7; 8; 9; 10; 11; 12; 13
S52550 05 ... 13	9 - 1/4" DR. 6pt. Flank Socket
Size (mm)	5; 6; 7; 8; 9; 10; 11; 12; 13
S526 04 ... 10	6 - 1/4" DR. Star Socket
	E4; E5; E6; E7; E8; E10
C8042 050 ... 150	3 - Extension Bar
	50 - 2", 100 - 4", 150 - 6"
80229	1 - 1/4" DR. 60 Teeth Ratchet Handle
C80521	1 - 1/4" DR. Universal Joint
C81225	1 - 1/4" DR. Magnet Socket Pick-up
C8032115	1 - 1/4" DR. Sliding T Handle
C8143	1 - 1/4" DR. Spinner
C32132 0 ... 3	4 - 1/4" DR. Phillips Socket Bit
	PH.0; PH.1, PH.2; PH.3
C32232 0...3	4 - 1/4" DR. Pozidriv Socket Bit
	PZ.0; PZ.1; PZ.2; PZ.3
C323320 04 ... 065	3 - 1/4" DR. Slotted Socket Bit
Size (mm)	4; 5.5; 6.5
C32432 03 ... 10	7 - 1/4" DR. Hex Socket Bit
Size (mm)	3; 4; 5; 6; 7; 8; 10
C32532 10 ... 40	7 - 1/4" DR. Five Sided Tamperproof Socket Bit
	TS10; TS15; TS20; TS25; TS27; TS30; TS40
C32632 08 ... 40	8 - 1/4" DR. Star Socket Bit
	T8; T10; T15; T20; T25; T27; T30; T40
C32732 08 ... 40	8 - 1/4" DR. Star Tamperproof Socket Bit
	T-8H; T-10H; T-15H; T-20H; T-25H; T-27H; T-30H; T-40H
765015L ... 10L	10 - Hex Ball Point Long Key
Size (mm)	1.5; 2; 2.5; 3; 4; 5; 6; 7; 8; 10

C2862 86 件 1/4" 套筒及旋具套头组套
86 pcs 1/4" DR. Socket & Socket Bit Set

PARD NO.	(kg)	
C2862	3.55	6

Contents:

S525 04 ... 13	12 - 1/4" DR. 6pt. Flank Socket
Size (mm)	4; 4.5; 5; 5.5; 6; 7; 8; 9; 10; 11; 12; 13
S52550 05 ... 13	9 - 1/4" DR. 6pt. Flank Deep Socket
Size (mm)	5; 6; 7; 8; 9; 10; 11; 12; 13
S526 04 ... 10	6 - 1/4" DR. Star Socket
	E4; E5; E6; E7; E8; E10
C8042 050 ... 100	2 - Extension Bar
	50 - 2", 100 - 4"
8111	1 - 1/4" DR. Flexible Inhex Extension
80229	1 - 1/4" DR. 60 Teeth Ratchet Handle
C80521	1 - 1/4" DR. Universal Joint
C81225	1 - 1/4" DR. Magnetic Socket Pick-up
C8032115	1 - 1/4" DR. Sliding T Handle
C8143	1 - 1/4" DR. Spinner
C32132 0 ... 3	4 - 1/4" DR. Phillips Socket Bit
	PH.0; PH.1, PH.2; PH.3
C32232 0...3	4 - 1/4" DR. Pozidriv Socket Bit
	PZ.0; PZ.1; PZ.2; PZ.3
C323320 04 ... 065	3 - 1/4" DR. Slotted Socket Bit
Size (mm)	4; 5.5; 6.5
C32432 03 ... 10	7 - 1/4" DR. Hex Socket Bit
Size (mm)	3; 4; 5; 6; 7; 8; 10
C32532 10 ... 40	7 - 1/4" DR. Five Sided Tamperproof Socket Bit
	TS10; TS15; TS20; TS25; TS27; TS30; TS40
C32632 08 ... 40	8 - 1/4" DR. Star Socket Bit
	T8; T10; T15; T20; T25; T27; T30; T40
C32732 08 ... 40	8 - 1/4" DR. Star Tamperproof Socket Bit
	T-8H; T-10H; T-15H; T-20H; T-25H; T-27H; T-30H; T-40H
765015L ... 10L	10 - Hex Ball Point Long Key
Size (mm)	1.5; 2; 2.5; 3; 4; 5; 6; 7; 8; 10



121 1/4" 十字旋具头
1/4" Phillips Bit

PARD NO.		(g)	
121250	PH.0	25	4 20/400
121251	PH.1	25	4 20/400
121252	PH.2	25	6 20/400
121253	PH.3	25	6 20/400
121300	PH.0	30	6 20/400
121301	PH.1	30	6 20/400
121302	PH.2	30	6 20/400
121303	PH.3	30	6 20/400
121501	PH.1	50	11 10/200
121502	PH.2	50	11 10/200
121503	PH.3	50	11 10/200



122 1/4" 米字旋具头
1/4" Pozidriv Bit

PARD NO.		(g)	
122250	PZ.0	25	4 20/400
122251	PZ.1	25	4 20/400
122252	PZ.2	25	6 20/400
122253	PZ.3	25	6 20/400
122300	PZ.0	30	6 20/400
122301	PZ.1	30	6 20/400
122302	PZ.2	30	6 20/400
122303	PZ.3	30	6 20/400
122501	PZ.1	50	11 10/200
122502	PZ.2	50	11 10/200
122503	PZ.3	50	11 10/200



123 1/4" 一字旋具头
1/4" Slotted Bit

PARD NO.		(g)	
1232503	0.5x3	25	4 20/400
1232504	0.8x4	25	4 20/400
12325055	1.0x5.5	25	4 20/400
12325065	1.2x6.5	25	4 20/400
1232508	1.2x8	25	4 20/400
1233004	0.8x4	30	6 20/400
12330055	1.0x5.5	30	6 20/400
12330065	1.2x6.5	30	6 20/400
1235004	0.8x4	50	11 10/200
1235005	1.0x5	50	11 10/200
1235006	1.2x6	50	11 10/200



125 1/4" 带孔内五星旋具头
1/4" Five-sided Star Tamperproof Bit

PARD NO.		(g)	
1252508	TS8H	25	4 20/400
1252510	TS10H	25	4 20/400
1252515	TS15H	25	4 20/400
1252520	TS20H	25	4 20/400
1252525	TS25H	25	4 20/400
1252527	TS27H	25	4 20/400
1252530	TS30H	25	4 20/400
1252540	TS40H	25	4 20/400
1252545	TS45H	25	6 20/400
1252550	TS50H	25	8 20/400



124 公制 1/4" 内六角旋具头
1/4" Hex Bit

PARD NO.	Size	Length	Weight (g)	Pack
12425015	1.5	25	4	20/400
1242502	2	25	4	20/400
12425025	2.5	25	4	20/400
1242503	3	25	4	20/400
1242504	4	25	5	20/400
1242505	5	25	5	20/400
12425055	5.5	25	5	20/400
1242506	6	25	5	20/400
1242507	7	25	6	20/400
1242508	8	25	6	20/400
1242510	10	25	8	20/400

124 公制 1/4" 内六角旋具头
1/4" Hex Bit

PARD NO.	Size	Length	Weight (g)	Pack
12430015	1.5	30	6	20/400
1243002	2	30	6	20/400
12430025	2.5	30	6	20/400
1243003	3	30	6	20/400
1243004	4	30	7	20/400
1243005	5	30	8	20/400
12430055	5.5	30	8	20/400
1243006	6	30	8	20/400
1243007	7	30	8	20/400
1243008	8	30	10	20/400
1243010	10	30	12	20/400

126 1/4" 内六角星旋具头
1/4" Star Bit

PARD NO.	Size	Length	Weight (g)	Pack
1262504	T4	25	4	20/400
1262505	T5	25	4	20/400
1262506	T6	25	4	20/400
1262507	T7	25	4	20/400
1262508	T8	25	4	20/400
1262509	T9	25	4	20/400
1262510	T10	25	4	20/400
1262515	T15	25	4	20/400
1262520	T20	25	4	20/400
1262525	T25	25	4	20/400
1262527	T27	25	6	20/400
1262530	T30	25	6	20/400
1262540	T40	25	6	20/400
1263004	T4	30	6	20/400
1263005	T5	30	6	20/400
1263006	T6	30	6	20/400
1263007	T7	30	6	20/400
1263008	T8	30	6	20/400
1263009	T9	30	6	20/400
1263010	T10	30	6	20/400
1263015	T15	30	6	20/400
1263020	T20	30	6	20/400
1263025	T25	30	6	20/400
1263027	T27	30	8	20/400
1263030	T30	30	8	20/400
1263040	T40	30	8	20/400

127 1/4" 带孔内六角星旋具头
1/4" Star Tamperproof Bit

PARD NO.	Size	Length	Weight (g)	Pack
1272506	T-6H	25	4	20/400
1272507	T-7H	25	4	20/400
1272508	T-8H	25	4	20/400
1272509	T-9H	25	4	20/400
1272510	T-10H	25	4	20/400
1272515	T-15H	25	4	20/400
1272520	T-20H	25	4	20/400
1272525	T-25H	25	4	20/400
1272527	T-27H	25	6	20/400
1272530	T-30H	25	6	20/400
1272540	T-40H	25	6	20/400
1273006	T-6H	30	6	20/400
1273007	T-7H	30	6	20/400
1273008	T-8H	30	6	20/400
1273009	T-9H	30	6	20/400
1273010	T-10H	30	6	20/400
1273015	T-15H	30	6	20/400
1273020	T-20H	30	6	20/400
1273025	T-25H	30	6	20/400
1273027	T-27H	30	8	20/400
1273030	T-30H	30	8	20/400
1273040	T-40H	30	8	20/400

124 英制 1/4" 内六角旋具头
1/4" Hex Bit

PARD NO.	Size	Length	Weight (g)	Pack
124251.16	1/16	25	4	20/400
124253.32	3/32	25	4	20/400
124251.8	1/8	25	4	20/400
124255.32	5/32	25	4	20/400
124253.16	3/16	25	5	20/400
124257.32	7/32	25	5	20/400
124251.4	1/4	25	5	20/400
124259.32	9/32	25	5	20/400
124255.16	5/16	25	6	20/400
124253.8	3/8	25	6	20/400

124 英制 1/4" 内六角旋具头
1/4" Hex Bit

PARD NO.	Size	Length	Weight (g)	Pack
124301.16	1/16	30	6	20/400
124303.32	3/32	30	6	20/400
124301.8	1/8	30	6	20/400
124305.32	5/32	30	6	20/400
124303.16	3/16	30	7	20/400
124307.32	7/32	30	8	20/400
124301.4	1/4	30	8	20/400
124309.32	9/32	30	8	20/400
124305.16	5/16	30	8	20/400
124303.8	3/8	30	10	20/400



2103-H 10 件旋具头支架组套(未包含旋具头)
10 pcs Bit Holder (Excluding Bit)

PARD NO.	Weight (g)	Pack
2103-H	36	12/240



130 倒角旋具头
1/4" 3-Flute Countersink Bit

PARD NO.	Size (mm)	Length	Weight (g)	Pack
130316.3	6.3°	31	7	20/400
130318.3	8.3°	31	8	20/400
1303410.4	10.4°	34	9	20/400
1303512.4	12.4°	35	11	20/400
1304016.5	16.5°	40	15	20/400
1304120.5	20.5°	41	22	20/400

套筒/旋具头系列 SOCKET / BIT series



C321 1/4" 十字旋具套头
1/4" Phillips Socket Bit

PARD NO.	Icon	Length (mm)	Weight (g)	Box Qty
C321320	PH.0	32	12	50
C321321	PH.1	32	12	50
C321322	PH.2	32	12	50
C321323	PH.3	32	14	50



C322 1/4" 米字旋具套头
1/4" Pozidriv Socket Bit

PARD NO.	Icon	Length (mm)	Weight (g)	Box Qty
C322320	PZ.0	32	12	50
C322321	PZ.1	32	12	50
C322322	PZ.2	32	12	50
C322323	PZ.3	32	12	50



C323 1/4" 一字旋具套头
1/4" Slotted Socket Bit

PARD NO.	Icon	Length (mm)	Weight (g)	Box Qty
C3233204	0.8x4	32	12	50
C32332055	1.0x5.5	32	12	50
C32332065	1.2x6.5	32	12	50



C324 1/4" 内六角旋具套头
1/4" Hex Socket Bit

PARD NO.	Icon	Length (mm)	Weight (g)	Box Qty
C3243203	3	32	13	50
C3243204	4	32	14	50
C3243205	5	32	14	50
C3243206	6	32	14	50
C3243207	7	32	16	50
C3243208	8	32	17	50
C3243210	10	32	21	50

C324 1/4" 内六角旋具套头
1/4" Hex Socket Bit

PARD NO.	Icon	Length (mm)	Weight (g)	Box Qty
C324321.8	1/8	32	14	50
C324325.32	5/32	32	14	50
C324323.16	3/16	32	14	50
C324327.32	7/32	32	14	50
C324321.4	1/4	32	16	50
C324325.16	5/16	32	16	50
C324323.8	3/8	32	20	50



C325 1/4" 带孔内五星旋具套头
1/4" Five-sided Star Tamperproof Socket Bit

PARD NO.	Icon	Length (mm)	Weight (g)	Box Qty
C3253210	TS10H	32	12	50
C3253215	TS15H	32	12	50
C3253220	TS20H	32	12	50
C3253225	TS25H	32	12	50
C3253227	TS27H	32	12	50
C3253230	TS30H	32	12	50
C3253240	TS40H	32	12	50



C326 1/4" 内六角星旋具套头
1/4" Star Socket Bit

PARD NO.	Icon	Length (mm)	Weight (g)	Box Qty
C3263208	T8	32	13	50
C3263210	T10	32	13	50
C3263215	T15	32	13	50
C3263220	T20	32	14	50
C3263225	T25	32	14	50
C3263227	T27	32	14	50
C3263230	T30	32	14	50
C3263240	T40	32	14	50



C327 1/4" 带孔内六角星旋具套头
1/4" Star Tamperproof Socket Bit

PARD NO.	Icon	Length (mm)	Weight (g)	Box Qty
C3273208	T-8H	32	13	50
C3273210	T-10H	32	13	50
C3273215	T-15H	32	13	50
C3273220	T-20H	32	14	50
C3273225	T-25H	32	14	50
C3273227	T-27H	32	14	50
C3273230	T-30H	32	14	50
C3273240	T-40H	32	14	50



S524 1/4" 多用型十二槽套筒
1/4" DR. 12pt. MIT Socket

PARD NO.	Size (mm)	Size (inch)	Star	Length (mm)	Weight (g)	Box Qty
S524032	3.2	1/8	E4	25	10	50
S52404	4	5/32	E5	25	10	50
S524045	4.5			25	11	50
S52405	5	3/16	E6	25	11	50
S524055	5.5	7/32	E7	25	11	50
S52406	6		E8	25	11	50
S52407	7	9/32		25	12	50
S52408	8	5/16	E10	25	12	50
S52409	9	11/32	E11	25	14	50
S52410	10	3/8	E12	25	15	50
S52411	11	7/16	E14	25	18	50
S52412	12	15/32		25	21	50
S52413	13	1/2	E16	25	22	50
S52414	14	9/16	E18	25	25	50

S52450 1/4" 多用型十二槽加长套筒
1/4" DR. 12pt. MIT Deep Socket

PARD NO.	Icon	Length (mm)	Weight (g)	Box Qty
S5245004	4	50	14	50
S52450045	4.5	50	16	50
S5245005	5	50	17	50
S52450055	5.5	50	18	50
S5245006	6	50	20	50
S5245007	7	50	22	50
S5245008	8	50	27	50
S5245009	9	50	29	50
S5245010	10	50	34	50
S5245011	11	50	40	50
S5245012	12	50	41	50
S5245013	13	50	52	50



S525 公制 1/4" 六方套筒 1/4" DR. 6pt. Flank Socket

PARD NO.				
S52504	4	25	10	50
S525045	4.5	25	11	50
S52505	5	25	11	50
S525055	5.5	25	11	50
S52506	6	25	11	50
S52507	7	25	12	50
S52508	8	25	12	50
S52509	9	25	14	50
S52510	10	25	15	50
S52511	11	25	18	50
S52512	12	25	21	50
S52513	13	25	22	50
S52514	14	25	25	50

S52550 公制 1/4" 六方加长套筒 1/4" DR. 6pt. Flank Deep Socket

PARD NO.				
S5255004	4	50	14	50
S52550045	4.5	50	16	50
S5255005	5	50	17	50
S52550055	5.5	50	18	50
S5255006	6	50	20	50
S5255007	7	50	22	50
S5255008	8	50	27	50
S5255009	9	50	29	50
S5255010	10	50	34	50
S5255011	11	50	40	50
S5255012	12	50	41	50
S5255013	13	50	52	50

S526 1/4" 六星套筒 1/4" DR. Star Socket

PARD NO.				
S52604	E4	25	10	50
S52605	E5	25	10	50
S52606	E6	25	11	50
S52607	E7	25	11	50
S52608	E8	25	12	50
S52610	E10	25	12	50

S529 公制 1/4" 十二星套筒 1/4" DR. 12pt. Flank Socket

PARD NO.				
S52904	4	25	10	50
S529045	4.5	25	11	50
S52905	5	25	11	50
S529055	5.5	25	11	50
S52906	6	25	11	50
S52907	7	25	12	50
S52908	8	25	12	50
S52909	9	25	14	50
S52910	10	25	15	50
S52911	11	25	18	50
S52912	12	25	21	50
S52913	13	25	22	50
S52914	14	25	25	50

S525 英制 1/4" 六方套筒 1/4" DR. 6pt. Flank Socket

PARD NO.				
S5255.32	5/32	25	10	50
S5253.16	3/16	25	11	50
S5257.32	7/32	25	11	50
S5251.4	1/4	25	11	50
S5259.32	9/32	25	12	50
S5255.16	5/16	25	12	50
S52511.32	11/32	25	14	50
S5253.8	3/8	25	15	50
S5257.16	7/16	25	18	50
S5251.2	1/2	25	22	50
S5259.16	9/16	25	25	50

S52550 公制 1/4" 六方加长套筒 1/4" DR. 6pt. Flank Deep Socket

PARD NO.				
S525505.32	5/32	50	14	50
S525503.16	3/16	50	17	50
S525507.32	7/32	50	18	50
S525501.4	1/4	50	20	50
S525509.32	9/32	50	22	50
S525505.16	5/16	50	27	50
S5255011.32	11/32	50	29	50
S525503.8	3/8	50	34	50
S525507.16	7/16	50	40	50
S525501.2	1/2	50	52	50

S529 英制 1/4" 十二星套筒 1/4" DR. 12pt. Flank Socket

PARD NO.				
S5295.32	5/32	25	10	50
S5293.16	3/16	25	11	50
S5297.32	7/32	25	11	50
S5291.4	1/4	25	11	50
S5299.32	9/32	25	12	50
S5295.16	5/16	25	12	50
S52911.32	11/32	25	14	50
S5293.8	3/8	25	15	50
S5297.16	7/16	25	18	50
S5291.2	1/2	25	22	50
S5299.16	9/16	25	25	50



S52950 公制 1/4" 十二星加长套筒
1/4" DR. 12pt. Flank Deep Socket

PARD NO.				
S5295004	4	50	14	50
S52950045	4.5	50	16	50
S5295005	5	50	17	50
S52950055	5.5	50	18	50
S5295006	6	50	20	50
S5295007	7	50	22	50
S5295008	8	50	27	50
S5295009	9	50	29	50
S5295010	10	50	34	50
S5295011	11	50	40	50
S5295012	12	50	41	50
S5295013	13	50	52	50

S52950 公制 1/4" 十二星加长套筒
1/4" DR. 12pt. Flank Deep Socket

PARD NO.				
S529505.32	5/32	50	14	50
S529503.16	3/16	50	17	50
S529507.32	7/32	50	18	50
S529501.4	1/4	50	20	50
S529509.32	9/32	50	22	50
S529505.16	5/16	50	27	50
S5295011.32	11/32	50	29	50
S529503.8	3/8	50	34	50
S529507.16	7/16	50	40	50
S529501.2	1/2	50	52	50



80221 1/4" 系列棘轮扳手 -24 齿
1/4" DR. Ratchet Handle-24 Teeth

PARD NO.			
80221	155	150	10



80224 1/4" 系列棘轮扳手 -20 齿
1/4" DR. Ratchet Handle-20 Teeth

PARD NO.			
80224	130	120	10



80222 1/4" 系列棘轮扳手 -72 齿
1/4" DR. Ratchet Handle-72 Teeth

PARD NO.			
80222	155	114	10



80228 1/4" 系列棘轮头
1/4" DR. Ratchet Head

PARD NO.			
80228	130	120	10



80223 1/4" 系列摇头棘轮扳手 -72 齿
1/4" DR. Flexible Round Ratchet Handle-72 Teeth

PARD NO.			
80223	155	126	10



80229 1/4" 系列棘轮扳手 -60 齿
1/4" DR. Ratchet Handle-60 Teeth

PARD NO.			
80229	120	130	10

RATCHET series

PARD



802213 1/4" 系列棘轮扳手 -36 齿
1/4" DR. Ratchet Handle - 36 Teeth

PARD NO.			
802213	138	120	10



802220 1/4" 袖珍棘轮扳手 -72 齿
1/4" DR. Mini Ratchet Handle-72 Teeth

PARD NO.			
802220	95	54	10



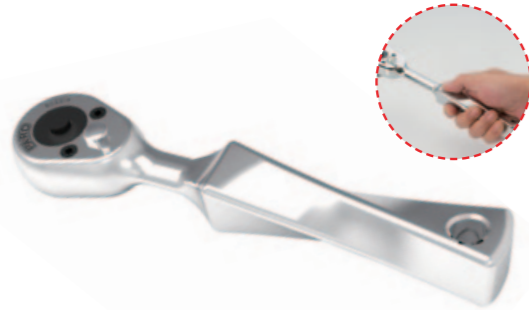
802224 1/4" 袖珍摇头旋具头棘轮扳手 -72 齿
1/4" Mini Flexible Bit Ratchet-72 Teeth

PARD NO.			
802224	95	60	10



C8032 1/4" 滑移头驱动杆
1/4" DR. Sliding T Handle

PARD NO.			
C8032115	115	42	10



802214 1/4" 系列棘旋柄轮扳手 -36 齿
1/4" Twist Ratchet Handle - 36 Teeth

PARD NO.			
802214	125	165	10



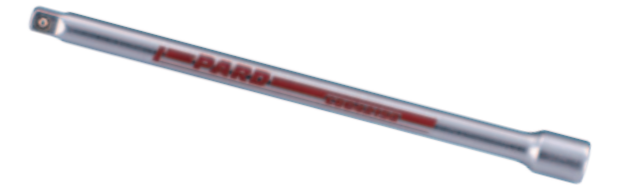
802221 1/4" 袖珍旋具头棘轮扳手 -72 齿
1/4" Mini Bit Ratchet Handle-72 Teeth

PARD NO.			
802221	95	54	10



802225 1/4" 系列棘旋柄轮扳手 -36 齿
1/4" Twist Ratchet Handle - 36 Teeth

PARD NO.			
802225	125	130	10



C8042 1/4" 驱动延长杆
1/4" DR. Extension

PARD NO.			
C8042050	50-2"	23	20
C8042075	75-3"	35	20
C8042100	100-4"	46	10
C8042150	150-6"	66	10
C8042250	250-10"	100	10



802215 1/4" 系列棘旋柄轮扳手 -72 齿
1/4" Twist Ratchet Handle - 72 Teeth

PARD NO.			
802215	125	165	10



802223 1/4" 袖珍摇头棘轮扳手 -72 齿
1/4" Mini Flexible Ratchet Handle-72 Teeth

PARD NO.			
802223	95	60	10



802226 1/4" 系列棘旋柄轮扳手 -72 齿
1/4" Twist Ratchet Handle - 72 Teeth

PARD NO.			
802226	125	130	10



C8042W 1/4" 球头驱动延长杆
1/4" DR. Wobble Extension Bar

PARD NO.			
C8042050W	50-2"	23	20
C8042100W	100-4"	46	10
C8042150W	150-6"	66	10
C8042250W	250-10"	100	10

套筒/旋具头系列 SOCKET / BIT series



C8042LK 1/4" 带锁定装置驱动延长杆
1/4" DR. Lock Extension Bar

PARD NO.	Size	Weight (g)	Quantity
C8042100LK	100-4"	46	10
C8042150LK	150-6"	66	10
C8042250LK	250-10"	100	10
C8042300LK	300-12"	115	10



C8092 1/4" 转换接头
1/4" DR. Adaptor

PARD NO.	Size	Weight (g)	Quantity
C80923	1/4" (F)×3/8" (M)	26	18



8111 1/4" 柔性延长杆
1/4" DR. Flexible Inhex Extension

PARD NO.	Size	Weight (g)	Quantity
8111	1/4" DR.	150	60



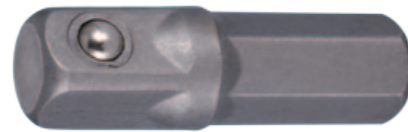
8142 1/4" 驱动柄
1/4" DR. Spinner

PARD NO.	Size	Weight (g)	Quantity
8142	1/4" DR.	150-6"	104



C80521 1/4" 万向接头
1/4" DR. Universal Joint

PARD NO.	Weight (g)	Quantity
C80521	37	23



80922 1/4" 旋具头连接杆
1/4" Bit Adaptor

PARD NO.	Size	Weight (g)	Quantity
8092225	1/4" Hex - 1/4" Sq.	25	8
8092230	1/4" Hex - 1/4" Sq.	30	10
8092250	1/4" Hex - 1/4" Sq.	50	15



C812 1/4" 磁性快换旋具头卡头
1/4" Magnetic QR Bit Holder

PARD NO.	Size	Weight (g)	Quantity
C81260Q	1/4" Hex - 1/4" Inhex	60	16



C8143 1/4" 驱动柄
1/4" DR. Spinner

PARD NO.	Size	Weight (g)	Quantity
C8143	1/4" DR.	150-6"	104



C806 1/4" 变径万向接头
Adaptor for 1/4" DR. Extension

PARD NO.	Size	Weight (g)	Quantity
C80622	1/4" (F)×1/4" (M)	26	15
C80632	3/8" (F)×1/4" (M)	35	29



C8102 1/4" 旋具头卡头
1/4" DR. Bit Holder

PARD NO.	Size	Weight (g)	Quantity
C81022	1/4" (F)×1/4" (F)	25	14



C81225 1/4" 磁性检拾接头
1/4" DR. Magnetic Socket Pick-Up

PARD NO.	Size	Weight (g)	Quantity
C81225	1/4" DR.	25	16



8144 1/4" 磁性驱动柄
1/4" DR. Magnetic Inhex Spinner

PARD NO.	Size	Weight (g)	Quantity
8144	1/4" DR.	215	117



8192BQT 1/4" T型六角旋具手柄
1/4" DR. Magnetic Hex Hole T-Handle

PARD NO.	Size			
8192BQT	6.5	322	318	10



8192QT 1/4" T型四角接头手柄
1/4" DR. Quick-Release T-Handle

PARD NO.	Size			
8192QT	1/4"	322	313	10



C3081 8件 3/8" 内六角旋具套头加支架组套
8 pcs 3/8" DR. Hex Socket Bit Set

PARD NO.		
C3081	254	72

Contents: 3/8" DR.		
C33450 03 ... 12	8 - Hex Socket Bit 3; 4; 5; 6; 7; 8; 10; 12 mm	



C3111 11件 1/4" & 3/8" 内六角旋具套头加支架组套
11 pcs 1/4" & 3/8" Star Socket Bit Set

PARD NO.		
C3111	470	36

Contents: 1/4" DR. & 3/8" DR.	
C32632 08 ... 40	8 - 1/4" DR. Star Socket Bit T8; T10; T15; T20; T25; T27; T30; T40
C33650 45 ... 55	3 - 3/8" DR. Star Socket Bit T45; T50; T55



C3091 9件 1/4" & 3/8" 内五星旋具套头加支架组套
9 pcs 1/4" & 3/8" Five - Sided Star Tamperproof Socket Bit Set

PARD NO.		
C3091	254	72

Contents: 1/4" DR. & 3/8" DR.	
C32532 10 ... 40	7 - 1/4" Five - Sided Star Tamperproof Socket Bit TS10H; TS15H; TS20H; TS25H; TS27H; TS30H; TS40H
C33550 45 ... 50	2 - 3/8" Five - Sided Star Tamperproof Socket Bit TS45H; TS50H



C3112 11件 1/4" & 3/8" 带孔内六角旋具套头加支架组套
11 pcs 1/4" & 3/8" Star Tamperproof Socket Bit Set

PARD NO.		
C3112	320	36

Contents: 1/4" DR. & 3/8" DR.	
C32732 08 ... 40	8 - 1/4" DR. Star Tamperproof Socket Bit T - 8H; T - 10H; T - 15H; T - 20H; T - 25H; T - 27H; T - 30H; T - 40H
C33750 45 ... 55	3 - 3/8" DR. Star Tamperproof Socket Bit T - 45H; T - 50H; T - 55H



C3121 12 件 3/8" 六方套筒加支架组套
12 pcs 3/8" DR. 6pt Flank Socket Set

PARD NO.	(g)	
C3121	320	36

Contents: 3/8" DR.

C535 08 ... 22	12 - 6pt. Flank Socket
	8; 10; 11; 12; 13; 14; 15; 16; 17; 18; 19; 22 mm



C3122 12 件 3/8" 多用型十二槽套筒加支架组套
12 pcs 3/8" DR. MIT Socket Set

PARD NO.	(g)	
C3122	500	36

Contents: 3/8" DR.

C534 08 ... 19	12 - MIT 3/8" DR.
Size (mm)	8; 9; 10; 11; 12; 13; 14; 15; 16; 17; 18; 19
Size (inch)	5/16; 11/32; 3/8; 7/16; 15/32; 1/2; 9/16; 19/32; 5/8; 21/32; 11/16; 3/4
Star	E10; E11; E12; E14; E16; E18; E20; E22; E24



C3221 22 件 3/8" 六方套筒组套
22 pcs 3/8" DR. Socket Set

PARD NO.	(g)	
C3221	2445	10

Contents: 3/8" DR.

C535 06 ... 22	17 - 6pt. Flank Socket
	6; 7; 8; 9; 10; 11; 12; 13; 14; 15; 16; 17; 18; 19; 20; 21; 22
C8043 075 ... 150	2 - Extension 3"; 6"
C80531	1 - Universal Joint
80239	1 - 60 Teeth Ratchet Handle
C8033165	1 - Sliding T Handle



C3251 25 件 3/8" 六方套筒组套
25 pcs 3/8" DR. 6pt Flank Socket Set

PARD NO.	(g)	
C3251	2957	5

Contents: 3/8" DR.

C535 06 ... 22	17 - 6pt. Flank Socket
	6; 7; 8; 9; 10; 11; 12; 13; 14; 15; 16; 17; 18; 19; 20; 21; 22 mm
C80430 75 ... 225	3 - Extension Bar 3"; 6"; 9"
80232	1 - Ratchet Handle
C80531	1 - Universal Joint
C8073 16 ... 20.8	2 - Spark Plug Socket 16; 20.8 mm
C80643	1 - Adaptor for Extension 1/2" (F) x 3/8" (M)



C3251

PARD NO.	
80232	1 - 72 Teeth Ratchet Handle



C3251-1

PARD NO.	
80231	1 - 24 Teeth Ratchet Handle



C3251-3

PARD NO.	
80233	1 - 72 Teeth Flexible Round Ratchet Handle



C3251-4

PARD NO.	
80234	1 - 30 Teeth Ratchet Handle



C3251-9

PARD NO.	
80239	1 - 60 Teeth Ratchet Handle



C3261 26 件 3/8" 六方套筒组套
26 pcs 3/8" DR. Socket Set

PARD NO.	(g)	Box
C3261	2500	5

Contents: 3/8" DR.

C535 06 ... 22	17 - 6pt. Flank Socket	6; 7; 8; 9; 10; 11; 12; 13; 14; 15; 16; 17; 18; 19; 20; 21; 22
C8043 075 ... 150	2 - Extension 3"; 6"	
C80531	1 - Universal Joint	
80238	1 - Ratchet Head	
P80238	1 - Head	
C8073 16 ... 20.8	2 - Spark Plug Socket	16; 20.8 mm
C8033165	1 - Sliding T Handle	
8043250P	1 - 3/8" Speed Extension	10"

C3421 42 件 3/8" 六方套筒组套
42 pcs 3/8" DR. Socket Set

PARD NO.	(g)	Box
C3421	4465	4

Contents:

C535 06 ... 22	17 - 3/8" DR. 6pt. Flank Socket	Size (mm) 6; 7; 8; 9; 10; 11; 12; 13; 14; 15; 16; 17; 18; 19; 20; 21; 22
C53563 08 ... 19	11 - 3/8" DR. 6pt. Flank Deep Socket	Size (mm) 8; 10; 11; 12; 13; 14; 15; 16; 17; 18; 19
C535 08 ... 16	6 - 3/8" DR. Star Socket	E8; E10; E11; E12; E14; E16
C8043075 ... 250	3 - 3/8" DR. Extension Bar	75 - 3"; 150 - 6"; 250 - 10"
80239	1 - 3/8" DR. 60 Teeth Ratchet Handle	
C80531	1 - 3/8" DR. Universal Joint	
C80643	1 - 3/8" DR. Adaptor for 3/8" Extension	1/2" (F) x 3/8" (M)
C8073 16 ... 20.8	2 - 3/8" DR. Spark Plug Socket	Size (mm) 16; 20.8

C3422 42 件 3/8" 六方套筒组套
42 pcs 3/8" DR. Socket Set

PARD NO.	(g)	Box
C3422	4465	4

Contents:

C535 06 ... 22	17 - 3/8" DR. 6pt. Flank Socket	Size (mm) 6; 7; 8; 9; 10; 11; 12; 13; 14; 15; 16; 17; 18; 19; 20; 21; 22
C53563 08 ... 19	11 - 3/8" DR. 6pt. Flank Deep Socket	Size (mm) 8; 10; 11; 12; 13; 14; 15; 16; 17; 18; 19
C536 08 ... 16	6 - 3/8" DR. Star Socket	E8; E10; E11; E12; E14; E16
C8043075 ... 250	3 - 3/8" DR. Extension Bar	75 - 3"; 150 - 6"; 250 - 10"
80239	1 - 3/8" DR. 60 Teeth Ratchet Handle	
C80531	1 - 3/8" DR. Universal Joint	
C8073 16 ... 20.8	2 - 3/8" DR. Spark Plug Socket	Size (mm) 16; 20.8
C8013200	1 - 3/8" DR. Swivel Handle	

C3591 59 件 1/4" & 3/8" 六方套筒组套
59 pcs 1/4" & 3/8" Socket & Bit Set

PARD NO.	(g)	Box
C3591	3680	4

Contents: 3/8" & 1/4" DR.

S525 04 ... 13	12 - 1/4" 6pt. Flank Socket	Size (mm) 4; 4.5; 5; 5.5; 6; 7; 8; 9; 10; 11; 12; 13
C535 06 ... 22	17 - 3/8" 6pt. Flank Socket	Size (mm) 6; 7; 8; 9; 10; 11; 12; 13; 14; 15; 16; 17; 18; 19; 20; 21; 22
32132 1 ... 3	3 - Phillips Socket Bit	PH.1; PH.2; PH.3
32232 1 ... 3	3 - Pozidriv Socket Bit	PZ.1; PZ.2; PZ.3
32332 04 ... 065	3 - Slotted Socket Bit	4; 5.5; 6.5
32432 03 ... 08	5 - Hex Socket Bit	3; 4; 5; 6; 8 mm
764-3	3 - Hex Key 3 In 1	1.5; 2; 2.5mm
80229	1 - 1/4" Dr. 60 Teeth Ratchet Handle	
80239	1 - 3/8" Dr. 60 Teeth Ratchet Handle	
C80521	1 - 1/4" Dr. Universal Joint	
C80531	1 - 3/8" Dr. Universal Joint	
C8042 050 ... 100	2 - 1/4" Dr. Extension Bar	2"; 4"
C8043 075 ... 150	2 - 3/8" Dr. Extension Bar	3"; 6"
8111	1 - 1/4" Dr. Flexible Inhex Extension	
C8032115	1 - 1/4" Dr. Sliding T Handle	
C8033165	1 - 3/8" Dr. Sliding T Handle	
C81225	1 - 1/4" Dr. Magnetic Socket Pick-Up	
8142	1 - Spinner	6"



C3761 76件 1/4\"/>

PARD NO.	(g)	
C3761	3560	4
Contents:		
S524 032...13	14 - 1/4" DR. MIT Socket	
	Size (mm)	3.2; 4; 4.5; 5; 5.5; 6; 7; 8; 9; 10; 11; 12; 13; 14
	Size (inch)	1/8; 5/32; 3/16; 7/32; 9/32; 5/16; 11/32; 3/8; 7/16; 15/32; 1/2; 9/16
	Star	E4; E5; E6; E7; E8; E10; E11; E12; E14; E16; E18
C8042050...100	2 - 1/4" DR. Extension Bar 50 - 2"; 100 - 4"	
80229	1 - 1/4" DR. 60 Teeth Ratchet Handle	
C80521	1 - 1/4" DR. Universal Joint	
C81225	1 - 1/4" DR. Magnetic Socket Pick-up	
C8032115	1 - 1/4" DR. Sliding T Handle	
C8143	1 - 1/4" DR. Spinner	
C81022	1 - 1/4" DR. Bit Holder 1/4" (F) x 1/4" (F)	
C321320 ... 3	4 - 1/4" DR. Phillips Socket Bit PH.0; PH.1; PH.2; PH.3	
C322320 ... 3	4 - 1/4" DR. Pozidriv Socket Bit PZ.0; PZ.1; PZ.2; PZ.3	
C3233204 ...065	3 - 1/4" DR. Slotted Socket Bit	
	Size (mm)	4; 5.5; 6.5
C3243203 ...10	7 - 1/4" DR. Hex Socket Bit	
	Size (mm)	3; 4; 5; 6; 7; 8; 10
C324321.8 ...3.8	7 - 1/4" DR. Hex Socket Bit	
	Size (inch)	1/8; 5/32; 3/16; 7/32; 1/4; 5/16; 3/8
C3263208 ...40	8 - 1/4" DR. Star Socket Bit T8; T10; T15; T20; T25; T27; T30; T40	

C3761 76件 1/4\"/>

PARD NO.	(g)	
C3761	3560	4
Contents:		
C534 10 ... 22	13 - 3/8" DR. MIT Socket	
	Size (mm)	10; 11; 12; 13; 14; 15; 16; 17; 18; 19; 20; 21; 22
	Size (inch)	3/8; 7/16; 15/32; 1/2; 9/16; 19/32; 5/8; 21/32; 11/16; 3/4; 25/32; 13/16; 7/8
	Star	E12; E14; E16; E18; E20; E22; E24; E26; E28
C8043075...250	3 - 3/8" DR. Extension Bar 75 - 3"; 150 - 6"; 250 - 10"	
C80531	1 - 3/8" DR. Universal Joint	
C807316...20.8	2 - 3/8" DR. Spark Plug Socket	
	Size (mm)	16; 20.8
C80643	1 - Adaptor for 3/8" DR. Extension 1/2" (F) x 3/8" (M)	
80239	1 - 3/8" DR. 60 Teeth Ratchet Handle	



C3601

PARD NO.	
80232	1 - 72 Teeth Ratchet Handle



C3601-1

PARD NO.	
80231	1 - 24 Teeth Ratchet Handle



C3601-3

PARD NO.	
80233	1 - 72 Teeth Flexible Round Ratchet Handle

C3601 60件 1/4\"/>

PARD NO.	(g)	
C3601	3200	5

PARD NO.	(g)	
Contents: 3/8" & 1/4" DR.		
S525 04 ... 10	9 - 1/4" 6pt. Flank Socket	
	Size (mm)	4; 4.5; 5; 5.5; 6; 7; 8; 9; 10
C535 10 ... 22	13 - 3/8" 6pt. Flank Socket	
	Size (mm)	10; 11; 12; 13; 14; 15; 16; 17; 18; 19; 20; 21; 22
12130 1 ... 3	3 - Phillips Bit (30mmL) PH.1; PH.2; PH.3	
12230 1 ... 3	3 - Pozidriv Bit (30mmL) PZ.1; PZ.2; PZ.3	
12330 04 ... 065	3 - Slotted Bit (30mmL) 0.8x4; 1.0x5.5; 1.2x6.5	
12430 03 ... 08	6 - Hex Bit (30mmL) 3; 4; 5; 6; 7; 8 mm	
12630 8 ... 40	8 - Star Bit (30mmL) T8; T10; T15; T20; T25; T27; T30; T40	
80232	1 - 72Teeth Round Ratchet Handle	
C80531	1 - Universal Joint	
C8043 075 ... 250	3 - Extension Bar 3"; 6"; 10"	
C81022	1 - Bit Holder 1/4" (F) x 1/4" (F)	
C81032	1 - Bit Holder 3/8" (F) x 1/4" (F)	
C80932	1 - Adaptor 3/8" (F) x 1/4" (M)	
C8073 16 ... 20.8	2 - Spark Plug Socket 16; 20.8 mm	
C8143	1 - Spinner 6"	
80643	1 - Adaptor for extension 1/2" (F) x 3/8" (M)	
764 015 ... 025	3 - Hex Key 1.5; 2; 2.5 mm	



C3601-4

PARD NO.	
80234	1 - 30 Teeth Ratchet Handle



C3601-9

PARD NO.	
80239	1 - 60 Teeth Ratchet Handle



C3611 61 件 3/8" 六方套筒及旋具头组套
61 pcs 3/8" Socket & Bit Set

PARD NO.	(g)	
C3611	3200	5
Contents: 3/8" DR.		
C535 06 ... 22	17 - 3/8" 6pt. Flank Socket	
	Size (mm)	6; 7; 8; 9; 10; 11; 12; 13; 14; 15; 16; 17; 18; 19; 20; 21; 22
C53563 08 ... 19	9 - 3/8" 6pt. Flank Deep Docket	
	Size (mm)	8; 10; 11; 12; 13; 14; 15; 17; 19
12130 1 ... 3	3 - Phillips Bit (30mmL) PH.1; PH.2; PH.3	
12230 1 ... 3	3 - Pozidriv Bit (30mmL) PZ.1; PZ.2; PZ.3	
12330 04 ... 065	3 - Slotted Bit (30mmL)	
	0.8x4; 1.0x5.5; 1.2x6.5	
12430 03 ... 08	6 - Hex Bit (30mmL)	
	Size (mm)	3; 4; 5; 6; 7; 8
12630 8 ... 40	8 - Star Bit (30mmL)	
	T8; T10; T15; T20; T25; T27; T30; T40	
80232		1 - 72Teeth Round Ratchet Handle
C80531		1 - Universal Joint
C8043 075 ... 250		3 - Extension Bar 3"; 6"; 10"
C81032		1 - Bit Holder 3/8" (F)x1/4" (F)
C8073 16 ... 20.8		2 - Spark Plug Socket 16; 20.8 mm
80643		1 - Adaptor for extension 1/2" (F)x3/8" (M)
764 015 ... 025		3 - Hex Key 1.5; 2; 2.5 mm



C3611

PARD NO.	
80232	1 - 72 Teeth Ratchet Handle



C3611-1

PARD NO.	
80231	1 - 24 Teeth Ratchet Handle



C3611-3

PARD NO.	
80233	1 - 72 Teeth Flexible Round Ratchet Handle



C3611-4

PARD NO.	
80234	1 - 30 Teeth Ratchet Handle



C3611-9

PARD NO.	
80239	1 - 60 Teeth Ratchet Handle



C3651 65 件 1/4" & 3/8" 多用型套筒及旋具头组套
65 pcs 1/4" & 3/8" MIT Socket Set

PARD NO.	(g)	
C3651	1636	10
Contents: 1/4" DR. & 3/8" DR.		
S524 032 ... 10	10 - 1/4" 12pt. MIT Socket	
	Size (mm)	3.2; 4; 4.5; 5; 5.5; 6; 7; 8; 9; 10
	Size (inch)	1/8; 5/32; 3/16; 7/32; 9/32; 5/16; 11/32; 3/8
	Star	E4; E5; E6; E7; E8; E10; E12
C534 06 ... 22	13 - 3/8" 12pt. MIT Socket	
	Size (mm)	10; 11; 12; 13; 14; 15; 16; 17; 18; 19; 20; 21; 22
	Size (inch)	3/8; 7/16; 15/32; 1/2; 9/16; 19/32; 5/8; 21/32; 11/16; 3/4; 25/32; 13/16; 7/8
	Star	E12; E14; E16; E18; E20; E22; E24; E26; E28
12130 1 ... 3	3 - 1/4" Phillips Bit (30mmL) PH.1; PH.2; PH.3	
12230 1 ... 3	3 - 1/4" Pozidriv Bit (30mmL) PZ.1; PZ.2; PZ.3	
12330 04 ... 065	3 - 1/4" Slotted Bit (30mmL)	
	0.8x4; 1.0x5.5; 1.2x6.5	
12430 3 ... 8	6 - Hex Bit (30mmL) 3; 4; 5; 6; 7; 8 mm	
124 1.8 ... 1.4	4 - Hex Bit (30mmL) 1/8; 3/16; 7/32; 1/4	
12630 8 ... 40	8 - 1/4" Star Bit (30mmL)	
	T8; T10; T15; T20; T25; T27; T30; T40	
80232		1 - 72Teeth Round Ratchet Handle
C80531		1 - Universal Joint
C8043 075 ... 250		3 - Extension Bar 3"; 6"; 10"
C81032		1 - Bit Holder 3/8" (F)x1/4" (F)
C80932		1 - Adaptor 3/8" (F)x1/4" (M)
C8073 16 ... 20.8		2 - Spark Plug Socket 16; 20.8 mm
C8143		1 - Spinner 6"
C80643		1 - Adaptor for extension 1/2" (F)x3/8" (M)
764 015 ... 025		3 - Hex Key 1.5; 2; 2.5 mm
C81022		1 - Bit Holder 1/4" (F)x1/4" (F)



C3651

PARD NO.	
80232	1 - 72 Teeth Ratchet Handle



C3651-1

PARD NO.	
80231	1 - 24 Teeth Ratchet Handle



C3651-3

PARD NO.	
80233	1 - 72 Teeth Flexible Round Ratchet Handle



C3651-4

PARD NO.	
80234	1 - 30 Teeth Ratchet Handle



C3651-9

PARD NO.	
80239	1 - 60 Teeth Ratchet Handle



151 5/16" 十字旋具头
5/16" Phillips Bit

PARD NO.				
151301	PH.1	30	10	10
151302	PH.2	30	10	10
151303	PH.3	30	10	10
151304	PH.4	30	11	10

154 5/16" 内六角旋具头
5/16" Hex Bit

PARD NO.				
1543003	3	30	8	10
1543004	4	30	9	10
1543005	5	30	10	10
1543006	6	30	11	10
1543007	7	30	12	10
1543008	8	30	12	10
1543010	10	30	16	10
1543012	12	30	21	10
1543014	14	30	25	10
			10	
1547005	5	70	26	10
1547006	6	70	27	
1547007	7	70	28	10
1547008	8	70	29	10
1547010	10	70	40	10
1547012	12	70	50	10
1547014	14	70	70	10
			10	
15412005	5	120	47	10
15412006	6	120	48	10
15412007	7	120	49	10
15412008	8	120	50	10
15418005	5	180	72	10
15418006	6	180	73	10
15418007	7	180	74	10
15418008	8	180	75	10

156 5/16" 内六角星旋具头
5/16" Star Bit

PARD NO.				
1563010	T10	30	9	10
1563015	T15	30	9	10
1563020	T20	30	9	10
1563025	T25	30	9	10
1563027	T27	30	9	10
1563030	T30	30	10	10
1563040	T40	30	10	10
1563045	T45	30	11	10
1563047	T47	30	12	10
1563050	T50	30	12	10
1563055	T55	30	14	10
1563060	T60	30	24	10
1567010	T10	70	25	10
1567015	T15	70	25	10
1567020	T20	70	25	10
1567025	T25	70	25	10
1567027	T27	70	26	10
1567030	T30	70	26	10
1567040	T40	70	27	10
1567045	T45	70	28	10
1567050	T50	70	28	10
1567055	T55	70	28	10
			10	
15612040	T40	120	47	10
15612045	T45	120	48	10
15612050	T50	120	49	10
			10	
15618040	T40	180	73	10
15618045	T45	180	74	10
15618050	T50	180	74	10

157 5/16" 带孔内六角星旋具头
5/16" Star Tamperproof Bit

PARD NO.				
1573010	T-10H	30	10	10
1573015	T-15H	30	10	10
1573020	T-20H	30	10	10
1573025	T-25H	30	10	10
1573027	T-27H	30	10	10
1573030	T-30H	30	10	10
1573040	T-40H	30	10	10
1573045	T-45H	30	10	10
1573050	T-50H	30	12	10
1573055	T-55H	30	14	10
1573060	T-60H	30	24	10
1577010	T-10H	70	30	10
1577015	T-15H	70	30	10
1577020	T-20H	70	30	10
1577025	T-25H	70	30	10
1577027	T-27H	70	30	10
1577030	T-30H	70	30	10
1577040	T-40H	70	30	10
1577045	T-45H	70	30	10
1577050	T-50H	70	30	10



152 5/16" 米字旋具头
5/16" Pozidriv Bit

PARD NO.				
152301	PZ.1	30	10	10
152302	PZ.2	30	10	10
152303	PZ.3	30	10	10
152304	PZ.4	30	10	10



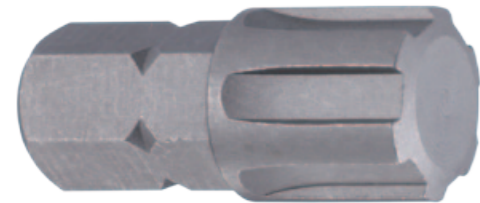
153 5/16" 一字旋具头
5/16" Slotted Bit

PARD NO.				
15330055	0.8x5.5	30	9	10
1533007	1.2x7	30	10	10
1533008	1.2x8	30	12	10
1533010	1.6x10	30	14	10
1533012	2.0x12	30	14	10



158 5/16" 内六星旋具头
5/16" Spline Bit

PARD NO.	Icon	Length (mm)	Weight (g)	Box Qty
1583005	M5	30	9	10
1583006	M6	30	10	10
1583008	M8	30	11	10
1587005	M5	70	26	10
1587006	M6	70	26	10
1587008	M8	70	27	10
15812005	M5	120	46	10
15812006	M6	120	47	10
15812008	M8	120	48	10
15818008	M8	180	73	10



159 5/16" 内六槽旋具头
5/16" Ribe Bit

PARD NO.	Icon	Length (mm)	Weight (g)	Box Qty
1593004	M4	30	8	10
1593005	M5	30	9	10
1593006	M6	30	10	10
1593007	M7	30	10	10
1593008	M8	30	11	10
1597005	M5	70	26	10
1597006	M6	70	26	10
1597007	M7	70	27	10
1597008	M8	70	28	10
15912008	M8	120	48	10
15918008	M8	180	73	10



C331 3/8" 十字旋具套头
3/8" Phillips Socket Bit

PARD NO.	Icon	Length (mm)	Weight (g)	Box Qty
C331501	PH.1	50	42	20
C331502	PH.2	50	42	20
C331503	PH.3	50	42	20
C331504	PH.4	50	46	20



C332 3/8" 米字旋具套头
3/8" Pozidriv Socket Bit

PARD NO.	Icon	Length (mm)	Weight (g)	Box Qty
C332501	PZ.1	50	50	20
C332502	PZ.2	50	50	20
C332503	PZ.3	50	52	20
C332504	PZ.4	50	52	20



C333 3/8" 一字旋具套头
3/8" Slotted Socket Bit

PARD NO.	Icon	Length (mm)	Weight (g)	Box Qty
C3335004	0.8x4	50	50	20
C33350055	0.8x5.5	50	50	20
C33350065	1.2x6.5	50	50	20
C3335008	1.2x8	50	50	20



C334 公制 3/8" 内六角旋具套头
3/8" Hex Socket Bit

PARD NO.	Icon	Length (mm)	Weight (g)	Box Qty
C3345003	3	50	42	20
C3345004	4	50	42	20
C3345005	5	50	43	20
C33450055	5.5	50	43	20
C3345006	6	50	43	20
C3345007	7	50	47	20
C3345008	8	50	47	20
C3345009	9	50	52	20
C3345010	10	50	66	20
C3345012	12	50	45	20

C334 公制 3/8" 内六角旋具套头
3/8" Hex Socket Bit

PARD NO.	Icon	Length (mm)	Weight (g)	Box Qty
C334501.8	1/8	50	42	20
C334505.32	5/32	50	57	20
C334503.16	3/16	50	66	20
C334507.32	7/32	50	43	20
C334501.4	1/4	50	57	20
C334505.16	5/16	50	47	20
C334503.8	3/8	50	42	20
C334507.16	7/16	50	62	20
C334501.2	1/2	50	43	20



C335 3/8" 带孔内五星旋具套头
3/8" Five-Sided Star Tamperproof Socket Bit

PARD NO.	Icon	Length (mm)	Weight (g)	Box Qty
C3355045	TS45H	50	52	20
C3355050	TS50H	50	52	20



C336 公制 3/8" 内六角旋具套头
3/8" Star Socket Bit

PARD NO.	Icon	Length (mm)	Weight (g)	Box Qty
C3365008	T-8	50	50	20
C3365010	T-10	50	50	20
C3365015	T-15	50	50	20
C3365020	T-20	50	50	20
C3365025	T-25	50	50	20
C3365027	T-27	50	50	20
C3365030	T-30	50	50	20
C3365040	T-40	50	50	20
C3365045	T-45	50	52	20
C3365050	T-50	50	52	20
C3365055	T-55	50	52	20
C3365060	T-60	50	72	20



C337 3/8" 带孔内六角旋具套头
3/8" Star Tamperproof Socket Bit

PARD NO.	Icon	Length (mm)	Weight (g)	Box Qty
C3375008	T-8H	50	42	20
C3375010	T-10H	50	42	20
C3375015	T-15H	50	42	20
C3375020	T-20H	50	42	20
C3375025	T-25H	50	42	20
C3375027	T-27H	50	42	20
C3375030	T-30H	50	42	20
C3375040	T-40H	50	42	20
C3375045	T-45H	50	42	20
C3375050	T-50H	50	47	20
C3375055	T-55H	50	55	20
C3375060	T-60H	50	60	20



C338 3/8" 内十二星旋具套头
3/8" Spline Socket Bit

PARD NO.				
C3385005	M5	50	50	20
C3385006	M6	50	50	20
C3385008	M8	50	52	20
C3385009	M9	50	54	20
C3385010	M10	50	54	20
C3385012	M12	50	56	20



C339 3/8" 内六槽旋具套头
3/8" Ribe Socket Bit

PARD NO.				
C3395007	M7	50	50	20
C3395010	M10	50	55	20
C3399005	M5	90	58	10
C3399006	M6	90	60	10
C3399007	M7	90	63	10
C3399008	M8	90	64	10
C3399009	M9	90	81	10
C3399010	M10	90	83	10



331N 3/8" 绝缘十字旋具套头
△1000V Insulated
3/8" DR. Phillips Socket Bit

PARD NO.				
33101N	PH.1	68	45	20
33102N	PH.2	68	46	20
33103N	PH.3	68	47	20



333N 3/8" 绝缘一字旋具套头
△1000V Insulated
3/8" Slotted Socket Bit

PARD NO.				
33305N	5mm	68	47	20
33306N	6mm	68	48	20
33308N	8mm	68	49	20



334N 3/8" 绝缘内六角旋具套头
△1000V Insulated
3/8" Hex Socket Bit

PARD NO.				
33404N	4	68	47	20
33405N	5	68	48	20
33406N	6	68	49	20
33408N	8	68	51	20
3345.32N	5/32	68	47	20
3343.16N	3/16	68	48	20
3347.32N	7/32	68	49	20
3341.4N	1/4	68	49	20
3345.16N	5/16	68	51	20



C534 3/8" 多用型内十二槽套筒
3/8" DR. 12pt. MIT Socket

PARD NO.	Size (mm)	Size (inch)	Star			
C53406	6	-	E8	28	22	50
C53407	7	9/32	-	28	23	50
C53408	8	5/16	E10	28	24	50
C53409	9	11/32	E11	28	24	50
C53410	10	3/8	E12	28	24	50
C53411	11	7/16	E14	28	25	50
C53412	12	15/32	-	28	25	50
C53413	13	1/2	E16	28	28	50
C53414	14	9/16	E18	30	36	50
C53415	15	19/32	-	30	44	50
C53416	16	5/8	E20	30	44	50
C53417	17	21/32	-	30	47	50
C53418	18	11/16	E22	30	47	50
C53419	19	3/4	E24	30	55	50
C53420	20	25/32	-	30	66	50
C53421	21	13/16	E26	30	66	50
C53422	22	7/8	E28	32	74	50

套筒/旋具头系列 SOCKET / BIT series



C535 公制 3/8" 六方套筒
3/8" DR. 6pt. Flank Socket

PARD NO.				
C53506	6	28	22	20
C53507	7	28	23	20
C53508	8	28	24	20
C53509	9	28	24	20
C53510	10	28	24	20
C53511	11	28	25	20
C53512	12	28	25	20
C53513	13	28	28	20
C53514	14	30	36	20
C53515	15	30	44	20
C53516	16	30	44	20
C53517	17	30	47	20
C53518	18	30	47	20
C53519	19	30	55	20
C53520	20	30	66	20
C53521	21	30	66	20
C53522	22	32	74	20
C53524	24	32	77	20

C535 英制 3/8" 六槽套筒
3/8" DR. 6pt. Flank Socket

PARD NO.				
C5351.4	1/4	28	22	20
C5355.16	5/16	28	24	20
C5353.8	3/8	28	24	20
C5357.16	7/16	28	25	20
C5351.2	1/2	28	28	20
C5359.16	9/16	30	36	20
C53519.32	19/32	30	44	20
C5355.8	5/8	30	44	20
C53511.16	11/16	30	47	20
C5353.4	3/4	30	55	20
C53525.32	25/32	30	66	20
C53513.16	13/16	30	66	20
C5357.8	7/8	32	74	20



C536 公制 3/8" 六星套筒
3/8" DR. Star Socket

PARD NO.				
C53604	E4	28	18	20
C53605	E5	28	18	20
C53606	E6	28	18	20
C53607	E7	28	18	20
C53608	E8	28	18	20
C53610	E10	28	20	20
C53611	E11	28	25	20
C53612	E12	28	24	20
C53614	E14	28	22	20
C53616	E16	28	27	20
C53618	E18	28	25	20
C53620	E20	28	52	20



539N 3/8" 绝缘十二星套筒
3/8" DR. Insulated Socket

PARD NO.				
53906N	6	43	29	20
53907N	7	43	30	20
53908N	8	43	30	20
53909N	9	43	30	20
53910N	10	43	30	20
53911N	11	43	30	20
53912N	12	44	31	20
53913N	13	44	31	20
53914N	14	44	39	20
53915N	15	44	48	20
53916N	16	46	48	20
53917N	17	46	53	20
53918N	18	46	59	20
53919N	19	46	59	20



C539 公制 3/8" 十二星套筒
3/8" DR. 12pt. Flank Socket

PARD NO.				
C53906	6	28	22	20
C53907	7	28	23	20
C53908	8	28	24	20
C53909	9	28	24	20
C53910	10	28	24	20
C53911	11	28	25	20
C53912	12	28	25	20
C53913	13	28	28	20
C53914	14	30	36	20
C53915	15	30	44	20
C53916	16	30	44	20
C53917	17	30	47	20
C53918	18	30	47	20
C53919	19	30	55	20
C53920	20	30	66	20
C53921	21	30	66	20
C53922	22	32	74	20
C53924	24	32	77	20

C539 英制 3/8" 十二星套筒
3/8" DR. 12pt. Flank Socket

PARD NO.				
C5395.16	5/16	28	24	20
C5393.8	3/8	28	24	20
C5397.16	7/16	28	25	20
C5391.2	1/2	28	28	20
C5399.16	9/16	30	36	20
C53919.32	19/32	30	44	20
C5395.8	5/8	30	44	20
C53911.16	11/16	30	47	20
C5393.4	3/4	30	55	20
C53913.16	13/16	30	66	20
C5397.8	7/8	32	74	20
C53915.16	15/16	32	77	20



C53563 公制 3/8" 六方加长套筒
3/8" DR.6pt. Flank Deep Socket

PARD NO.				
C5356306	6	63	40	20
C5356307	7	63	40	20
C5356308	8	63	40	20
C5356309	9	63	46	20
C5356310	10	63	47	20
C5356311	11	63	51	20
C5356312	12	63	52	20
C5356313	13	63	59	20
C5356314	14	63	74	20
C5356315	15	63	83	20
C5356316	16	63	91	20
C5356317	17	63	104	10
C5356318	18	63	114	10
C5356319	19	63	123	10
C5356320	20	63	149	10
C5356321	21	63	154	10
C5356322	22	63	166	10

C53563 英制 3/8" 六方加长套筒
3/8" DR.6pt. Flank Deep Socket

PARD NO.				
C535635.16	5/16	63	46	20
C535633.8	3/8	63	49	20
C535637.16	7/16	63	50	20
C535631.2	1/2	63	52	20
C535639.16	9/16	63	71	20
C535635.8	5/8	63	88	10
C5356311.16	11/16	63	106	10
C535633.4	3/4	63	123	10



C53663 3/8" 六星加长套筒
3/8" DR. Star Deep Socket

PARD NO.				
C5365504	E4	55	26	20
C5365505	E5	55	29	20
C5365506	E6	55	30	20
C5365507	E7	55	34	20
C5366308	E8	63	40	20
C5366310	E10	63	45	20
C5366311	E11	63	53	20
C5366312	E12	63	57	20
C5366314	E14	63	66	20
C5366316	E16	63	78	20
C5366318	E18	63	97	20
C5366320	E20	63	103	20



C53963 公制 3/8" 十二星加长套筒
3/8" DR.12pt. Flank Deep Socket

PARD NO.				
C5396306	6	63	40	20
C5396307	7	63	40	20
C5396308	8	63	40	20
C5396309	9	63	46	20
C5396310	10	63	47	20
C5396311	11	63	51	20
C5396312	12	63	52	20
C5396313	13	63	59	20
C5396314	14	63	74	20
C5396315	15	63	83	20
C5396316	16	63	91	20
C5396317	17	63	104	10
C5396318	18	63	114	10
C5396319	19	63	123	10
C5396320	20	63	149	10
C5396321	21	63	154	10
C5396322	22	63	166	10

C53963 英制 3/8" 十二星加长套筒
3/8" DR.12pt. Flank Deep Socket

PARD NO.				
C539635.16	5/16	63	46	20
C539633.8	3/8	63	49	20
C539637.16	7/16	63	50	20
C539631.2	1/2	63	52	20
C539639.16	9/16	63	71	20
C539635.8	5/8	63	88	10
C5396311.16	11/16	63	106	10
C539633.4	3/4	63	123	10
C539637.8	7/8	63	164	10



C8013 3/8" 活节手柄
3/8" DR. Swivel Handle

PARD NO.			
C8013200	200-8"	300	10



80231 3/8" 系列棘轮扳手 -24 齿
3/8" DR. Ratchet Handle-24 Teeth

PARD NO.			
80231	215	364	5



80232 3/8" 系列棘轮扳手 -72 齿
3/8" DR. Round Ratchet Handle -72 Teeth

PARD NO.			
80232	210	300	5



80233 3/8" 系列摇头棘轮扳手 -72 齿
3/8" DR. Flexible Round Ratchet Handle-72 Teeth

PARD NO.			
80233	225	404	5



80234 3/8" 系列棘轮扳手 -30 齿
3/8" DR. Ratchet Handle - 30 Teeth

PARD NO.			
80234	175	324	5



80235 3/8" 系列摇头棘轮扳手 -45 齿
3/8" DR. Ratchet Handle - 45 Teeth

PARD NO.			
80235	175	324	5

RATCHET series

PARD



80236

3/8" 系列棘轮扳手 -45 齿
3/8" DR. Ratchet Handle - 45 Teeth

PARD NO.			
80236	175	408	5



802313

3/8" 系列棘轮扳手
3/8" Ratchet Handle

PARD NO.			
802313	195	290	10



802325

3/8" 系列旋柄棘轮扳手 -36 齿
3/8" Twist Ratchet Handle - 36 Teeth

PARD NO.			
802325	200	320	10



802316

3/8" 系列 T 型带活动棘轮扳手 -72 齿
3/8" DR. T Handle Flexible Ratchet Handle - 72 Teeth

PARD NO.			
802316	458	435	5



80238

3/8" 系列棘轮头 -24 齿
3/8" DR. Ratchet Head - 24 Teeth

PARD NO.			
80238	53	120	10



802314

3/8" 系列旋柄棘轮扳手 -36 齿
3/8" Twist Ratchet Handle - 36 Teeth

PARD NO.			
802314	200	386	10



802326

3/8" 系列旋柄棘轮扳手 -72 齿
3/8" Twist Ratchet Handle - 72 Teeth

PARD NO.			
802326	200	320	10



C8033

3/8" 滑移头驱动杆
3/8" DR. Sliding T Handle

PARD NO.			
C8033165	165	182	10



80239

3/8" 系列棘轮扳手 -60 齿
3/8" DR. Ratchet Handle - 60 Teeth

PARD NO.			
80239	200	320	5



802315

3/8" 系列旋柄棘轮扳手 -72 齿
3/8" Twist Ratchet Handle - 72 Teeth

PARD NO.			
802315	200	386	10



802311N

3/8" 绝缘棘轮扳手
△1000V Insulated
3/8" DR. Ratchet Handle

PARD NO.			
802311N	198	354	10



C8043

3/8" 驱动延长杆
3/8" DR. Extension

PARD NO.			
C8043075	75-3"	78	10
C8043150	150-6"	148	10
C8043250	250-10"	242	10

延长杆系列 EXTENSION BAR series



8043N 3/8" 绝缘延长杆
 △1000V Insulated
 3/8" DR. Extension

PARD NO.	Length	Weight (g)	Box Qty
8043150N	6"	161	10
8043250N	10"	262	10



C80531 3/8" 万向接头
 3/8" DR. Universal Joint

PARD NO.	Length	Weight (g)	Box Qty
C80531	48	31	10



C8093 3/8" 转换接头
 3/8" DR. Adaptor

PARD NO.	Size	Length	Weight (g)	Box Qty
C80932	3/8" (F) × 1/4" (M)	35	31	10
C80934	3/8" (F) × 1/2" (M)	48	47	10



8193TN 3/8" 绝缘 T 型手柄
 △1000V Insulated
 3/8" DR. T Handle

PARD NO.	Size	Length	Weight (g)	Box Qty
8193TN	3/8" DR	196	210	410



C8043W 3/8" 球头驱动延长杆
 3/8" DR. Wobble Extension

PARD NO.	Length	Weight (g)	Box Qty
C8043075W	3"	76	10
C8043150W	6"	146	10
C8043250W	10"	240	10



C806 3/8" 变径转换接头
 Adaptor for 3/8" DR. Extension

PARD NO.	Size	Length	Weight (g)	Box Qty
C80633	3/8" (F) × 3/8" (M)	35	38	10
C80643	1/2" (F) × 3/8" (M)	46	38	10



C8103 3/8" 旋具头卡头
 3/8" DR. Bit Holder

PARD NO.	Size	Length	Weight (g)	Box Qty
C81032	3/8" (F) × 1/4" (F)	30	27	20
C81035	3/8" (F) × 5/16" (F)	30	38	20
C81037	3/8" (F) × 10mm (F)	30	38	20



8193105 3/8" 快速驱动手柄
 3/8" DR. Speed Handle

PARD NO.	Length	Weight (g)	Box Qty
8193105	100	100	10



C8043LK 3/8" 带锁定装置驱动延长杆
 3/8" DR. Lock Extension Bar

PARD NO.	Length	Weight (g)	Box Qty
C8043075LK	75 - 3"	74	10
C8043150LK	150 - 6"	144	10
C8043250LK	250 - 10"	236	10
C8043300LK	300 - 12"	305	10
C8043380LK	380 - 15"	330	10
C8043460LK	460 - 18"	400	10



C8073 3/8" 火花塞套筒
 3/8" DR. Spark Plug Socket

PARD NO.	Size (mm)	Length	Weight (g)	Box Qty
C807314	14	63	74	10
C807316	16	63	96	10
C807318	18	63	125	10
C807320.8	20.8	63	150	10



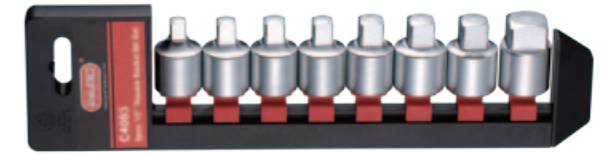
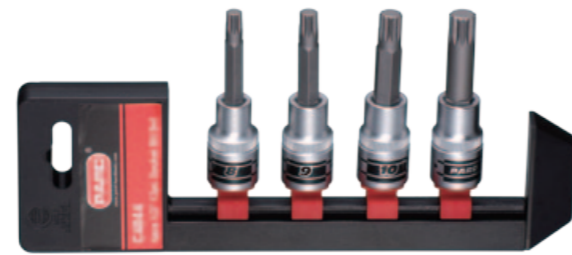
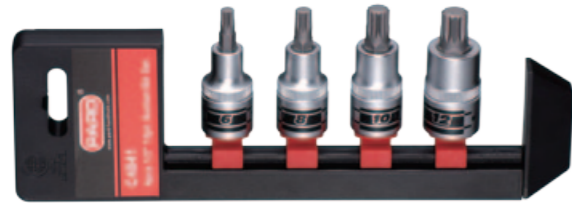
C8153400 3/8" 金属手柄摇把
 3/8" DR. Speed Brace

PARD NO.	Size	Length	Weight (g)	Box Qty
C8153400	3/8"	400	450	10



8193QT 3/8" T 型四角接头手柄
 3/8" DR. Quick-Release T-Handle

PARD NO.	Size	Length	Weight (g)	Box Qty
8193QT	3/8"	325	535	10



1/2" **C4041** 4件 1/2" 内十二星旋具套头加支架组套
4 pcs 1/2" DR. Spline Socket Bit Set

1/2" **C4044** 4件 1/2" 内十二星旋具套头加支架组套
4 pcs 1/2" DR. Spline Socket Bit Set

1/2" **C4061** 6件 1/2" 六方套筒加支架组套
6 pcs 1/2" DR. Star Socket Set

1/2" **C4083** 8件 1/2" 方型套筒加支架组套
8 pcs 1/2" DR. Square Socket Bit Set

PARD NO.	(g)	
C4041	270	10

PARD NO.	(g)	
C4044	500	36

PARD NO.	(g)	
C4061	510	36

PARD NO.	(g)	
C4083	570	36

Contents: 1/2" DR.

Contents: 1/2" DR.

Contents: 1/2" DR.

Contents: 1/2" DR.

C348055 06 ... 12	4 - 1/2" DR. Spline Socket Bit (55mmL)
	M6; M8; M10; M12

C348080 08 ... 12	4 - 1/2" DR. Spline Socket Bit (80mmL)
	M8; M9; M10; M12

C546 10 ... 20	6 - 1/2" DR. Star Socket
	E10; E12; E14; E16; E18; E20

C340 08 ... 19	8 - 1/2" DR. Square Socket Bit
	Size(mm) 8; 9.5; 10; 10.5; 12; 12.7; 13.5; 19



1/2" **C4042** 4件 1/2" 内十二星旋具套头加支架组套
4 pcs 1/2" DR. Spline Socket Bit Set

1/2" **C4051** 5件 1/2" 内十二星旋具套头加支架组套
5 pcs 1/2" DR. Spline Socket Bit Set

1/2" **C4081** 8件 1/2" 六方套筒加支架组套
8 pcs 1/2" DR. 6pt. Flank Socket Set

1/2" **C4084** 8件 1/2" 六方加长套筒组套
8 pcs 1/2" DR. 6pt. Flank Deep Socket Set

PARD NO.	(g)	
C4042	500	36

PARD NO.	(g)	
C4051	550	36

PARD NO.	(g)	
C4081	640	36

PARD NO.	(g)	
C4084	1200	36

Contents: 1/2" DR.

Contents: 1/2" DR.

Contents: 1/2" DR.

Contents: 1/2" DR.

C348080 06 ... 12	4 - 1/2" DR. Spline Socket Bit (80mmL)
	M6; M8; M10; M12

C348055 08 ... 14	4 - 1/2" DR. Spline Socket Bit (55mmL)
	M8; M10; M12; M14

C545 10 ... 22	8 - 1/2" DR. 6pt. Flank Socket
	Size(mm) 10; 12; 13; 14; 17; 19; 21; 22

C54577 12 ... 23	8 - 1/2" DR. 6pt. Flank Deep Socket
	Size(mm) 12; 13; 14; 17; 19; 21; 22; 23

C348055 16T	1 - 1/2" DR. Spline Security Socket Bit
	M16

C348055 16T	1 - 1/2" DR. Spline Security Socket Bit
	M16

1/2" **C4081-9** 8件 1/2" 十二星套筒加支架组套
8 pcs 1/2" DR. 12pt. Flank Socket Set

1/2" **C4084-9** 8件 1/2" 十二星加长套筒组套
8 pcs 1/2" DR. 12pt. Flank Deep Socket Set

PARD NO.	(g)	
C4081-9	640	36

PARD NO.	(g)	
C4084-9	640	36

Contents: 1/2" DR.

Contents: 1/2" DR.

C54910 ... 22	8 - 1/2" DR. 12pt. Flank Socket
	Size(mm) 10; 12; 13; 14; 17; 19; 21; 22

C54977 12 ... 23	8 - 1/2" DR. 12pt. Flank Deep Socket
	Size(mm) 12; 13; 14; 17; 19; 21; 22; 23

套筒/旋具头系列 SOCKET / BIT series



1/4" 3/8" 1/2" 3/4" 1"

C4085 8 件转换接头组套
8 pcs Adaptor Set

PARD NO.	(g)	
C4085	1900	24

Contents: 1/2" DR. ; 3/8" DR.; 1/2" DR.; 3/4" DR.; 1" DR.

C80923	1 - 1/4" DR. Adaptor 1/4" (F)×3/8" (M)
C809 32 ... 34	2 - 3/8" DR. Adaptor 3/8" (F)×1/4" (M); 3/8" (F)×1/2" (M)
C809 43 ... 46	2 - 1/2" DR. Adaptor 1/2" (F)×3/8" (M); 1/2" (F)×3/4" (M)
C809 64 ... 68	2 - 3/4" DR. Adaptor 3/4" (F)×1/2" (M); 3/4" (F)×1" (M)
C80986	1 - 1" DR. Adaptor 1" (F)×3/4" (M)



1/2"

C4087 8 件 1/2" 内十二星旋具头组套
8 pcs 1/2" DR. Spline Bit Set

PARD NO.	(g)	
C4087	835	24

Contents: 1/2" DR.

34845 12 ... 18	4 - 1/2" Spline Bit (45mmL) M12; M14; M16; M18
34875 12 ... 18	4 - 1/2" Spline Bit (75mmL) M12; M14; M16; M18



1/2"

C4101 10 件 1/2" 内六角旋具套头组套
10 pcs 1/2" Hex Socket Bit Set

PARD NO.	(g)	
C4101	1420	10

Contents: 1/2" DR.

C344055 04 ... 19	10 - Hex Socket Bit Size (mm) 4; 5; 6; 7; 8; 10; 12; 14; 17; 19
-------------------	--



1/2"

C4102 10 件 1/2" 内六角星旋具头组套
10 pcs 1/2" Star Socket Bit Set

PARD NO.	(g)	
C4102	1220	10

Contents: 1/2" DR.

C346055 20 ... 70	10 - Star Socket Bit T20; T25; T27; T30; T40; T45; T50; T55; T60; T70
-------------------	---



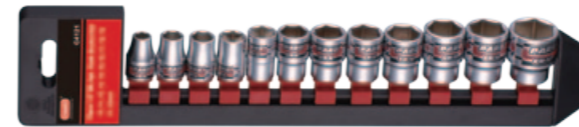
1/2"

C4113 11 件 10 毫米内十二星旋具套头组套
11 pcs 10mm Spline Bit Set

PARD NO.	(g)	
C4113	720	10

Contents: 1/2" DR.

17830 05 ... 12	5 - 10mm Spline Bit (30mmL) M5; M6; M8; M10; M12
17875 05 ... 12	5 - 10mm Spline Bit (75mmL) M5; M6; M8; M10; M12
C81047	1 - 1/2" Bit Holder 1/2" (F)×10mm(F)



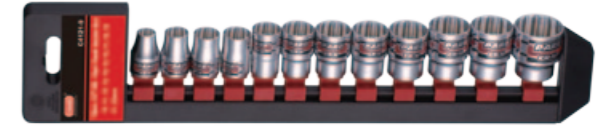
1/2"

C4121 12 件 1/2" 六方套筒加支架组套
12 pcs 1/2" DR. 6pt. Flank Socket Set

PARD NO.	(g)	
C4121	876	10

Contents: 1/2" DR.

C545 10 ... 22	12 - 6pt. Flank Socket Size (mm) 10; 11; 12; 13; 14; 15; 16; 17; 18; 19; 21; 22
----------------	---



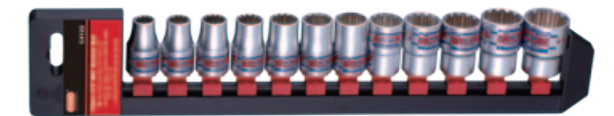
1/2"

C4121-9 12 件 1/2" 十二星套筒加支架组套
12 pcs 1/2" DR. 12pt. Flank Socket Set

PARD NO.	(g)	
C4121-9	876	10

Contents: 1/2" DR.

C549 10 ... 22	12 - 12pt. Flank Socket Size (mm) 10; 11; 12; 13; 14; 15; 16; 17; 18; 19; 21; 22
----------------	--



1/2"

C4122 12 件 1/2" 多用型十二槽套筒加支架组套
12 pcs 1/2" MIT Socket Set

PARD NO.	(g)	
C4122	900	36

Contents: 1/2" DR.

C544 10 ... 22	12 - 1/2" MIT Socket Size (mm) 10; 11; 12; 13; 14; 15; 16; 17; 18; 19; 21; 22 Size (inch) 3/8; 7/16; 15/32; 1/2; 9/16; 19/32; 5/8; 21/32; 11/16; 3/4; 25/32; 13/16; 7/8 Star E12; E14; E16; E18; E20; E22; E24; E26; E28
----------------	---



C4141 14件 1/4" & 3/8" & 1/2" 六星套筒加支架组套
14 pcs 1/4" & 3/8" & 1/2" DR. Star Socket Set

PARD NO.	(g)	
C4141	580	36

Contents: 1/4" & 3/8" & 1/2" DR.

S526 04 ... 08	5 - 1/4" DR. Star Socket
	E4; E5; E6; E7; E8
C536 10 ... 14	4 - 3/8" DR. Star Socket
	E10; E11; E12; E14
C546 16 ... 24	5 - 1/2" DR. Star Socket
	E16; E18; E20; E22; E24



C4151 15件 1/2" 六方加长套筒组套
15 pcs 1/2" DR. 6pt. Flank Deep Socket Set

PARD NO.	(g)	
C4151	1500	10

Contents: 1/2" DR.

C54577 10 ... 32	15 - 1/2" DR. 6pt. Flank Deep Socket
Size (mm)	10; 11; 12; 13; 14; 15; 16; 17; 19; 21; 22; 24; 27; 30; 32

C4151-9 15件 1/2" 十二星加长套筒组套
15 pcs 1/2" DR. 12pt. Flank Deep Socket Set

PARD NO.	(g)	
C4151-9	1500	10

Contents: 1/2" DR.

C54977 10 ... 32	15 - 1/2" DR. 12pt. Flank Deep Socket
Size (mm)	10; 11; 12; 13; 14; 15; 16; 17; 19; 21; 22; 24; 27; 30; 32



C4153 15件 10毫米内六角旋具头组套
15 pcs 10mm Star Bit Set

PARD NO.	(g)	
C4153	850	20

Contents:

17630 20 ... 55	7 - 10mm Star Bit (30 mm)
	T20; T25; T30; T40; T45; T50; T55
17675 20 ... 55	7 - 10 mm Star Bit (75 mm)
	T20; T25; T30; T40; T45; T50; T55
C81047	1 - 1/2" Bit Holder 1/2"(F)×10mm(F)



C4154 15件 10毫米内六角旋具头组套
15 pcs 10mm Hex Bit Set

PARD NO.	(g)	
C4154	880	10

Contents:

17430 04 ... 12	7 - 10 mm Hex Bit (30mmL)
Size (mm)	4; 5; 6; 7; 8; 10; 12
17475 04 ... 12	7 - 10mm Hex Bit (75mmL)
Size (mm)	4; 5; 6; 7; 8; 10; 12
C81047	1 - 1/2" Bit Holder 1/2"(F)×10mm(F)



C4191 19件 1/2" 六方套筒组套
19 pcs 1/2" DR. 6pt. Flank Socket Set

PARD NO.	(g)	
C4191	3300	6

Contents: 1/2" DR.

C545 10 ... 32	14 - 1/2" DR. 6pt. Flank Socket
Size (mm)	10; 11; 12; 13; 14; 15; 16; 17; 18; 19; 20; 21; 22; 24
80247	1 - 1/2" DR. 24 Teeth Ratchet Handle
C8044125...250	2 - 1/2" DR. Extension 5"; 10"
C80541	1 - 1/2" DR. Universal Joint
C80634	1 - Adaptor For 1/2" DR. Extension 3/8"(F)×1/2"(M)

套筒/旋具头系列 SOCKET / BIT series



C4221 22 件 1/2" 六方套筒组套
22 pcs 1/2" DR. 6pt. Flank Socket Set

PARD NO.	(g)	
C4221	4600	4

Contents: 1/2" DR.

C545 10 ... 32	17 - 1/2" DR. 6pt. Flank Socket
Size (mm)	10; 11; 12; 13; 14; 15; 16; 17; 18; 19; 20; 21; 22; 24; 27; 30; 32
80249	1 - 1/2" DR. 60 Teeth Ratchet Handle
C8034250	1 - 1/2" DR. Sliding T Handle
C8044125...250	2 - 1/2" DR. Extension 5"; 10"
C80541	1 - 1/2" DR. Universal Joint



C4242-9 24 件 1/2" 十二星套筒组套
24 pcs 1/2" DR. 12pt. Flank Socket Set

PARD NO.	(g)	
C4242-9	5500	4

Contents: 1/2" DR.

C549 10 ... 32	18 - 1/2" DR. 12pt. Flank Socket
Size (mm)	10; 11; 12; 13; 14; 15; 16; 17; 18; 19; 20; 21; 22; 23; 24; 27; 30; 32
C807420.8	1 - 1/2" DR. Spark Plug Socket 20.8mm
802410	1 - 1/2" DR. 36 Teeth Ratchet Handle
C8334300	1 - 1/2" DR. Adjustable Handle
C8034300	1 - 1/2" DR. Sliding T Handle
C8154315	1 - 1/2" DR. L Handle
C8044050W	1 - 1/2" DR. Wobble Extension



C4241 24 件 1/2" 六方套筒组套
24 pcs 1/2" DR. 6pt. Flank Socket Set

PARD NO.	(g)	
C4241	5460	4

Contents: 1/2" DR.

C545 10 ... 32	18 - 6pt. Flank Socket
Size (mm)	10; 11; 12; 13; 14; 15; 16; 17; 18; 19; 20; 21; 22; 23; 24; 27; 30; 32
80242	1 - 72 Teeth Round Ratchet Handle
C80541	1 - Universal Joint
C8044 125 ... 250	2 - Extension Bar 5"; 10"
C80634	1 - Adaptor for 1/2" DR. Extension 3/8" (F) x 1/2" (M)
C8014380	1 - Swivel Handle



C4241

PARD NO.	
80242	1 - 72 Teeth Ratchet Handle



C4241-4

PARD NO.	
80244	1 - 36 Teeth Ratchet Handle



C4241-1

PARD NO.	
80241	1 - 24 Teeth Ratchet Handle



C4241-7

PARD NO.	
80247	1 - 24 Teeth Thin Ratchet Handle



C4241-3

PARD NO.	
80243	1 - 72 Teeth Flexible Round Ratchet Handle



C4241-9

PARD NO.	
80249	1 - 60 Teeth Ratchet Handle



C4242 24 件 1/2" 六方套筒组套
24 pcs 1/2" DR. 6pt. Flank Socket Set

PARD NO.	(g)	
C4242	5500	4

Contents: 1/2" DR.

C545 10 ... 32	18 - 1/2" DR. 6pt. Flank Socket
Size (mm)	10; 11; 12; 13; 14; 15; 16; 17; 18; 19; 20; 21; 22; 23; 24; 27; 30; 32
C807420.8	1 - 1/2" DR. Spark Plug Socket 20.8mm
802410	1 - 1/2" DR. 36 Teeth Ratchet Handle
C8334300	1 - 1/2" DR. Adjustable Handle
C8034300	1 - 1/2" DR. Sliding T Handle
C8154315	1 - 1/2" DR. L Handle
C8044050W	1 - 1/2" DR. Wobble Extension



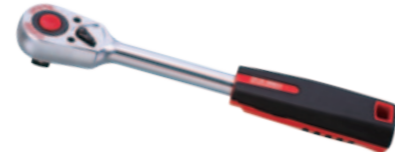
C4291 29 件 1/2" 多用型十二槽套筒组套
29 pcs 1/2" DR. 12pt. MIT Socket Set

PARD NO.	(g)	4
C4291	5600	4
Contents: 1/2" DR.		
C544 06 ... 22	21 - 1/2" DR. 12pt. MIT Socket	
Size (mm)	10; 11; 12; 13; 14; 15; 16; 17; 18; 19; 20; 21; 22; 23; 24; 26; 27; 28; 29; 30; 32	
Size (inch)	3/8; 7/16; 15/32; 1/2; 9/16; 19/32; 5/8; 21/32; 11/16; 3/4; 25/32; 13/16; 7/8; 29/32; 15/16; 1"; 1-1/16; 1-3/32; 1-1/8; 1-3/16; 1-1/4	
Star	E12; E14; E16; E18; E20; E22; E24; E26; E28; E30; E32; E34; E36; E38; E40	
80242	1 - 72 Teeth Round Ratchet Handle	
C80541	1 - 1/2" DR. Universal Joint	
C8044 125 ... 250	1 - 1/2" DR. Extension Bar 125 - 5"; 250 - 10"	
C8074 16 ... 20.8	2 - 1/2" DR. Spark Plug Socket 16; 20.8 mm	
C8014380	1 - 1/2" DR. Swivel Handle	
C80634	1 - Adaptor For 1/2" DR. Extension 3/8" (F) x 1/2" (M)	



C4291

PARD NO.	1 - 72 Teeth Ratchet Handle
80242	1 - 72 Teeth Ratchet Handle



C4291-4

PARD NO.	1 - 36 Teeth Ratchet Handle
80244	1 - 36 Teeth Ratchet Handle



C4291-1

PARD NO.	1 - 24 Teeth Ratchet Handle
80241	1 - 24 Teeth Ratchet Handle



C4291-7

PARD NO.	1 - 24 Teeth Thin Ratchet Handle
80247	1 - 24 Teeth Thin Ratchet Handle



C4291-3

PARD NO.	1 - 72 Teeth Flexible Round Ratchet Handle
80243	1 - 72 Teeth Flexible Round Ratchet Handle



C4291-9

PARD NO.	1 - 60 Teeth Ratchet Handle
80249	1 - 60 Teeth Ratchet Handle



C4293 29 件 1/2" 多用型十二槽套筒组套
29 pcs 1/2" DR. MIT Driver Socket Set

PARD NO.	(g)	4
C4293	5635	4
Contents:		
C54410 ... 32	22 - 1/2" DR. MIT Socket	
Size (mm)	10; 11; 12; 13; 14; 15; 16; 17; 18; 19; 20; 21; 22; 23; 24; 25; 26; 27; 28; 29; 30; 32	
Size (inch)	3/8; 7/16; 15/32; 1/2; 9/16; 19/32; 5/8; 21/32; 11/16; 3/4; 25/32; 13/16; 7/8; 29/32; 15/16; 31/32; 1-1/16; 1-3/32; 1-1/8; 1-3/16; 1-1/4	
Star	E12; E14; E16; E18; E20; E22; E24; E26; E28; E30; E32; E34	
C8044125...250	2 - 1/2" DR. Extension 125 - 5"; 250 - 10"	
80249	1 - 1/2" DR. 60 Teeth Ratchet Handle	
C80541	1 - 1/2" DR. Universal Joint	
C807416 ... 20.8	2 - 1/2" DR. Spark Plug Socket Size (mm) 16; 20.8	
C80634	1 - Adaptor for 1/2" DR. Extension 3/8" (F) x 1/2" (M)	



C4391 39 件 1/2" 六方套筒组套
39 pcs 1/2" DR. 6pt. Socket Set

PARD NO.	(g)	4
C4391	6285	4
Contents:		
C545 10 ... 32	18 - 1/2" DR. 6pt. Flank Socket	
Size (mm)	10; 11; 12; 13; 14; 15; 16; 17; 18; 19; 20; 21; 22; 23; 24; 27; 30; 32	
C54577 14 ... 22	5 - 1/2" DR. 6pt. Flank Deep Socket Size (mm) 14; 15; 17; 19; 22	
C546 10 ... 24	9 - 1/2" DR. Star Socket E10; E11; E12; E14; E16; E18; E20; E22; E24	
C8044 125 ... 250	2 - Extension Bar 125 - 5"; 250 - 10"	
80249	1 - 1/2" DR. 60 Teeth Ratchet Handle	
C80541	1 - 1/2" DR. Universal Joint	
C80634	1 - Adaptor for 1/2" DR. Extension 3/8" (F) x 1/2" (M)	
C8074 16 ... 20.8	2 - 1/2" DR. Spark Plug Socket Size (mm) 16; 20.8	



C4402 40 件 1/2" 六方套筒组套
40 pcs 1/2" DR. 6pt. Socket Set

PARD NO.	(g)	
C4402	6464	4

Contents:

C545 10 ... 32	18 - 1/2" DR. 6pt. Flank Socket
Size (mm)	10; 11; 12; 13; 14; 15; 16; 17; 18; 19; 20; 21; 22; 23; 24; 27; 30; 32
C54577 14 ... 22	5 - 1/2" DR. 6pt. Flank Deep Socket
Size (mm)	14; 15; 17; 19; 22
C546 10 ... 24	9 - 1/2" DR. Star Socket
	E10; E11; E12; E14; E16; E18; E20; E22; E24
C8044 125 ... 250	2 - Extension Bar 125 - 5"; 250 - 10"
80249	1 - 1/2" DR. 60 Teeth Ratchet Handle
C80541	1 - 1/2" DR. Universal Joint
C8014380	1 - 1/2" DR. Swivel Handle
8154410	1 - 1/2" DR. Speed Brace
8074 16 ... 20.8	2 - 1/2" DR. Spark Plug Socket
Size (mm)	16; 20.8



C4431 43 件 1/2" 六方套筒组套
43 pcs 1/2" DR. 6pt. Socket Set

PARD NO.	(g)	
C4431	8250	4

Contents: 1/2" DR.

C545 08 ... 32	23 - 1/2" DR. 6pt. Flank Socket
Size (mm)	8; 9; 10; 11; 12; 13; 14; 15; 16; 17; 18; 19; 20; 21; 22; 23; 24; 25; 26; 27; 28; 30; 32
C545 3.8 ... 1.1.4	14 - 1/2" DR. 6pt. Flank Socket
Size (inch)	3/8; 7/16; 1/2; 9/16; 5/8; 11/16; 3/4; 13/16; 7/8; 15/16; 1; 1-1/8; 1-3/16; 1-1/4
802410	1 - 1/2" DR. 36 Teeth Ratchet Handle
C8334300	1 - 1/2" DR. Adjustable Handle
C8034300	1 - 1/2" DR. Sliding T Handle
C8154315	1 - 1/2" DR. L Handle
C8044050W	1 - 1/2" DR. Wobble Extension
C80541	1 - 1/2" DR. Universal Joint



C4431-9 43 件 1/2" 十二星套筒组套
43 pcs 1/2" DR. 12pt. Socket Set

PARD NO.	(g)	
C4431-9	8250	4

Contents: 1/2" DR.

C549 08 ... 32	23 - 1/2" DR. 12pt. Flank Socket
Size (mm)	8; 9; 10; 11; 12; 13; 14; 15; 16; 17; 18; 19; 20; 21; 22; 23; 24; 25; 26; 27; 28; 30; 32
C549 3.8 ... 1.1.4	14 - 1/2" DR. 12pt. Flank Socket
Size (inch)	3/8; 7/16; 1/2; 9/16; 5/8; 11/16; 3/4; 13/16; 7/8; 15/16; 1; 1-1/8; 1-3/16; 1-1/4
802410	1 - 1/2" DR. 36 Teeth Ratchet Handle
C8334300	1 - 1/2" DR. Adjustable Handle
C8034300	1 - 1/2" DR. Sliding T Handle
C8154315	1 - 1/2" DR. L Handle
C8044050W	1 - 1/2" DR. Wobble Extension
C80541	1 - 1/2" DR. Universal Joint



C4561 56 件 1/2" 六方套筒及旋具套头组套
56 pcs 1/4" & 1/2" DR. 6pt. Socket & Socket Bit Set

PARD NO.	(g)	
C4561	4580	4

Contents: 1/4" & 1/2" DR.

S525 04 ... 13	12 - 1/4" 6pt. Flank Socket
Size (mm)	4; 4.5; 5; 5.5; 6; 7; 8; 9; 10; 11; 12; 13
C545 10 ... 24	14 - 1/2" 6pt. Flank Socket
Size (mm)	10; 11; 12; 13; 14; 15; 16; 17; 18; 19; 20; 21; 22; 24;
C32132 1 ... 3	3 - 1/4" Dr. Phillips Socket Bit
	PH.1; PH.2; PH.3
C32232 1 ... 3	3 - 1/4" Dr. Pozidriv Socket Bit
	PZ.1; PZ.2; PZ.3
C32332 04 ... 065	3 - 1/4" Dr. Slotted Socket Bit
	4; 5.5; 6.5
C32432 03 ... 08	5 - 1/4" Dr. Hex Socket Bit
	3; 4; 5; 6; 8 mm
764-3	3 - Hex Key 3 In 1
	1.5; 2; 2.5mm
80229	1 - 1/4" Dr. 60 Teeth Ratchet Handle
80247	1 - 1/2" Dr. 24 Teeth Ratchet Handle
C80521	1 - 1/4" Dr. Universal Joint
C80541	1 - 1/2" Dr. Universal Joint
C8042 050 ... 100	2 - 1/4" Dr. Extension Bar 2"; 4"
C8044 125 ... 250	2 - 1/2" Dr. Extension Bar 5"; 10"
8111	1 - 1/4" Dr. Flexible Inhex Extension
C8032115	1 - 1/4" Dr. Sliding T Handle
C80634	1 - Adaptor For 1/2" Dr. Extension
C81225	1 - 1/4" Dr. Magnetic Socket Pick-Up
8142	1 - Spinner 6"



C4401 40 件 1/2" 旋具头组套
40 pcs 1/2" Bit Set

PAR D NO.	(g)	
C4401	2800	4

Contents: 1/2" DR.

17430 04 ... 12	7 - Hex Bit (30mmL)
Size (mm)	4; 5; 6; 7; 8; 10; 12
17475 04 ... 12	7 - Hex Bit (75mmL)
Size (mm)	4; 5; 6; 7; 8; 10; 12
17630 20 ... 55	7 - Star Bit (30mmL)
	T20; T25; T30; T40; T45; T50; T55
17675 20 ... 55	7 - Star Bit (75mmL)
	T20; T25; T30; T40; T45; T50; T55
17830 05 ... 12	5 - Spline Bit (30mmL)
	M5; M6; M8; M10; M12
17875 05 ... 12	5 - Spline Bit (75mmL)
	M5; M6; M8; M10; M12
C81037	1 - 3/8" DR. Bit Holder 3/8(F)×10mm(F)
C81047	1 - 1/2" DR. Bit Holder 1/2(F)×10mm(F)



C4441 44 件 1/2" 旋具头组套
44 pcs 1/2" Bit Set

PAR D NO.	(g)	
C4441	2750	4

Contents: 1/2" DR.

17430 04 ... 12	7 - Hex Bit (30mmL)
Size (mm)	4; 5; 6; 7; 8; 10; 12
17475 04 ... 12	7 - Hex Bit (75mmL)
Size (mm)	4; 5; 6; 7; 8; 10; 12
17630 20 ... 60	8 - Star Bit (30mmL)
	T20; T25; T30; T40; T45; T50; T55; T60
17675 20 ... 60	8 - Star Bit (75mmL)
	T20; T25; T30; T40; T45; T50; T55; T60
17830 05 ... 12	5 - Spline Bit (30mmL)
	M5; M6; M8; M10; M12
17875 05 ... 15	5 - Spline Bit (75mmL)
	M5; M6; M8; M10; M12
C34607080	1 - Star Socket Bit (70mmL) T - 80
C34610070	1 - Star Socket Bit (100mmL) T - 70
C81037	1 - 3/8" DR. Bit Holder 3/8(F)×10mm(F)
C81047	1 - 1/2" DR. Bit Holder 1/2(F)×10mm(F)



C4441T 44 件 1/2" 旋具头组套
44 pcs 1/2" Bit Set

PAR D NO.	(g)	
C4441T	2750	4

Contents: 1/2" DR.

17430 04 ... 12	7 - Hex Bit (30mmL)
Size (mm)	4; 5; 6; 7; 8; 10; 12
17475 04 ... 12	7 - Hex Bit (75mmL)
Size (mm)	4; 5; 6; 7; 8; 10; 12
17730 20 ... 60	8 - Star Tamperproof Bit (30mmL)
	T20H; T25H; T30H; T40H; T45H; T50H; T55H; T60H
17775 20 ... 60	8 - Star Tamperproof Bit (75mmL)
	T20H; T25H; T30H; T40H; T45H; T50H; T55H; T60H
17830 05 ... 12	5 - Spline Bit (30mmL)
	M5; M6; M8; M10; M12
17875 05 ... 15	5 - Spline Bit (75mmL)
	M5; M6; M8; M10; M12
C34707080	1 - Star Tamperproof Socket Bit T-80H (70mmL)
C34710070	1 - Star Tamperproof Socket Bit T-70H (100mmL)
C81037	1 - 3/8" DR. Bit Holder 3/8(F)×10mm(F)
C81047	1 - 1/2" DR. Bit Holder 1/2(F)×10mm(F)



4591 59 件 5/16" 及 10 毫米
内十二星及内六槽旋具头组套
59 pcs 5/16" DR. & 10mm Spline & Ribe Bit Set

PAR D NO.	(g)	
4591	4965	4

Contents:

15830 05 ... 08	3 - 5/16" DR. Spline Bit (30mmL) M5; M6; M8
15870 05 ... 08	3 - 5/16" DR. Spline Bit (70mmL) M5; M6; M8
158120 05 ... 08	3 - 5/16" DR. Spline Bit (120mmL) M5; M6; M8
158180 08	1 - 5/16" DR. Spline Bit (180mmL) M8
15930 04 ... 08	5 - 5/16" DR. Ribe Bit (30mmL) M4; M5; M6; M7; M8
15970 05 ... 08	4 - 5/16" DR. Ribe Bit (70 mmL) M5; M6; M7; M8
159120 08	1 - 5/16" DR. Ribe Bit (120 mmL) M8
159180 08	1 - 5/16" DR. Ribe Bit (180 mmL) M8
17830 09 ... 14	4 - 10 mm Spline Bit (30mmL) M9; M10; M12; M14
17875 09 ... 14	4 - 10 mm Spline Bit (75 mmL) M9; M10; M12; M14
178120 09 ... 14	4 - 10 mm Spline Bit (120 mmL) M9; M10; M12; M14
178180 09 ... 14	4 - 10 mm Spline Bit (180 mmL) M9; M10; M12; M14
17930 09 ... 14	5 - 10 mm Ribe Bit (30mmL) M9; M10; M12; M13; M14
17975 09 ... 14	5 - 10 mm Ribe Bit (75mmL) M9; M10; M12; M13; M14
179120 09 ... 14	5 - 10 mm Ribe Bit (120 mmL) M9; M10; M12; M13; M14
179180 09 ... 14	5 - 10mm Ribe Bit (180 mmL) M9; M10; M12; M13; M14
81045SP ...47SP	2 - 1/2" DR. Bit Holder (Auto Spring) 1/2" (F)×5/16" (F); 1/2" (F)×10mm (F)

套筒/旋具头系列 SOCKET / BIT series



4631 63 pcs 5/16" DR. & 10mm Hex & Star Bit Set

PARD NO.	(g)	
4631	5170	4

Contents:

15430 04 ... 08	5- ⁵ / ₁₆ " DR. Hex Bit (30mmL) H4; H5; H6; H7; H8
15470 05 ... 08	4- ⁵ / ₁₆ " DR. Hex Bit (70mmL) H5; H6; H7; H8
154120 05 ... 08	4- ⁵ / ₁₆ " DR. Hex Bit (120mmL) H5; H6; H7; H8
154180 05 ... 08	4- ⁵ / ₁₆ " DR. Hex Bit (180mmL) H5; H6; H7; H8
15630 20 ... 50	7- ⁵ / ₁₆ " DR. Star Bit (30mmL) T20; T25; T27; T30; T40; T45; T50
15670 20 ... 50	7- ⁵ / ₁₆ " DR. Star Bit (70mmL) T20; T25; T27; T30; T40; T45; T50
156120 40 ... 50	3- ⁵ / ₁₆ " DR. Star Bit (120mmL) T40; T45; T50
156180 40 ... 50	3- ⁵ / ₁₆ " DR. Star Bit (180mmL) T40; T45; T50
17430 10 ... 14	3- 10 mm Hex Bit (30mmL) H10; H12; H14
17475 10 ... 14	3- 10 mm Hex Bit (75 mmL) H10; H12; H14
174120 10 ... 14	3- 10 mm Hex Bit (120 mmL) H10; H12; H14
174180 10 ... 14	3- 10 mm Hex Bit (180 mmL) H10; H12; H14
17630 55 ... 70	3- 10 mm Star Bit (30 mmL) T55; T60; T70
17675 55 ... 70	3- 10 mm Star Bit (75 mmL) T55; T60; T70
176120 55 ... 70	3- 10 mm Star Bit (120mmL) T55; T60; T70
176180 55 ... 70	3- 10 mm Star Bit (180 mmL) T55; T60; T70
81045SP ... 47SP	2- 1/2" DR. Bit Holder (Auto Spring) 1/2" (F) x 5/16" (F); 1/2" (F) x 10 mm (F)

C4651 65 pcs 1/4" & 1/2" 六方套筒组套
65 pcs 1/4" & 1/2" DR. Socket Set

PARD NO.	(g)	
C4651	5465	4

Contents:

S525 04 ... 13	12 - 1/4" DR. 6pt. Flank Socket Size (mm) 4; 4.5; 5; 5.5; 6; 7; 8; 9; 10; 11; 12; 13
80229	1 - 1/4" DR. 60 Teeth Ratchet Handle
C80521	1 - 1/4" DR. Universal Joint
C8143	1 - 1/4" DR. Spinner
C8042 050 ... 100	2 - 1/4" DR. Extension 50 - 2"; 100 - 4"
C81225	1 - 1/4" DR. Magnetic Socket Pick - up
C32132 1 ... 3	3 - 1/4" DR. Phillips Socket Bit PH.1; PH.2; PH.3
C32232 1 ... 3	3 - 1/4" DR. Pozidriv Socket Bit PZ.1; PZ.2; PZ.3
C32332 04 ... 065	3 - 1/4" DR. Slotted Socket Bit 0.8x4; 1.0x5.5; 1.2x6.5
C32632 08 ... 40	8 - 1/4" DR. Star Socket Bit T8; T10; T15; T20; T25; T27; T30; T40
C32432 03 ... 10	7 - 1/4" DR. Hex Socket Bit Size (mm) 3; 4; 5; 6; 7; 8; 10
C8032115	1 - 1/4" DR. Sliding T Handle
C545 10 ... 32	17 - 1/2" DR. 6pt. Flank Socket Size (mm) 10; 11; 12; 13; 14; 15; 16; 17; 18; 19; 21; 22; 23; 24; 27; 30; 32
80249	1 - 1/2" DR. 60 Teeth Ratchet Handle
C8044 125 ... 250	2 - 1/2" DR. Extension 125 - 5"; 250 - 10"
C80541	1 - 1/2" DR. Universal Joint
C80634	1 - Adaptor for 1/2" DR. Extension 3/8" (F) x 1/2" (M)



C4771

PARD NO.	
80222	1 - 1/4" 72 Teeth Ratchet Handle
80242	1 - 1/2" 72 Teeth Ratchet Handle



C4771-1

PARD NO.	
80221	1 - 1/4" 24 Teeth Ratchet Handle
80241	1 - 1/2" 24 Teeth Ratchet Handle



C4771-3

PARD NO.	
80223	1 - 1/4" 72 Teeth Flexible Round Ratchet Handle
80243	1 - 1/2" 72 Teeth Flexible Round Ratchet Handle



C4771-4

PARD NO.	
80224	1 - 1/4" 20 Teeth Ratchet Handle
80244	1 - 1/2" 36 Teeth Ratchet Handle

C4771 77 pcs 1/4" & 1/2" Combination Socket Set

PARD NO.	(g)	
C4771	6400	4

Contents: 1/4" & 1/2" DR.

S525 04 ... 13	12 - 1/4" DR. 6pt. Flank Socket Size (mm) 4; 4.5; 5; 5.5; 6; 7; 8; 9; 10; 11; 12; 13
C321321 ... 3	3 - 1/4" DR. Phillips Socket Bit PH.1; PH.2; PH.3
C32232 1 ... 3	3 - 1/4" DR. Pozidriv Socket Bit PZ.1; PZ.2; PZ.3
C32332 04 ... 065	3 - 1/4" DR. Slotted Socket Bit 0.8x4; 1.0x5.5; 1.2x6.5
C32432 03 ... 10	7 - 1/4" DR. Hex Socket Bit Size (mm) 3; 4; 5; 6; 7; 8; 10
C32632 08 ... 40	8 - 1/4" DR. Star Socket T8; T10; T15; T20; T25; T27; T30; T40
C81225	1 - 1/4" DR. Magnetic Socket Pick-Up
C8143	1 - 1/4" DR. Spinner
C8042 050 ... 150	3 - Extension Bar 2"; 4"; 6"
C80521	1 - 1/4" DR. Universal Joint
C8032115	1 - 1/4" DR. Sliding T Handle
80222	1 - 1/4" 72 Teeth Ratchet Handle
764 015...025	3 - Hex Key 1.5; 2; 2.5
C545 14 ... 32	14 - 1/2" DR. 6pt. Flank Socket Size (mm) 14; 15; 16; 17; 18; 19; 20; 21; 22; 23; 24; 27; 30; 32
80242	1 - 1/2" 72 Teeth Ratchet Handle
C80541	1 - 1/2" DR. Universal Joint
C8044 125 ... 250	2 - 1/2" DR. Extension Bar 5"; 10"
C80634	1 - Adaptor for 1/2" DR. extension 3/8" (F) x 1/2" (M)
C8074 16 ... 20.8	2 - 1/2" DR. Spark Plug Socket
C755 08 ... 22	9 - Combination Wrench Size (mm) 8; 10; 11; 12; 13; 14; 17; 19; 22



C4771-7

PARD NO.	
80221	1 - 1/4" 24 Teeth Ratchet Handle
80247	1 - 1/2" 24 Teeth Thin Ratchet Handle



C4771-9

PARD NO.	
80229	1 - 1/4" 60 Teeth Ratchet Handle
80249	1 - 1/2" 60 Teeth Ratchet Handle



C4811 81 件 1/4"、3/8" 及 1/2" 六方套筒组套
81 pcs 1/4" & 3/8" & 1/2" DR. Socket Set

PARD NO.	(g)	Box
C4811	8280	2
Contents: 1/4" DR.		
S525 04 ... 13	12 - 6pt Flank Socket	
	Size (mm)	4; 4.5; 5; 5.5; 6; 7; 8; 9; 10; 11; 12; 13
32132 1 ... 3	3 - Phillips Socket Bit PH.1; PH.2; PH.3	
32232 1 ... 3	3 - Pozidriv Socket Bit PZ.1; PZ.2; PZ.3	
32332 04 ... 065	3 - Slotted Socket Bit	
		4; 5.5; 6.5
32432 03 ... 08	5 - Hex Socket Bit	
		3; 4; 5; 6; 8 mm
764-3	3 - Hex Key 3 In 1	
		1.5; 2; 2.5mm
80229	1 - 60 Teeth Ratchet Handle	
C8032115	1 - Sliding T Handle	
C80521	1 - Universal Joint	
C81225	1 - Magnetic Socket Pick-up	
C8042 050 ... 100	2 - Extension Bar	2"; 4"
8142	1 - Spinner	6"
8111	1 - Flexible Inhex Extension	

C4811 81 件 1/4"、3/8" 及 1/2" 六方套筒组套
81 pcs 1/4" & 3/8" & 1/2" DR. Socket Set

Contents: 3/8" DR.		
C535 06 ... 22	17 - 6pt. Flank Socket	
	Size (mm)	6; 7; 8; 9; 10; 11; 12; 13; 14; 15; 16; 17; 18; 19; 20; 21; 22
C8043 075 ... 150	2 - Extension	3"; 6"
C80531	1 - Universal Joint	
80239	1 - 60 Teeth Ratchet Handle	
C8033165	1 - Sliding T Handle	
Contents: 1/2" DR.		
C545 10 ... 32	17 - 1/2" DR. 6pt. Flank Socket	
	Size (mm)	10; 11; 12; 13; 14; 15; 16; 17; 18; 19; 20; 21; 22; 24; 27; 30; 32
80249	1 - 1/2" DR. 60 Teeth Ratchet Handle	
C8034250	1 - 1/2" DR. Sliding T Handle	
C8044125...250	2 - 1/2" DR. Extension	5"; 10"
C80541	1 - 1/2" DR. Universal Joint	



C4941

PARD NO.	Description
80222	1 - 1/4" 72 Teeth Ratchet Handle
80242	1 - 1/2" 72 Teeth Ratchet Handle

C4941-4

PARD NO.	Description
80224	1 - 1/4" 20 Teeth Ratchet Handle
80244	1 - 1/2" 36 Teeth Ratchet Handle

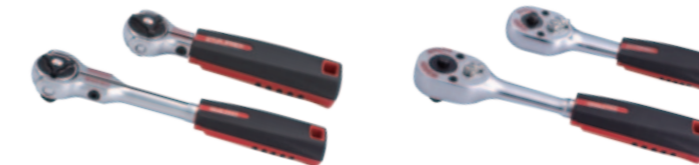


C4941-1

PARD NO.	Description
80221	1 - 1/4" 24 Teeth Ratchet Handle
80241	1 - 1/2" 24 Teeth Ratchet Handle

C4941-7

PARD NO.	Description
80221	1 - 1/4" 24 Teeth Ratchet Handle
80247	1 - 1/2" 24 Teeth Thin Ratchet Handle



C4941-3

PARD NO.	Description
80223	1 - 1/4" 72 Teeth Flexible Round Ratchet Handle
80243	1 - 1/2" 72 Teeth Flexible Round Ratchet Handle

C4941-9

PARD NO.	Description
80229	1 - 1/4" 60 Teeth Ratchet Handle
80249	1 - 1/2" 60 Teeth Ratchet Handle

C4941 94 件 1/4" 及 1/2" 六方套筒组套
94 pcs 1/4" & 1/2" Combination Socket Set

PARD NO.	(g)	Box
C4941	5500	3
Contents: 1/4" & 1/2" DR.		
S525 04 ... 12	9 - 1/4" DR. 6pt. Flank Socket	
	Size (mm)	4; 5; 6; 7; 8; 9; 10; 11; 12
S526 04 ... 08	5 - 1/4" DR. Star Socket	
		E4; E5; E6; E7; E8
121301 ... 3	3 - 1/4" Phillips Bit (30mmL)	
		PH.1; PH.2; PH.3
122301 ... 3	3 - 1/4" Pozidriv Bit (30mmL)	
		PZ.1; PZ.2; PZ.3
12330 04 ... 065	3 - 1/4" Slotted Bit (30mmL)	
		0.8x4; 1.0x5.5; 1.2x6.5
12430 03 ... 08	6 - Hex Bit (30mmL)	3; 4; 5; 6; 7; 8
12730 08 ... 40	8 - Star Tamperproof Bit (30mmL)	
		T8H; T10H; T15H; T20H; T25H; T27H; T30H; T40H
80222	1 - 1/4" DR. 72 Teeth Ratchet Handle	
C81022	1 - 1/4" DR. Bit Holder	1/4" (F) x 1/4" (F)
C8143	1 - 1/4" DR. Spinner	
C8032115	1 - 1/4" DR. Sliding T Handle	
C80521	1 - 1/4" DR. Universal Joint	
C8042 050 ... 100	2 - 1/4" DR. Extension Bar	2"; 4"
C545 10 ... 32	16 - 1/2" DR. 6pt. Flank Socket	
	Size (mm)	10; 11; 12; 13; 14; 15; 16; 17; 18; 19; 21; 22; 24; 27; 30; 32
C546 10 ... 24	8 - 1/2" DR. Star Socket	
		E10; E11; E12; E14; E16; E18; E20; E24
C755 08 ... 22	10 - Combination Wrench	
	Size (mm)	8; 10; 11; 12; 13; 14; 15; 17; 19; 22
C7112S	1 - Phillips Screwdriver	PH.2
C7112	1 - Phillips Screwdriver	PH.2
C713065S	1 - Slotted Screwdriver	6.5mm
C713065	1 - Slotted Screwdriver	6.5mm
611160	1 - Combination Pliers	160mm - 6"
610160	1 - Long Nose Pliers	160mm - 6"
613A250	1 - Water pump Pliers	10"
6390300	1 - Engineer Hammer	(300g)
80242	1 - 1/2" DR. 72 Teeth Ratchet Handle	
C80541	1 - 1/2" DR. Universal Joint	
C8014380	1 - Swivel Handle	
C80634	1 - Adaptor for 1/2" DR. Extension	
		3/8" (F) x 1/2" (M)
C8044 125 ... 250	2 - 1/2" DR. Extension Bar	5"; 10"
C8074 16 ... 20.8	2 - 1/2" DR. Spark Plug Socket	
	Size (mm)	16; 20.8 mm



C4981 98 件 1/2" 套筒及内十二星及内六槽旋具头组套
98 pcs 1/2" DR. Socket & Spline & Ribe Bit Set

PAR D NO.	(g)	📦
C4981	11240	2

Contents:

C545 10 ... 32	18 - 1/2" DR. 6pt. Flank Socket
Size (mm)	10; 11; 12; 13; 14; 15; 16; 17; 18; 19; 20; 21; 22; 23; 24; 27; 30; 32
C54577 14 ... 22	5 - 1/2" DR. 6pt. Flank Deep Socket
Size (mm)	14; 15; 17; 19; 22
C546 10 ... 24	9 - 1/2" DR. Star Socket
	E10; E11; E12; E14; E16; E18; E20; E22; E24
C8044 125 ... 250	2 - Extension Bar 125 - 5" ; 250 - 10"
80249	1 - 1/2" DR. 60 Teeth Ratchet Handle
C80541	1 - 1/2" DR. Universal Joint
C80634	1 - Adaptor for 1/2" DR. Extension 3/8" (F) x 1/2" (M)
C8074 16 ... 20.8	2 - 1/2" DR. Spark Plug Socket
Size (mm)	16; 20.8

C4981

98 件 1/2" 套筒及内十二星及内六槽旋具头组套
98 pcs 1/2" DR. Socket & Spline & Ribe Bit Set

Contents:

15830 05 ... 08	3 - 5/16" DR. Spline Bit (30mmL)
	M5; M6; M8
15870 05 ... 08	3 - 5/16" DR. Spline Bit (70mmL)
	M5; M6; M8
158120 05 ... 08	3 - 5/16" DR. Spline Bit (120mmL)
	M5; M6; M8
158180 08	1 - 5/16" DR. Spline Bit (180mmL) M8
15930 04 ... 08	5 - 5/16" DR. Ribe Bit (30mmL)
	M4; M5; M6; M7; M8
15970 05 ... 08	4 - 5/16" DR. Ribe Bit (70 mmL)
	M5; M6; M7; M8
159120 08	1 - 5/16" DR. Ribe Bit (120 mmL) M8
159180 08	1 - 5/16" DR. Ribe Bit (180 mmL) M8
17830 09 ... 14	4 - 10 mm Spline Bit (30mmL)
	M9; M10; M12; M14
17875 09 ... 14	4 - 10 mm Spline Bit (75 mmL)
	M9; M10; M12; M14
178120 09 ... 14	4 - 10 mm Spline Bit (120 mmL)
	M9; M10; M12; M14
178180 09 ... 14	4 - 10 mm Spline Bit (180 mmL)
	M9; M10; M12; M14
17930 09 ... 14	5 - 10 mm Ribe Bit (30mmL)
	M9; M10; M12; M13; M14
17975 09 ... 14	5 - 10 mm Ribe Bit (75mmL)
	M9; M10; M12; M13; M14
179120 09 ... 14	5 - 10 mm Ribe Bit (120 mmL)
	M9; M10; M12; M13; M14
179180 09 ... 14	5 - 10mm Ribe Bit (180 mmL)
	M9; M10; M12; M13; M14
81045SP ... 47SP	2 - 1/2" DR. Bit Holder (Auto Spring) 1/2" (F) x 5/16" (F); 1/2" (F) x 10mm (F)



C41021 102 件 1/2" 套筒及内六角及内六角星旋具头组套
102 pcs 1/2" DR. Socket & Hex & Star Bit Set

PAR D NO.	(g)	📦
C41021	11448	2

Contents:

C545 10 ... 32	18 - 1/2" DR. 6pt. Flank Socket
Size (mm)	10; 11; 12; 13; 14; 15; 16; 17; 18; 19; 20; 21; 22; 23; 24; 27; 30; 32
C54577 14 ... 22	5 - 1/2" DR. 6pt. Flank Deep Socket
Size (mm)	14; 15; 17; 19; 22
C546 10 ... 24	9 - 1/2" DR. Star Socket
	E10; E11; E12; E14; E16; E18; E20; E22; E24
C8044 125 ... 250	2 - Extension Bar 125 - 5" ; 250 - 10"
80249	1 - 1/2" DR. 60 Teeth Ratchet Handle
C80541	1 - 1/2" DR. Universal Joint
C80634	1 - Adaptor for 1/2" DR. Extension 3/8" (F) x 1/2" (M)
C8074 16 ... 20.8	2 - 1/2" DR. Spark Plug Socket
Size (mm)	16; 20.8

C41021

102 件 1/2" 套筒及内六角及内六角星旋具头组套
102 pcs 1/2" DR. Socket & Hex & Star Bit Set

Contents:

15430 04 ... 08	5 - 5/16" DR. Hex Bit (30mmL)
	H4; H5; H6; H7; H8
15470 05 ... 08	4 - 5/16" DR. Hex Bit (70mmL)
	H5; H6; H7; H8
154120 05 ... 08	4 - 5/16" DR. Hex Bit (120mmL)
	H5; H6; H7; H8
154180 05 ... 08	4 - 5/16" DR. Hex Bit (180mmL)
	H5; H6; H7; H8
15630 20 ... 50	7 5/16" DR. Star Bit (30mmL)
	T20; T25; T27; T30; T40; T45; T50
15670 20 ... 50	7 5/16" DR. Star Bit (70mmL)
	T20; T25; T27; T30; T40; T45; T50
156120 40 ... 50	3 - 5/16" DR. Star Bit (120mmL)
	T40; T45; T50
156180 40 ... 50	3 - 5/16" DR. Star Bit (180mmL)
	T40; T45; T50
17430 10 ... 14	3 - 10 mm Hex Bit (30mmL)
	H10; H12; H14
17475 10 ... 14	3 - 10 mm Hex Bit (75 mmL)
	H10; H12; H14
174120 10 ... 14	3 - 10 mm Hex Bit (120 mmL)
	H10; H12; H14
174180 10 ... 14	3 - 10 mm Hex Bit (180 mmL)
	H10; H12; H14
17630 55 ... 70	3 - 10 mm Star Bit (30 mmL)
	T55; T60; T70
17675 55 ... 70	3 - 10 mm Star Bit (75 mmL)
	T55; T60; T70
176120 55 ... 70	3 - 10 mm Star Bit (120mmL)
	T55; T60; T70
176180 55 ... 70	3 - 10 mm Star Bit (180 mmL)
	T55; T60; T70
81045SP ... 47SP	2 - 1/2" DR. Bit Holder (Auto Spring) 1/2" (F) x 5/16" (F); 1/2" (F) x 10 mm (F)



C41051

105 件 1/4"、3/8"、1/2" 多用型
十二槽套筒组套
105 pcs 1/4" & 3/8" & 1/2" DR.
MIT Driver Socket Set

PARD NO.	(g)	☐
41051	9838	2

Contents:

S524 032...13	14 - 1/4" DR. MIT Socket
Size (mm)	3.2; 4; 4.5; 5; 5.5; 6; 7; 8; 9; 10; 11; 12; 13; 14
Size (inch)	1/8; 5/32; 3/16; 7/32; 9/32; 5/16; 11/32; 3/8; 7/16; 15/32; 1/2; 9/16
Star	E4; E5; E6; E7; E8; E10; E11; E12; E14; E16; E18
C8042050...100	2 - 1/4" DR. Extension Bar 50 - 2"; 100 - 4"
80229	1 - 1/4" DR. 60 Teeth Ratchet Handle
C80521	1 - 1/4" DR. Universal Joint
C81225	1 - 1/4" DR. Magnetic Socket Pick-up
C8032115	1 - 1/4" DR. Sliding T Handle
C8143	1 - 1/4" DR. Spinner
C81022	1 - 1/4" DR. Bit Holder 1/4" (F) × 1/4" (F)
C321320 ... 3	4 - 1/4" DR. Phillips Socket Bit PH.0; PH.1; PH.2; PH.3
C322320 ... 3	4 - 1/4" DR. Pozidriv Socket Bit PZ.0; PZ.1; PZ.2; PZ.3
C3233204 ...065	3 - 1/4" DR. Slotted Sockt Bit
Size (mm)	4; 5.5; 6.5
C3243203 ...10	7 - 1/4" DR. Hex Socket Bit
Size (mm)	3; 4; 5; 6; 7; 8; 10
C324321.8 ...3.8	7 - 1/4" DR. Hex Socket Bit
Size (inch)	1/8; 5/32; 3/16; 7/32; 1/4; 5/16; 3/8

C41051

105 件 1/4"、3/8"、1/2" 多用型
十二槽套筒组套
105 pcs 1/4" & 3/8" & 1/2" DR.
MIT Driver Socket Set

Contents:

C3263208 ...40	8 - 1/4" DR. Star Socket Bit
	T8; T10; T15; T20; T25; T27; T30; T40
C534 10 ... 22	Size (mm) 13 - 3/8" DR. MIT Socket
	10; 11; 12; 13; 14; 15; 16; 17; 18; 19; 20; 21; 22
	Size (inch) 3/8; 7/16; 15/32; 1/2; 9/16; 19/32; 5/8; 21/32; 11/16; 3/4; 25/32; 13/16; 7/8
	Star E12; E14; E16; E18; E20; E22; E24; E26; E28
C8043075...250	3 - 3/8" DR. Extension Bar 75 - 3"; 150 - 6"; 250 - 10"
C80531	1 - 3/8" DR. Universal Joint
C807316...20.8	2 - 3/8" DR. Spark Plug Socket
Size (mm)	16; 20.8
C80643	1 - Adaptor for 3/8" DR. Extension 1/2" (F) × 3/8" (M)
80239	1 - 3/8" DR. 60 Teeth Ratchet Handle
C54410 ... 32	22 - 1/2" DR. MIT Socket
Size (mm)	10; 11; 12; 13; 14; 15; 16; 17; 18; 19; 20; 21; 22; 23; 24; 25; 26; 27; 28; 29; 30; 32
	Size (inch) 3/8; 7/16; 15/32; 1/2; 9/16; 19/32; 5/8; 21/32; 11/16; 3/4; 25/32; 13/16; 7/8; 29/32; 15/16; 31/32; 1-1/16; 1-3/32; 1-1/8; 1-3/16; 1-1/4
	Star E12; E14; E16; E18; E20; E22; E24; E26; E28; E30; E32; E34
C8044125...250	2 - 1/2" DR. Extension 125 - 5"; 250 - 10"
80249	1 - 1/2" DR. 60 Teeth Ratchet Handle
C80541	1 - 1/2" DR. Universal Joint
C807416 ...20.8	2 - 1/2" DR. Spark Plug Socket
Size (mm)	16; 20.8
C80634	1 - Adaptor for 1/2" DR. Extension 3/8" (F) × 1/2" (M)



41201

120 件 5/16" 及 10 毫米内六角、内六星、
内十二星、内六槽旋具头组套
120 pcs 5/16" & 10mm DR.
Hex Star Spline Ribe Bit Set

PARD NO.	(g)	☐
41201	10140	2

Contents:

15830 05 ... 08	3 - 5/16" DR. Spline Bit (30mmL) M5; M6; M8
15870 05 ... 08	3 - 5/16" DR. Spline Bit (70mmL) M5; M6; M8
158120 05 ... 08	3 - 5/16" DR. Spline Bit (120mmL) M5; M6; M8
158180 08	1 - 5/16" DR. Spline Bit (180mmL) M8
15930 04 ... 08	5 - 5/16" DR. Ribe Bit (30mmL) M4; M5; M6; M7; M8
15970 05 ... 08	4 - 5/16" DR. Ribe Bit (70 mmL) M5; M6; M7; M8
159120 08	1 - 5/16" DR. Ribe Bit (120 mmL) M8
159180 08	1 - 5/16" DR. Ribe Bit (180 mmL) M8
17830 09 ... 14	4 - 10 mm Spline Bit (30mmL) M9; M10; M12; M14
17875 09 ... 14	4 - 10 mm Spline Bit (75 mmL) M9; M10; M12; M14
178120 09 ... 14	4 - 10 mm Spline Bit (120 mmL) M9; M10; M12; M14
178180 09 ... 14	4 - 10 mm Spline Bit (180 mmL) M9; M10; M12; M14
17930 09 ... 14	5 - 10 mm Ribe Bit (30mmL) M9; M10; M12; M13; M14
17975 09 ... 14	5 - 10 mm Ribe Bit (75mmL) M9; M10; M12; M13; M14
179120 09 ... 14	5 - 10 mm Ribe Bit (120 mmL) M9; M10; M12; M13; M14
179180 09 ... 14	5 - 10mm Ribe Bit (180 mmL) M9; M10; M12; M13; M14

41201

120 件 5/16" 及 10 毫米内六角、内六星、
内十二星、内六槽旋具头组套
120 pcs 5/16" & 10mmDR.
Hex Star Spline Ribe Bit Set

Contents:

15430 04 ... 08	5 - 5/16" DR. Hex Bit (30mmL) H4; H5; H6; H7; H8
15470 05 ... 08	4 - 5/16" DR. Hex Bit (70mmL) H5; H6; H7; H8
154120 05 ... 08	4 - 5/16" DR. Hex Bit (120mmL) H5; H6; H7; H8
154180 05 ... 08	4 - 5/16" DR. Hex Bit (180mmL) H5; H6; H7; H8
15630 20 ... 50	7 5/16" DR. Star Bit (30mmL) T20; T25; T27; T30; T40; T45; T50
15670 20 ... 50	7 5/16" DR. Star Bit (70mmL) T20; T25; T27; T30; T40; T45; T50
156120 40 ... 50	3 - 5/16" DR. Star Bit (120mmL) T40; T45; T50
156180 40 ... 50	3 - 5/16" DR. Star Bit (180mmL) T40; T45; T50
17430 10 ... 14	3 - 10 mm Hex Bit (30mmL) H10; H12; H14
17475 10 ... 14	3 - 10 mm Hex Bit (75 mmL) H10; H12; H14
174120 10 ... 14	3 - 10 mm Hex Bit (120 mmL) H10; H12; H14
174180 10 ... 14	3 - 10 mm Hex Bit (180 mmL) H10; H12; H14
17630 55 ... 70	3 - 10 mm Star Bit (30 mmL) T55; T60; T70
17675 55 ... 70	3 - 10 mm Star Bit (75 mmL) T55; T60; T70
176120 55 ... 70	3 - 10 mm Star Bit (120mmL) T55; T60; T70
176180 55 ... 70	3 - 10 mm Star Bit (180 mmL) T55; T60; T70
81045SP ... 47SP	2 - 1/2" DR. Bit Holder (Auto Spring) 1/2" (F) × 5/16" (F); 1/2" (F) × 10 mm (F)

套筒/旋具头系列 SOCKET / BIT series



C41251 125 件 1/4" 及 1/2" 套筒及旋具头组套
125 pcs 1/4" & 1/2" DR.
Socket & Socket Bit Set

PARD NO.	(g)	
41251	9800	2

Contents:

S525 04 ... 13	12 - 1/4" DR. 6pt. Flank Socket
Size (mm)	4; 4.5; 5; 5.5; 6; 7; 8; 9; 10; 11; 12; 13
S52550 05 ... 13	9 - 1/4" DR. 6pt. Flank Socket
Size (mm)	5; 6; 7; 8; 9; 10; 11; 12; 13
S526 04 ... 10	6 - 1/4" DR. Star Socket
	E4; E5; E6; E7; E8; E10
C8042 050 ... 150	3 - Extension Bar
	50 - 2", 100 - 4", 150 - 6"
80229	1 - 1/4" DR. 60 Teeth Ratchet Handle
C80521	1 - 1/4" DR. Universal Joint
C81225	1 - 1/4" DR. Magnet Socket Pick-up
C8032115	1 - 1/4" DR. Sliding T Handle
C8143	1 - 1/4" DR. Spinner
C545 10 ... 32	18 - 1/2" DR. 6pt. Flank Socket
Size (mm)	10; 11; 12; 13; 14; 15; 16; 17; 18; 19; 20; 21; 22; 23; 24; 27; 30; 32
C54577 14 ... 22	5 - 1/2" DR. 6pt. Flank Deep Socket
Size (mm)	14; 15; 17; 19; 22
C546 10 ... 24	9 - 1/2" DR. Star Socket
	E10; E11; E12; E14; E16; E18; E20; E22; E24
C8044 125 ... 250	2 - Extension Bar 125 - 5"; 250 - 10"
80249	1 - 1/2" DR. 60 Teeth Ratchet Handle
C80541	1 - 1/2" DR. Universal Joint
C80634	1 - Adaptor for 1/2" DR. Extension
	3/8" (F) x 1/2" (M)
C8074 16 ... 20.8	2 - 1/2" DR. Spark Plug Socket
Size (mm)	16; 20.8



C41251 125 件 1/4" 及 1/2" 套筒及旋具头组套
125 pcs 1/4" & 1/2" DR.
Socket & Socket Bit Set

PARD NO.	(g)	
41251	9800	2

Contents:

C32132 0 ... 3	4 - 1/4" DR. Phillips Socket Bit
	PH.0; PH.1, PH.2; PH.3
C32232 0...3	4 - 1/4" DR. Pozidriv Socket Bit
	PZ.0; PZ.1; PZ.2; PZ.3
C323320 04 ... 065	3 - 1/4" DR. Slotted Socket Bit
Size (mm)	4; 5.5; 6.5
C32432 03 ... 10	7 - 1/4" DR. Hex Socket Bit
Size (mm)	3; 4; 5; 6; 7; 8; 10
C32532 10 ... 40	7 - 1/4" DR. Five Sided Tamperproof Socket Bit
	TS10; TS15; TS20; TS25; TS27; TS30; TS40
C32632 08 ... 40	8 - 1/4" DR. Star Socket Bit
	T8; T10; T15; T20; T25; T27; T30; T40
C32732 08 ... 40	8 - 1/4" DR. Star Tamperproof Socket Bit
	T-8H; T-10H; T-15H; T-20H; T-25H; T-27H; T-30H; T-40H
765015L ... 10L	10 - Hex Ball Point Long Key
Size (mm)	1.5; 2; 2.5; 3; 4; 5; 6; 7; 8; 10

C41252 125 件 1/4" 及 1/2" 套筒及旋具头组套
125 pcs 1/4" & 1/2" DR.
Socket & Socket Bit Set

PARD NO.	(g)	
41252	9800	2

Contents:

S525 04 ... 13	12 - 1/4" DR. 6pt. Flank Socket
Size (mm)	4; 4.5; 5; 5.5; 6; 7; 8; 9; 10; 11; 12; 13
S52550 05 ... 13	9 - 1/4" DR. 6pt. Flank Socket
Size (mm)	5; 6; 7; 8; 9; 10; 11; 12; 13
S526 04 ... 10	6 - 1/4" DR. Star Socket
	E4; E5; E6; E7; E8; E10
C8042 050 ... 100	2 - Extension Bar
	50 - 2", 100 - 4"
8111	1 - 1/4" DR. Flexible Inhex Extension
80229	1 - 1/4" DR. 60 Teeth Ratchet Handle
C80521	1 - 1/4" DR. Universal Joint
C81225	1 - 1/4" DR. Magnet Socket Pick-up
C8032115	1 - 1/4" DR. Sliding T Handle
C8143	1 - 1/4" DR. Spinner

C41252 125 件 1/4" 及 1/2" 套筒及旋具头组套
125 pcs 1/4" & 1/2" DR.
Socket & Socket Bit Set

PARD NO.	(g)	
41252	9800	2

Contents:

C32132 0 ... 3	4 - 1/4" DR. Phillips Socket Bit
	PH.0; PH.1, PH.2; PH.3
C32232 0...3	4 - 1/4" DR. Pozidriv Socket Bit
	PZ.0; PZ.1; PZ.2; PZ.3
C323320 04 ... 065	3 - 1/4" DR. Slotted Socket Bit
Size (mm)	4; 5.5; 6.5
C32432 03 ... 10	7 - 1/4" DR. Hex Socket Bit
Size (mm)	3; 4; 5; 6; 7; 8; 10
C32532 10 ... 40	7 - 1/4" DR. Five Sided Tamperproof Socket Bit
	TS10; TS15; TS20; TS25; TS27; TS30; TS40
C32632 08 ... 40	8 - 1/4" DR. Star Socket Bit
	T8; T10; T15; T20; T25; T27; T30; T40
C32732 08 ... 40	8 - 1/4" DR. Star Tamperproof Socket Bit
	T-8H; T-10H; T-15H; T-20H; T-25H; T-27H; T-30H; T-40H
765015L ... 10L	10 - Hex Ball Point Long Key
Size (mm)	1.5; 2; 2.5; 3; 4; 5; 6; 7; 8; 10
C545 10 ... 32	18 - 1/2" DR. 6pt. Flank Socket
Size (mm)	10; 11; 12; 13; 14; 15; 16; 17; 18; 19; 20; 21; 22; 23; 24; 27; 30; 32
C54577 14 ... 22	5 - 1/2" DR. 6pt. Flank Deep Socket
Size (mm)	14; 15; 17; 19; 22
C546 10 ... 24	9 - 1/2" DR. Star Socket
	E10; E11; E12; E14; E16; E18; E20; E22; E24
C8044 125 ... 250	2 - Extension Bar 125 - 5"; 250 - 10"
80249	1 - 1/2" DR. 60 Teeth Ratchet Handle
C80541	1 - 1/2" DR. Universal Joint
C80634	1 - Adaptor for 1/2" DR. Extension
	3/8" (F) x 1/2" (M)
C8074 16 ... 20.8	2 - 1/2" DR. Spark Plug Socket
Size (mm)	16; 20.8



C41421 142 件 1/4" 及 1/2" 套筒组套
142 pcs 1/4" & 1/2" Combination Socket Set

PARD NO.	(g)	Box
C41421	13000	2

Contents: 1/4", 5/16" & 1/2" DR.

S525 04 ... 13	12 - 1/4" DR. 6pt. Flank Socket	
	Size (mm)	4; 4.5; 5; 5.5; 6; 7; 8; 9; 10; 11; 12; 13
S52550 06 ... 13	8 - 1/4" DR. 6pt. Flank Deep Socket	
	Size (mm)	6; 7; 8; 9; 10; 11; 12; 13
S526 04 ... 08	5 - 1/4" DR. Star Socket	
		E4; E5; E6; E7; E8
121300 ... 02	3 - 1/4" Phillips Bit (30mmL)	
		PH.0; PH.1; PH.2
122300 ... 02	3 - 1/4" Pozidriv Bit (30mmL)	
		PZ.0; PZ.1; PZ.2
12330 04 ... 065	3 - 1/4" Slotted Bit (30mmL)	
		0.8×4; 1.0×5.5; 1.2×6.5
12430 03 ... 06	4 - Hex Bit (30mmL)	3; 4; 5; 6
12630 08 ... 40	8 - Star Bit (30mmL)	
		T8; T10; T15; T20; T25; T27; T30; T40
80222	1 - 1/4" DR. 72 Teeth Ratchet Handle	
C81022	1 - 1/4" DR. Bit Holder 1/4" (F)×1/4" (F)	
C8143	1 - 1/4" DR. Spinner	
C8032115	1 - 1/4" DR. Sliding T Handle	
C81225	1 - 1/4" DR. Magnetic Socket Pick-Up	
C80521	1 - 1/4" DR. Universal Joint	
C8042 050 ... 100	2 - 1/4" DR. Extension Bar 2"; 4"	

C41421 142 件 1/4" 及 1/2" 套筒组套
142 pcs 1/4" & 1/2" Combination Socket Set

Contents: 1/4", 5/16" & 1/2" DR.

15130 3 ... 4	2 - 5/16" DR. Phillips Bit (30mmL)	
		PH.3; PH.4
15230 3 ... 4	2 - 5/16" DR. Pozidriv Bit (30mmL)	
		PZ.3; PZ.4
15330 08 ... 12	3 - 5/16" DR. Slotted Bit (30mmL)	
		1.2×8; 1.6×10; 2.0×12
15430 07 ... 14	5 - 5/16" DR. Hex Bit (30mmL)	
		H7; H8; H10; H12; H14
15470 07 ... 14	5 - 5/16" DR. Hex Bit (70mmL)	
		H7; H8; H10; H12; H14
15630 40 ... 60	5 - 5/16" DR. Star Bit (30mmL)	
		T40; T45; T50; T55; T60
15670 40 ... 55	4 - 5/16" Star Bit (70mmL)	
		T40; T45; T50; T55
C7112S	1 - Phillips Screwdriver	PH.2
C7112	1 - Phillips Screwdriver	PH.2
C713065S	1 - Slotted Screwdriver	6.5mm
C713065	1 - Slotted Screwdriver	6.5mm
611160	1 - Combination Pliers	160mm - 6"
610160	1 - Long Nose Pliers	160mm - 6"
613A250	1 - Water pump Pliers	10"
6390300	1 - Engineer Hammer (300g)	
80242	1 - 1/2" DR. 72 Teeth Round Ratchet Handle	
C80541	1 - 1/2" DR. Universal Joint	
C8014380	1 - Swivel Handle	
C80634	1 - Adaptor for 1/2" DR. Extension	
		3/8" (F)×1/2" (M)
C8044 125 ... 250	2 - 1/2" DR. Extension Bar	5"; 10"
C8074 16 ... 20.8	Size (mm)	2 - 1/2" DR. Spark Plug Socket 16; 20.8
C545 10 ... 32	18 - 1/2" DR. 6pt. Flank Socket	
	Size (mm)	10; 11; 12; 13; 14; 15; 16; 17; 18; 19; 20; 21; 22; 23; 24; 27; 30; 32
C54577 14 ... 22	5 - 1/2" DR. 6pt. Flank Deep Socket	
	Size (mm)	14; 15; 17; 19; 22
C546 10 ... 24	9 - 1/2" DR. Star Socket	
		E10; E11; E12; E14; E16; E18; E20; E22; E24
C81045	1 - 1/2" DR. Bit Holder	
C755 08 ... 24	13 - Combination Wrench	
	Size (mm)	8; 10; 11; 12; 13; 14; 15; 16; 17; 18; 19; 22; 24



C41421

PARD NO.

80222	1 - 1/4" 72 Teeth Ratchet Handle
80242	1 - 1/2" 72 Teeth Ratchet Handle



C41421-1

PARD NO.

80221	1 - 1/4" 24 Teeth Ratchet Handle
80241	1 - 1/2" 24 Teeth Ratchet Handle



C41421-3

PARD NO.

80223	1 - 1/4" 72 Teeth Flexible Round Ratchet Handle
80243	1 - 1/2" 72 Teeth Flexible Round Ratchet Handle



C41421-4

PARD NO.

80224	1 - 1/4" 36 Teeth Ratchet Handle
80244	1 - 1/2" 36 Teeth Ratchet Handle



C41421-7

PARD NO.

80221	1 - 1/4" 24 Teeth Ratchet Handle
80247	1 - 1/2" 24 Teeth Thin Ratchet Handle



C41421-9

PARD NO.

80229	1 - 1/4" 60 Teeth Ratchet Handle
80249	1 - 1/2" 60 Teeth Ratchet Handle



C42621 1/2"

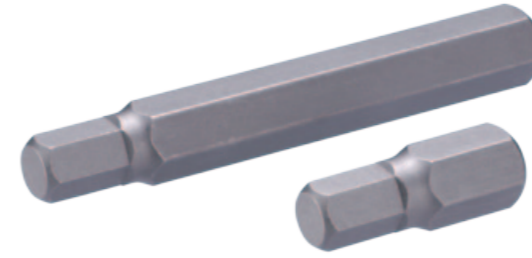
262 件 1/2" 六方套筒及加长六方套筒组套
262 pcs 1/2" DR. 6pt. Socket & Deep Socket Set

PARD NO.	(kg)	
C42621	44.1	1
Contents: 1/2" DR. 6pt. Socket & Deep Socket		
50021	1 - Socket Storage Case	
C545 10 ... 32	131 - 6pt. Flank Socket	
	Size (mm)	10×9pc; 11×9pc; 12×9pc; 13×9pc; 14×9pc; 15×9pc; 16×9pc; 17×8pc; 18×8pc; 19×7pc; 21×7pc; 22×6pc; 23×6pc; 24×6pc; 26×5pc; 27×5pc; 30×5pc; 32×5pc
C54577 10 ... 32	131 - 6pt. Flank Deep Socket	
	Size (mm)	10×9pc; 11×9pc; 12×9pc; 13×9pc; 14×9pc; 15×9pc; 16×9pc; 17×8pc; 18×8pc; 19×7pc; 21×7pc; 22×6pc; 23×6pc; 24×6pc; 26×5pc; 27×5pc; 30×5pc; 32×5pc

C42621-9 1/2"

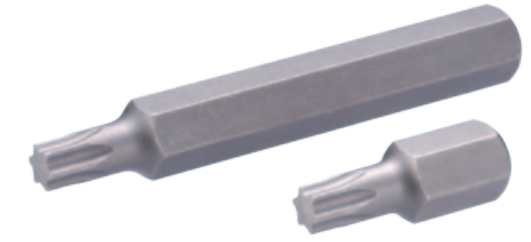
262 件 1/2" 十二星套筒及加长十二星套筒组套
262 pcs 1/2" DR. 12pt. Socket & Deep Socket Set

PARD NO.	(kg)	
C42621-9	44.1	1
Contents: 1/2" DR. 12pt. Socket & Deep Socket		
50021	1 - Socket Storage Case	
C549 10 ... 32	131 - 12pt. Flank Socket	
	Size (mm)	10×9pc; 11×9pc; 12×9pc; 13×9pc; 14×9pc; 15×9pc; 16×9pc; 17×8pc; 18×8pc; 19×7pc; 21×7pc; 22×6pc; 23×6pc; 24×6pc; 26×5pc; 27×5pc; 30×5pc; 32×5pc
C54977 10 ... 32	131 - 12pt. Flank Deep Socket	
	Size (mm)	10×9pc; 11×9pc; 12×9pc; 13×9pc; 14×9pc; 15×9pc; 16×9pc; 17×8pc; 18×8pc; 19×7pc; 21×7pc; 22×6pc; 23×6pc; 24×6pc; 26×5pc; 27×5pc; 30×5pc; 32×5pc



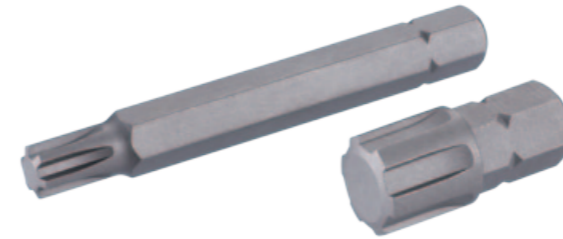
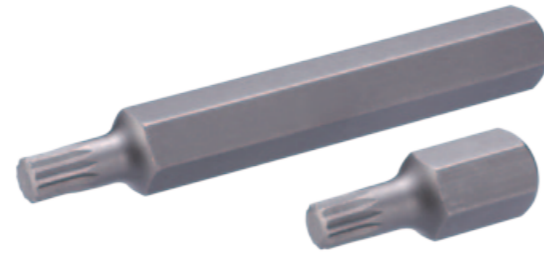
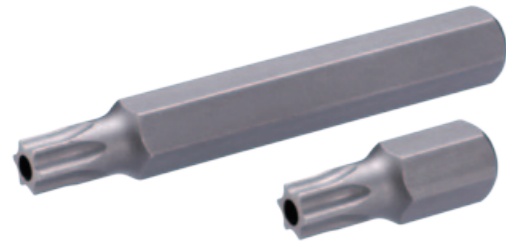
174 10 毫米内六角旋具头
10mm Hex Bit

PARD NO.			(g)	
1743004	4	30	13	10
1743005	5	30	14	10
1743006	6	30	14	10
1743007	7	30	16	10
1743008	8	30	17	10
1743010	10	30	20	10
1743012	12	30	25	10
1743014	14	30	27	10
1747504	4	75	43	10
1747505	5	75	43	10
1747506	6	75	44	10
1747507	7	75	45	10
1747508	8	75	47	10
1747510	10	75	50	10
1747512	12	75	64	10
1747514	14	75	81	10
17412010	10	120	80	10
17412012	12	120	108	10
17412014	14	120	140	10
17418010	10	180	120	10
17418012	12	180	165	10
17418014	14	180	219	10



176 10 毫米内六角星旋具头
10mm Star Bit

PARD NO.			(g)	
1763020	T20	30	13	10
1763025	T25	30	13	10
1763027	T27	30	14	10
1763030	T30	30	14	10
1763040	T40	30	14	10
1763045	T45	30	15	10
1763050	T50	30	16	10
1763055	T55	30	18	10
1763060	T60	30	22	10
1763070	T70	30	24	10
1767520	T20	75	42	10
1767525	T25	75	42	10
1767527	T27	75	42	10
1767530	T30	75	43	10
1767540	T40	75	44	10
1767545	T45	75	45	10
1767550	T50	75	45	10
1767555	T55	75	48	10
1767560	T60	75	62	10
1767570	T70	75	77	10
17612055	T55	120	78	10
17612060	T60	120	104	10
17612070	T70	120	135	10
17618055	T55	180	117	10
17618060	T60	180	162	10
17618070	T70	180	215	10



177 10 毫米带孔内六角旋具头
10mm Star Tamperproof Bit

PARD NO.				
1773020	T-20H	30	14	10
1773025	T-25H	30	14	10
1773027	T-27H	30	14	10
1773030	T-30H	30	14	10
1773040	T-40H	30	14	10
1773045	T-45H	30	16	10
1773050	T-50H	30	16	10
1773055	T-55H	30	18	10
1773060	T-60H	30	22	10
1773070	T-70H	30	24	10
1777520	T-20H	75	42	10
1777525	T-25H	75	42	10
1777527	T-27H	75	42	10
1777530	T-30H	75	42	10
1777540	T-40H	75	44	10
1777545	T-45H	75	44	10
1777550	T-50H	75	46	10
1777555	T-55H	75	48	10
1777560	T-60H	75	66	10

178 10 毫米内十二星旋具头
10mm Spline Bit

PARD NO.				
1783005	M5	30	13	10
1783006	M6	30	14	10
1783008	M8	30	15	10
1783009	M9	30	15	10
1783010	M10	30	17	10
1783012	M12	30	20	10
1783014	M14	30	24	10
1787505	M5	75	43	10
1787506	M6	75	43	10
1787508	M8	75	44	10
1787509	M9	75	46	10
1787510	M10	75	47	10
1787512	M12	75	55	10
1787514	M14	75	72	10
17812009	M9	120	76	10
17812010	M10	120	77	10
17812012	M12	120	91	10
17812014	M14	120	126	10
17818008	M8	180	116	10
17818010	M10	180	117	10
17818012	M12	180	140	10
17818014	M14	180	197	10

179 10 毫米内六槽旋具头
10mm Rib Bit

PARD NO.				
1793004	M4	30	14	10
1793005	M5	30	14	10
1793006	M6	30	14	10
1793007	M7	30	14	10
1793008	M8	30	14	10
1793009	M9	30	16	10
1793010	M10	30	18	10
1793012	M12	30	20	10
1793013	M13	30	23	10
1793014	M14	30	24	10
1793016	M16	30	32	10
1797504	M4	75	42	10
1797505	M5	75	42	10
1797506	M6	75	42	10
1797507	M7	75	42	10
1797508	M8	75	44	10
1797509	M9	75	46	10
1797510	M10	75	47	10
1797512	M12	75	57	10
1797513	M13	75	65	10
1797514	M14	75	72	10
17912009	M9	120	77	10
17912010	M10	120	77	10
17912012	M12	120	97	10
17912013	M13	120	112	10
17912014	M14	120	126	10
17918009	M9	180	115	10
17918010	M10	180	117	10
17918012	M12	180	149	10
17918013	M13	180	173	10
17918014	M14	180	197	10

C340 1/2" 方型旋具套头
1/2" DR. Square Socket Bit

PARD NO.				
C34008	8	35	60	10
C340095	9.5	35	68	10
C34010	10	35	72	10
C340105	10.5	35	78	10
C34012	12	35	90	10
C340127	12.7	35	97	10
C340135	13.5	35	106	10
C34019	19	38	130	10



C341 1/2" 十字旋具套头
1/2" DR. Phillips Socket Bit

PARD NO.				
C341552	PH.2	55	63	10
C341553	PH.3	55	65	10
C341554	PH.4	55	70	10



C344 公制 1/2" 内六角旋具套头
1/2" DR. Hex Socket Bit

PARD NO.	六角	长度	重量 (g)	包装
C34405504	4	55	62	10
C34405505	5	55	64	10
C34405506	6	55	65	10
C34405507	7	55	68	10
C34405508	8	55	69	10
C34405509	9	55	70	10
C34405510	10	55	80	10
C34405512	12	55	103	10
C34406514	14	65	149	10
C34407006	6	70	70	10
C34407017	17	70	196	10
C34407019	19	70	235	10
C34408004	4	80	60	10
C34408005	5	80	70	10
C34408006	6	80	75	10
C34408007	7	80	80	10
C34408008	8	80	89	10
C34408010	10	80	95	10
C34408012	12	80	100	10
C34408014	14	80	105	10
C34408017	17	80	110	10
C34408019	19	80	115	10
C34410005	5	100	78	10
C34410006	6	100	78	10
C34410007	7	100	87	10
C34410008	8	100	88	10
C34410010	10	100	108	10
C34410011	11	100	144	10
C34410012	12	100	145	10
C34410013	13	100	148	10
C34410014	14	100	197	10

C344 公制 1/2" 内六角旋具套头
1/2" DR. Hex Socket Bit

PARD NO.	六角	长度	重量 (g)	包装
C34411005	5	110	85	10
C34411006	6	110	85	10
C34411007	7	110	91	10
C34411008	8	110	93	10
C34411010	10	110	117	10
C34411012	12	110	162	10
C34411014	14	110	207	10
C34411017	17	110	274	10
C34411019	19	110	331	10
C34412008	8	120	100	10
C34413008	8	130	105	10
C34414006	6	140	89	10
C34414008	8	140	104	10
C34414010	10	140	139	10
C34414012	12	140	186	10
C34414014	14	140	245	10
C34416006	6	160	95	10
C34418005	5	180	120	10
C34419008	8	190	130	10
C34422006	6	220	115	10
C34424806	6	248	125	10

C344 英制 1/2" 内六角旋具套头
1/2" DR. Hex Socket Bit

PARD NO.	六角	长度	重量 (g)	包装
C3440555.32	5/32	55	63	10
C3440553.16	3/16	55	63	10
C3440557.32	7/32	55	63	10
C3440551.4	1/4	55	63	10
C3440555.16	5/16	55	69	10
C3440553.8	3/8	55	79	10
C3440557.16	7/16	55	102	10
C3440551.2	1/2	55	112	10
C3440659.16	9/16	65	150	10
C3440655.8	5/8	65	154	10
C3440703.4	3/4	70	242	10

C344 1/2" 内五角旋具套头
1/2" DR. Five Hex Socket Bit

PARD NO.	六角	长度	重量 (g)	包装
C34405510-5	10mm	55	161	10



C346 1/2" 内六角旋具套头
1/2" DR. Star Socket Bit

PARD NO.				
C34605520	T20	55	62	10
C34605525	T25	55	63	10
C34605527	T27	55	63	10
C34605530	T30	55	63	10
C34605540	T40	55	64	10
C34605545	T45	55	67	10
C34605547	T47	55	67	10
C34605550	T50	55	68	10
C34605555	T55	55	79	10
C34605560	T60	55	101	10
C34605570	T70	55	132	10
C34607080	T80	70	185	10
C34608020	T20	80	70	10
C34608025	T25	80	70	10
C34608027	T27	80	71	10
C34608030	T30	80	72	10
C34608040	T40	80	72	10
C34608045	T45	80	82	10
C34608050	T50	80	83	10
C34608055	T55	80	104	10
C34608060	T60	80	142	10
C34610020	T20	100	74	10
C34610025	T25	100	74	10
C34610027	T27	100	75	10
C34610030	T30	100	76	10
C34610040	T40	100	76	10
C34610045	T45	100	86	10
C34610050	T50	100	87	10
C34610055	T55	100	108	10
C34610060	T60	100	146	10
C34610070	T70	100	191	10
C34610080	T80	100	246	10
C34610090	T90	100	299	10
C346100100	T100	100	350	10
C34611050R	T50	110	121	10

C346 1/2" 内六角旋具套头
1/2" DR. Star Socket Bit

PARD NO.				
C34612040	T40	120	90	10
C34612045	T45	120	100	10
C34612070	T70	120	211	10
C34614045	T45	140	241	10
C34614050	T50	140	103	10
C34614055	T55	140	104	10
C34614060	T60	140	138	10
C34614070	T70	140	184	10
C34614090	T90	140	198	10
C346140100	T100	140	233	10
C34620030	T30	200	110	10
C34620040	T40	200	110	10
C34620045	T45	200	135	10
C34620050	T50	200	138	10



C343 1/2" 一字旋具套头
1/2" DR. Slotted Socket Bit

PARD NO.				
C3435508	1.2×8	55	70	10
C3435510	1.6×10	55	70	10
C3435512	2×12	55	102	10
C3435514	2.5×14	55	112	10
C3435516	2.5×16	55	112	10



C347 1/2" DR. Star Tamperproof Socket Bit

PARD NO.				
C34705520	T-20H	55	62	10
C34705525	T-25H	55	62	10
C34705527	T-27H	55	62	10
C34705530	T-30H	55	62	10
C34705540	T-40H	55	64	10
C34705545	T-45H	55	68	10
C34705550	T-50H	55	68	10
C34705555	T-55H	55	78	10
C34705560	T-60H	55	104	10
C34705570	T-70H	55	131	10
C34707080	T-80H	70	139	10
C34708020	T-20H	80	70	10
C34708025	T-25H	80	70	10
C34708027	T-27H	80	70	10
C34708030	T-30H	80	70	10
C34708040	T-40H	80	70	10
C34708045	T-45H	80	79	10
C34708050	T-50H	80	81	10
C34708055	T-55H	80	102	10
C34708060	T-60H	80	137	10
C34710020	T-20H	100	76	10
C34710025	T-25H	100	76	10
C34710027	T-27H	100	76	10
C34710030	T-30H	100	76	10
C34710040	T-40H	100	76	10
C34710045	T-45H	100	85	10
C34710050	T-50H	100	87	10
C34710055	T-55H	100	108	10
C34710060	T-60H	100	143	10
C34710070	T-70H	100	189	10
C34710080	T-80H	100	238	10
C34710090	T-90H	100	196	10
C347100100	T-100H	100	346	10

C347 1/2" 带孔内六角旋具套头
1/2" DR. Star Tamperproof Socket Bit

PARD NO.				
C34710570	T-70H	105	168	10
C34712070	T-70H	120	212	10
C34713030	T-30H	130	85	10
C34714055	T-55H	140	137	10
C34714090	T-90H	140	392	10
C347140100	T-100H	140	461	10



C348T 1/2" 带孔内六角旋具套头
1/2" DR. Spline Tamperproof Socket Bit

PARD NO.				
C34805516T	M16	55	161	10
C34810016T	M16	100	240	10



C348 1/2" 内十二星旋具套头
1/2" DR. Spline Socket Bit

PARD NO.				
C34805505	M5	55	67	10
C34805506	M6	55	67	10
C34805508	M8	55	67	10
C34805509	M9	55	77	10
C34805510	M10	55	78	10
C34805512	M12	55	100	10
C34805514	M14	55	131	10
C34805516	M16	55	162	10
C34808006	M6	80	60	10
C34808008	M8	80	65	10
C34808010	M10	80	70	10
C34808012	M12	80	75	10
C34808518	M18	85	240	10
C34810005	M5	100	80	10
C34810006	M6	100	85	10
C34810008	M8	100	87	10
C34810009	M9	100	95	10
C34810010	M10	100	108	10
C34810012	M12	100	151	10
C34810014	M14	100	187	10
C34810016	M16	100	242	10
C34811010R	M10	110	121	10
C34812008	M8	120	95	10
C34812009	M9	120	121	10
C34812010	M10	120	121	10
C34814008	M8	140	110	10
C34814009	M9	140	140	10
C34814010	M10	140	140	10
C34814012	M12	140	152	10
C34814014	M14	140	256	10



348 1/2" 内十二星旋具头
1/2" DR. Spline Bit

PARD NO.				
3484512	M12	45	69	10
3484514	M14	45	75	10
3484516	M16	45	82	10
3484518	M18	45	83	10
3487512	M12	75	97	10
3487514	M14	75	108	10
3487516	M16	75	127	10
3487518	M18	75	138	10



C349 1/2" 内六槽旋具套头
1/2" DR. Ribbe Socket Bit

PARD NO.				
C34905506	M6	55	70	10
C34910005	M5	100	82	10
C34910006	M6	100	82	10
C34910007	M7	100	82	10
C34910008	M8	100	82	10
C34910009	M9	100	106	10
C34910010	M10	100	122	10
C34910012	M12	100	150	10
C34910013	M13	100	185	10
C34910014	M14	100	18	10
C34910016	M16	100	237	10
C34912009	M9	120	148	10
C34914008	M8	140	102	10
C34914010	M10	140	136	10
C34914012	M12	140	178	10
C34914014	M14	140	286	10
C34924806	M6	248	125	10
C34924807	M7	248	149	10
C34924808	M8	248	150	10

ParD products speak for themselves.



C544 1/2" 多类型十二槽套筒
1/2" DR. 12pt. MIT Socket

PARD NO.	Size (mm)	Size (inch)	Star			
C54410	10	3/8	E12	38	53	10
C54411	11	7/16	E14	38	54	10
C54412	12	15/32		38	55	10
C54413	13	1/2	E16	38	56	10
C54414	14	9/16	E18	38	59	10
C54415	15	19/32		38	63	10
C54416	16	5/8	E20	38	70	10
C54417	17	21/32		38	74	10
C54418	18	11/16	E22	38	75	10
C54419	19	3/4	E24	38	70	10
C54420	20	25/32		38	86	10
C54421	21	13/16	E26	38	95	10
C54422	22	7/8	E28	38	107	10
C54423	23	29/32	E28	40	122	10
C54424	24	15/16	E30	40	135	10
C54425	25	31/32	E32	42	152	10
C54426	26	1	E32	42	173	10
C54427	27	1-1/16	E34	43	151	10
C54428	28	1-3/32	E36	43	186	10
C54429	29	1-1/8	E36	43	196	10
C54430	30	1-3/16	E38	45	193	10
C54432	32	1-1/4	E40	45	225	10



C545 公制 1/2" 六方套筒
1/2" DR. 6pt. Flank Socket

PARD NO.				
C54508	8	38	52	10
C54509	9	38	52	10
C54510	10	38	52	10
C54511	11	38	52	10
C54512	12	38	52	10
C54513	13	38	52	10
C54514	14	38	52	10
C54515	15	38	52	10
C54516	16	38	52	10
C54517	17	38	64	10
C54518	18	38	67	10
C54519	19	38	76	10
C54520	20	38	84	10
C54521	21	38	89	10
C54522	22	38	93	10
C54523	23	40	110	10
C54524	24	40	122	10
C54525	25	42	135	10
C54526	26	42	140	10
C54527	27	43	165	10
C54528	28	43	181	10
C54529	29	43	205	10
C54530	30	45	224	10
C54532	32	45	246	10
C54533	33	46	227	4
C54534	34	46	231	4
C54536	36	46	248	4
C54538	38	50	241	4
C54539	39	50	240	4
C54541	41	53	284	4
C54546	46	58	500	4

A different level of manufacturing quality.



C545 英制 1/2" 六方套筒
1/2" DR. 6pt. Flank Socket

PARD NO.	六角	长度 (mm)	重量 (g)	包装
C5455.16	5/16	38	50	10
C5453.8	3/8	38	53	10
C5457.16	7/16	38	53	10
C54515.32	15/32	38	53	10
C5451.2	1/2	38	54	10
C5459.16	9/16	38	55	10
C54519.32	19/32	38	55	10
C5455.8	5/8	38	60	10
C54511.16	11/16	38	63	10
C5453.4	3/4	38	70	10
C54525.32	25/32	38	79	10
C54513.16	13/16	38	79	10
C5457.8	7/8	38	96	10
C54515.16	15/16	40	109	10
C5451.0	1	42	140	10
C5451.1.16	1-1/16	43	144	10
C5451.1.8	1-1/8	43	147	10
C5451.3.16	1-3/16	45	168	10
C5451.1.4	1-1/4	45	184	10



C546 1/2" 六星套筒
1/2" DR. Star Socket

PARD NO.	六角	长度 (mm)	重量 (g)	包装
C54610	E10	38	83	10
C54611	E11	38	81	10
C54612	E12	38	80	10
C54614	E14	38	75	10
C54616	E16	38	73	10
C54618	E18	38	67	10
C54620	E20	38	73	10
C54622	E22	38	99	10
C54624	E24	40	98	10



C549 公制 1/2" 十二星套筒
1/2" DR. 12pt. Flank Socket

PARD NO.	六角	长度 (mm)	重量 (g)	包装
C54908	8	38	61	10
C54909	9	38	60	10
C54910	10	38	60	10
C54911	11	38	60	10
C54912	12	38	60	10
C54913	13	38	65	10
C54914	14	38	65	10
C54915	15	38	65	10
C54916	16	38	70	10
C54917	17	38	70	10
C54918	18	38	75	10
C54919	19	38	90	10
C54920	20	38	95	10
C54921	21	38	100	10
C54922	22	38	105	10
C54923	23	40	120	10
C54924	24	40	140	10
C54925	25	42	140	10
C54926	26	42	160	10
C54927	27	43	160	10
C54928	28	43	160	10
C54929	29	43	200	10
C54930	30	45	215	10
C54932	32	45	230	10
C54933	33	46	230	4
C54934	34	46	240	4
C54936	36	46	240	4
C54938	38	50	240	4
C54939	39	50	250	4
C54941	41	53	285	4
C54946	46	58	500	4

C549 英制 1/2" 十二星套筒
1/2" DR. 12pt. Flank Socket

PARD NO.	六角	长度 (mm)	重量 (g)	包装
C5495.16	5/16	38	50	10
C5493.8	3/8	38	53	10
C5497.16	7/16	38	53	10
C54915.32	15/32	38	53	10
C5491.2	1/2	38	54	10
C5499.16	9/16	38	55	10
C54919.32	19/32	38	55	10
C5495.8	5/8	38	60	10
C54911.16	11/16	38	63	10
C5493.4	3/4	38	70	10
C54925.32	25/32	38	79	10
C54913.16	13/16	38	79	10
C5497.8	7/8	38	96	10
C54915.16	15/16	40	109	10
C5491.0	1	42	140	10
C5491.1.16	1-1/16	43	144	10
C5491.1.8	1-1/8	43	147	10
C5491.3.16	1-3/16	45	168	10
C5491.1.4	1-1/4	45	184	10

套筒/旋具头系列 SOCKET / BIT series



C54577 公制 1/2" 六方加长套筒 1/2" DR. 6pt. Flank Deep Socket

PARD NO.				
C5457708	8	77	73	10
C5457709	9	77	77	10
C5457710	10	77	79	10
C5457711	11	77	81	10
C5457712	12	77	86	10
C5457713	13	77	94	10
C5457714	14	77	105	10
C5457715	15	77	111	10
C5457716	16	77	122	10
C5457717	17	77	132	10
C5457718	18	77	157	10
C5457719	19	77	163	10
C5457720	20	77	171	10
C5457721	21	77	207	10
C5457722	22	77	220	10
C5457723	23	77	236	10
C5457724	24	77	243	10
C5457725	25	77	254	10
C5457726	26	77	289	10
C5457727	27	77	294	10
C5457728	28	77	317	10
C5457729	29	77	333	10
C5457730	30	77	352	10
C5457732	32	77	420	10
C5457733	33	77	450	10
C5457736	36	77	480	10

C54577 英制 1/2" 六方加长套筒 1/2" DR. 6pt. Flank Deep Socket

PARD NO.				
C545775.16	5/16	77	77	10
C545773.8	3/8	77	79	10
C545777.16	7/16	77	81	10
C545771.2	1/2	77	94	10
C545779.16	9/16	77	105	10
C545775.8	5/8	77	122	10
C5457711.16	11/16	77	132	10
C545773.4	3/4	77	163	10
C5457713.16	13/16	77	207	10
C545777.8	7/8	77	220	10
C5457715.16	15/16	77	243	10
C545771.0	1	77	254	10
C545771.1.16	1-1/16	77	297	10
C545771.1.8	1-1/8	77	333	10
C545771.3.16	1-3/16	77	384	10
C545771.1.4	1-1/4	77	420	10



C54977 公制 1/2" 十二星加长套筒 1/2" DR. 12pt. Flank Deep Socket

PARD NO.				
C5497708	8	77	110	10
C5497709	9	77	115	10
C5497710	10	77	120	10
C5497711	11	77	120	10
C5497712	12	77	125	10
C5497713	13	77	125	10
C5497714	14	77	140	10
C5497715	15	77	140	10
C5497716	16	77	150	10
C5497717	17	77	155	10
C5497718	18	77	190	10
C5497719	19	77	190	10
C5497720	20	77	200	10
C5497721	21	77	220	10
C5497722	22	77	210	10
C5497723	23	77	210	10
C5497724	24	77	210	10
C5497725	25	77	230	10
C5497726	26	77	255	10
C5497727	27	77	305	10
C5497728	28	77	305	10
C5497729	29	77	310	10
C5497730	30	77	320	10
C5497732	32	77	335	10
C5497733	33	77	360	10
C5497734	34	77	403	10
C5497736	36	77	445	10

C54977 英制 1/2" 十二星加长套筒 1/2" DR. 12pt. Flank Deep Socket

PARD NO.				
C549775.16	5/16	77	77	10
C549773.8	3/8	77	79	10
C549777.16	7/16	77	81	10
C5497715.32	15/32	77	90	10
C549771.2	1/2	77	94	10
C549779.16	9/16	77	105	10
C549775.8	5/8	77	122	10
C5497711.16	11/16	77	132	10
C549773.4	3/4	77	163	10
C5497725.32	25/32	77	200	10
C5497713.16	13/16	77	207	10
C549777.8	7/8	77	220	10
C5497715.16	15/16	77	243	10
C549771.0	1	77	254	10
C549771.1.16	1-1/16	77	297	10
C549771.1.8	1-1/8	77	333	10
C549771.3.16	1-3/16	77	384	10
C549771.1.4	1-1/4	77	420	10



C54677 1/2" 六星加长套筒 1/2" DR. Star Deep Socket

PARD NO.				
C5467710	E10	77	53	10
C5467711	E11	77	57	10
C5467712	E12	77	66	10
C5467714	E14	77	78	10
C5467716	E16	77	97	10
C5467718	E18	77	109	10
C5467720	E20	77	120	10
C5467724	E24	77	122	10

RATCHET series

PARD



C8014 1/2" 系列活节手柄
1/2" DR. Swivel Handle

PARD NO.			
C8014380	380-15"	775	30



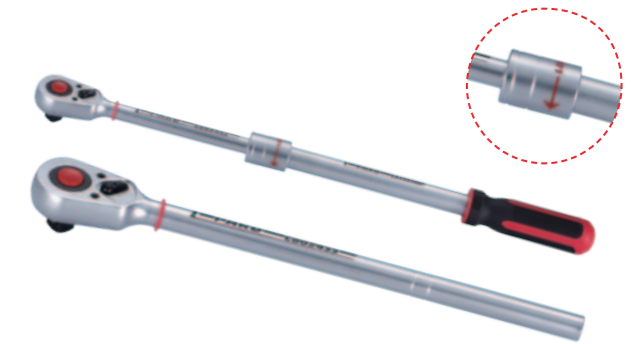
80242 1/2" 系列棘轮扳手 -72 齿
1/2" DR. Round Ratchet Handle -72 Teeth

PARD NO.			
80242	253	488	5



80247 1/2" 系列棘轮扳手 -24 齿
1/2" DR. Ratchet Handle -24 Teeth-Thin

PARD NO.			
80247	255	618	5



802410 1/2" 系列棘轮扳手 -36 齿
1/2" DR. Ratchet Handle -36 Teeth

PARD NO.			
802410	270	754	5

*For C8334300

This item is used with 1/2" Adjustable Handle.



8014 1/2" 系列转向手柄
1/2" DR. Heavy Duty Swivel Handle

PARD NO.			
8014600	600-24"	1220	20



80243 1/2" 系列摇头棘轮扳手 -72 齿
1/2" DR. Flexible Round Ratchet Handle-72 Teeth

PARD NO.			
80243	250	656	5



80248 1/2" 系列棘轮头 -24 齿
1/2" DR. Ratchet Head -24 Teeth

PARD NO.			
80248	225	404	5



802412 1/2" 系列四角棘轮扳手 -24 齿
1/2" DR. Square Hole Ratchet Handle-24 Teeth

PARD NO.			
802412	270	558	5



80241 1/2" 系列棘轮扳手 -24 齿
1/2" DR. Ratchet Handle -24 Teeth

PARD NO.			
80241	270	754	5



80244 1/2" 系列棘轮扳手 -36 齿
1/2" DR. Ratchet Handle -36 Teeth

PARD NO.			
80244	240	636	5



80249 1/2" 系列棘轮扳手 -60 齿
1/2" DR. Ratchet Handle -60 Teeth

PARD NO.			
80249	270	754	5



802413 1/2" 系列棘轮扳手 -36 齿
1/2" Ratchet Handle -36 Teeth

PARD NO.			
802413	245	650	5

RATCHET series

PARD



802414 1/2" 系列旋柄棘轮扳手 -36 齿
1/2" Twist Ratchet Handle - 36 Teeth

PARD NO.			
802414	250	806	5



802418 1/2" 系列摇头棘轮扳手
1/2" DR. Flexible Ratchet Handle

PARD NO.			
802418	290	800	10
802418L	427	1080	10



802426 1/2" 系列旋柄棘轮扳手 -72 齿
1/2" Twist Ratchet Handle - 72 Teeth

PARD NO.			
802426	250	760	5



C8044R 1/2" 细柄驱动延长杆
1/2" DR. Extension - Thin

PARD NO.			
C8044125R	125 - 5"	200	100
C8044250R	250 - 10"	350	80
C8044300R	300 - 12"		



802415 1/2" 系列旋柄棘轮扳手 -72 齿
1/2" Twist Ratchet Handle - 72 Teeth

PARD NO.			
802415	250	806	5



802422 1/2" 系列短柄锁定棘轮扳手
1/2" DR. Stubby Gearless Ratchet Handle

PARD NO.			
802422	270	558	10



C8034 1/2" 滑移头驱动杆
1/2" DR. Sliding T Handle

PARD NO.			
C8034250	250 - 10"	379	10
C8034300	300 - 12"	445	10



C8044W 1/2" 球头驱动延长杆
1/2" DR. Wobble Extension

PARD NO.			
C8044050W	50 - 2"	92	100
C8044125W	125 - 5"	185	100
C8044250W	250 - 10"	350	80



802417 1/2" 系列转向棘轮扳手 -36 齿
1/2" DR. Swivel Ratchet Handle-36 Teeth

PARD NO.			
802417	460 - 18"	900	24
802417L	600 - 24"	1400	12



802425 1/2" 系列旋柄棘轮扳手 -36 齿
1/2" Twist Ratchet Handle - 36 Teeth

PARD NO.			
802425	250	760	5



C8044 1/2" 驱动延长杆
1/2" DR. Extension

PARD NO.			
C8044050	50 - 2"	101	20
C8044125	125 - 5"	183	10
C8044250	250 - 10"	438	10
8044380	380 - 15"	626	10
8044455	455 - 18"	700	5
8044600	600 - 24"	806	5
8044760	760 - 30"	1020	5
8044910	910 - 36"	1300	5



C8044LK 1/2" 带锁定装置驱动延长杆
1/2" DR. Lock Extension Bar

PARD NO.			
C8044075LK	75 - 3"	120	10
C8044125LK	125 - 5"	220	10
C8044250LK	250 - 10"	426	10
C8044300LK	300 - 12"	490	10
C8044380LK	380 - 15"	610	10
C8044460LK	460 - 18"	735	10

套筒/旋具头系列 SOCKET / BIT series



8044P 1/2" 胶套快速驱动延长杆
1/2" DR. Speed Extension

PARD NO.	Length (mm)	Weight (g)	Box Qty
8044250P	250-10"	350	80



C8074 1/2" 火花塞套筒
1/2" DR. Spark Plug Socket

PARD NO.	Size (mm)	Length (mm)	Weight (g)	Box Qty
C807416	16	65	83	10
C807418	18	65	135	10
C807420.8	20.8	65	135	10



C8104 1/2" 旋具头卡头
1/2" DR. Bit Holder

PARD NO.	Size	Length (mm)	Weight (g)	Box Qty
C81042	1/2" (F)×1/4" (F)	38	53	10
C81045	1/2" (F)×5/16" (F)	38	57	10
C81047	1/2" (F)×10mm (F)	38	57	10



8154410 1/2" 金属手柄摇把
1/2" DR. Speed Brace

PARD NO.	Length (mm)	Weight (g)	Box Qty
8154410	412	550	24



C80541 1/2" 万向接头
1/2" DR. Universal Joint

PARD NO.	Length (mm)	Weight (g)	Box Qty
C80541	70	149	10



C8074M 1/2" 磁性火花塞套筒
1/2" DR. Magnetic Spark Plug Socket

PARD NO.	Size (mm)	Length (mm)	Weight (g)	Box Qty
C807416M	16	70	83	10
C807418M	18	70	135	10
C807420.8M	20.8	70	135	10



81045P 1/2" 锁定环型旋具头卡头
1/2" DR. Bit Holder

PARD NO.	Size	Length (mm)	Weight (g)	Box Qty
81045SP	1/2" (F)×5/16" (F)	38	57	10
81047SP	1/2" (F)×10mm (F)	38	57	10



8194QT 1/2" T型四角接头驱动手柄
1/2" DR.Quick-Release T-Handle

PARD NO.	Size	Length (mm)	Weight (g)	Box Qty
8194QT	1/2"	328	1050	10



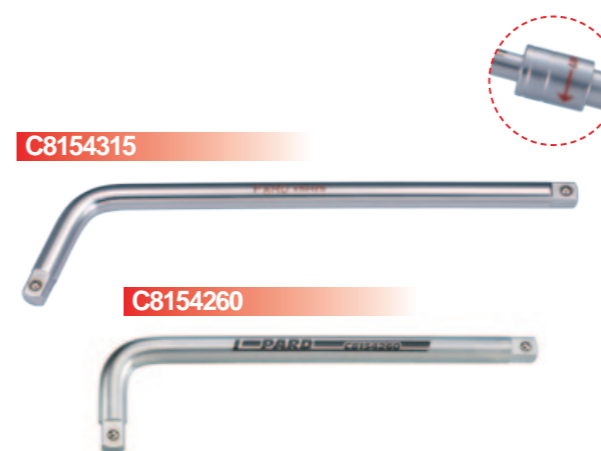
C80634 1/2" 变径转换接头
Adaptor for 1/2" DR. Extension

PARD NO.	Size	Length (mm)	Weight (g)	Box Qty
C80634	3/8" (F)×1/2" (M)	46	70	10



C8094 1/2" 转换接头
1/2" DR. Adaptor

PARD NO.	Size	Length (mm)	Weight (g)	Box Qty
C80943	1/2" (F)×3/8" (M)	65	83	10
C80946	1/2" (F)×3/4" (M)	65	153	10



C8154 1/2" 弯头驱动柄
1/2" DR. L Handle

PARD NO.	Length (mm)	Weight (g)	Box Qty
C8154260	260	241	10
C8154315	315	546	10

*For C8334300
This item is used with 1/2" Adjustable Handle.



C8334300 1/2" 可调节驱动手柄
1/2" DR. Adjustable Handle

PARD NO.	Length (mm)	Weight (g)	Box Qty
C8334300	310	49	10



C6141 公制 14 件 3/4" 六方套筒组套
14 pcs 3/4" Socket Set

C6141S 英制 14 件 3/4" 十二星套筒组套
14 pcs 3/4" Socket Set

C6141-9 公制 14 件 3/4" 十二星套筒组套
14 pcs 3/4" Socket Set

C6211 公制 21 件 3/4" 六方套筒组套
21 pcs 3/4" Socket Set

PARD NO.	(kg)	
C6141	12	2

PARD NO.	(kg)	
C6141S	12	2

PARD NO.	(kg)	
C6141-9	12	2

PARD NO.	(kg)	
C6211	12	2

Contents: 3/4" DR.

C565 22 ... 50	10 - 6pt. Flank Socket
Size (mm)	22; 24; 27; 30; 32; 36; 38; 41; 46; 50
80261	1 - 72 Teeth Ratchet Handle
C8036450	1 - Sliding T Handle 450 - 18"
C8046 100 ... 200	2 - Extension
	100 - 4" ; 200 - 8"

Contents: 3/4" DR.

C569 7.8 ... 2.0	10 - 12pt. Flank Socket
Size (inch)	7/8; 15/16; 1"; 1-1/8; 1-1/4; 1-7/16; 1-1/2; 1-5/8; 1-3/4; 2"
80261	1 - 72 Teeth Ratchet Handle
C8036450	1 - Sliding T Handle 450 - 18"
C8046 100 ... 200	2 - Extension
	100 - 4" ; 200 - 8"

Contents: 3/4" DR.

C569 22 ... 50	10 - 12pt. Flank Socket
Size (mm)	22; 24; 27; 30; 32; 36; 38; 41; 46; 50
80261	1 - 72 Teeth Ratchet Handle
C8036450	1 - Sliding T Handle 450 - 18"
C8046 100 ... 200	2 - Extension
	100 - 4" ; 200 - 8"

Contents: 3/4" DR.

C565 19 ... 50	16 - 6pt. Flank Socket
Size (mm)	19; 21; 22; 23; 24; 26; 27; 29; 30; 32; 35; 36; 38; 41; 46; 50
80261	1 - 72 Teeth Ratchet Handle
C8036450	1 - Sliding T Handle 450 - 18"
C8046 100 ... 400	3 - Extension
	100 - 4" ; 200 - 8" ; 400 - 16"



C6141

PARD NO.	
80261	1 - 3/4" 72 Teeth Ratchet Handle



C6141S

PARD NO.	
80261	1 - 3/4" 72 Teeth Ratchet Handle



C6141-9

PARD NO.	
80261	1 - 3/4" 72 Teeth Ratchet Handle



C6211

PARD NO.	
80261	1 - 3/4" 72 Teeth Ratchet Handle



C6141-2

PARD NO.	
80262	1 - 3/4" 24 Teeth Ratchet Handle



C6141S-2

PARD NO.	
80262	1 - 3/4" 24 Teeth Ratchet Handle



C6141-9-2

PARD NO.	
80262	1 - 3/4" 24 Teeth Ratchet Handle



C6211-2

PARD NO.	
80262	1 - 3/4" 24 Teeth Ratchet Handle



C6211S 英制 21 件 3/4" 十二星套筒组套
21 pcs 3/4" Socket Set

PARD NO.	(kg)	
C6211S	12	2

Contents: 3/4" DR.

C569 7.8 ... 2.0	16 - 12pt. Flank Socket
	Size (inch) 7/8; 15/16; 1"; 1-1/16; 1-1/8; 1-3/16; 1-1/4; 1-5/16; 1-3/8; 1-7/16; 1-1/2; 1-5/8; 1-11/16; 1-3/4; 1-13/16; 1-7/8; 2"
80261	1 - 72 Teeth Ratchet Handle
C8036450	1 - Sliding T Handle 450 - 18"
C8046 100 ... 400	3 - Extension 100 - 4" ; 200 - 8" ; 400 - 16"



C6211S

PARD NO.	
80261	1 - 3/4" 72 Teeth Ratchet Handle



C6211S-2

PARD NO.	
80262	1 - 3/4" 24 Teeth Ratchet Handle

C6211-9 公制 21 件 3/4" 十二星套筒组套
21 pcs 3/4" Socket Set

PARD NO.	(kg)	
C6211-9	12	2

Contents: 3/4" DR.

C569 19 ... 50	16 - 12pt. Flank Socket
	Size (mm) 19; 21; 22; 23; 24; 26; 27; 29; 30; 32; 35; 36; 38; 41; 46; 50
80261	1 - 72 Teeth Ratchet Handle
C8036450	1 - Sliding T Handle 450 - 18"
C8046 100 ... 400	3 - Extension 100 - 4" ; 200 - 8" ; 400 - 16"



C6211-9

PARD NO.	
80261	1 - 3/4" 72 Teeth Ratchet Handle



C6211-9-2

PARD NO.	
80262	1 - 3/4" 24 Teeth Ratchet Handle



C565 3/4" 六方套筒
3/4" DR.6pt. Flank Socket

PARD NO.			(g)	
C56517	17	50	155	8
C56518	18	50	160	8
C56519	19	50	180	8
C56520	20	50	180	8
C56521	21	50	224	8
C56522	22	50	226	8
C56523	23	50	230	8
C56524	24	50	235	8
C56525	25	52	243	8
C56526	26	52	248	8
C56527	27	52	254	8
C56528	28	52	258	8
C56529	29	52	261	8
C56530	30	52	283	6
C56532	32	56	313	6
C56533	33	56	344	6
C56534	34	56	385	6
C56535	35	57	402	6
C56536	36	57	439	4
C56537	37	57	450	4
C56538	38	60	499	4
C56539	39	60	500	4
C56540	40	60	500	4
C56541	41	63	594	4
C56542	42	63	580	4
C56543	43	63	620	4
C56544	44	63	620	4
C56545	45	63	685	4
C56546	46	68	713	4
C56547	47	68	755	4
C56548	48	68	755	4
C56549	49	72	810	1
C56550	50	72	878	1

C565 3/4" 六方套筒
3/4" DR.6pt. Flank Socket

PARD NO.			(g)	
C56551	51	72	895	1
C56552	52	72	905	1
C56553	53	74	975	1
C56554	54	74	900	2
C56555	55	76	994	2
C56556	56	76	1145	1
C56557	57	76	1195	1
C56558	58	78	1225	1
C56559	59	78	1250	1
C56560	60	79	1115	1
C56563	63	83	1280	1
C56565	65	83	1510	1
C56570	70	88	1810	1

套筒/旋具头系列 SOCKET / BIT series



C569 公制 3/4" 十二星套筒
3/4" DR. 12pt. Flank Socket

PARD NO.				
C56919	19	50	176	8
C56921	21	50	179	8
C56922	22	50	222	8
C56923	23	50	227	8
C56924	24	50	230	8
C56925	25	52	238	8
C56926	26	52	249	8
C56927	27	52	249	8
C56928	28	52	259	8
C56929	29	52	268	8
C56930	30	52	280	6
C56932	32	56	290	6
C56933	33	56	294	6
C56934	34	56	330	6
C56935	35	57	350	6
C56936	36	57	394	5
C56938	38	60	420	5
C56941	41	63	481	5
C56942	42	63	590	4
C56946	46	68	677	4
C56948	48	68	775	4
C56950	50	72	814	1
C56955	55	76	949	1
C56960	60	79	1013	1

C569 英制 3/4" 十二星套筒
3/4" DR. 12pt. Flank Socket

PARD NO.				
C5693.4	3/4	50	184	8
C56913.16	13/16	50	202	8
C5697.8	7/8	50	219	8
C56915.16	15/16	50	232	8
C5691.0	1	52	225	8
C5691.1.16	1-1/16	52	231	6
C5691.1.8	1-1/8	52	258	6
C5691.3.16	1-3/16	52	280	6
C5691.1.4	1-1/4	56	304	6
C5691.5.16	1-5/16	56	329	5
C5691.3.8	1-3/8	57	386	5
C5691.7.16	1-7/16	57	424	5
C5691.1.2	1-1/2	60	476	5
C5691.5.8	1-5/8	63	559	5
C5691.11.16	1-11/16	63	633	4
C5691.3.4	1-3/4	68	650	4
C5691.13.16	1-13/16	68	700	4
C5691.7.8	1-7/8	68	730	1
C5692.0	2	72	800	1
C5692.1.8	2-1/8	74	894	1
C5692.3.16	2-3/16	76	901	1
C5692.1.4	2-1/4	76	924	1
C5692.3.8	2-3/8	79	1086	1



364 3/4" 内六角旋具套头
3/4" DR. Hex Socket Bit

PARD NO.				
3647814	14	78	300	5
3647817	17	78	320	5
3647819	19	78	340	5
3647822	22	78	420	5



366 3/4" 内六角星旋具套头
3/4" DR. Star Socket Bit

PARD NO.				
3667860	T60	78	280	5
3667870	T70	78	300	5
3667880	T80	78	320	5
3667890	T90	78	340	5
36678100	T100	78	400	5



368 3/4" 内十二星旋具套头
3/4" DR. Spline Socket Bit

PARD NO.				
3687816	M16	78	320	5
3687818	M18	78	360	5
3687816T	M16T	78	315	5
3687818T	M18T	78	355	5



369 3/4" 内六槽旋具套头
3/4" DR. Ribe Socket Bit

PARD NO.				
3697816	M16	78	320	5
3697818	M18	78	360	5



8016 3/4" 金属柄活节手柄
3/4" DR. Swivel Handle

PARD NO.				
8016530	530-21"	2420	5	
80161000	1000-40"	4000	5	



80261 3/4" 系列棘轮扳手 -72 齿
3/4" DR. Ratchet Handle -72 Teeth

PARD NO.				
80261	500-20"	1970	10	



80262 3/4" 系列重型棘轮扳手 -24 齿
3/4" DR. Ratchet Handle
-24 Teeth

PAR D NO.			
80262	500 - 20"	1970	10



C80561 3/4" 万向接头
3/4" DR. Universal Joint

PAR D NO.			
C80561	109	625	5



C8141-9 14 件 1" 十二星套筒组套
14 pcs 1" DR. 12pt. Socket Set

PAR D NO.		
C8141-9	27.6	1

Contents: 1" DR.

PAR D NO.	Contents
C589 36 ... 80	10 - 12pt. Flank Socket
	Size (mm) 36; 41; 46; 50; 55; 60; 65; 70; 75; 80
80281	1 - 24 Teeth Ratchet Handle
8038550	1 - Sliding T Handle 550 - 22"
C8048 200 ... 400	2 - Extension 200 - 8" ; 400 - 16"



C589 1" 十二星套筒
1" DR. 12pt. Flank Socket

PAR D NO.				
C58936	36	65	468	2
C58938	38	65	495	2
C58941	41	70	601	2
C58946	46	75	862	2
C58950	50	75	1025	2
C58954	54	80	1100	1
C58955	55	80	1205	1
C58958	58	80	1300	1
C58960	60	84	1400	1
C58963	63	87	1620	1
C58965	65	87	1630	1
C58967	67	90	1650	1
C58970	70	93	2050	1
C58971	71	93	2100	1
C58975	75	97	2280	1
C58977	77	103	2300	1
C58980	80	103	2390	1
C58985	85	106	2550	1



C8036 3/4" 滑移驱动杆
3/4" DR. Sliding T Handle

PAR D NO.			
C8036450	450 - 18"	1388	10
C8036500	500 - 20"	1514	10



C8096 3/4" 转换接头
3/4" DR. Adaptor

PAR D NO.	Size			
C80964	3/4"(F)×1/2"(M)		308	5
C80968	3/4"(F)×1"(M)		407	5



C8211-9 21 件 1" 十二星套筒组套
21 pcs 1" DR. 12pt. Socket Set

PAR D NO.		
C8211-9	43.5	1

Contents: 1" DR.

PAR D NO.	Contents
C589 36 ... 80	17 - 12pt. Flank Socket
	Size (mm) 36; 38; 41; 46; 50; 54; 55; 58; 60; 63; 65; 67; 70; 71; 75; 77; 80
80281	1 - 24 Teeth Ratchet Handle
8038550	1 - Sliding T Handle 550 - 22"
C8048 200 ... 400	2 - Extension 200 - 8" ; 400 - 16"



8018 1" 金属活节手柄
1" DR. Swivel Handle

PAR D NO.			
8018530	530 - 21"	3180	5
80181000	1000 - 40"	4540	4



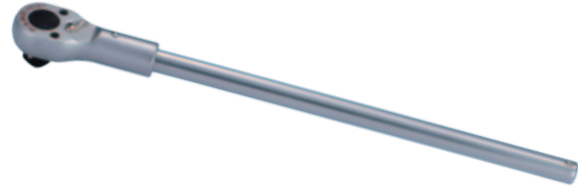
C8046 3/4" 驱动延长杆
3/4" DR. Extension

PAR D NO.			
C8046100	100 - 4"	417	50
C8046200	200 - 8"	740	30
C8046400	400 - 16"	1358	15



8156 3/4" 弯头驱动柄
3/4" DR. L Handle

PAR D NO.			
8156330	330	1500	10
8156450	450	1990	10



80281 1" 重型棘轮扳手 -24 齿
1" Ratchet Handle- 24 Teeth

PARD NO.			
80281	650 - 26"	4424	5



C80581 1" 万向接头
1" DR. Universal Joint

PARD NO.			
C80581	143	1237	2



8038 1" 滑动头驱动杆
1" DR. Sliding T Handle

PARD NO.			
8038550	550-22"	3288	5



C8098 1" 转换接头
1" DR. Adaptor

PARD NO.	Size			
C80986	1"(F)×3/4"(M)	964	964	5



C8048 1" 驱动延长杆
1" DR. Extension

PARD NO.			
C8048200	200 - 8"	1330	2
C8048400	400 - 16"	2290	1



8158 1" 弯头驱动柄
1" DR. L Handle

PARD NO.			
8158650	650	4612	4
