

# 一般手工具系列

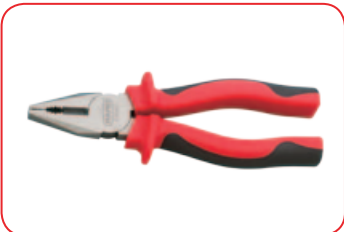
## GENERAL HAND TOOLS

series

深圳市泛亚精密工具贸易部 0755-28198770  
 郑州泛亚精密仪器有限公司 13783573175  
 深圳市奇达精工科技有限公司 0755-28151781  
 总部：中國深圳市龍華新區民治大道540號威華大廈A區607室  
 TEL：86 755 28151781 FAX：86 755 28151702  
 E-mail：fanyaa@fanyaa.com 泛亚：www.fanyaa.com  
 奇达精工：http://www.wiztank.com.cn

**PARD** products speak for themselves.

Pard products turn heads, attract the knowledgeable eye and speak volumes of the brand's commitment to high standards of manufacturing. In fact, we shouldn't really need to be telling you this. If you are reading this, you have probably already been charmed by one of Pard's products. Need we say any more?



# 冲子及凿子系列 PUNCH&CHISEL series

**PARD**



**602** 扁凿  
Chisel

PARD NO.	Size (mm)	Length (mm)	Weight (g)	Contents
60210150	10	150	90	10 / 200
60212150	12	150	92	10 / 200
60215180	15	180	159	10 / 200
60219200	19	200	305	5 / 80
60222200	22	200	327	5 / 80
60225220	25	220	400	5 / 40



**602** 扁凿  
Chisel

PARD NO.	Size (mm)	Length (mm)	Weight (g)	Contents
6021080	10	80	41	20 / 400
6021280	12	80	45	20 / 400
6021580	15	80	47	20 / 400
60219130	19	130	100	10 / 200
60222130	22	130	156	10 / 200
60225130	25	130	191	10 / 100



**604** 顶出冲子  
Pin Punch

PARD NO.	Size (mm)	Length (mm)	Weight (g)	Contents
6042140	2	140	43	10 / 400
6043150	3	150	45	10 / 400
6044190	4	190	88	10 / 200
6045200	5	200	93	10 / 200
6046210	6	210	137	10 / 100
6048215	8	215	154	10 / 100



**604** 顶出冲子  
Pin Punch

PARD NO.	Size (mm)	Length (mm)	Weight (g)	Contents
6043115	3	115	28	20 / 400
6044130	4	130	32	20 / 400
6045130	5	130	37	20 / 400
6046130	6	130	43	20 / 400
6048130	8	130	59	20 / 400
60410130	10	130	78	20 / 200



**50735** 7件凿子组套  
7 pcs Chisel Set

PARD NO.	Weight (g)	Contents
50735	1512	6 / 12

Contents:

60210150... 25220	6 - Chisel
Size (mm)	10; 12; 15; 19; 22; 25
603150	1 - Cape Chisel



**603150** 尖凿  
Cape Chisel

PARD NO.	Length (mm)	Weight (g)	Contents
603150	150	87	10 / 200



**603580** 尖凿  
Cape Chisel

PARD NO.	Size (mm)	Length (mm)	Weight (g)	Contents
603580	5	80	38	20 / 400



**50616** 6件顶出冲子组套  
6 pcs Pin Punch Set

PARD NO.	Weight (g)	Contents
50616	594	6 / 36

Contents:

604 2 140... 8 215	6 - Pin Punch
Size (mm)	2; 3; 4; 5; 6; 8



**50736** 7件顶出冲子组套  
7 pcs Pin Punch Set

PARD NO.	Weight (g)	Contents
50736	730	6 / 24

Contents:

604 3 115... 10 130	6 - Chisel
Size (mm)	3; 4; 5; 6; 8; 10
608190	1 - Punch & Chisel Handle

# 冲子及凿子系列 PUNCH&CHISEL series

**PARO**



**604** 顶出冲子  
Pin Punch

PARO NO.	Size (mm)	Length (mm)	Weight (g)	Packaging
604280	2	80	24	20/400
604390	3	90	25	20/400
604490	4	90	28	20/400
604590	5	90	30	20/400
604690	6	90	34	20/400
604890	8	90	43	20/400



**50737** 7件顶出冲子组套  
7 pcs Pin Punch Set

PARO NO.	Weight (g)	Packaging
50737	640	6/24

Contents:

604 280... 890	6 - Pin Punch
Size (mm)	2; 3; 4; 5; 6; 8
608190	1 - Punch & Chisel Handle



**605** 中心冲子  
Center Punch

PARO NO.	Size (mm)	Length (mm)	Weight (g)	Packaging
6054185	4	185	102	10/200



**50511** 5件冲子及凿子组套  
5 pcs Punch & Chisel Set

PARO NO.	Weight (g)	Packaging
50511	490	6/24

Contents:

60212150	1 - Chisel	12mm
603150	1 - Cape Chisel	150mm
6044190	1 - Pin Punch	4mm
6054185	1 - Center Punch	4mm
6064185	1 - Taper Punch	4mm



**605** 中心冲子  
Center Punch

PARO NO.	Size (mm)	Length (mm)	Weight (g)	Packaging
605480	4	80	36	20/400



**605** 自动中心冲子  
Auto Center Punch

PARO NO.	Size (mm)	Length (mm)	Weight (g)	Packaging
6054130	4	130	81	20/200



**605** 带驱动螺丝的开孔器  
Screw Hole Punch

PARO NO.	Size (mm)	Weight (g)	Packaging
60532	32	290	10/60

**Cutting capacity**  
Steel Sheet: Up to 2mm in thickness  
Aluminum sheet: Up to 5mm in thickness



**606** 圆锥冲子  
Taper Punch

PARO NO.	Size (mm)	Length (mm)	Weight (g)	Packaging
606180	1	80	33	20/400
606280	2	80	34	20/400
606380	3	80	35	20/400
606480	4	80	36	20/400
606580	5	80	37	20/400
606680	6	80	39	20/400



**50738** 7件圆锥冲子组套  
7 pcs Taper Punch Set

PARO NO.	Weight (g)	Packaging
50738	670	6/24

Contents:

606 180... 680	6 - Taper Punch
Size (mm)	1; 2; 3; 4; 5; 6
608190	1 - Punch & Chisel Handle

# 冲子及凿子系列 PUNCH&CHISEL series

**PARD**



## 606 圆锥冲子 Taper Punch

PARD NO.	Size (mm)	H (mm)	(g)	10/200
6062185	2	185	100	10/200
6063185	3	185	101	10/200
6064185	4	185	103	10/200

## 50739 7件冲子及凿子组套 7 pcs Chisel & Center Punch Set

PARD NO.	(g)	6/24
50739	700	6/24

Contents:

602 10 80... 15 80	3 - Chisel
	Size (mm) 10; 12; 15;
603580	1 - Cape Chisel
6071080	1 - Point Chisel 0mm
605480	1 - Center Punch 4mm
608190	1 - Punch & Chisel Handle

## 5162 16件冲子及凿子组套 16 pcs Punch & Chisel Set

PARD NO.	(kg)	10
5162	2.17	10

Contents:

60210150 ... 22200	5 - Chisel
	Size (mm) 10; 12; 15; 19; 22
603150	1 - Cape Chisel
6042140 ... 8215	6 - Pin Punch
	Size (mm) 2; 3; 4; 5; 6; 8
6054185	1 - Center Punch 4mm
6062185 ... 4185	3 - Taper Punch
	Size (mm) 2; 3; 4

## 5281 28件冲子及凿子组套 28 pcs Punch & Chisel Set

PARD NO.	(kg)	6
5281	3.55	6

Contents:

604280 ... 890	6 - Pin Punch (90mmL)
	Size (mm) 2; 3; 4; 5; 6; 8
6043115 ... 10130	6 - Pin Punch (130 mmL)
	Size (mm) 3; 4; 5; 6; 8; 10
6021080 ... 1580	3 - Chisel (80 mmL)
	Size (mm) 10; 12; 15
60219130 ... 25130	3 - Chisel (130 mmL)
	Size (mm) 19; 22; 25
606180 ... 680	6 - Tape Punch (80 mmL)
	Size (mm) 1; 2; 3; 4; 5; 6
603580	1 - Cape Chisel (80mmL)
605480	1 - Center Punch (80mmL)
	Size (mm) 4 mm
6071080	1 - Point Chisel (80 mmL)
	Size (mm) 10 mm
608190	1 - Punch & Chisel Handle



## 607 尖凿 Point Chisel

PARD NO.	Size (mm)	H (mm)	(g)	20/400
6071080	10	80	38	20/400



## 51010 10件冲子及凿子组套 10 pcs Chisel & Center Punch Set

PARD NO.	(g)	10/20
51010	1140	10/20

Contents:

602 10 80... 25 130	6 - Chisel
	Size (mm) 10; 12; 15; 19; 22; 25
603580	1 - Cape Chisel
6071080	1 - Point Chisel 10mm
605480	1 - Center Punch 4mm
608190	1 - Punch & Chisel Handle



## 608 冲子及凿子握把 Punch & Chisel Handle

PARD NO.	(mm)	(g)	5/40
608190	190	448	5/40

# 钳子系列 PLIERS series

**PARO**



**609SO** 直头轴用卡簧钳  
Snap Ring Pliers (Open)

PARD NO.	Capacity		(g)	
60905SO	8-25 mm	140-5"	160	10/200
60907SO	19-60 mm	180-7"	300	10/100
60909SO	40-100mm	245-9.8"	333	10/60
60912SO	85-140mm	300-12"	500	6/48



**609BO** 弯头轴用卡簧钳  
Snap Ring Pliers (Open)

PARD NO.	Capacity		(g)	
60905BO	8-25 mm	140-5"	160	10/200
60907BO	19-60 mm	180-7"	300	10/100
60909BO	40-100mm	235-9.4"	333	10/60
60912BO	85-140mm	300-12"	500	6/48



**610B** 弯头尖嘴钳  
Bent Long Nose Pliers

PARD NO.		(g)	
610160B	160-6.3"	186	10/120
610200B	200-8"	220	10/100



**M610** 袖珍扁嘴钳  
Mini Nose Pliers, Flat

PARD NO.		(g)	
M610150F	150-6"	99	10/120



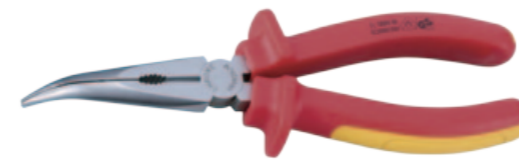
**609SC** 直头孔用卡簧钳  
Snap Ring Pliers (Close)

PARD NO.	Capacity		(g)	
60905SC	8-25 mm	140-5"	160	10/200
60907SC	19-60 mm	180-7"	300	10/100
60909SC	40-100mm	245-9.8"	333	10/60
60912SC	85-140mm	300-12"	500	6/48



**609BC** 弯头孔用卡簧钳  
Snap Ring Pliers (Close)

PARD NO.	Capacity		(g)	
60905BC	8-25 mm	135-5.2"	160	10/200
60907BC	19-60 mm	170-6.8"	300	10/100
60909BC	40-100mm	235-9.4"	333	10/60
60912BC	85-140mm	300-12"	500	6/48



**610BN** 绝缘弯头尖嘴钳  
△1000V Insulated  
Bent Long Nose Pliers

PARD NO.		(g)	
610160BN	160-6.3"	186	10/120
610200BN	200-8"	220	10/100



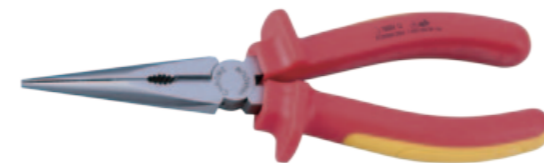
**M610** 袖珍尖嘴钳(半圆口)  
Mini Long Nose Pliers Sim  
Semiround

PARD NO.		(g)	
M610150S	150-6"	99	10/120



**610** 尖嘴钳  
Long Nose Pliers

PARD NO.		(g)	
610160	160-6.3"	156	10/120
610200	200-8"	220	10/100



**610N** 绝缘尖嘴钳  
△1000V Insulated  
Long Nose Pliers

PARD NO.		(g)	
610160N	160-6.3"	186	10/120
610200N	200-8"	220	10/100



**M610** 袖珍尖嘴钳(半圆口)  
Mini Long Nose Pliers Semiround

PARD NO.		(g)	
M610150	150-6"	99	10/120



**M610** 袖珍弯头尖嘴钳(半圆口)  
Mini Bent Long Nose Pliers  
Sim Semiround

PARD NO.		(g)	
M610150B	150-6"	93	10/120

# 钳子系列 PLIERS series

**PARD**



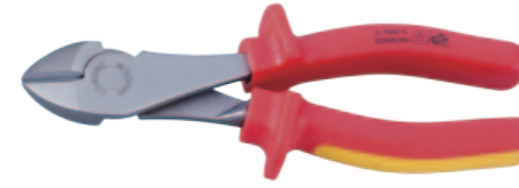
**611** 虎钳  
Combination Pliers

PARD NO.		(g)	
611160	160 - 6.3"	261	10 / 120
611180	180 - 7"	280	10 / 80
611200	200 - 8"	380	10 / 60



**612** 偏口钳  
Diagonal Pliers

PARD NO.		(g)	
612160	160 - 6.3"	238	10 / 120



**612N** 强力绝缘偏口钳  
△ 1000V Insulated  
Heavy Duty Diagonal Pliers

PARD NO.		(g)	
612180N	180 - 7"	260	10 / 80
612200N	200 - 8"	380	10 / 60



**M626** 袖珍顶切钳  
Mini End Cutting Nippers

PARD NO.		(g)	
M626125	125 - 5"	90	10 / 120



**611N** 绝缘虎钳  
△ 1000V Insulated  
Combination Pliers

PARD NO.		(g)	
611160N	160 - 6.3"	225	10 / 120
611180N	180 - 7"	280	10 / 80
611200N	200 - 8"	380	10 / 60



**612** 强力偏口钳  
Heavy Duty Diagonal Pliers

PARD NO.		(g)	
612180	180 - 7"	250	10 / 80
612200	200 - 8"	380	10 / 60



**M612** 袖珍偏口钳  
Mini Cutting Nippers

PARD NO.		(g)	
M612150	150 - 6"	80	10 / 200



**613** 槽式滑轨水口钳  
Waterpump Pliers

PARD NO.		(g)	
613125	125 - 5"	120	10 / 120
613150	150 - 6"	175	10 / 120
613200	200 - 8"	225	10 / 80
613250	250 - 10"	470	10 / 60
613300	300 - 12"	680	6 / 24
613410	410 - 16"	1300	6 / 12



**M611** 袖珍虎钳  
Mini Combination Pliers

PARD NO.		(g)	
M611125	125 - 5"	125	10 / 120



**612N** 绝缘偏口钳  
△ 1000V Insulated  
Diagonal Pliers

PARD NO.		(g)	
612160N	160 - 6.3"	240	10 / 120



**M612** 袖珍尖头型偏口钳  
Mini Angled Blades Cutter

PARD NO.		(g)	
M612150A	150 - 6"	80	10 / 120



**613A** 双滑轨水口钳  
Waterpump Pliers

PARD NO.		(g)	
613A180	180 - 7"	300	10 / 100
613A250	250 - 10"	340	10 / 60
613A300	300 - 12"	480	10 / 40

# 钳子系列 PLIERS series

**PARD**



**613B** 可换头式水口钳  
Radiator Hose Pliers

PARD NO.	Length	Opening	Weight (g)	Box Qty
613B250	10"	19-66mm	310	10/40



**613C** 可换头式水口钳  
Radiator Hose Pliers

PARD NO.	Length	Opening	Weight (g)	Box Qty
613C250	10"	19-66mm	312	10/40



**614** 管口大力钳  
Curve Jaw Locking Pliers

PARD NO.	Length	Weight (g)	Box Qty
614125	125-5"	190	10/100
614175	175-7"	342	8/64
614250	250-10"	555	5/40



**614A** 自动锁紧水口钳  
Auto Adjusting Pliers

PARD NO.	Length	Opening	Weight (g)	Box Qty
614A180	180-7"	0-26 mm / 0-1"	198	6/72
614A225	225-9"	0-38 mm / 0-1-1/2"	450	6/48



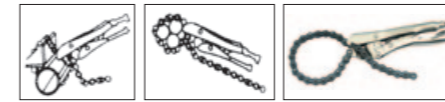
**614B** 弧口大力钳  
V Jaw Locking Pliers

PARD NO.	Length	Weight (g)	Box Qty
614B175	175-7"	342	8/64
614B250	250-10"	555	5/40



**614C** 曲口大力钳  
Universal Jaw Locking Pliers

PARD NO.	Length	Weight (g)	Box Qty
614C250	250-10"	555	5/40



**614D** 链式大力钳  
Locking Chain Clamp

PARD NO.	Length	Weight (g)	Box Qty
614D480	480"	715	6/36



**614F** 圆口大力钳 (安全锁扣)  
Locking Pliers W/Swivel Shackle

PARD NO.	Length	Weight (g)	Box Qty
614F266	266mm - 10-1/2"	652	6/36



**615** 尖嘴大力钳  
Long Nose Locking Pliers

PARD NO.	Length	Weight (g)	Box Qty
615150	150-6"	190	10/100
615225	225-9"	390	10/60



**615B** 弯嘴固定大力钳  
Parrot Pliers With Sawteeth

PARD NO.	Length	Weight (g)	Box Qty
615B215	215-8.5"	405	10/60



**616** 吸震锤  
Rubber Hammer

PARD NO.	Head Size	Length	Weight (g)	Box Qty
61638	38°	290mm	520	6/36
61646	46°	310mm	690	6/36
61650	50°	340mm	940	6/24
61656	56°	356mm	1170	6/24
61660	60°	370mm	1400	6/18



**616R** 吸震锤 (可换锤头)  
Rubber Hammer

PARD NO.	Head Size	Length	Weight (g)	Box Qty
616R25	25°	280mm	345	12/48
616R30	30°	285mm	480	12/48
616R35	35°	290mm	590	12/48
616R40	40°	300mm	850	6/24
616R45	45°	305mm	990	6/24
616R50	50°	315mm	1110	6/24
616R55	55°	320mm	1290	6/18
616R60	60°	325mm	1670	6/18

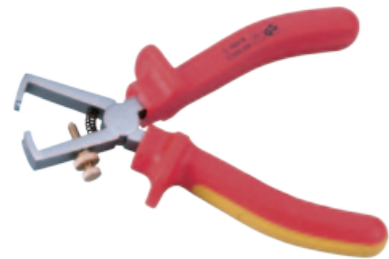
# 钳子系列 PLIERS series

**PARD**



**617180** 剥线钳  
Wire Stripper Pliers

PARD NO.	Size (mm)	Weight (g)	Packaging
617180	180-7"	233	8/96



**617160N** 绝缘剥线钳  
1000V Insulated Wire Stripper Pliers

PARD NO.	Size (mm)	Weight (g)	Packaging
617160N	160-6.3"	233	8/96



**61701** 多功能探测镜  
Pick-up Magnetic LED Light

PARD NO.	Size (mm)	Weight (g)	Packaging
61701	235	82	10/120

- Magnetic pick-up tool in telescopic extended, maximum 63cm extension.
- Take off the cap of bottom. The needle point head can be used for marking when draw a line or clean the narrow slot and small hole.
- Attach a fully adjustable mirror for inspection.
- All in one handy tool with pocket clip.



**618** 盒尺  
Measuring Tape

PARD NO.	Size	Weight (g)	Packaging
61803	3 m	78	10/100
61805	5 m	180	10/100
61808	8 m	270	10/60



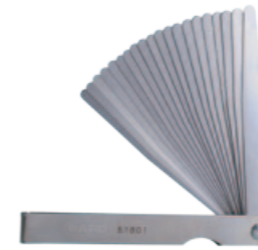
**618** 不锈钢直尺  
Stainless Steel Straight Ruler

PARD NO.	Size (mm)	Weight (g)	Packaging
61830	30 cm	60	12/240
61850	50 cm	150	12/120



**618** 不锈钢游标卡尺  
Stainless Steel Vernier Caliper

PARD NO.	Size (mm)	Measurement Accuracy	Weight (g)	Packaging
618150	150-6"	+/-0.05mm	160	10/100
618200-8	200-8"	+/-0.05mm	383	10/60



**61801** 20片塞尺  
20 pcs Feeler Gauge

PARD NO.	Size (mm)	Weight (g)	Packaging
61801	0.05-1.00 mm	88	20/120

- Including:  
Size (mm) 0.05; 0.1; 0.15; 0.2; 0.25; 0.3; 0.35; 0.4; 0.45; 0.5; 0.55; 0.6; 0.65; 0.7; 0.75; 0.8; 0.85; 0.9; 0.95; 1.00

**61802** 26片公英制塞尺  
26 pcs Feeler Gauge - SAE & MM

PARD NO.	Size (mm) / Size (inch)	Weight (g)	Packaging
61802	0.04-0.63mm / 0.0015"-0.025"	140	20/120

- Including:  
Size (mm / inch) 0.04 / 0.0015"; 0.05 / 0.002"; 0.06 / 0.0025"; 0.08 / 0.003"; 0.1 / 0.004"; 0.13 / 0.005"; 0.15 / 0.18"; 0.18 / 0.007"; 0.2 / 0.008"; 0.23 / 0.009"; 0.25 / 0.011"; 0.28 / 0.011"; 0.3 / 0.012"; 0.33 / 0.013; 0.35 / 0.014; 0.38 / 0.015; 0.4 / 0.013"; 0.43 / 0.017"; 0.45 / 0.018"; 0.48 / 0.019"; 0.5 / 0.02"; 0.53 / 0.021"; 0.55 / 0.022"; 0.58 / 0.023"; 0.6 / 0.024"; 0.63 / 0.025"



**618200** 角度规  
Stainless Steel Protractor

PARD NO.	Size (mm)	Weight (g)	Packaging
618200	200-8"	52	20/200



**61804S** 公制螺距规  
Screw Pitch Gauges - SAE

PARD NO.	Size (mm)	Weight (g)	Packaging
61804S	105mm	104	20/200

Size Screw Pitch: 4-62 SAE

**61804M** 英制螺距规  
Screw Pitch Gauges - MM

PARD NO.	Size (mm)	Weight (g)	Packaging
61804M	105mm	104	20/200

Size Screw Pitch: 0.25-6 mm



**618220** 划线器  
Steel Scriber

PARD NO.	Size (mm)	Weight (g)	Packaging
618220	220-9"	18	12/240



# 钳子系列 PLIERS series

**PARD**



**619** 绞线钳  
Wire Twister Pliers

PARD NO.	H (mm)	(g)	Icon
619215	215	230	10/80
619270	270	380	10/60



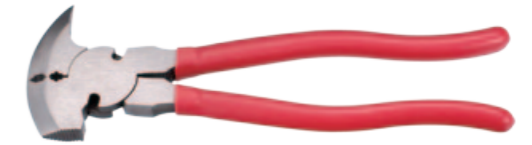
**621** 加长半圆头钳  
Long Nose Straight Long Pliers

PARD NO.	H	(g)	Icon
621280	280-11"	330	10/60



**624** 加长火花塞钳  
Extra Long Nose Spark Plug Pliers

PARD NO.	H	(g)	Icon
624280	280-11"	330	10/60



**627** 篱笆钳  
Fencing Pliers

PARD NO.	H	(g)	Icon
62710	250-10"	680	6/24



**619R** 绞线钳  
Reversible Wire Twister Pliers

PARD NO.	H (mm)	(g)	Icon
619215R	235	338	10/60
619270R	285	460	10/40



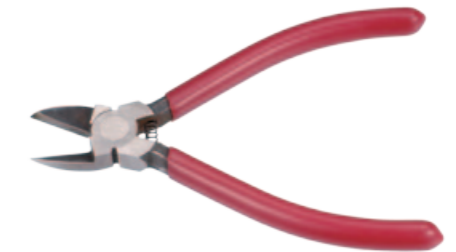
**622** 加长 45° 弯头钳  
Long Nose 45° Long Pliers

PARD NO.	H	(g)	Icon
622280	280-11"	330	10/60



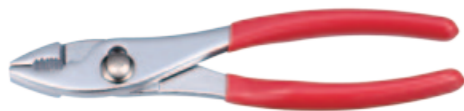
**625** 胡桃钳  
Carpenter Pincer

PARD NO.	H	(g)	Icon
62507	180-7"	315	12/72
62508	200-8"	420	6/60



**628** 塑料钳  
Plastic Pliers

PARD NO.	H	(g)	Icon
62805	125-5"	89	10/120
62806	150-6"	132	10/120
62807	180-7"	170	10/120



**620** 汽车维修钳  
Slip Joint Pliers

PARD NO.	H	(g)	Icon
62006	160-6.3"	238	12/72
62008	215-8.5"	275	12/72
62010	250-10"	340	12/72



**623** 加长 90° 弯头钳  
Long Nose 90° Long Pliers

PARD NO.	H	(g)	Icon
623280	280-11"	330	10/60



**626** 重力顶切钳  
Rabbit Pincer

PARD NO.	H	(g)	Icon
62610	250-10"	680	6/24

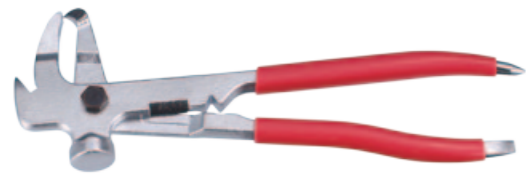


**629** 管钳  
Pipe Wrench

PARD NO.	H	(g)	Icon
62901	1"	790	6/24
629015	1.5"	1450	6/12
62902	2"	2350	6/12

# 钳子及 配件系列

## PLIERS & ACCESSORIES series



**630** 轮胎平衡钳锤  
Wheel Weight Balance Pliers

PARD NO.			
63010	250 - 10"	450	6/48



**631** 钳式滤清器扳手  
Oil Filter Wrench

PARD NO.				
6316090	60 - 90 mm	250 - 10"	354	6/72
63185115	85 - 115 mm	300 - 12"	370	6/72
631100140	100 - 140 mm	355 - 14"	500	6/36



**631** 钳式滤清器扳手  
Oil Filter Master Pliers

PARD NO.				
63153118	53 - 118mm	250 - 10"	458	12/48



**632** 外螺纹修复器  
External Thread Restorer Files (mm)

PARD NO.		
632011	208	12/72

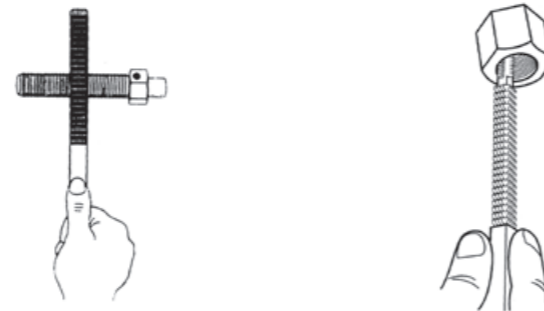
Metric file / pitch size: 0.8 / 1.00 / 1.25 / 1.5 / 1.75 / 2.00 / 2.50 / 3.00

**632** 外螺纹修复器  
External Thread Restorer Files (SAE)

PARD NO.		
632012	208	12/72

SAE file / pitch size: 10 / 11 / 12 / 14 / 16 / 18 / 20 / 24

\*Restore tool for renewing damaged thread on any diameter bolt, stud, axle or shaft file, both right and left hand threads.



**632** T型丝锥扳手组套 (棘轮式)  
T Tap Wrench (Ratchet Type)

PARD NO.		
632014	1100	24



**632** 4件螺母分割器组套  
4 pcs Nut Splitter Set

PARD NO.		
632041	1584	12

Contents:

	Size (inch)	Size (mm)
6320812	5/16 to 1/2	8 - 12
6321216	1/2 to 5/8	12 - 16
6321622	5/8 to 7/8	16 - 22
6322227	7/8 to 1-1/8	22 - 27



**632** 5件断螺栓取出器组套  
5 pcs Screw Extractor Set

PARD NO.		
632051	134	10 / 100

Contents:

7/64; 9/64; 5/32; 1/4; 19/64



**632** 8件断螺栓取出器组套  
8 pcs Screw Extractor Set

PARD NO.		
632081	830	6/24

Contents:

1/8; 1/4; 5/16; 7/16; 9/16; 3/4; 1; 1.1/8



**632** 8件断螺栓取出器组套  
8 pcs Screw Extractor Set

PARD NO.		
632082	830	6/24

Contents:

1/8; 1/4; 5/16; 7/16; 9/16; 3/4; 1; 1.1/8



**632** 螺纹修理器组套  
Axle Spindle Rethreading Set

PARD NO.		
632083	583	36

Contents:

M24×1.50; M24×2.00; M22×1.00; M22×1.50;  
M20×1.50; M20×1.25; 3/4" ×20UNEF;  
13/16"×20UNEF

\*8 pcs thread restoring die set is used to clean or repair axle threads on spindles.

\* Use with 1-1/4" socket or wrench.

# 钳子系列 PLIERS series



**633** 切割大力钳  
Pinch-Off Pliers

PARD NO.			
633175	175 - 7"	368	8 / 64



**635** 卡箍大力钳  
Hose - Clamp Pliers

PARD NO.			
635150	150 - 6"	245	12 / 96
635230	230 - 9"	425	6 / 48



**637** 绝缘电缆钳  
△ 1000V Insulated Cable Cutter

PARD NO.			
63706	160 - 6"	180	10 / 120
63708	200 - 8"	300	10 / 60



**639** 钳工锤  
Engineer Hammer

PARD NO.	H.W(g)		
6390300	300	300	6 / 48
6390500	500	500	6 / 36
6390800	800	800	6 / 24
6391000	1000	1000	8 / 16
6391500	1500	1500	6 / 12
6392000	2000	2000	6 / 12



**633** 切割大力钳  
Locking Hose Pinch-Off Pliers

PARD NO.			
633A250	250 - 10"	515	6 / 36



**636245A**



**63710** 绝缘电缆钳  
△ 1000V Insulated Cable Cutter

PARD NO.			
63710	250 - 10"	540	10 / 60



**640** 球头工程锤  
Ball Pein Hammer

PARD NO.	H.W(oz)		
64008	8oz	360	6 / 48
64012	12oz	458	6 / 48
64016	16oz	528	6 / 36
64024	24oz	970	6 / 24
64032	32oz	1180	6 / 24
64040	40oz	1350	6 / 12



**634** 长嘴切割大力钳  
Pinch-Off Locking Pliers

PARD NO.			
634280	280 - 11"	635	6 / 48

**636245B**



**636** 软管卡箍钳  
Hose Clamp Pliers

PARD NO.	Size (mm)			
636245A	Max 38	245mm (9-1/2")	320	12 / 72
636245B	Max 22-55	245mm (9-1/2")	336	12 / 72



**638** 石匠锤  
Sledge Hammer

PARD NO.	H.W(oz)	
6381000	1000	6 / 24
6381250	1250	8 / 16
6381500	1500	6 / 12
6382000	2000	4 / 8



**641** 铆钉锤  
Riveting Hammer

PARD NO.	Size		
641028	28mm	450	6 / 48
641030	30mm	550	6 / 48
641035	35mm	810	6 / 24
641040	40mm	1065	6 / 24
641045	45mm	1570	8 / 16
641050	50mm	1975	4 / 16

# 扭力扳手系列 TORQUE WRENCH

series



**642** 可调式钩型扳手  
Adjustable Hook Wrench  
(Fixed Type)

PARD NO.	Capacity	(g)	
6421335	13 - 35 mm	94	10 / 200
6423550	35 - 50 mm	186	10 / 120
6425080	50 - 80 mm	382	10 / 60
64280120	80 - 120 mm	642	6 / 36
642120180	120 - 180 mm	1286	4 / 16



**642** 钩型扳手  
Fixed Spanner Wrench

PARD NO.	Capacity	(g)	
6424550	45 - 50 mm	128	12 / 144
6425255	52 - 55 mm	174	12 / 96
6425862	58 - 62 mm	218	12 / 72
6426875	68 - 75 mm	280	12 / 72
6428090	80 - 90 mm	382	6 / 48
64292100	92 - 100 mm	392	6 / 48



**642P** 可调式钩型扳手  
Adjustable Hook Wrench  
(Pin Type)

PARD NO.	Capacity	(g)	
6421335P	13 - 35 mm	90	10 / 200
6423550P	35 - 50 mm	174	10 / 120
6425080P	50 - 80 mm	378	10 / 60
64280120P	80 - 120 mm	678	6 / 36
642120180P	120 - 180 mm	1242	4 / 16



**642** 颈部滑动钩型扳手  
Telescopic Hook Wrench

PARD NO.	Capacity	(g)	
6422570	25 - 70 mm	210	10 / 100



**643** 液压油钢  
Cylinders

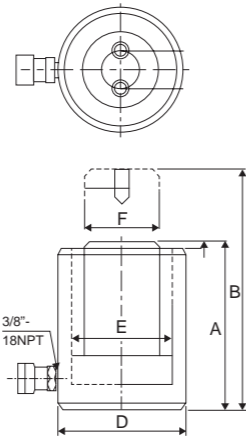
PARD NO.	Capacity	Stroke	Cylinder Effective (cm <sup>2</sup> )	Oil Capacity (cm <sup>3</sup> )	Base Mounting Holes			(kg)	
					Bolt Circle (mm)	Thread	Thd Depth (mm)		
64312008	12 Tons	8	17.9	14	50.8	5/16"-18unc	9	1.5	12
64312042	12 Tons	42	17.9	75	NIL	NIL	NIL	2.6	8
64312042A	12 Tons	42	17.9	75	NIL	NIL	NIL	2.8	8
64312076	12 Tons	76	17.9	136	50.8	5/16"-18unc	12.7	4.4	6
64320049	20 Tons	49	30.7	150	82.6	3/8"-16unc	9.4	7.7	4
64320155	20 Tons	155	30.7	476	82.6	3/8"-16unc	9.4	14.1	2
64330064	30 Tons	64	46.6	298	92.2	3/8"-16unc	14	10.9	2
64330155	30 Tons	155	46.6	722	92.2	3/8"-16unc	14	21.6	1
64360076	60 Tons	76	82.3	626	130.3	1/2"-13unc	14	28.1	1
64360153	60 Tons	153	82.3	1259	130.3	1/2"-13unc	14	35.4	1
643100076	100 Tons	76	133	1011	177.8	5/8"-11unc	19	63	1



**644** 手动液压泵  
Hand Pump

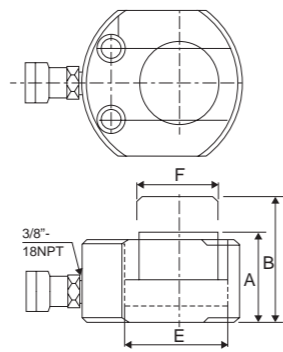
PARD NO.	Type	Usable Oil Capacity	Rating Pressure Low (Bar)	High (Bar)	(kg)	
644700	Single Acting, Two Speed	700	14	700	6.4	4
6441300	Single Acting, Two Speed	1300	14	700	6.6	4

# 扭力扳手系列 TORQUE WRENCH series



## 644 液压油钢 Cylinders

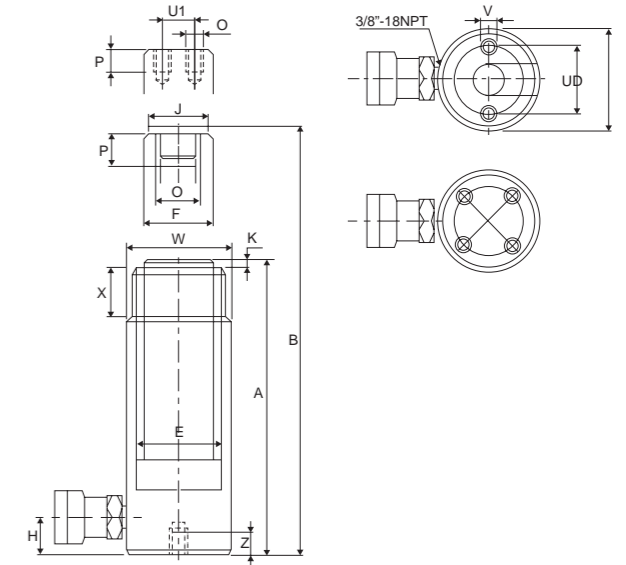
PARD NO.	Capacity	Stroke	Cylinder Effective (cm <sup>2</sup> )	Oil Capacity (cm <sup>3</sup> )	Collapsed Hight (mm)	Ext. Height (mm)	Outside Diameter (mm)	Cylinder Bore Dia (mm)	Plunger Dia (mm)	Plunger Protusion from (mm)	Plunger to Base (mm)	Plunger to M (mm)	Hole Pitch (mm)	Hole Dia (mm)	Counter Bore Dia (mm)	Counter Bore (mm)	(kg)	
644005	5 Tons	6.4	6.5	4	32	38	58×41	28.7	25.4	1.0	20.5	22.3	28.4	5.0	8.0	4.3	1.0	20
644010	10 Tons	12	14.5	18	43	54	82×55	42.9	38.1	1.0	27.7	34.0	36.5	7.0	10.7	7.8	1.4	20
644020	20 Tons	11	28.7	32	51	62	101×76	60.5	50.8	1.0	39.6	39.6	49.2	10.1	15.0	10.0	3.1	8
644030	30 Tons	13	42.1	55	58	71	117×95	73.2	63.4	1.0	47.7	44.4	52.3	10.1	15.8	11.0	4.5	6
644050	50 Tons	16	62.1	99	66	82	139×114	88.9	69.8	2.0	57.1	54.1	66.5	11.9	19.0	12.7	6.8	4
644075	75 Tons	16	102.6	164	79	95	165×139	114.3	82.6	2.0	69.8	66.8	76.2	13.4	20.6	14.2	11.3	2
644100	100 Tons	16	126.7	203	85	101	177×152	127.0	92.2	2.0	76.2	74.6	76.2	13.4	20.6	14.2	14.5	2
644150	150 Tons	16	198.1	317	100	116	215×190	158.8	114.3	2.0	95.2	62.5	117.3	13.4	20.6	14.2	26.3	1



## 645 液压油钢 Cylinders

PARD NO.	Capacity	Stroke (mm)	Cylinder Effective (cm <sup>2</sup> )	Oil Cap. (cm <sup>3</sup> )	Collapsed Hight (mm)	Ext. Height (mm)	Outside Diameter (mm)	Cylinder Bore Dia (mm)	Plunger Dia (mm)	(kg)	
645010	10 Tons	38	14.5	55	88	126	69	42.9	38.1	4.1	6
645020	20 Tons	44	28.7	129	98	143	92	60.5	50.8	5.0	4
645030	30 Tons	62	42.1	261	117	179	101	73.2	66.5	6.8	4
645050	50 Tons	60	62.1	373	122	182	124	88.9	69.8	10.9	2
645100	100 Tons	57	126.7	722	141	198	165	127.0	92.2	22.7	1

## 646 液压油钢 Max Cylinders



PARD NO.	Cylinder Capacity (TONS)	Max Cylinder Capacity (kN)	Stroke (mm)	Cylinder Effective Area (cm <sup>2</sup> )	Dimensions (mm)			Cylinder Bore Dia. (mm)	Plunger Dia. (mm)	Cyl. Bas. To Adv. Port (mm)	Saddle Dia (mm)	Saddle height (mm)	Plunge Int. Thread & Length (in)	Plunge Int. Thread & Length (mm)	Base Mounting Holes			Collar Thread (mm)	Collar Thread Length (mm)	(kg)	
					A	B	C								Bolt Circle (mm)	Thread (in)	Thd Depth (mm)				
6460501	5	25	6.5	16	110	135	38	28.7	25.4	19	25	6	3/4"-16	14	25	1/4"-20un	14	11/2"-16	28	1	12
6460503	5	76	6.5	50	165	241	38	28.7	25.4	19	25	6	3/4"-16	14	25	1/4"-20un	14	11/2"-16	28	1.5	12
6460505	5	127	6.5	83	215	342	38	28.7	25.4	19	25	6	3/4"-16	14	25	1/4"-20un	14	11/2"-16	28	1.8	12
6460507	5	177	6.5	115	273	450	38	28.7	25.4	19	25	6	3/4"-16	16	25	1/4"-20un	14	11/2"-16	28	2.4	8
6460509	5	232	6.5	151	323	555	38	28.7	25.4	19	25	6	3/4"-16	16	25	1/4"-20un	14	11/2"-16	28	2.8	8
6461002	10	54	14.5	78	121	175	57	42.9	38.1	19	35	6	1"-8	19	39	5/16"-18un	12.7	21/4"-14	26	2.3	8
6461004	10	105	14.5	152	171	276	57	42.9	38.1	19	35	6	1"-8	19	39	5/16"-18un	12.7	21/4"-14	26	3.3	8
6461006	10	156	14.5	226	247	403	57	42.9	38.1	19	35	6	1"-8	19	39	5/16"-18un	12.7	21/4"-14	26	4.4	4
6461008	10	203	14.5	294	298	501	57	42.9	38.1	19	35	6	1"-8	19	39	5/16"-18un	12.7	21/4"-14	26	5.4	4
6461010	10	257	14.5	373	349	606	57	42.9	38.1	19	35	6	1"-8	19	39	5/16"-18un	12.7	21/4"-14	26	6.4	4
6461012	10	304	14.5	441	400	704	57	42.9	38.1	19	35	6	1"-8	19	39	5/16"-18un	12.7	21/4"-14	26	6.8	4
6461014	10	356	14.5	516	450	806	57	42.9	38.1	19	35	6	1"-8	19	39	5/16"-18un	12.7	21/4"-14	26	8.2	2
6461502	15	51	20.3	104	149	200	69	50.8	41.4	19	38	9	1"-8	25	47	3/8"-16un	12.7	23/4"-16	30	3.3	6
6461504	15	101	20.3	205	200	301	69	50.8	41.4	19	38	9	1"-8	25	47	3/8"-16un	12.7	23/4"-16	30	4.1	6
6461506	15	152	20.3	308	271	423	69	50.8	41.4	19	38	9	1"-8	25	47	3/8"-16un	12.7	23/4"-16	30	5	4
6461508	15	203	20.3	411	322	525	69	50.8	41.4	19	38	9	1"-8	25	47	3/8"-16un	12.7	23/4"-16	30	6.6	4
6461510	15	254	20.3	516	373	627	69	50.8	41.4	19	38	9	1"-8	25	47	3/8"-16un	12.7	23/4"-16	30	9.5	2
6461512	15	305	20.3	619	423	728	69	50.8	41.4	19	38	9	1"-8	25	47	3/8"-16un	12.7	23/4"-16	30	10.8	2
6461514	15	356	20.3	723	474	830	69	50.8	41.4	19	38	9	1"-8	25	47	3/8"-16un	12.7	23/4"-16	30	11.8	2
6462502	25	50	33.2	166	165	215	85	65	57.2	25	50	10	11/2"-16	25	58	1/2"-13un	19	35/16"-12	49	6.4	4
6462504	25	102	33.2	339	215	317	85	65	57.2	25	50	10	11/2"-16	25	58	1/2"-13un	19	35/16"-12	49	8.2	2
6462506	25	158	33.2	525	273	431	85	65	57.2	25	50	10	11/2"-16	25	58	1/2"-13un	19	35/16"-12	49	10	2
6462508	25	210	33.2	697	323	533	85	65	57.2	25	50	10	11/2"-16	25	58	1/2"-13un	19	35/16"-12	49	12.2	2
6462510	25	261	33.2	867	374	635	85	65	57.2	25	50	10	11/2"-16	25	58	1/2"-13un	19	35/16"-12	49	14.1	1
6462512	25	311	33.2	1033	425	736	85	65	57.2	25	50	10	11/2"-16	25	58	1/2"-13un	19	35/16"-12	49	16.3	1
6462514	25	362	33.2	1202	476	838	85	65	57.2	25	50	10	11/2"-16	25	58	1/2"-13un	19	35/16"-12	49	17.7	1
6463008	30	209	42.1	880	387	596	101	73.2	73.2	57	50	10	11/2"-16	25	NIL	NIL	NIL	35/16"-12	49	18.1	1
6465002	50	51	71.2	362	176	227	127	96.2	79.5	33	71	2	NIL	NIL	95	1/2"-13un	19	5"-12	55	15	1
6465004	50	101	71.2	719	227	328	127	95.2	79.5	33	71	2	NIL	NIL	95	1/2"-13un	19	5"-12	55	19.1	1
6465006	50	159	71.2	1131	282	441	127	95.2	79.5	33	71	2	NIL	NIL	95	1/2"-13un	19	5"-12	55	23.1	1
64610006	100	168	133.3	2239	357	525	177	130.3	104.9	41	71	2	NIL	NIL	139	3/4"-10un	25	5"-7/8-12	44	59	1

# 扭力扳手系列 TORQUE WRENCH series



**647 FD** 专业微调式扭力起子  
Pre-set Torque Screwdriver

PARD NO.	Capacity	Driver	(g)	Icon	Icon
6470025FD	0.25 Nm	4 mm	35	Icon	10 / 100
6470045FD	0.45 Nm	4 mm	130	Icon	10 / 100
6470025FD-1	0.25 Nm	1/4"	35	Icon	10 / 100
6470045FD-1	0.45 Nm	1/4"	130	Icon	10 / 100

• Valve Torque Screwdriver



**6470035FD** 专业微调式扭力起子  
Pre-set Torque Screwdriver

PARD NO.	Capacity	Driver	(g)	Icon	Icon
6470035FD	0.35 Nm	4 mm	130	Icon	10 / 100



**647 FTD** 专业微调式扭力起子  
Pre-set Torque Screwdriver

PARD NO.	Capacity	Driver	(g)	Icon	Icon
6472001FTD	0.1 - 1 Nm	4 mm	32	Icon	10 / 100
64720035FTD	0.5 - 3.5 Nm	4 mm	130	Icon	10 / 100



**647 FTD** 专业微调式扭力起子 (手枪型)  
Pre-set Torque Screwdriver (Gun Type)

PARD NO.	Capacity	Driver	(g)	Icon	Icon
6472005FTD	2 - 5 Nm	1/4"	500	Icon	30
6472012FTD	4 - 12Nm	1/4"	500	Icon	30



**647 MT** 可调式扭力起子  
Adjustable Torque Screwdriver

PARD NO.	Capacity	Driver	(g)	Icon	Icon
6472005MT	1 - 5 Nm	1/4"	154	Icon	10 / 40
6472005MLT	1 - 5 Nm	1/4"	235	Icon	10 / 40
6472008MT	1 - 8 Nm	1/4"	154	Icon	10 / 40
6472008MLT	1 - 8 Nm	1/4"	235	Icon	10 / 40



**647 INS** 绝缘扭力扳手  
1000V Insulated Torque Wrench

PARD NO.	Capacity	Driver	(g)	Icon	Icon
647325INS	5 - 25Nm	3/8"	266	Icon	6 / 24



**647 INS2** 绝缘扭力扳手  
1000V Insulated Torque Wrench

PARD NO.	Capacity	Driver	Icon	Icon	Icon
647325INS2	5 - 25 Nm	3/8"	Icon	Icon	Icon
647360INS2	10 - 60 Nm	3/8"	Icon	Icon	Icon
6473100INS2	20 - 100 Nm	3/8"	Icon	Icon	Icon
6474200INS2	40 - 200 Nm	1/2"	Icon	Icon	Icon
6474300INS2	60 - 300 Nm	1/2"	Icon	Icon	Icon
6476500INS2	100 - 500 Nm	3/4"	Icon	Icon	Icon
64761000INS2	200 - 1000 Nm	3/4"	Icon	Icon	Icon



**647 MTD** 可调式扭力起子  
Torque Screwdriver

PARD NO.	Capacity	Driver	mm	(g)	Icon	Icon
647202MTD	0.4 - 2Nm	1/4"	26	133	Icon	10 / 100
647205MTD	1 - 5 Nm	1/4"	33	162	Icon	10 / 100
647208MTD	1 - 8 Nm	1/4"	33	162	Icon	10 / 100



**647 PIT** 管钳式扭力扳手  
Adjustable Pipe Torque Wrench  
(Pipeline, Construction Reinforced Linker)

PARD NO.	Capacity	Pipe Capacity	(g)	Icon	Icon
6476350PIT	70 - 350 Nm	2 - 1/2"	825	Icon	6
6476500PIT	100 - 500 Nm	2 - 1/2"	925	Icon	6



**647 T** 可调式扭力扳手  
Adjustable Torque Wrench

PARD NO.	Capacity	Driver	(g)	Icon	Icon
647225T	5 - 25 Nm	1/4"	280	Icon	20
647325T	5 - 25 Nm	3/8"	280	Icon	20
6473110T	19 - 110 Nm	3/8"	366	Icon	20
6474210T	42 - 210 Nm	1/2"	470	Icon	12
6474350T	70 - 350 Nm	1/2"	633	Icon	10
6476450T	65 - 450 Nm	3/4"	850	Icon	4
6476700T	100 - 700 Nm	3/4"	1063	Icon	4
6476980T	140 - 980 Nm	3/4"	1213	Icon	2
6478980T	140 - 980 Nm	1"	1213	Icon	2

PARD NO.	Capacity	Driver	(g)	Icon	Icon
647216TF	20 - 200 in.lb	1/4"	280	Icon	20
647316TF	20 - 200 in.lb	3/8"	280	Icon	20
647380TF	5 - 80 ft.lb	3/8"	366	Icon	20
6474150TF	10 - 150 ft.lb	1/2"	470	Icon	12
6474250TF	25 - 250 ft.lb	1/2"	633	Icon	10
6476300TF	50 - 300 ft.lb	3/4"	850	Icon	4
6476600TF	100 - 600 ft.lb	3/4"	1063	Icon	4
6476700TF	100 - 700 ft.lb	3/4"	1213	Icon	2
6478700TF	100 - 700 ft.lb	1"	1213	Icon	2

# 扭力扳手系列 TORQUE WRENCH series



**647 N** 可调式扭力扳手  
Adjustable Torque Wrench

PARD NO.	Capacity	Driver		 (kg)	
647230N	6-30 Nm	1/4"	350	0.74	20
647330N	6-30 Nm	3/8"	350	0.96	20
6473110N	19-110 Nm	3/8"	385	1.7	20
6474210N	40-210 Nm	1/2"	535	2.6	12
6474350N	70-350 Nm	1/2"	645	3.7	6
6476500N	100-500 Nm	3/4"	865	5.97	4
6476700N	140-700 Nm	3/4"	1092	6.5	2
6476980N	140-980 Nm	3/4"	1230	6.5	2
6478980N	140-980 Nm	1"	1230	11.6	1
64781500N	300-1500Nm	1"	1700	11.6	1

PARD NO.	Capacity	Driver		 (kg)	
647220NF	40-250 in.lb	1/4"	350	0.74	20
647320NF	40-250 in.lb	3/8"	350	0.96	20
647380NF	15-80 ft.lb	3/8"	385	0.84	12
6474150NF	30-150 ft.lb	1/2"	535	1.7	10
6474250NF	50-250 ft.lb	1/2"	645	2.6	6
6476300NF	50-300 ft.lb	3/4"	865	3.68	4
6476600NF	100-600 ft.lb	3/4"	1092	3.7	2
6476700NF	100-700 ft.lb	3/4"	1230	5.97	2
6478700NF	100-700 ft.lb	1"	1700	6.46	1
64781000NF	200-1000 ft.lb	1"	1700	11.58	1



**647 LT** 固定开口式扭力扳手  
Torque Wrench  
Fixed Torque (Air Conditioning & Refrigerator Service)

PARD NO.	Capacity	Driver		 (kg)	
6471718LT	18 Nm	17 mm	220	0.41	20
6471924LT	24Nm	19 mm	220	0.41	20
6472242LT	42 Nm	22 mm	230	0.45	20
6472455LT	55Nm	24 mm	230	0.45	20
6472655LT	55 Nm	26 mm	290	0.6	20
6472965LT	65 Nm	29 mm	295	0.62	20



**647 AP** 定值式扭力扳手  
Pre-Set Torque Wrench  
(Production Line)

PARD NO.	Capacity	Driver		 (kg)	
647212AP	2-12Nm	1/4" DR.	193	0.22	30
647350AP	5-50 Nm	3/8" DR.	298	0.56	20
6473100AP	15-100 Nm	3/8" DR.	365	0.76	12
6474200AP	50-200 Nm	1/2" DR.	508	1.38	12
6474300AP	60-300 Nm	1/2" DR.	540	1.68	8
6476500AP	100-500 Nm	3/4" DR.	690	6.30	4
6476800AP	150-800 Nm	3/4" DR.	940	6.80	2
64781500AP	300-1500 Nm	1" DR.	1630	11.95	1

PARD NO.	Capacity	Driver		 (kg)	
647210APF	20-120 in.lb	1/4" DR.	193	0.22	30
647340APF	4-40 ft.lb	3/8" DR.	298	0.56	20
647380APF	10-80 ft.lb	3/8" DR.	365	0.76	12
6474150APF	40-150 ft.lb	1/2" DR.	508	1.38	12
6474230APF	60-230 ft.lb	1/2" DR.	540	1.68	8
6476400APF	80-400 ft.lb	3/4" DR.	690	6.30	4
6476600APF	120-600 ft.lb	3/4" DR.	940	6.80	2
64781000APF	200-1000 ft.lb	1" DR.	1630	11.95	1



**647 M** 可调式扭力扳手  
Adjustable Torque Wrench

PARD NO.	Capacity	Driver		 (kg)	
647215M	3-15 Nm	1/4"	193	0.21	20
647230M	6-30 Nm	1/4"	300	0.59	20
647360M	10-60 Nm	3/8"	390	0.75	20
6473100M	20-100 Nm	3/8"	425	0.88	12
6474200M	40-200 Nm	1/2"	530	1.62	12
6474320M	60-320 Nm	1/2"	600	1.83	12

PARD NO.	Capacity	Driver		 (kg)	
647212MF	30-150 in.lb	1/4"	193	0.21	20
647220MF	50-250 in.lb	1/4"	300	0.59	20
647375MF	15-75 ft.lb	3/8"	425	0.88	12
6474150MF	30-150 ft.lb	1/2"	530	1.62	12
6474230MF	60-230 ft.lb	1/2"	600	1.83	12



**647 P** 可调式扭力扳手  
Adjustable Torque Wrench

PARD NO.	Capacity	Driver		 (kg)	
C647205P	1-5 Nm	1/4"	0.05 Nm	200	0.36 30
C647230P	6-30 Nm	1/4"	0.2 Nm	257	0.44 20
C6473110P	20-110 Nm	3/8"	0.5 Nm	437	1.23 10
C6474210P	40-210 Nm	1/2"	1 Nm	495	1.47 10
C6474350P	70-350 Nm	1/2"	1 Nm	560	1.62 10
C6476450P	70-450 Nm	3/4"	2.5 Nm	815	3.3 4
C6476800P	100-800 Nm	3/4"	5 Nm	1000	7.08 1
C64761500P	300-1500 Nm	3/4"	10 Nm	1700	11.8 1
C64781500P	300-1500 Nm	1"	10 Nm	1700	11.8 1
C64782000P	400-2000 Nm	1"	10 Nm	2176	13.0 1

PARD NO.	Capacity	Driver		 (kg)	
C647204PF	10-50 in.lb	1/4"	0.5 in.lb	200	0.36 30
C647216PF	40-200 in.lb	1/4"	1 in.lb	257	0.44 20
C6473100PF	10-100 ft.lb	3/8"	0.5 ft.lb	437	1.23 10
C6474150PF	30-150 ft.lb	1/2"	1 ft.lb	495	1.47 10
C6474250PF	50-250 ft.lb	1/2"	1 ft.lb	560	1.62 10
C6476300PF	50-300 ft.lb	3/4"	2.5 ft.lb	815	3.3 4
C6476600PF	100-600 ft.lb	3/4"	2.5 ft.lb	1000	7.08 1
C64761000PF	200-1000 ft.lb	3/4"	5 ft.lb	1700	11.8 1
C64781000PF	200-1000 ft.lb	1"	5 ft.lb	1700	11.8 1
C64781500PF	300-1500 ft.lb	1"	5 ft.lb	2176	13.0 1

# 扭力扳手系列 TORQUE WRENCH

series



**647 PH** 可调式扭力扳手  
Adjustable Torque Wrench

PARO NO.	Capacity	Driver	Capacity	Weight (kg)	Length	Box Qty
C647205PH	1-5 Nm	1/4"	0.05 Nm	215	0.38	30
C647230PH	6-30 Nm	1/4"	0.2 Nm	272	0.46	20
C6473110PH	20-110 Nm	3/8"	0.5 Nm	460	1.2	10
C6474210PH	40-210 Nm	1/2"	1 Nm	515	1.6	10
C6474350PH	70-350 Nm	1/2"	1 Nm	583	1.77	6

PARO NO.	Capacity	Driver	Capacity	Weight (kg)	Length	Box Qty
C647204PHF	10-50 in.lb	1/4"	0.5 in.lb	215	0.38	30
C647216PHF	40-200 in.lb	1/4"	1 in.lb	272	0.46	20
C6473100PHF	10-100 ft.lb	3/8"	0.5 ft.lb	460	1.2	10
C6474150PHF	30-150 ft.lb	1/2"	1 ft.lb	515	1.6	10
C6474250PHF	50-250 ft.lb	1/2"	1 ft.lb	583	1.77	6

The head can be flexible in 15 degrees bidirectional range.



**647 D** 可调式扭力扳手  
Adjustable Torque Wrench

PARO NO.	Capacity	Driver	Capacity	Weight (kg)	Length	Box Qty
647380D	15-80 Nm	3/8"	0.5 Nm	383	0.74	20
6473110D	20-110 Nm	3/8"	0.5 Nm	383	0.96	12
6474210D	40-210 Nm	1/2"	1 Nm	535	1.7	10
6474350D	70-350 Nm	1/2"	2.5 Nm	645	2.54	6
6476500D	100-500 Nm	3/4"	2.5 Nm	865	3.66	4
6476700D	140-700 Nm	3/4"	2.5 Nm	1088	5.94	2
6476980D	140-980 Nm	3/4"	7 Nm	1230	6.46	2
6478980D	140-980 Nm	1"	7 Nm	1230	6.46	2

PARO NO.	Capacity	Driver	Capacity	Weight (kg)	Length	Box Qty
647360DF	10-60 ft.lb	3/8"	0.5 ft.lb	383	0.74	20
647380DF	15-80 ft.lb	3/8"	0.5 ft.lb	383	0.96	12
6474150DF	30-150 ft.lb	1/2"	1 ft.lb	535	1.7	10
6474250DF	50-250 ft.lb	1/2"	2.5 ft.lb	645	2.54	6
6476300DF	100-300 ft.lb	3/4"	2.5 ft.lb	865	3.66	4
6476600DF	100-600 ft.lb	3/4"	2.5 ft.lb	1088	5.94	2
6476700DF	100-700 ft.lb	3/4"	5 ft.lb	1230	6.46	2
6478700DF	100-700 ft.lb	1"	5 ft.lb	1230	6.46	2



ANTI-CLOCK WISE CLICK FOR LEFT THREAD NUT



CLOCK WISE CLICK FOR RIGHT THREAD NUT



**647 MO** 可调式扭力扳手  
Adjustable Torque Wrench

PARO NO.	Capacity	Driver	Capacity	Weight (kg)	Length	Box Qty
647215MO	3-15 Nm	1/4"	0.2 Nm	193	0.34	30
647230MO	6-30 Nm	1/4"	0.2 Nm	257	0.44	20
647360MO	10-60 Nm	3/8"	0.25 Nm	436	1.12	10
6473100MO	20-100 Nm	3/8"	0.5 Nm	436	1.12	10
6474200MO	40-200 Nm	1/2"	1 Nm	495	1.47	10
6474320MO	60-320 Nm	1/2"	2 Nm	560	1.62	8
6476500MO	100-500 Nm	3/4"	4 Nm	815	3.31	4
6476800MO	150-800 Nm	3/4"	5 Nm	1000	7.08	2
64761000MO	200-1000 Nm	3/4"	5 Nm	1700	7.08	2
64781000MO	200-1000 Nm	1"	5 Nm	1700	7.08	2
64761500MO	300-1500 Nm	3/4"	10 Nm	1700	11.8	1
64781500MO	300-1500 Nm	1"	10 Nm	1700	11.8	1
64782000MO	400-2000 Nm	1"	10 Nm	2150	13.0	1
64783000MO	600-3000 Nm	1"	15 Nm	2750	15.0	1

PARO NO.	Capacity	Driver	Capacity	Weight (kg)	Length	Box Qty
647212MOF	30-150 in.lb	1/4"	2 in.lb	193	0.34	30
647220MOF	50-250 in.lb	1/4"	2 in.lb	257	0.44	20
647345MOF	9-45 ft.lb	3/8"	0.25 ft.lb	436	1.12	12
647375MOF	15-75 ft.lb	3/8"	0.5 ft.lb	436	1.12	12
6474150MOF	30-150 ft.lb	1/2"	0.5 ft.lb	495	1.47	10
6474230MOF	60-230 ft.lb	1/2"	1 ft.lb	560	1.62	6
6476300MOF	60-300 ft.lb	3/4"	2.5 ft.lb	815	3.31	4
6476600MOF	100-600 ft.lb	3/4"	2.5 ft.lb	1000	7.08	4
6476700MOF	150-700 ft.lb	3/4"	2.5 ft.lb	1335	7.08	1
6478700MOF	150-700 ft.lb	1"	2.5 ft.lb	1700	7.08	1
64761000MOF	200-1000 ft.lb	3/4"	5 ft.lb	1700	11.8	1
64781000MOF	200-1000 ft.lb	1"	5 ft.lb	1700	11.8	1
64781500MOF	300-1500 ft.lb	1"	5 ft.lb	2150	13.0	1
64782000MOF	400-2000 ft.lb	1"	7.5 ft.lb	2780	15.0	1



**647 PPR** 可调式扭力扳手  
Adjustable Torque Wrench

PARO NO.	Capacity	Driver	Capacity	Weight (kg)	Length	Box Qty
647205PPR	1-5 Nm	1/4"	0.05 Nm	197	0.28	30
647230PPR	6-30 Nm	1/4"	0.2 Nm	222	0.30	20
6473110PPR	20-110 Nm	3/8"	0.5 Nm	410	0.86	12
6474210PPR	40-210 Nm	1/2"	1 Nm	460	1.20	10
6474350PPR	70-350 Nm	1/2"	1 Nm	553	1.40	6
6476450PPR	75-450 Nm	3/4"	2.5 Nm	797	3.14	4
6476800PPR	100-800 Nm	3/4"	5 Nm	975	6.60	2
64761500PPR	300-1500 Nm	3/4"	10 Nm	1665	11.6	1
64781500PPR	300-1500 Nm	1"	10 Nm	1665	11.6	1
64782000PPR	400-2000 Nm	1"	10 Nm	2176	13.0	1

PARO NO.	Capacity	Driver	Capacity	Weight (kg)	Length	Box Qty
647204PPRF	10-50 in.lb	1/4"	0.5 in.lb	197	0.28	30
647216PPRF	40-200 in.lb	1/4"	1 in.lb	222	0.30	20
6473100PPRF	10-100 ft.lb	3/8"	0.5 ft.lb	410	0.86	12
6474150PPRF	30-150 ft.lb	1/2"	1 ft.lb	460	1.20	10
6474250PPRF	30-250 ft.lb	1/2"	1 ft.lb	553	1.40	6
6476300PPRF	50-300 ft.lb	3/4"	2.5 ft.lb	797	3.14	4
6476600PPRF	100-600 ft.lb	3/4"	2.5 ft.lb	975	6.60	2
64761000PPRF	200-1000 ft.lb	3/4"	5 ft.lb	1665	11.6	1
64781000PPRF	200-1000 ft.lb	1"	5 ft.lb	1665	11.6	1
64781500PPRF	300-1500 ft.lb	1"	5 ft.lb	2176	13.0	1



**647 FP** 固定式扭力扳手  
Torque Wrench (Tire Service)  
Fixed Torque

PARO NO.	Capacity	Driver	Capacity	Weight (kg)	Length	Box Qty	Color
6474088FP	88 Nm	1/2"		580	1.6	6	Yellow
6474108FP	108 Nm	1/2"		580	1.6	6	Blue
6474135FP	135 Nm	1/2"		580	1.6	6	Grey
6474163FP	163 Nm	1/2"		580	1.6	6	White
6474190FP	190 Nm	1/2"		580	1.6	6	Green

PARO NO.	Capacity	Driver	Capacity	Weight (kg)	Length	Box Qty	Color
6474065FFP	65 ft.lb	1/2"		580	1.6	6	Yellow
6474080FFP	80 ft.lb	1/2"		580	1.6	6	Blue
6474100FFP	100 ft.lb	1/2"		580	1.6	6	Grey
6474120FFP	120 ft.lb	1/2"		580	1.6	6	White
6474140FFP	140 ft.lb	1/2"		580	1.6	6	Green



**647 E** 可换头数显扭力扳手  
Digital Interchangeable Torque Handle  
Adjustable Torque

PARO NO.	Capacity	Driver	Capacity	Weight (kg)	Length	Box Qty
6471418100E	10-100 Nm	14x18		420	0.84	12
6471418200E	20-200 Nm	14x18		550	1.15	12

**Specification**

- Accuracy: ± 1%
- Memory: 10 Readings
- Unit Selection: Nm; ft.lb; in.lb; kg - m
- Operating Temperature: -15° ~ 55°C
- Storage Temperature: -40° ~ 85°C
- Humidity: 0 ~ 90%
- Battery: 1.5V AA Batteries x3  
(Do not use low self-discharge batteries.)
- Warranty: 1 Year in Normal Statement.



# 扭力扳手系列 TORQUE WRENCH series

**PARD**



## 647 E 数字扭力扳手 Digital Torque Wrench Adjustable Torque

PARD NO.	Capacity	Driver			
6473100E	10 - 100 Nm	3/8"	440	0.95	12
6474100E	10 - 100 Nm	1/2"	440	1.06	12
6474200E	20 - 200 Nm	1/2"	580	1.35	12



## 647 AT 可换头扭力扳手 Interchangeable Torque Wrench Adjustable Torque

PARD NO.	Capacity	Driver			
64791230AT	6 - 30 Nm	9×12	280	0.75	20
64791280AT	15 - 80 Nm	9×12	355	0.88	12
647912110AT	19 - 110 Nm	9×12	360	0.90	12
647141880AT	15 - 80 Nm	14×18	368	0.94	12
6471418110AT	19 - 110 Nm	14×18	373	0.96	12
6471418210AT	40 - 210 Nm	14×18	509	1.50	10

PARD NO.	Capacity	Driver			
64791220ATF	50 - 250 in.lb	9×12	280	0.75	20
64791260ATF	10 - 60 ft.lb	9×12	355	0.88	12
64791280ATF	15 - 80 ft.lb	9×12	360	0.90	12
647141860ATF	10 - 60 ft.lb	14×18	368	0.94	12
647141880ATF	15 - 80 ft.lb	14×18	373	0.96	12
6471418150ATF	30 - 150 ft.lb	14×18	509	1.50	10



## 647 EAD 数字扭矩头 Digital Torque Adapter

PARD NO.	Size	Capacity	mm		
647230EAD	1/4"	6 - 30 Nm	L75×W44	124	6/72
6473135EAD	3/8"	27 - 135 Nm	L75×W45	168	6/72
6474200EAD	1/2"	40 - 200 Nm	L75×W44	181	6/72



## 647 MGD 数字扭力起子 Digital Torque Screwdriver

PARD NO.	Capacity			
647210MGD	1 - 10 Nm	122	310	10

### Specification

- Accuracy: ± 1 %
- Memory: 10 Reading
- Unit Selection: Nm; ft.lb; in.lb; kg - m
- Operating Temperature: -10° ~ 55°C
- Storage Temperature: -20° ~ 70°C
- Humidity: 0 ~ 90%
- Battery: 1.5V UM-4 (AAA) ×3  
(Do not use low self-discharge battery)
- Warranty: 1 Year in Normal Statement.



## 647 CP 可换头扭力扳手 Interchangeable Torque Wrench Pre-set Torque

PARD NO.	Capacity	Driver			
64791212CP	2 - 12 Nm	9×12	188	0.22	30
64791250CP	5 - 50 Nm	9×12	288	0.51	20
647912100CP	15 - 100 Nm	9×12	345	0.69	12
647141850CP	5 - 50 Nm	14×18	293	0.51	30
6471418100CP	15 - 100 Nm	14×18	350	0.69	12
6471418200CP	50 - 200 Nm	14×18	480	1.25	10
6471418300CP	80 - 300Nm	14×18	510	3.55	6
6471418500CP	100 - 500Nm	14×18	650	5.80	4

PARD NO.	Capacity	Driver			
64720285800CP	150 - 800Nm	20×28.5	900	6.30	2
647202851200CP	240 - 1200Nm	20×28.5	1380	8.80	1
647202851500CP	300 - 1500Nm	20×28.5	1600	11.45	1

PARD NO.	Capacity	Driver			
64791210CPF	20 - 120 in.lb	9×12	188	0.22	30
64791240CPF	4 - 40 ft.lb	9×12	288	0.51	20
64791280CPF	10 - 80 ft.lb	9×12	293	0.69	12
647141840CPF	4 - 40 ft.lb	14×18	345	0.51	20
647141880CPF	10 - 80 ft.lb	14×18	350	0.69	12
6471418150CPF	40 - 150 ft.lb	14×18	480	1.25	10
6471418230CPF	60 - 230 ft.lb	14×18	510	3.55	6
6471418400CPF	80 - 400 ft.lb	14×18	650	5.80	4

PARD NO.	Capacity	Driver			
64720285600CPF	120 - 600 ft.lb	20×28.5	900	6.30	2
64720285800CPF	150 - 800 ft.lb	20×28.5	1380	8.80	1
647202851000CPF	200 - 1000 ft.lb	20×28.5	1600	11.45	1



## 647 IP 可换头扭力扳手 Interchangeable Torque Wrench Adjustable Torque

PARD NO.	Capacity	Driver			
64791205IP	1 - 5 Nm	9×12	0.05 Nm	193	0.34 30
64791230IP	6 - 30 Nm	9×12	0.2 Nm	219	0.42 20
647912110IP	20 - 110 Nm	9×12	0.5 Nm	220	0.97 12
6471418210IP	40 - 210 Nm	14×18	1 Nm	457	1.16 20
6471418350IP	70 - 350 Nm	14×18	1 Nm	523	1.31 6
6471418450IP	75 - 450 Nm	14×18	2.5 Nm	774	2.22 4

PARD NO.	Capacity	Driver			
64720285800IP	100 - 800 Nm	20×28.5	5 Nm	959	5.75 2
647202851500IP	300 - 1500 Nm	20×28.5	10 Nm	1786	8.20 1

PARD NO.	Capacity	Driver			
64791204IPF	10 - 50 in.lb	9×12	0.5 in.lb	193	0.34 30
64791216IPF	40 - 200 in.lb	9×12	1 in.lb	219	0.42 20
647912100IPF	10 - 100 ft.lb	9×12	0.5 ft.lb	220	0.97 12
6471418150IPF	30 - 150 ft.lb	14×18	1 ft.lb	457	1.16 20
6471418250IPF	30 - 250 ft.lb	14×18	1 ft.lb	523	1.31 6
6471418300IPF	50 - 300 ft.lb	14×18	2.5 ft.lb	774	2.22 4

PARD NO.	Capacity	Driver			
64720285600IPF	100 - 600 ft.lb	20×28.5	2.5 ft.lb	959	5.75 2
647202851000IPF	200 - 1000 ft.lb	20×28.5	5 ft.lb	1786	8.20 1

# 扭力扳手系列 TORQUE WRENCH

series



## 647 MI

可换头扭力扳手  
Interchangeable Torque Wrench  
Adjustable Torque

PARD NO.	Capacity	Driver	Scale	Weight (kg)	Volume	
64791215MI	3-15 Nm	9x12	2 Nm	188	0.22	30
64791230MI	6-30 Nm	9x12	2 Nm	290	0.58	30
64791260MI	10-60 Nm	9x12	4 Nm	370	0.8	12
647912100MI	20-100 Nm	9x12	4 Nm	375	0.81	12
647141860MI	10-60 Nm	14x18	5 Nm	400	1.14	12
6471418100MI	20-100 Nm	14x18	5 Nm	405	1.15	12
6471418200MI	40-200 Nm	14x18	10 Nm	500	1.38	10
6471418300MI	60-300 Nm	14x18	20 Nm	575	1.5	6

PARD NO.	Capacity	Driver	Scale	Weight (kg)	Volume	
64791212MIF	30-150 in.lb	9x12	20 in.lb	188	0.22	30
64791220MIF	50-250 in.lb	9x12	25 in.lb	290	0.58	30
64791245MIF	9-45 ft.lb	9x12	3 ft.lb	370	0.80	20
647141845MIF	9-45 ft.lb	14x18	3 ft.lb	375	0.81	20
64791275MIF	15-75 ft.lb	9x12	5 ft.lb	370	0.81	12
647141875MIF	15-75 ft.lb	14x18	5 ft.lb	375	1.15	12
6471418150MIF	30-150 ft.lb	14x18	10 ft.lb	500	1.38	10
6471418220MIF	60-220 ft.lb	14x18	10 ft.lb	575	1.5	6



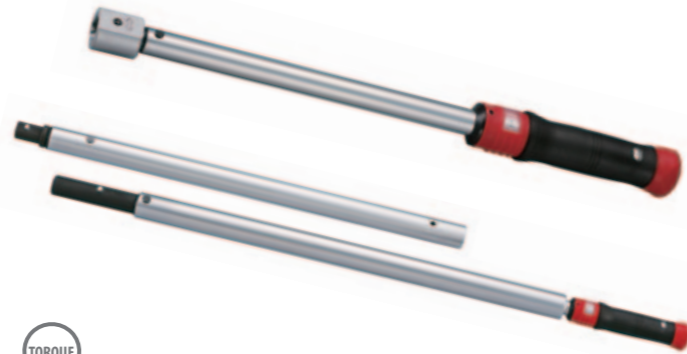
MIT2, CP, IP, Series

20x28.5 Head type is Male square Dr.  
Can be used with PARD 20x28.5 end fittings



AT, MI, MIT2, CP, IP, E Series

9X12 & 14X18 Head type is Female square Dr.  
Can be used with PARD 9x12 or 14x18 end fittings



## 647 MIT2

可换头扭力扳手  
Interchangeable Torque Wrench  
Adjustable Torque

PARD NO.	Capacity	Driver	Scale	Weight (kg)	Volume	
64791215MIT2	3-15 Nm	9x12	0.2 Nm	188	0.34	30
64791230MIT2	6-30 Nm	9x12	0.2 Nm	290	0.58	20
64791260MIT2	12-60 Nm	9x12	0.25 Nm	424	0.90	20
647912100MIT2	20-100 Nm	9x12	0.5 Nm	459	1.40	12
6471418100MIT2	20-100 Nm	14x18	0.5 Nm	464	1.41	12
6471418200MIT2	40-200 Nm	14x18	1 Nm	483	2.10	10
6471418320MIT2	60-320 Nm	14x18	2 Nm	552	2.20	6
6471418500MIT2	100-500 Nm	14x18	4 Nm	794	3.50	4

PARD NO.	Capacity	Driver	Scale	Weight (kg)	Volume	
64720285800MIT2	100-800 Nm	20x28.5	5 Nm	1101	5.38	2
647202851000MIT2	200-1000 Nm	20x28.5	5 Nm	1325	6.00	2
647202851500MIT2	300-1500 Nm	20x28.5	10 Nm	1555	11.70	1
647202852000MIT2	400-2000 Nm	20x28.5	10 Nm	2026	12.90	1

PARD NO.	Capacity	Driver	Scale	Weight (kg)	Volume	
64791212MIT2F	30-150 in.lb	9x12	2 in.lb	188	0.34	30
64791220MIT2F	50-250 in.lb	9x12	2 in.lb	290	0.58	20
64791245MIT2F	9-45 ft.lb	9x12	0.25 ft.lb	424	0.90	20
64791275MIT2F	15-75 ft.lb	9x12	0.5 ft.lb	459	1.40	12
647141875MIT2F	15-75 ft.lb	14x18	0.5 ft.lb	464	1.41	12
6471418150MIT2F	30-150 ft.lb	14x18	0.5 ft.lb	483	2.10	10
6471418230MIT2F	60-230 ft.lb	14x18	1 ft.lb	552	2.20	6
6471418300MIT2F	60-300 ft.lb	14x18	2.5 ft.lb	794	3.50	4

PARD NO.	Capacity	Driver	Scale	Weight (kg)	Volume	
64720285600MIT2F	100-600 Nm	20x28.5	2.5 in.lb	1101	5.38	2
64720285700MIT2F	150-700 Nm	20x28.5	2.5 in.lb	1325	6.00	2
647202851000MIT2F	200-1000 Nm	20x28.5	5 ft.lb	1555	11.70	1
647202851500MIT2F	300-1500 Nm	20x28.5	5 ft.lb	2026	12.90	1



## 647001 1/4"

扭力起子组套  
Torque Screwdriver Set(Motorcycle, Car Dashboard)

PARD NO.	Weight (kg)	Volume
647001	0.75	30

Contents: Torque Screwdriver & 1/4" Bit

PARD NO.	Contents	Quantity
6472005MT	1 - 1/4"DR. Torque Screwdriver	1 - 5Nm
121 250 ... 303	8 - Phillips Bit	
	PH.0x2pc; PH.1x2pc;	
	PH.2x2pc; PH.3x2pc	
12325 24... 06	2 - Slotted Bit	
	4; 6 mm	
12425 03 ... 06	4 - Hex Bit	
	3; 4; 5; 6 mm	
12625 10 ... 40	6 - Star Bit	
	T10; T15; T20; T25; T30; T40	
C81022	1 - Bit Holder	1/4" (F) x 1/4" (F)



## 647003 3/8"

11件扭力扳手组套  
11 pcs Torque Wrench Set (Motorcycle)

PARD NO.	Weight (kg)	Volume
647003	1.7	12

Contents: Torque Screwdriver & 3/8" DR.

PARD NO.	Contents	Quantity
6473110N	1 - Adjustable Torque Wrench	
	19-110 Nm/15-80 ft.lb	
C535 10 ... 21	6 - 6pt. Flank Socket	
	10; 12; 14; 17; 19; 21 mm	
C33405 004... 8	4 - Hex Socket Bit	
	4; 5; 6; 8 mm	



## 647004 1/2"

11件扭力扳手组套  
11 pcs Torque Wrench Set(Auto Repair and Maintenance)

PARD NO.	Weight (kg)	Volume
647004	2.85	6

Contents: Torque Screwdriver & 1/2" DR.

PARD NO.	Contents	Quantity
6474210N	1 - Adjustable Torque Wrench	
	40-210 Nm/30-150 ft.lb	
C545 17 ... 27	6 - 6pt. Flank Socket	
	17; 19; 21; 22; 24; 27 mm	
C344055 06... 12	4 - Hex Socket Bit	
	6; 8; 10; 12 mm	



## 647005 1/4"

10件可换头扭力扳手组套  
10 pcs Torque Handle Set(Auto Repair and Maintenance)

PARD NO.	Weight (kg)	Volume
647005	1.52	10

Contents: Torque Handle

PARD NO.	Contents	Quantity
64791230AT	1 - Interchangeable Torque Handle	9x12
	6-30 Nm/50-250 in.lb	
8029122	1 - 1/4" DR. Ratchet Head	9x12
79607S ... 14S	8 - Open End Heads	9x12
	7; 8; 9; 10; 11; 12; 13; 14 mm	

# 扭力扳手系列 TORQUE WRENCH series



## 647006 3/8"

12 件可换头扭力扳手组套  
12 pcs Torque Wrench Set  
(Auto Repair and Maintenance)

PARO NO.	(kg)	
647006	2.16	10

Contents: Torque Handle

647912110AT		1 - Interchangeable Torque Handle 9×12 19 - 110 Nm/15 - 80 ft.lb
8029123		1 - 3/8" DR. Ratchet Head 9×12
796 10S ... 19S		10 - Open End Heads 9×12 10; 11; 12; 13; 14; 15; 16; 17; 18; 19 mm

## 647008 1/2"

11 件可换头扭力扳手组套  
11 pcs Torque Handle Set  
(Auto Repair and Maintenance)

PARO NO.	(kg)	
647008	3.95	4

Contents: Torque Handle

6471418210AT		1 - Interchangeable Torque Handle 14×18 40 - 210 Nm/30 - 150 ft.lb
80214184		1 - 1/2" DR. Ratchet Head 14×18
796 13 ... 30		9 - Open End Heads 14×18 12; 14; 15; 17; 19; 22; 24; 27; 30 mm

## 647010 3/8"

12 件可换头扭力扳手组套  
12 pcs Torque Wrench Set  
(Bicycle, Motorcycle)

PARO NO.	(kg)	
647010	1.81	10

Contents: Torque Handle

64791260MI		1 - Interchangeable Torque Handle 9×12 10 - 60 Nm/9 - 45 ft.lb
8029123		1 - 3/8" DR. Ratchet Head 9×12
796 10S ... 19S		10 - Open End Heads 9×12 10; 11; 12; 13; 14; 15; 16; 17; 18; 19 mm

## 647012 1/2"

11 件可换头扭力扳手组套  
11 pcs Torque Handle Set  
(Auto Repair and Maintenance)

PARO NO.	(kg)	
647012	2.85	6

Contents: Torque Handle

6471418200MI		1 - Interchangeable Torque Handle 14×18 40 - 200Nm/30 - 150 ft.lb
80214184		1 - 1/2" DR. Ratchet Head 14×18
796 13 ... 30		9 - Open End Heads 14×18 13; 14; 15; 17; 19; 22; 24; 27; 30 mm



## 647007 1/2"

8 件可换头扭力扳手组套  
8 pcs Torque Handle Set  
(Air conditioning)

PARO NO.	(kg)	
647007	3.2	6

Contents: Torque Handle

647141880AT		1 - Interchangeable Torque Handle 14×18 15 - 80 Nm/10 - 60 ft.lb
80214184		1 - 1/2" DR. Ratchet Head 14×18
796 17 ... 29		6 - Open End Heads 14×18 17; 22; 24; 26; 27; 29 mm

## 647009 1/4"

10 件可换头扭力扳手组套  
10 pcs Torque Handle Set  
(Auto Repair and Maintenance)

PARO NO.	(kg)	
647009	1.52	10

Contents: Torque Handle

64791230MI		1 - Interchangeable Torque Handle 9×12 6 - 30 Nm/50 - 250 in.lb
8029122		1 - 1/4" DR. Ratchet Head 9×12
796 07S ... 14S		8 - Open End Heads 9×12 7; 8; 9; 10; 11; 12; 13; 14 mm

## 647011 3/8"

12 件可换头扭力扳手组套  
12 pcs Torque Handle Set  
(Auto Repair and Maintenance)

PARO NO.	(kg)	
647011	2.16	10

Contents: Torque Handle

647912100MI		1 - Interchangeable Torque Handle 9×12 20 - 100 Nm/15 - 75 ft.lb
8029123		1 - 3/8" DR. Ratchet Head 9×12
796 10S ... 19S		10 - Open End Heads 9×12 10; 11; 12; 13; 14; 15; 16; 17; 18; 19 mm

## 647013 1/4"

11 件可换头扭力扳手组套  
11 pcs Torque Handle Set  
(Heavy Motorcycle)

PARO NO.	(kg)	
647013	3.2	4

Contents: Torque Handle

64791215MI		1 - Interchangeable Torque Handle 9×12 3 - 15 Nm/30 - 150 in.lb
8029122		1 - 1/4" DR. Ratchet Head 9×12
796 5.1 ... 6.9		9 - Open End Heads 9×12 5.1; 5.8; 6.1; 6.3; 6.4; 6.5; 6.7; 6.9 mm ; 6pt. Spline

# 扭力扳手系列 TORQUE WRENCH

series



1/2"

## 647014 15 件扭力扳手组套 (轮胎专用) 15 pcs Torque Wrench Set (Tire Service)

PARD NO.	(kg)	
647014	13	1

Contents: Torque Wrench & 1/2" Impact Socket

6474088 ... 190FP		5 - Fixed Type Torque Wrench 88; 108; 135; 163; 190 Nm / 65; 80; 100; 120; 140 ft.lb
		5 - 1/2" DR. Wheel Nut Impact Socket 17; 19; 21 mm ;13/16"; 7/8"
		5 - Torque Extension Bar 90; 110; 135; 160; 190 Nm / 65; 80; 100; 120; 140 ft.lb



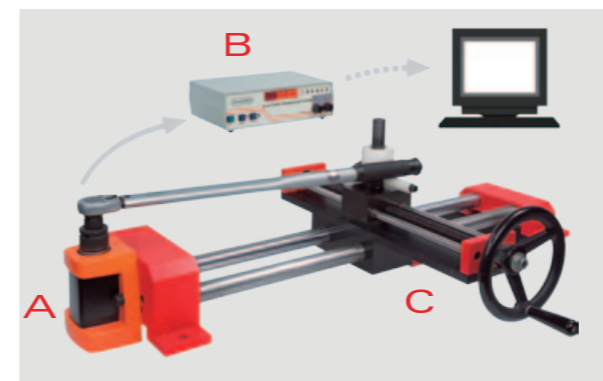
## 647015

8 件可换头扭力扳手组套  
8 pcs Torque Handle Set (Mechanical Chucks)

PARD NO.	(kg)	
647015	3.95	4

Contents: Torque Handle

6471418210AT		1 - Interchangeable Torque Handle 14×18 40 - 210 Nm / 30 - 150 ft.lb
798 32 ... 82		7 - Torque Handle Fitting 14×18 32; 43; 50; 60; 63; 72; 82 mm



## 699 扭力扳手测试台架 Torque Wrench Calibrator(Includ A.B.C)

PARD NO.	Capacity		(kg)	
	Nm	ft.lb		
69910-100TS	10 - 100 Nm	8 - 70 ft.lb	76.79	1
69920-500TS	20 - 500 Nm	15 - 350 ft.lb	78.44	1
69940-1000TS	40 - 1000 Nm	30 - 750 ft.lb	78.50	1
69970-2000TS	70 - 2000 Nm	50 - 1500 ft.lb	91.91	1



A. 扭力感应器  
A. Torque Sensor

PARD NO.	Dimension (mm)	(kg)	
69910-100TS	101(D)×93(W)×66(H)	1.15	1
69920-500TS	154(D)×134(W)×90(H)	3.25	1
69940-1000TS	154(D)×134(W)×90(H)	3.31	1
69970-2000TS	205(D)×200(W)×121(H)	6.35	1



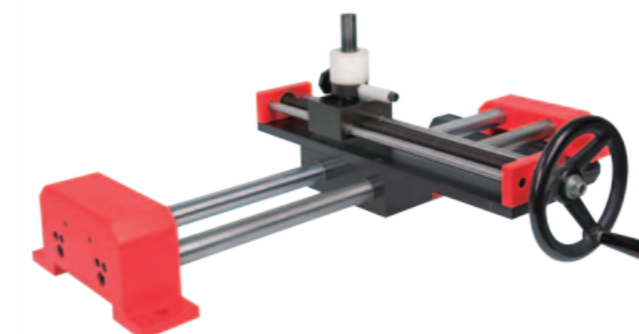
B. 扭力显示器  
B. Torque Display

PARD NO.	Dimension (mm)	(kg)	
	190(D)×260(W)×90(H)	1.70	1

- Accuracy: ± 1%
- Unit Selection: in.lb / ft.lb / cNm / Nm / kg-cm / kg-m
- Operating Temperature: -15°C~55°C
- Storage Temperature: -40°C~85°C
- Humidity: 0~90%
- Power Source: AC100 - 240V / 50 - 60HZ
- Output: RS232C
- AC 100 / 200 V

C. 扭力扳手台架  
C. Torque Wrench Loader

PARD NO.	/	Operating Range		(kg)	
		Min(mm)	Max(mm)		
699800M	800	180	800	73.94	1
6991500M	1500	180	1500	83.86	1



# 扭力扳手系列 TORQUE WRENCH series



Hex: 1/4", 9 mm



Hex: 14; 27; 32 mm



## 699 扭力测试器 Easy Torque Test

PARD NO.	Capacity	Driver	(g)	
699075 - 15ET	0.75 - 15 Nm	1/4"	3910	4
6991.5 - 30ET	1.5 - 30Nm	Hex 9 mm	3910	4
6997.5 - 150ET	7.5 - 150 Nm	Hex 14 mm	3930	4
69925 - 500ET	25 - 500 Nm	Hex 27 mm	3930	4
69950 - 1000ET	50 - 1000Nm	Hex 27 mm	3950	4
699100 - 2000ET	100 - 2000Nm	Hex 32 mm	3950	4

PARD NO.	Capacity	Driver	(g)	
699074 - 11ETF	0.74 - 11 ft.lb	1/4"	3910	4
6991 - 22ETF	1 - 22 ft.lb	Hex 9 mm	3910	4
6995 - 110ETF	5 - 110 ft.lb	Hex 14 mm	3930	4
69918 - 370ETF	18 - 370 ft.lb	Hex 27 mm	3930	4
69936 - 740ETF	36 - 740 ft.lb	Hex 27 mm	3950	4
69975 - 1500ETF	75 - 1500 ft.lb	Hex 32 mm	3950	4



## 69901 列表机 Printer



PARD NO.	(g)	
69901	1850	1



## 796S 扭力扳手插头 (开口头) Torque Handle Fittings (Open Ended Type)

PARD NO.	Driver	Size (mm)		(g)	
79607S	9×12	7	37	38	10/400
79608S	9×12	8	37	38	10/400
79609S	9×12	9	37.5	39	10/400
79610S	9×12	10	38.5	42	10/400
79611S	9×12	11	38.5	43	10/400
79612S	9×12	12	39.5	48	10/400
79613S	9×12	13	42	52	10/400
79614S	9×12	14	42	59	10/400
79615S	9×12	15	43	59	10/200
79616S	9×12	16	44.5	67	10/200
79617S	9×12	17	44.5	67	10/200
79618S	9×12	18	44.5	75	10/200
79619S	9×12	19	46	75	10/200

## 796 扭力扳手插头 (开口头) Torque Handle Fittings (Open Ended Type)

PARD NO.	Driver	Size (mm)		(g)	
79613	14×18	13	62.5	148	10/100
79614	14×18	14	63	154	10/100
79615	14×18	15	64	154	10/100
79616	14×18	16	64	173	10/100
79617	14×18	17	64	173	10/100
79618	14×18	18	65	192	10/100
79619	14×18	19	65	193	10/100
79621	14×18	21	66	217	10/100
79622	14×18	22	66	222	10/100
79624	14×18	24	67	225	5/80
79626	14×18	26	70	273	5/80
79627	14×18	27	70	281	5/80
79629	14×18	29	74	312	5/80
79630	14×18	30	74	312	5/80
79632	14×18	32	76.5	322	5/80
79634	14×18	34	76.5	322	5/80
79636	14×18	36	78	332	5/80
79638	14×18	38	78	332	5/80
79640	14×18	40	80	335	5/80
79641	14×18	41	80	340	5/80
79642	14×18	42	80	350	5/60
79644	14×18	44	80	380	5/60
79646	14×18	46	85	390	5/60



## 7960912 扭力扳手插头 Torque Handle Fittings

PARD NO.	Driver		(g)	
7960912	9×12	25mm	23	10/400



## 7961418 扭力扳手插头 Torque Handle Fittings

PARD NO.	Driver		(g)	
7961418	14×18	42mm	104	10/200

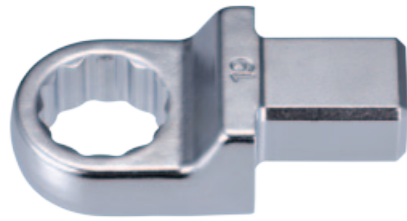


## 796 扭力扳手插头 (开口头) Torque Handle Fittings (Open Ended Type)

PARD NO.	Driver	Size (mm)		(g)	
79650	20×28.5	50	139	970	2/10
79655	20×28.5	55	147	1117	2/10
79660	20×28.5	60	155	1120	2/10
79665	20×28.5	65	163	1125	2/10

# 扭力扳手系列 TORQUE WRENCH

series



**797S** 扭力扳手插头 (梅花型)  
Torque Handle Fittings  
(Ring Ended Type)

PARD NO.	Driver	Size (mm)			
79707S	9×12	7	37	38	10/400
79708S	9×12	8	37	38	10/400
79710S	9×12	10	37.5	39	10/400
79711S	9×12	11	38.5	42	10/400
79712S	9×12	12	38.5	43	10/400
79713S	9×12	13	39.5	48	10/400
79714S	9×12	14	42	52	10/400
79715S	9×12	15	42	59	10/400
79716S	9×12	16	43	59	10/400
79717S	9×12	17	44.5	67	10/200
79718S	9×12	18	44.5	67	10/200
79719S	9×12	19	44.5	75	10/200
79721S	9×12	21	44.5	75	10/200
79722S	9×12	22	44.5	75	10/200

**797** 扭力扳手插头 (梅花型)  
Torque Handle Fittings  
(Ring Ended Type)

PARD NO.	Driver	Size (mm)			
79713	14×18	13	62.5	148	10/100
79714	14×18	14	63	154	10/100
79715	14×18	15	64	154	10/100
79716	14×18	16	64	173	10/100
79717	14×18	17	64	173	10/100
79718	14×18	18	65	192	10/100
79719	14×18	19	65	193	10/100
79721	14×18	21	66	217	10/100
79722	14×18	22	66	222	10/100
79724	14×18	24	67	225	5/80
79726	14×18	26	70	273	5/80
79727	14×18	27	70	281	5/80
79729	14×18	29	74	312	5/80
79730	14×18	30	74	312	5/80
79732	14×18	32	76.5	322	5/80
79734	14×18	34	76.5	322	5/80
79736	14×18	36	78	332	5/80
79738	14×18	38	78	332	5/80
79741	14×18	41	80	340	5/80
79742	14×18	42	80	350	5/60
79744	14×18	44	80	380	5/60
79746	14×18	46	85	390	5/60



**797** 扭力扳手插头 (梅花型)  
Torque Handle Fittings  
(Ring Spanner Head)

PARD NO.	Driver	Size (mm)			
79750	20×28.5	50	138	990	2/10
79755	20×28.5	55	147	1217	2/10
79760	20×28.5	60	156	1220	2/10
79765	20×28.5	65	163	1225	2/10



**798** 扭力扳手插头 (钩型)  
Torque Handle Fittings  
(Hook Head)

PARD NO.	Driver	Range	±		
79832	14×18	32 mm	2.5 mm	236	10/80
79843	14×18	43 mm	2.5 mm	272	10/80
79850	14×18	50 mm	2.5 mm	262	10/80
79860	14×18	60 mm	2.5 mm	272	10/80
79863	14×18	63 mm	2.5 mm	260	10/80
79872	14×18	72 mm	2.5 mm	292	10/80
79882	14×18	82 mm	2.5 mm	296	10/80



**799** 扭力扳手插头 (Y型)  
Torque Handle Fittings (Collet Head)

PARD NO.	Driver	Range		
799316	14×18	31.6 mm	218	10/80
799349	14×18	34.9 mm	234	10/80
799419	14×18	41.9 mm	242	10/80
79950	14×18	50 mm	259	10/80
799629	14×18	62.9 mm	313	10/80



**802** 扭力扳手插头 (棘轮头)  
Torque Handle Fittings  
(Ratchet Head)

PARD NO.	Driver1	Driver2	Teeth			
8029122	1/4"DR.	9×12	24	56	84	10/100
8029123	3/8"DR.	9×12	24	69	176	10/100
8029124	1/2"DR.	9×12	24	69	186	10/100
80214183	3/8"DR.	14×18	24	78	212	10/100
80214184	1/2"DR.	14×18	24	78	222	10/100



**802** 扭力扳手插头 (棘轮头)  
Torque Handle Fittings  
(Ratchet Head)

PARD NO.	Driver1	Driver2	Teeth			
802202856	3/4"DR.	20×28.5	60	137	1400	1/12
802202858	1"DR.	20×28.5	60	137	1500	1/12



**802R** 扭力扳手插头 (棘轮头)  
Torque Handle Fittings  
(Ratchet Head)

PARD NO.	Driver1	Driver2	Teeth			
8029122R	1/4"DR.	9×12	72	47.5	78	10/100
8029123R	3/8"DR.	9×12	72	55	158	10/100
8029124R	1/2"DR.	9×12	72	55	170	10/100
80214183R	3/8"DR.	14×18	72	62.5	196	10/100
80214184R	1/2"DR.	14×18	72	62.5	208	10/100

# 钳子及 配件系列

## PLIERS & ACCESSORIES

series



**649** 可调式活络扳手  
Adjustable Gauged Wrench

PARD NO.	Size (mm)			
649150	20	150	170	10/100
649200	24	200	290	10/80
649250	29	250	500	10/40
649300	33	300	765	6/36
649375	46	375	1300	4/16
649450	60	450	2150	2/10
649600	70	600	3700	1/6



**649A** 可调式活络扳手  
Adjustable Gauged Wrench

PARD NO.	Size (mm)			
649200A	28	200	260	10/80
649250A	33	250	423	10/40
649300A	38	300	765	6/36
649375A	51	375	1191	4/16



**649B** 可调式活络扳手  
Adjustable Gauged Wrench

PARD NO.	Size (mm)			
649200B	38	200	260	10/80
649250B	50	250	535	10/40



**651** 扭力倍增器  
Torque Multiplier

PARD NO.	Input		Output				
	Input1	Input2	Output1	Output2			
6511500	1/2"DR.	500Nm	3/4"DR.	1500Nm	420	3.09	4
6513000	3/4"DR.	1000Nm	1"DR.	3000Nm	500	6.49	4
6511500	Input: 1/2"DR.(F)		Max: 500Nm / 365ft.lb				
	Output: 3/4"DR.(M)		Max: 1500Nm / 1100ft.lb				
	Output / Input = 3 : 1						
6513000	Input: 3/4"DR.(F)		Max: 1000Nm / 730 ft.lb				
	Output: 1"DR.(M)		Max: 3000Nm / 2200ft.lb				
	Output / Input = 3 : 1 ± 6%						



**651** 扭力倍增器  
Torque Multiplier

PARD NO.	Input		Output				
	Input1	Input2	Output1	Output2			
6511500MT2	150Nm / 110ft.lb	1500Nm / 1100ft.lb	193	3.4	4		
6514000MT2	400Nm / 290ft.lb	4000Nm / 2900ft.lb	263	8.9	2		
6511500MT2	Input: 1/2" DR. (F)		Max: 150Nm / 110ft.lb				
	Output: 3/4"DR. (M)		Max: 1500Nm / 1100ft.lb				
	Output / Input = 10 : 1 ± 6%						
6514000MT2	Input: 1/2" DR. (F)		Max: 400Nm / 290ft.lb				
	Output: 1-1/2" DR. (M)		Max: 4000Nm / 2900ft.lb				
	Output / Input = 10 : 1 ± 6%						



**653** 三合一弯管器  
3 In 1 Tubing Bender (180°)

PARD NO.	Size			
	(mm)	(inch)		
65301	6; 8; 10	mm	380	10/60
65302	1/4; 5/16; 3/8	inch	390	10/60



**65303** 弯管器  
Handy Bender (90°)

PARD NO.	Size			
	(mm)	(inch)		
65303	3; 4; 6	mm	390	50/19.5/20.5/2



**65304** 弯管器  
Handy Bender (180°)

PARD NO.	Size			
	(mm)	(inch)		
65304	4; 6; 8; 10	mm	506	6/24



**65305** 弯管器  
Handy Bender (180°)

PARD NO.	Size			
	(mm)	(inch)		
65305	6; 10; 12	mm	506	6/24
	1/4; 3/8; 1/2	inch		



**65401** 台虎钳 (不含转台)  
Grey Cast Iron Bench Vise (without base)

PARD NO.	Jaw Open	Depth		
6540104	4"	2 - 5/8"	12.2	1
6540105	5"	3 - 1/4"	16.0	1
6540106	6"	3 - 3/4"	21.5	1
6540107	7"	4"	29.2	1

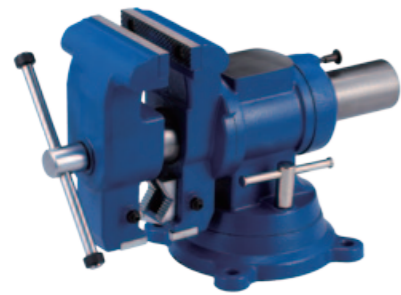


**65402** 台虎钳 (不含转台)  
All Steel Swivel Base Vise

PARD NO.	Jaw Open	Depth		
6540203	3"	2"	4.5	1
6540204	4"	2 - 1/4"	7.5	1
6540205	5"	2 - 5/8"	11	1
6540206	6"	3"	14.5	1
6540208	8"	3 - 1/2"	20.5	1
6540210	10"	4"	25.6	1

钳子及  
配件系列

PLIERS & ACCESSORIES  
series



**65403** 台虎钳 (不含转台)  
Grey Cast Iron Bench Vise  
(without base)

PARD NO.	Jaw Open	Depth	(kg)	
6540305	5"	2-5/8"	12.2	1



**65406** 台虎钳  
Gross Vise

PARD NO.	Size	Jaw Open	Depth	(kg)	
6540604	4"	2-3/4"	3/4"	6.2	1
6540605	5"	4"	1"	10	1
6540606	6"	5"	1"	13.5	1
6540607	7"	5-1/2"	1"	16.5	1



**65602** 袖珍切管钳  
Mini Tubing Cutter

PARD NO.	Size		(g)	
	(mm)	(inch)		
65602	3-16 mm	1/8"-5/8"	100	10/100



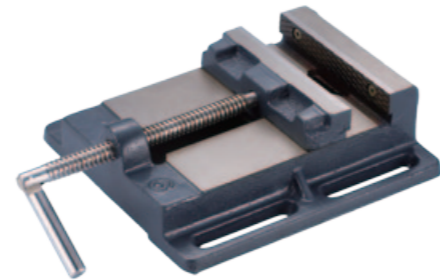
**65605** 重力链管子刀  
Heavy Duty Tailpipe &  
Tubing Cutter

PARD NO.	Size		(g)	
	(mm)	(inch)		
65605	19-75 mm	3/4"-3"	600	6/24



**65404** 台虎钳 (不含转台)  
Grey Cast Iron Bench Vise  
(without base)

PARD NO.	Jaw Open	Depth	(kg)	
6540404	4"	2-5/8"	12.2	1
6540405	5"	3-1/4"	16	1
6540406	6"	3-3/4"	21.5	1
6540408	8"	4"	29.2	1



**65407** 重型平口钳  
Drilling Press Vise

PARD NO.	Size	Jaw Open	Depth	(kg)	
6540703	3"	2-3/4"	3/4"	16	4
6540704	4"	4"	1"	18	4
6540705	5"	5"	1"	20	4
6540706	6"	5-1/2"	1"	19.2	4



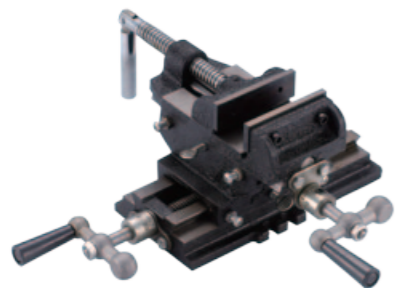
**65603** 链管子刀  
Exhaust Pipe Cutter

PARD NO.	Size		(g)	
	(mm)	(inch)		
65603	19-83 mm	3/4"-3-1/4"	569	10/40



**65606** 重力管子刀  
Heavy Duty Tubing Cutter

PARD NO.	Size		(g)	
	(mm)	(inch)		
65606	3-63 mm	1/8"-2-1/2"	812	24



**65405** 机床专用台虎钳  
Gross Vise

PARD NO.	Size	Jaw Open	Depth	(kg)	
6540503	3"	2-3/4"	3/4"	16	1
6540504	4"	4"	1"	18	1
6540505	5"	5"	1"	20	1
6540506	6"	5-1/2"	1"	19.2	1



**65601** 划动式切管钳  
Telescopic Tubing Cutter

PARD NO.	Size		(g)	
	(mm)	(inch)		
65601	4-32 mm	3/16"-1-1/4"	283	10/60



**65604** 链管子刀  
Chain Pipe Cutter

PARD NO.	Size	(g)	
65604	330mm	755	6/36



**658** G型夹钳  
C-Clamp

PARD NO.	Size	(g)	
658025	1	215	100
658038	1-1/2	220	100
658050	2	330	50
658075	3	680	25
658100	4	1100	20
658125	5	1800	18
658150	6	2900	10
658200	8	3932	6
658250	10	5500	4
658300	12	8333	3



# 液压拉马系列 HYDRAULIC PULLER

series



**65901** 两爪拉马  
Gear Puller - 2 Jaws

PARD NO.	Size	(g)	
6590103	3"	440	40
6590104	4"	775	24
6590106	6"	1650	12
6590108	8"	3500	6
6590112	12"	7000	4



**6590125** 25 吨两爪液压拉马组套  
25 Ton Two Jaws Hydraulic Gear Puller Set

PARD NO.	(kg)	
6590125	23	1
Contents:		
1 - Hydraulic Ram	Ø58.6 mm	
1 - Twin Head		
2 - Jaw		
4 - Steel Plate		
4 - Screw & Nut	Ø 35 mm×L45 mm	
2 - Ram Extension	Ø 35 mm×L100 mm; Ø 35 mm×L150mm	

6590125 Max Reach: 510 mm Max Speed: 720 mm



**6590222** 22" 三爪液压拉马组套  
22" Three Jaws Hydraulic Gear Puller

PARD NO.	(kg)	
6590222	28	1
Contents:		
1 - Forcing Screwdriver		
1 - Central Nut		
1 - Triple Head		
3 - Jaw		
6 - Steel Plate		
6 - Screw & Nut		
1 - Sent Pop	Ø 35 mm×45 mm	

6590222 Max Reach: 510 mm Max Speed: 720 mm



**6590122** 22" 两爪拉马  
22" Two Jaws Gear Puller

PARD NO.	(kg)	
6590122	21	1
Contents:		
1 - Forcing Screw		
1 - Central Nut		
1 - Twin Head		
2 - Jaw		
4 - Steel Plate		
4 - Screw & Nut		
1 - Sent Pop	Ø35 mm×L45 mm	

6590122 Max Reach: 510 mm Max Speed: 720 mm



**65902** Gear Puller - 3 Jaws

PARD NO.	Size	(g)	
6590203	3"	550	40
6590204	4"	1063	24
6590206	6"	2250	12
6590208	8"	4500	6
6590212	12"	11kgs	2



**6590225** 25 吨三爪液压拉马组套  
25 Ton Three Jaws Hydraulic Gear Puller

PARD NO.	(kg)	
6590225	30	1
Contents:		
1 - Hydraulic Ram	Ø58.6 mm	
1 - Triple Head		
3 - Jaw		
6 - Steel Plate		
6 - Screw & Nut		
2 - Sent Pop	Ø35 mm×100 mm; Ø35 mm×150 mm	

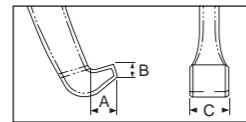
6590225 Max Reach: 510 mm Max Speed: 720 mm

# 液压拉马系列 HYDRAULIC PULLER series



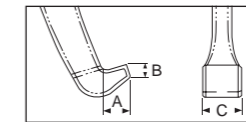
## 659C2 液压拉马配件 Hydraulic Puller Accessory

PARD NO.	Capacity	Reach (mm)	Spread (mm)	Jaw Tip (mm)			(kg)	Box
				A	B	C		
659C210	6 / 10 Tons	190	90 / 120	15	7	24	6.8	4
659C212	8 / 12 Tons	245	90 / 120	15	7	24	6.12	4



## 659C3 液压拉马配件 Hydraulic Puller Accessory

PARD NO.	Capacity	Reach (mm)	Spread (mm)	Jaw Tip (mm)			(kg)	Box
				A	B	C		
659C310	6 / 10 Tons	190	90 / 120	15	7	24	10.85	2
659C312	8 / 12 Tons	245	90 / 120	15	7	24	11.6	2



## 659C214 14" 分离式拉马 14" Spread Push Puller

PARD NO.	(kg)	Box
659C214	16	1

Contents:

- 1 - Forcing Screw
- 1 - Central Nut
- 1 - Beam
- 2 - Main Rod  
Hex Bar 1" x L400mm x 3/4"
- 2 - Extension Rod  
Hex Bar 1" x L300mm x 3/4"
- 1 - Sent Pop  
Ø35 mm x L45 mm

659C214 Max Spread: 370 mm



## 659C214A 14" 分离式重力拉马 14" Spread Hydraulic Push Puller

PARD NO.	(kg)	Box
659C214A	19	1

Contents:

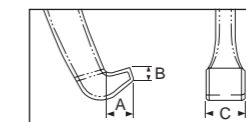
- 1 - Hydraulic Ram Ø58.6 mm
- 1 - Beam
- 2 - Main Rod  
Hex Bar 1" x L400mm x 3/4"
- 2 - Extension Rod  
Hex Bar 1" x L300mm x 3/4"
- 1 - Sent Pop
- 2 - Ram Extension Rod  
Ø35 mm x L100 mm; Ø35 mm x L150 mm

659C214A Max Spread: 370 mm



## 65903 液压拉马 - 标准型 Hydraulic Puller - Standard Type

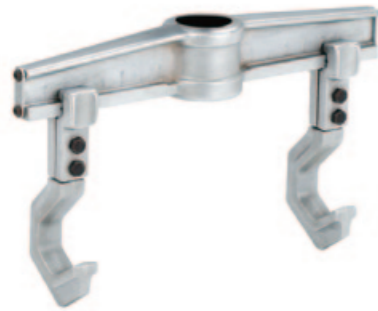
PARD NO.	Capacity	Reach (mm)	Spread (mm)	Jaw Tip (mm)			(kg)	Box
				A	B	C		
6590315A	15 Tons	100 / 410	82 - 180	32	8	26	21.65	1
6590315B	15 Tons	100 / 410	82 - 180	ØM60			22.9	1
6590315AB	15 Tons	100 / 410	82 - 180	ØM60/32	8	26	25.2	1



# 液压拉马系列 HYDRAULIC PULLER series



6590315C

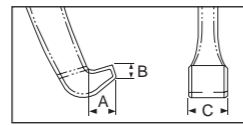


6590315D



## 65903 配件 Accessories

PARD NO.	Capacity	Reach (mm)	Spread (mm)	Jaw Tip (mm)			(kg)	Box
				A	B	C		
6590315C	15 Tons		100-410	ØM60			10.92	2
6590315D	15 Tons		100-410	32	8	26	9.7	2
6590315CD	15 Tons	150/205	100-410	ØM60/32	8	26	13.2	2



6590412D



6590412E



## 65904 手动液压拉拔器组套 Hydraulic Pusher

PARD NO.	Capacity	Reach (mm)	Spread (mm)	Stroke (mm)	Extension Piece (mm)			(kg)	Box
					A	B	C		
6590412D	12 Tons	240	58-270	82	90	160	230	54.3	1
6590412E	12 Tons	240	58-270	82	90	160	230	53.05	1



6590412A



6590412B



## 65904 手动液压拉拔器组套 Hydraulic Pusher

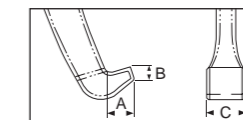
PARD NO.	Capacity	Spread (mm)	Stroke (mm)	Extension Piece (mm)			(kg)	Box
				A	B	C		
6590412	12 Tons	58-270	82	90	160	230	30.1	1
6590412A	12 Tons	58-270	82	90	160	230	33.7	1
6590412B	12 Tons	58-270	82	90	160	230	36.95	1
6590412C	12 Tons	58-270	82	90	160	230	32.6	1

6590412C



## 65905 液压拉马 - 盒装 Hydraulic Puller - Package

PARD NO.	Capacity	Reach (mm)	Spread (mm)	Stroke (mm)	Jaw Tip (mm)			(kg)	Box		
					A	B	C				
6590508	8 Tons	165	190/300	30-200/260	90-235	82-130	15	7	22/24	20.65	1
6590510	10 Tons	195	190/300	30-250/310	90-235	82-130	13/15	5/7	22/24	22.2	1
6590512	12 Tons	210	190/300	30-300/355	90-235	82-160	20/15	7	26/24	23.4	1
6590515	15 Tons	240	190/300	30-300/370	90-235	82-160	15	8/7	29/24	25.95	1



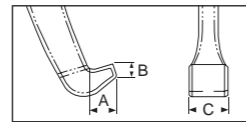
# 液压拉马系列 HYDRAULIC PULLER

series



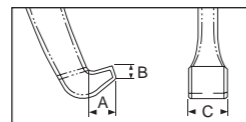
## 65906 液压拉马 Hydraulic Puller

PARD NO.	Capacity	Reach (mm)	Spread (mm)	Stroke (mm)	Jaw Tip (mm)			(kg)	Box
					A	B	C		
6590604	4 Tons	165	30-200/260	55-105	15	7	22	7.2	2
6590606	6 Tons	165	30-200/260	82-130	15	7	22	7.5	2
6590606L	6 Tons	195	30-200/300	82-180	20	7	26	8.8	2
6590608	8 Tons	210	30-250/355	82-160	20	7	26	9.7	2
6590608L	8 Tons	240	30-300/380	82-240	20	9	30	11.1	2
6590615	15 Tons	240	50-280/380	82-180	20	9	30	11.1	2



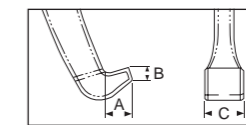
## 65906D 液压拉马 Hydraulic Puller

PARD NO.	Capacity	Reach (mm)	Spread (mm)	Stroke (mm)	Jaw Tip (mm)			(kg)	Box
					A	B	C		
6590606D	6 Tons	165/195	30-260/300	82-180	15/20	7	22/26	10.3	2
6590608D	8 Tons	210/240	30-300/380	82-240	20	7/9	26/30	13.13	2



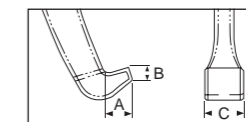
## 65906D 液压拉马 - 盒装 Hydraulic Puller - Package

PARD NO.	Capacity	Reach (mm)	Spread (mm)	Stroke (mm)	Jaw Tip (mm)			(kg)	Box
					A	B	C		
6590615D	15 Tons	240/320	50-350/410	82-280	20/28	9/11	30/33	28.4	2
6590615L	15 Tons	320	50-350/410	82-280	28	11	33	26.26	2



## 65906-3 液压拉马 - 盒装 Hydraulic Puller - Package

PARD NO.	Capacity	Reach (mm)	Spread (mm)	Stroke (mm)	Jaw Tip (mm)			(kg)	Box
					A	B	C		
6590606-3	6 Tons	165	30-200/260	82-130	15	7	22	12.75	1
6590608-3	8 Tons	210	30-300/355	82-160	20	7	26	18.5	1
6590615-3	15 Tons	240	50-280/180	82-180	20	9	30	20.2	1

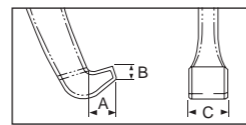


# 液压拉马系列 HYDRAULIC PULLER series



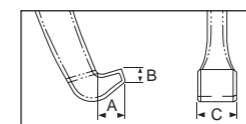
**65907** 液压拉马 Hydraulic Puller

PARD NO.	Capacity	Reach (mm)	Spread (mm)	Stroke (mm)	Jaw Tip (mm)			(kg)	Box
					A	B	C		
6590710	10 Tons	195	30-250/310	82-130	13	5	22	10.7	2
6590710L	10 Tons	250	30-280/340	82-180	15	8	25	18.3	1
6590712	12 Tons	240	30-300-370	82-160	15	8	25	19	1
6590712L	12 Tons	280	30-330/400	82-240	18	8	29	23.3	1
6590720	20 Tons	275	50-360/430	82-180	18	8	29	24.65	1
6590720L	20 Tons	330	50-380/450	82-280	28	11	33	29.3	1
6590725	25 Tons	315	50-410/480	110-220	28	11	33	34.8	1
6590725L	25 Tons	380	50-440/540	110-330	30	14	40	43.8	1
6590730	30 Tons	405	100-540/610	110-260	30	14	40	52.65	1



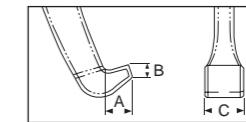
**65907D** 液压拉马 Hydraulic Puller

PARD NO.	Capacity	Reach (mm)	Spread (mm)	Stroke (mm)	Jaw Tip (mm)			(kg)	Box
					A	B	C		
6590710D	10 Tons	195/250	30-280/340	82-180	13/15	5/8	22/25	14.1	1
6590712D	12 Tons	240/280	30-330/400	82-240	15/18	8	25/29	24	1
6590720D	20 Tons	275/330	50-380/450	82-280	18/28	8/11	29/33	32.8	1
6590725D	25 Tons	315/380	50-440/540	110-330	28/30	8/11	33/40	64.35	1



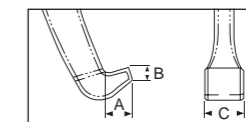
**65907-3** 液压拉马 - 盒装 Hydraulic Puller - Package

PARD NO.	Capacity	Reach (mm)	Spread (mm)	Stroke (mm)	Jaw Tip (mm)			(kg)	Box
					A	B	C		
6590710-3	10 Tons	195	30-250/310	82-130	13	5	22	14.3	2
6590712-3	12 Tons	240	30-300/370	82-160	15	8	22	23	1
6590720-3	20 Tons	275	50-360/430	82-180	18	8	29	24.45	1



**65908** 液压拉马 - 分离型 Hydraulic Puller - Separate Type

PARD NO.	Capacity	Reach (mm)	Spread (mm)	Stroke (mm)	Jaw Tip (mm)			(kg)	Box
					A	B	C		
6590815	15 Tons	240	50-280/380	82-180	20	9	30	26	1
6590815D	15 Tons	240/320	50-350/410	82-280	20/28	9/11	30/33	34.15	1



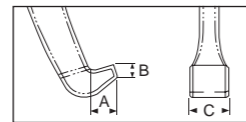
# 液压拉马系列 HYDRAULIC PULLER

series



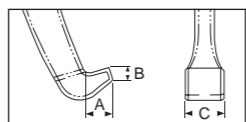
## 65908 液压拉马 - 分离型 Hydraulic Puller - Separate Type

PARD NO.	Capacity	Reach (mm)	Spread (mm)	Stroke (mm)	Jaw Tip (mm)			(kg)	Box
					A	B	C		
6590815L	15 Tons	320	50-350/410	82-280	28	11	33	22.15	1
6590815E	15 Tons	275	50-360/430	82-180	18	8	29	30.35	1
6590815LE	15 Tons	330	50-380/450	82-280	28	11	33	35.25	1
6590815DE	15 Tons	275/330	50-380/450	82-280	18/28	8/11	29/33	37.9	1
65908225	22.5 Tons	315	50-410/480	110-220	28	11	33	39.5	1
65908225L	22.5 Tons	380	50-440/540	110-330	30	14	40	49.25	1
65908225D	22.5 Tons	315/380	50-440/540	110-330	28/30	11/14	33/40	51.25	1
65908275	27.5 Tons	405	50-540/610	110-260	30	14	40	53.5	1



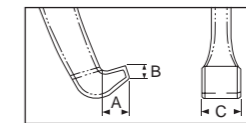
## 65908 液压拉马 - 分离型 Hydraulic Puller - Separate Type

PARD NO.	Capacity	Reach (mm)	Spread (mm)	Stroke (mm)	Jaw Tip (mm)			(kg)	Box
					A	B	C		
6590850	50 Tons	465	580/750	125-275	40	29	48	123.3	1
6590850L	50 Tons	635	580/1000	125-425	40	29	48	133.5	1
6590850D	50 Tons	465/635	580/1000	125-425	40	29	48	167.2	1



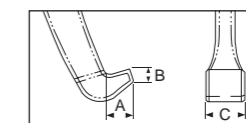
## 65909 液压拉马 - 分离型 Hydraulic Puller - Separate Type

PARD NO.	Capacity	Reach (mm)	Spread (mm)	Stroke (mm)	Jaw Tip (mm)			(kg)	Box
					A	B	C		
6590906	6 Tons	190/300	90/210	82	15	7	24	15.05	1
6590908	8 Tons	245/300	90/210	82	15	7	24	16.16	1
6590910	10 Tons	190/300	90/210	82	15	7	24	14.95	1
6590912	12 Tons	245/300	90/210	82	15	7	24	17.95	1



## 65910 手动机械拉拔器组套 Mechanical Tool

PARD NO.	Capacity	Reach (mm)	Spread (mm)	Stroke (mm)	Jaw Tip (mm)			(kg)	Box
					A	B	C		
6591005	5 Tons	36-130	-	180	90	160	230	10.3	1



# 液压拉马系列 HYDRAULIC PULLER

series



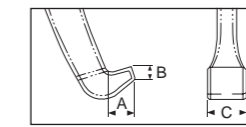
**65911** 液压拉马 - 标准型  
Hydraulic Puller - Standard Type

PARD NO.	Capacity	Reach (mm)	Spread (mm)	Stroke (mm)	(kg)	2	Jaw Tip (mm)		
							A	B	C
6591106	6 Tons	300	90/210	82	8.2	2			
6591108	8 Tons	300	90/210	82	8.7	2			
6591110	10 Tons	300	90/210	82	8.2	2			
6591112	12 Tons	300	90/210	82	8.7	2			



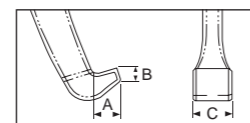
**65913** 液压拉马 - 标准型  
Hydraulic Puller - Standard Type

PARD NO.	Capacity	Reach (mm)	Spread (mm)	Stroke (mm)	Jaw Tip (mm)			(kg)	2
					A	B	C		
6591306	6 Tons	190	90/210	82	15	7	24	12	2
6591308	8 Tons	245	90/210	82	15	7	24	13.5	2
6591310	10 Tons	190	90/210	82	15	7	24	12	2
6591312	12 Tons	245	90/210	82	15	7	24	13.5	2



**65912** 液压拉马 - 标准型  
Hydraulic Puller - Standard Type

PARD NO.	Capacity	Reach (mm)	Spread (mm)	Stroke (mm)	Jaw Tip (mm)			(kg)	2
					A	B	C		
6591206	6 Tons	190	90/210	82	15	7	24	7.8	2
6591208	8 Tons	245	90/210	82	15	7	24	9	2
6591210	10 Tons	190	90/210	82	15	7	24	7.8	2
6591212	12 Tons	245	90/210	82	15	7	24	9	2



**65916** 手动机械拉拔器组套  
Mechanical Tool

PARD NO.	Capacity	Reach (mm)	Spread (mm)	Stroke (mm)	(kg)	4
65916230	5/8 Tons	50	230	150	5.26	4
65916295	5/10 Tons	120	295	230	6.75	4

# 液压拉马系列 HYDRAULIC PULLER

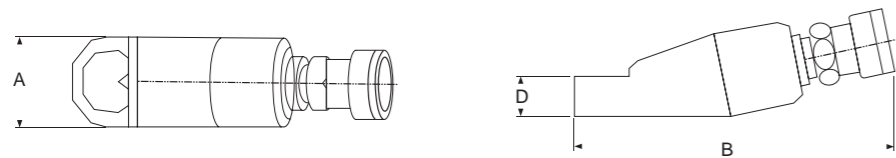


series



## 65917 液压螺母分割器 Hydraulic Nut Splitter

PARD NO.	Capacity at 700 Bar	Oil Capacity (cm <sup>3</sup> )	Hexagon Nut Size (mm)	Bolt Range (mm)	Dimensions (mm)			Weight (kg)	Quantity
					A	B	D		
659171319	5	15	13-19	M6-M12	40	170	48	1.2	12
659171924	10	20	19-24	M12-M16	54	191	62	2	12
659172432	15	60	24-32	M16-M22	64	222	72	3.2	8
659173241	20	80	32-41	M22-M27	75	244	88	4.7	6
659174150	35	155	41-50	M27-M33	94	288	105	8.5	2
659175060	50	240	50-60	M33-M39	106	318	128	12.5	2



## 6591709 液压螺母分割器组套 Hydraulic Nut Splitter

PARD NO.	Weight (kg)	Quantity
6591709	4	5

Contents:

1 - Hydraulic Ram	Ø37.7 mm
1 - 3/8" Splitter Body	
1 - 1/2" Splitter Body	
1 - 5/8" Splitter Body	
1 - 3/4" Splitter Body	
1 - 1" Splitter Body	
1 - Splitter / Ram Adaptor	
5 - Blade	
1 - Oil Jug	



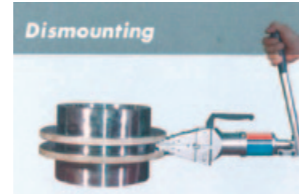
Impact Fitting Tool Kit



6591801 轴承冲击安装工具组套  
Impact Fitting Tool Kit

bearing series		60.. 63.. 16.. 63../	62.. 64.. 62.. 98../	12.. 22.. 13.. 23..	72.. 73..	32.. 52.. 33.. 53..	213.. 222.. 223..	10.. 2.. 22.. 3.. 23..	30.. 31.. 32.. 33..	C22.. C40..	42.. 43..	(g)	4		
<b>A</b> FT 33 FT 39	10/26	629 16100 6000 6200	63000	129								5030	4		
	10/30	6300 6001 16101 6201	62200	1200 2200	7200	3200 5200					4200				
	10/35	6300	62300												
	12/28	6001	63001												
	12/32	6201	62201	1201 2201	7201	3201 5201					4201				
	12/37	6301	62301	1301 2301							4301				
	15/32	16002	63002												
	15/35	6002 6202	62202	1202 2202	7202	3202 5202		202			4202				
	15/42	6302	62302	1302 2302	7302	3302 5302			30302		4302				
	17/35	16003	63003												
	17/40	6003 98203 6203	62203	1203 2203	7203	3203 5203		203 2203	30203		4203				
	17/47	6303	62303	1303 2303	7303	3303 5303		303	30303 32303		4303				
<b>B</b> FT 33 FT 39	20/42	16004 98204 6004 6204	63004												
	20/47	6304	62204	1204 2204	7204	3204 5204		204 2204		30204	4204				
	20/52	6304	62304	1304 2304	7304	3304 5304		22205 / 20 304 2304 1005		30304 32304 32005	4304				
	25/47	16005 6005 62 / 22 98205 6205	63005												
	25/52	6305 65 / 22 6505 6403	62205	1205 2205	7205	3205 5205		22205	205 2205		30205 32205 30305 31305 32305 32006	C 2205	4205		
	25/62	6305	62305	1305 2305	7305 7202	3305 5305		21305	1006			4305			
	30/55	16006 6006 60 / 28 98206 6206	63006												
	30/62	6306 65 / 28 6306 6404	62206	1206 2206	7206	3206 5203		22206 BS2 - 2206	206 2206		30206 32206 30306 31306 32306	C 2206	4206		
	30/72	6306	62306	1306 2306	7306	3306 5306		21306 2306	306			4306			
	<b>C</b> FT 33 FT 39	35/62	16007 6007 6207	63007											
		35/72	6307 6405	62207	1207 2207	7207	3207 5207		22207 BS2 - 2207	207 2207		30207 32207 30307 31307 32307 32008	C 2207	4207	
		35/80	6307 6405	62307	1307 2307	7307	3307 5307		21307	307 2307			4307		
40/68		16008 6008 6208	63008												
40/80		6308 6406	62208	1208 2208	7208	3208 5208		22208 BS2 - 2208	208 2208		30208 32208 30308 31308 32308 32008 32307 / 37	C 2208	4208		
40/90		6308 6406	62308	1308 2308	7308	3308 5308		21308 22308	308 2308			4308			
45/75		16009 6009 6209	63009												
45/85		6309 6407	62209	1209 2209	7209	3209 5209		22209 BS2 - 2209	209 2209		30209 32209 30309 31309 32309 32009 358 x	C 2209	4209		
45/100		6309 6407	62309	1309 2309	7309	3309 5309		21309 22309	309 2309			4309			
50/80		16010 6010	63010												
50/90		6210	62210	1210 2210	7210	3210 5210		22210 BS2 - 2210	210 2210		30210 32210 30310 JM205149	C 2210	4210		
50/110		6310 6408	62310	1310 2310	7310	3310 5310		21310 22310	310 2310			4310			
<b>D</b> FT 39	55/90	16011 6011 6211	63011												
	55/100	6311 6409	62211	1211 2211	7211	3211 5211		22211 BS2 - 2211	211 2211		30211 32211 30311 31311 32311	C 2211	4211		
	55/120	6311 6409	62311	1311 2311	7311	3311 5311		21311 22311	311 2311			4311			
	60/95	16012	63012												
	60/110	6212	62212	1212 2212	7212	3212		22212 BS2 - 2212	212 2212		30212 32212 30312 31312		4212		
	60/130	6312 6410 6411	62213	3312	7312	3312			312 1312 2312			4312			

# 液压拉马系列 HYDRAULIC PULLER series



## 65919 液压钳式分离器 Flange Spreader

PARD NO.	Capacity	Min. Required Access Gap (mm)	Max. Spread	Accessory	Optional Accessory	(kg)	
6591908	8 Tons	1.5	25	Blade×1		6	4
6591910	10 Tons	6	70	Stepped Block ×2; Safety Block ×1	AP - 800 / AP - 1300	8.66	2
6591915	15 Tons	6	70	Stepped Block ×2; Safety Block ×1		9.6	2



## 65920 液压钳式分离器 Flange Spreader

PARD NO.	Capacity	Min. Required Access Gap (mm)	Max. Spread	Optional Accessory	(kg)	
6592012	12 Tons	3	34	AP - 800 / AP - 1300	4.95	4
6592015	15 Tons	3	34		6.25	4



## 65921 内部与外部滑动拉马组套 Internal & External Sliding Puller Set

PARD NO.	(kg)	
6592105	4.5	4

Contents:

- 1 - T-Bar
- 1 - Hammer
- 2 - Internal Puller Spread 15 - 30 mm; 30 - 80 mm
- 1 - External Puller Spread 15 - 80 mm
- 2 - Stopper Cone For Internal Puller
- 1 - Stopper Cone For External Puller
- 2 - Forcing Screw
- 3 - Triple Head
- 9 - Screw & Nut



## 65923 内部与外部滑动拉马组套 Internal Bearing Sliding Puller Set

PARD NO.	(kg)	
6592303	5.5	2

Contents:

- 1 - Slide Bar
- 1 - Hammer
- 2 - Extractor Spread  
Ø17 - 25 mm; Ø25 - 32 mm



## 65922 长型拉马 Long Jaw Bearing Puller

PARD NO.	(kg)	
6592201	1.1	6 / 24

Capacity: Spread 10 ~50 mm

- 1 - Forcing Screw
- 1 - Stopper Cone
- 1 - Connector
- 2 - Jaw



## 65924 内部受力拉杆螺丝组 Internal Bearing Forcing Screw Puller Set

PARD NO.	(kg)	
6592404	4.5	4

Contents:

- 1 - Forcing Screw
- 1 - Central Bolt
- 1 - Twin Head
- 2 - Leg
- 1 - Rotated Socket
- 1 - Bearing Installer
- 2 - Extractor Spread  
Ø17 - 25 mm; Ø25 - 32 mm

# 液压拉马系列 HYDRAULIC PULLER

series



**65925** 2" 三爪拉马  
2" Spread Jaw Lock Puller

PARD NO.	(kg)	
6592502	1.5	12

Capacity: Ø19~45 mm

1 - Forcing Screw
1 - Socket
3 - 3" Jaw



**65925** 5" 三爪拉马  
5" Spread Hydraulic Jaw Lock Puller

PARD NO.	(kg)	
6592505	4.7	4

Capacity: Ø70~120 mm

1 - Hydraulic Ram
1 - Socket
3 - Jaw



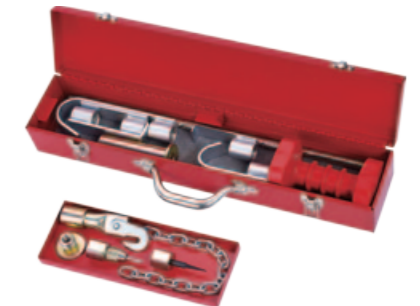
补翻中文

**65927** Mini Internal Bearing Puller Set

PARD NO.	(kg)	
6592705	7	10

Contents:

1 - Beam
2 - Adjustable Rod
1 - Central Bolt
2 - Edge Screw
2 - Spacer Screw
1 - Washer Nut
2 - Inner Claw
8 mm / 10 mm; 12 mm / 15 mm



补翻中文

**65929** Twelve Lbs Dent Puller Set

PARD NO.	(kg)	
6592911	7	2

Contents:

1 - Handle Bar	Ø32 mm×L 130 mm
1 - Slide Bar	Ø16 mm×L 590 mm
5 - Hook	
	W 6 mm×L170 mm; W 6 mm×L90 mm;
	W 6 mm×L110 mm; W 6 mm×L90 mm;
	W 3 mm×L 70 mm
1 - Chain & Hook	
2 - Tapping Screw	



**65925** 4" 三爪拉马  
4" Spread Hydraulic Jaw Lock Puller

PARD NO.	(kg)	
6592504	4	4

Capacity: Ø60~100 mm

1 - Hydraulic Ram
1 - Socket
3 - Jaw



**65926** 2" 三爪拉马  
2" Spread Jaw Lock Puller

PARD NO.	(kg)	
6592602	5.5	2

Capacity: Internal (40~90 mm) External (140 mm)

1 - T-Bar
1 - Hammer
1 - Central Bolt
1 - Stopper Cone
1 - Triple Head
3 - Jaw



补翻中文

**65928** Ten Lbs Nine Pieces Dent Puller Set

PARD NO.	(kg)	
6592811	8.5	2

Contents:

1 - Slide Bar	Ø22.5 mm×L590 mm
1 - Hammer	
5 - Hook	
	W 6 mm×L170 mm; W 6 mm×L120 mm;
	W 6 mm×L120 mm; W 6 mm×L 200 mm;
	W 3 mm×L 100 mm
1 - Two Hole Pipe	Ø29 mm×L 40 mm
1 - Pipe	Ø22.5 mm×L200 mm
1 - Chain & Hook	
1 - Tapping Screw	



**65930** 万能液压轮壳拆卸器  
Universal Hydraulic Hub Puller Set

PARD NO.	(kg)	
6593010	6.6	3

Contents:

1 - Hydraulic Ram	Ø37.7 mm
1 - Sent Pop	Ø1" ×L 30 mm
1 - Ram Extension Rod	Ø1"×L2"
1 - Forcing Screw	
1 - Striking Handle	
1 - Hub Puller Socket	
5 - Hub Puller Legs	

# 液压拉马系列 HYDRAULIC PULLER series



**65931** 液压轮壳拆卸器  
Hydraulic Hub Puller

PARD NO.	(kg)	
6593102	5.5	6
Contents:		
1 - Hydraulic Hub Puller	Ø30.9 mm	
1 - Hub Puller		
1 - Sent Pop		



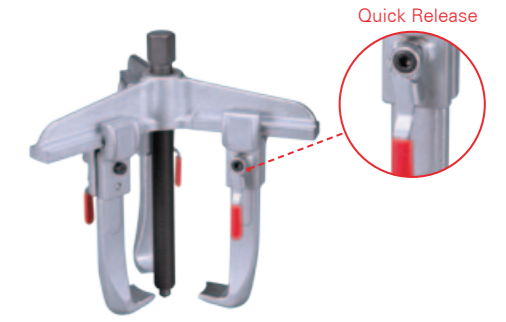
**65914** 二爪调节拉马  
Universal Two-Armed Pullers

PARD NO.	Capacity	Size	Lenth	(kg)	
65914090	3 Tons	90	100	1.1	16
65914130	3 Tons	130	100	1.3	16
65914160	5 Tons	160	150	3.2	6
65914200	5 Tons	200	150	3.6	6
65914250	7.5 Tons	250	200	7.8	2
65914350	7.5 Tons	350	200	9.2	2
65914520	10 Tons	520	200	15.2	1



**6591401** 5件二爪调节拉马组套  
5 pcs Universal Two-Armed Pullers Set

PARD NO.	Size	(kg)	
6591401	90 ; 130; 160; 200; 250	17.8	1



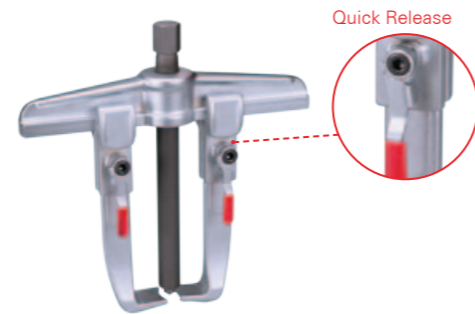
**65915Q** 三爪调节锁紧装置拉马  
Quick Release Three-Armed Pullers

PARD NO.	Capacity	Size	Lenth	(kg)	
65915090Q	3 Tons	90	100	1.4	12
65915130Q	3 Tons	130	100	1.6	12
65915160Q	5 Tons	160	150	3.6	6
65915200Q	5 Tons	200	150	4.2	6
65915250Q	7.5 Tons	250	200	9.3	2



**65932** 多用拉马组套  
Six Ways Multi Purpose Hydraulic Gear Puller

PARD NO.	(kg)	
6593218	4.8	5
Contents:		
1 - Hydraulic Ram	Ø37.7 mm	
1 - Combination Cross Head		
1 - Combination Leg		
6 - Steel Plate		
6 - Screw / Nut / Washer		
1 - Ram Extension Rod	Ø1" × L2"	



**65914** 二爪调节锁紧装置拉马  
Quick Release Two-Armed Pullers

PARD NO.	Capacity	Size	Lenth	(kg)	
65914090Q	3 Tons	90	100	1.1	16
65914130Q	3 Tons	130	100	1.3	16
65914160Q	5 Tons	160	150	3.2	6
65914200Q	5 Tons	200	150	3.6	6
65914250Q	7.5 Tons	250	200	7.8	2
65914350Q	7.5 Tons	350	200	9.2	2
65914520Q	10 Tons	520	200	15.2	1

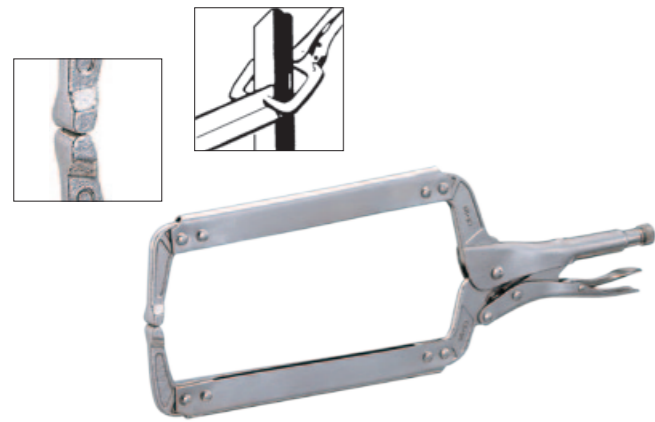


**65915** 三爪调节拉马组套  
Universal Three-Armed Pullers

PARD NO.	Capacity	Size	Lenth	(kg)	
65915090	3 Tons	90	100	1.4	12
65915130	3 Tons	130	100	1.6	12
65915160	5 Tons	160	150	3.6	6
65915200	5 Tons	200	150	4.2	6
65915250	7.5 Tons	250	200	9.3	2

钳子及  
配件系列

PLIERS & ACCESSORIES  
series



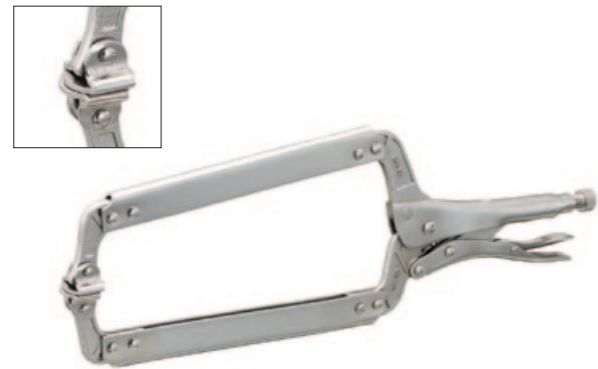
**660** C型大力钳  
C Clamp Locking Pliers

PARD NO.	Size	Jaw Adjustment	(g)	
660150	6" - 150	0-40mm	236	12 / 72
660280	11" - 280	0-90mm	750	10 / 30
660460	18" - 460	0-180mm	1200	5 / 20
660660	24" - 600	0-220mm	1411	1 / 12



**661** 板式大力钳  
Sheet Metal Pliers

PARD NO.	Size	(g)	
661200	8" - 200	458	12 / 48
661250	10" - 250	510	12 / 48



**660B** C型大力钳  
C Clamp Locking Pliers

PARD NO.	Size	Jaw Adjustment	(g)	
660B150	6" - 150	0-40mm	230	12 / 72
660B280	11" - 280	0-90mm	740	10 / 30
660B460	18" - 460	0-180mm	1180	5 / 20
660B660	24" - 600	0-220mm	1410	1 / 12



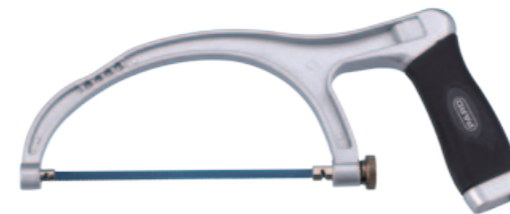
**662** 焊接大力钳  
Welding Clamp Pliers

PARD NO.	Size	(g)	
662230	9" - 230	600	12 / 48
662280	11" - 280	670	10 / 30



**66301** 专业强力手锯  
Super Heavy Duty Hacksaw

PARD NO.		(g)	
66301	300	916	6 / 24



**66302** 袖珍手锯  
Mini Hacksaw

PARD NO.		(g)	
66302	150	218	12 / 72



**66303** 手锯  
Hacksaw

PARD NO.		(g)	
66303	300	349	6 / 24



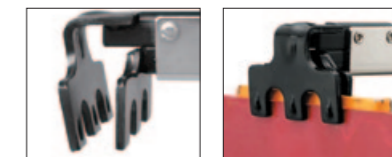
**664194F** 曲口夹持钳  
Self-Locking Multi-Grip Pliers  
Flat Jaw Set at 90° Degrees Angle

PARD NO.	Jaw Adjustment	(g)	
664194F	194	0-12mm	500 6 / 24



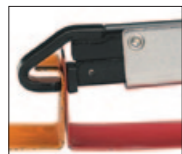
**664195E** L型钣金大力钳  
Self-Locking Multi-Grip Pliers  
Straight Jaws

PARD NO.	Jaw Adjustment	(g)	
664195E	195	0-18mm	450 6 / 24



**664200A** W型钣金大力钳  
Self-Locking Multi-Grip Pliers  
Wide Jaws

PARD NO.	Jaw Adjustment	(g)	
664200A	200	0-12mm	560 6 / 24



**664210D** J型钣金大力钳  
Self-Locking Multi-Grip Pliers  
Angled Jaws

PARO NO.	Jaw Adjustment	(g)	
664210D	210	0-15mm	465



**664230B** JJ型钣金大力钳  
Self-Locking Multi-Grip Pliers  
Double Curved Jaws

PARO NO.	Jaw Adjustment	(g)	
664230B	230	0-10mm	560



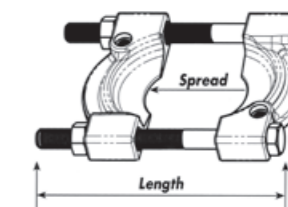
**664215C** LL型钣金大力钳  
Self-Locking Multi-Grip Pliers  
Wide Curved Jaws

PARO NO.	Jaw Adjustment	(g)	
664215C	215	0-10mm	515



**665250** 薄板焊接钳  
Plug Weld Pliers

PARO NO.	Jaw Adjustment	(g)	
665250	10" - 250mm	0-80mm	440



**666** 轴承分离器  
Bearing Separator

PARO NO.	Spread	Length	ØM/mm	ØT/mm	Applicable Product	(kg)	
66605060	5-60	91	M10×1.0	M12	65916130	0.8	24
66615110	15-110	153	M14×1.5	M16	65916130, 65916230, 65916295	2.6	10
66615150	15-150	204	M14×1.5	M20	8-20 Tons	5.5	4
66620180	20-180	289	M22×2.5	M22	25-40 Tons	9.4	2
66625250	25-250	316	M22×2.5	M22	25-50 Tons	12	2
66635170	35-170	289	5/8×18	M20	4-15 Tons	4.9	4



**666** 轴承分离器  
Bearing Separator

PARO NO.	Spread (mm)	Length (mm)	Hole Size	CUFT	(kg)	
6661030	10-30	30	1/4"×20T	1.0	0.4	40
6663050	30-50	50	3/8"×16T	0.3	0.7	20
6665075	50-75	75	3/8"×16T	0.4	1.5	12
66675105	75-105	100	1/2"×16T	0.5	2.6	10
666105150	105-150	150	5/8"×11T	0.6	5.2	5
666150200	150-200	200	3/4"×10T	0.5	10	2

# 配件组套系列 ACCESSORIES SET series



**6661507** 轴承分离器组套  
Hydraulic Separator Puller Set

PARD NO.	(kg)	
6661507	15	2

Contents:

1 - Hydraulic Ram	Ø37.7 mm
1 - Beam	
2 - External Rod	Hex Bar 21 mm×L10"×5/8"
1 - Sent Pop	Ø1"×L30 mm
2 - Ram Extension Rod	Ø1"×L2"; Ø1"×L4"
1 - Adapter	
1 - Bearing Separator	Spread 105 - 150 mm



**66610505** 轴承分离器组套  
Hydraulic Separator Puller Set

PARD NO.	(kg)	
66610505	8.5	2

Contents:

1 - Hydraulic Ram	Ø37.7 mm
1 - Beam	
2 - Main Rod	Hex Bar 19mm×L10"×1/2"
1 - Sent Pop	Ø1"×L30 mm
1 - Bearing Separator	Spread 70 - 105 mm



**66610511** 轴承拉马分离器组套  
Hydraulic Gear Puller Set

PARD NO.	(kg)	
66610511	16	1

\*For Agriculture Machine / Garage / Industry Use

1 - Hydraulic Ram	Ø37.7 mm
1 - Twin Head Triple Head	
1 - Ram Nut	
1 - Beam	
9 - 4"/6"/8" Leg	
1 - Sent Pop	Ø1×L 30 mm
1 - Ram Extension Rod	Ø1"×L2" / L4"
2 - Main Rod	Hex Bar 19 mm×L10"×1/2"×1/2"-16T
2 - Extension Rod	Hex Bar 19 mm×L10"×1/2"×1/2"-16T
1 - Bearing Separator	Spread 75 - 105 mm



**6663009** 袖珍轴承拉马分离器组套  
Mini Bearing Separator Assembly

PARD NO.	(kg)	
6663009	0.7	20

Contents:

1 - Forcing Screw	1/4" -20T×L102 mm
1 - Beam	
	Hex Bar 8 mm × L85 mm×1/4"×20T
2 - Main Rod	
	Hex Bar 8 mm × L40 mm×1/4"×20T
1 - Bearing Separator	Spread 10 - 30 mm
2 - Jaw	L82 mm



**666307512** 轴承分离器组套  
Two Sets Bearing Separator Assembly

PARD NO.	(kg)	
666307512	5	5

Contents:

1 - Forcing Screw	
1 - Beam	
4 - Main / External Rod	Hex Bar 17×L127 mm×3/8"
2 - Bearing Separator	Spread 30 - 50 mm; 50 - 75 mm

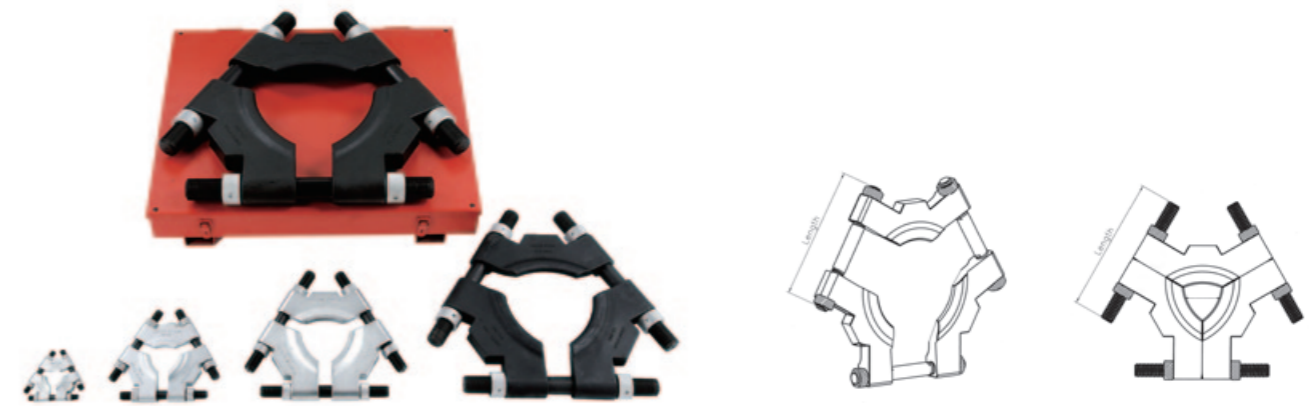


**666105A** 轴承分离器组套  
Pressure Screw Separator Puller Set

PARD NO.	(kg)	
666105A	8.5	2

Contents:

1 - Forcing Screw	Ø18.65-10T×L 292 mm
1 - Center Nut	
1 - Beam	
2 - Main Rod	Hex Bar 19mm×L10"×1/2"-16T
2 - Extension Rod	Hex Bar 19mm×L10"×1/2"-16T
1 - Bearing Separator	Spread 75 - 150 mm



**667** 轴承分离器  
Bearing Separator

PARD NO.	Spread	Length	ØT / mm	Applicable Product	(kg)	
6671250	12 - 50	88	M10	65916130	0.5	24
66726100	26 - 100	154	M16	65916130, 65916230, 65916295	2.6	8
66750160	50 - 160	228	M22	8 - 20 Tons	6.6	4
66790260	90 - 260	344	M32	25 - 40 Tons	30.9	1
667140380	140 - 380	482	M44	25 - 50 Tons	58.5	1

钳子及  
配件系列

PLIERS & ACCESSORIES  
series

PARO®



66904 平锉  
Flat File

PARO NO.				
66904		315	197	12/72



66908 三角锉  
Triangular File

PARO NO.				
66908		315	193	12/72



66905 半圆锉  
Half Round File

PARO NO.				
66905		315	204	12/72



66906 半圆锉  
Round File

PARO NO.				
66906		315	123	12/72



66907 方锉  
Square File

PARO NO.				
66907		315	142	12/72



5056 5件钣金锉刀组套  
5 pcs File Set

PARO NO.		
5056	965	24

Contents:

66904	1 - Flat File
66905	1 - Half Round File
66906	1 - Round File
66907	1 - Square File
66908	1 - Triangular File



67801 铆钉钳  
Rivet Pliers

PARO NO.		
67801	511	36

Size: 2.4; 3.2; 4.0; 4.8 mm  
3/32; 1/8; 5/32; 3/16



67802 盲孔螺母铆钉钳  
Grade Nut Fastener

PARO NO.			
67802	280	582	24

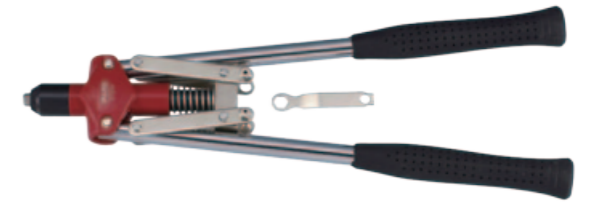
67802S  
Size: M3; M4; M5; M6 缺英制 尺寸



67803 枪型铆钉钳  
Rivet Pliers-Gun Type

PARO NO.		
67803	520	24

Size: 2.4; 3.2; 4.0; 4.8 mm  
3/32; 1/8; 5/32; 3/16



67804 双手柄铆钉钳  
Heavy Duty Rivet Pliers

PARO NO.		
67804	1200	12

Size: 2.4; 3.2; 4.0; 4.8 mm  
3/32; 1/8; 5/32; 3/16



67805 自动塑料扎带锁紧钳  
Tie Tape Pliers

PARO NO.			
67805	170	212	12/72



67806 双手柄铆钉钳  
Heavy Duty Riveter Pliers

PARO NO.		Size		
67806	295 - 11.6"	2.4; 3.2; 4.0; 4.8 (mm) 3/32; 1/8; 5/32; 3/16 (inch)	747	24



# 钳子系列 PLIERS series

**PARD**



**67807** 双手柄铆钉钳  
Heavy Duty Riveter Pliers

PARD NO.	Size (mm)	Size (inch)	(g)	
67807	325 - 12.8"	3.2; 4.0; 4.8; 6.4	1.8; 5/32; 3/16; 1/4	1109 24



**68002** 棘轮压线钳  
Terminal Pliers

PARD NO.	Size	(g)	
68002	0.5; 0.75; 1.0; 1.5; 2.5; 4	233 549	36



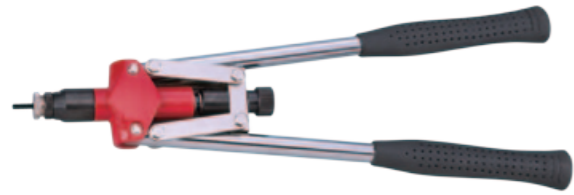
**68005** 管状端子压线钳  
Wire Stripper Pliers

PARD NO.	(g)	
68005	233 311	6/60



**M680** 袖珍端子钳  
Mini Terminal Pliers

PARD NO.	Size	(g)	
M68008	165 - 6.5" 0.8; 1.0; 1.38; 1.6; 2.0; 2.6 mm	110	10/60



**67808** 双手柄铆钉钳  
Heavy Duty Riveter Nut Pliers

PARD NO.	Size	(g)	
67808	5; 6; 8; 10 mm	1865	12
67808S	10-24; 1/4-20; 5/16-18; 3/8-16		



**68003** 棘轮压线钳  
Terminal Pliers

PARD NO.	Size	(g)	
68003	0.5 - 1/1.1 - 2.5/4 - 6	233 535	36



**M680** 袖珍端子钳  
Mini Terminal Pliers

PARD NO.	Size	(g)	
M68006	165 - 6.5" 0.4; 0.5; 0.6; 0.8; 1.0; 1.3mm	110	10/60



**M680** 袖珍端子钳  
Mini Terminal Pliers

PARD NO.	Size	(g)	
M68009	165 - 6.5" 1.8; 2.1; 2.6; 3.3; 4.5 mm	110	10/60



**68001** 双手柄铆钉钳  
Terminal Pliers

PARD NO.	Size	(g)	
68001	Red, Green, Yellow	233 528	36



**68004** 拨线压线断线钳  
Wire Stripper Cutter / Terminal Pliers

PARD NO.	Size	(g)	
68004	210	370	6/60



**M680** 袖珍端子钳  
Mini Terminal Pliers

PARD NO.	Size	(g)	
M68007	165 - 6.5" 0.5; 0.65; 0.8; 1.0; 1.3; 2.0mm	110	10/60



**M680** 袖珍端子钳  
Mini Terminal Pliers

PARD NO.	Size	(g)	
M68010	165 - 6.5" 0.2; 0.3; 0.4; 0.5; 0.6; 0.8 mm	110	10/60

Insul Crimper 10 - 12; 0.5 - 6  
Non Insul 12 - 10; 4 - 6; 22 - 4; 0.5 - 2.5  
Auto 7 - 8mm

# 钳子及 配件系列

## PLIERS & ACCESSORIES

series



**M680** 袖珍剥线钳  
Mini Stripping Pliers

PARD NO.	Size	(g)	10/60
M68011	165 - 6.5"	0.2 - 0.8mm	91



**685** 钢筋断线钳  
Bolt Cutter

PARD NO.	Size	(g)	20
68512	300 - 12"		20
68514	355 - 14"	1060	20
68518	455 - 18"	1520	12
68524	610 - 24"	2360	10
68530	762 - 30"	3770	5
68536	863 - 36"	4720	5
68542	1050 - 42"	8566	3



**68601** 磁性 LED 灯  
LED Magnetic Light

PARD NO.	(g)	12/120
68601	50	12/120



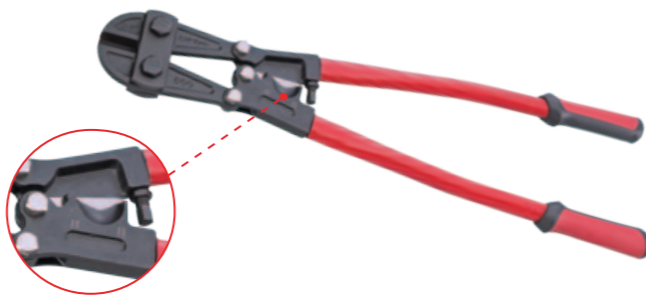
**68604** LED 灯  
Limber Magnetic LED Light

PARD NO.	(g)	12/120
68604	77	12/120



**684** 铸铁美式管钳  
Pipe Wrench

PARD NO.	Size	(g)	24
68410	250 - 10"	710	24
68412	300 - 12"	960	24
68414	355 - 14"	1340	12
68418	455 - 18"	2090	12
68424	610 - 24"	3670	6
68436	915 - 36"	8340	3
68448	1220 - 48"	12kg	2



**685** 3合1断线钳(螺丝、电缆、钢索)  
3 in 1 Cutter (Bolt, Wire, Cable)

PARD NO.	Size	(g)	20
685A14	355 - 14"	1060	20
685A18	455 - 18"	1520	12
685A24	610 - 24"	2360	10
685A30	762 - 30"	3770	5
685A36	863 - 36"	4720	5



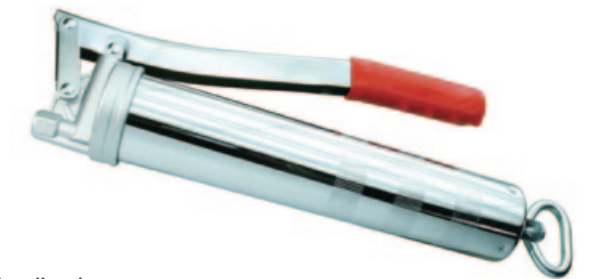
**684A** 轻质合金美式管钳  
Aluminum Pipe Wrench

PARD NO.	Size	(g)	24
684A10	250 - 10"	458	24
684A12	300 - 12"	708	24
684A14	350 - 14"	895	24
684A18	450 - 18"	1500	12
684A24	600 - 24"	2335	6
684A36	900 - 36"	4670	3
684A48	1200 - 48"	6500	2



**68602** Cordless LED Light Rechargeable

PARD NO.	(g)	20
68602	870	20



Applications:



**68701** 杠杆式黄油枪  
Economy Grease Gun

PARD NO.	Capacity		Working Pressure	(kg)	20
	Bulk	Cartridge			
68701	450 cc	14 oz	4300 P.S.I.	1.3	20

Feature:

- Chrome plated finish for long service life
- Short stroke "lever action" for easy use
- Positive lock for easy filling
- Knurled thick wall barrel for secure grip
- Uses standard 14oz. Grease cartridge
- Working Pressure 4300 P.S.I.



**68603** Cordless LED Light-Large Rechargeable

PARD NO.	(g)	20
68603	1130	20

# 黄油枪系列 GREASE GUN series



Applications:



## 68702 重型手动黄油枪 Heavy Duty Manual Grease Gun

PARAD NO.	Capacity		Working Pressure	Weight (kg)	Quantity
	Bulk	Cartridge			
68702	450 cc	14 oz	8000 P.S.I.	1.12	10

### Feature:

- Chrome plated finish for long service life
- Short stroke "lever action" for easy use
- Positive lock for easy filling
- Knurled thick wall barrel for secure grip
- Uses standard 14oz. Grease cartridge
- Working Pressure 8000 P.S.I.
- Come with 6" curved pipe with standard coupler



Applications:



## 68703 经济型手动黄油枪 Economy Grease Gun

PARAD NO.	Capacity		Working Pressure	Weight (kg)	Quantity
	Bulk	Cartridge			
68703	450 cc	14 oz	4300 P.S.I.	1.3	20

### Feature:

- Chrome plated finish for long service life
- Short stroke "lever action" for easy use
- Positive lock for easy filling
- Knurled thick wall barrel for secure grip
- Uses standard 14oz. Grease cartridge
- Working Pressure 4300 P.S.I.



Applications:



## 68704 吸油枪 Oil Suction Gun

PARAD NO.	Capacity Bulk	Weight (kg)	Quantity

### Feature:

- Perfect for transmissions differentials gear cases lower units crankcases, etc.
- No priming necessary
- 10" flexible hose
- Knurled thick wall barrel for secure grip
- 1 Pint capacity



Applications:



## 68705 单手黄油枪 Grip Type Grease Gun

PARAD NO.	Capacity		Working Pressure	Weight (kg)	Quantity
	Bulk	Cartridge			
68705	120 cc	3 oz	2900 P.S.I.	0.7	20

### Feature:

- Chrome plated finish for long service life
- Short stroke "lever action" for easy use
- Vented head cap & Positive lock for easy filling
- Knurled thick wall barrel for secure grip
- Uses standard 3oz. Grease cartridge
- Working Pressure 2900 P.S.I.



Applications:



## 68706 单手黄油枪 Grip Type Grease Gun

PARAD NO.	Capacity		Working Pressure	Weight (kg)	Quantity
	Bulk	Cartridge			
68706	450 cc	14 oz	4300 P.S.I.	1.33	12

### Feature:

- Chrome plated finish for long service life
- Pistol grip "lever action" for easy use
- Vented head cap & positive lock for easy filling
- Knurled thick wall barrel for secure grip
- Uses standard 14oz. Grease cartridge
- Working Pressure 4300 P.S.I.



Applications:



## 68707 袖珍手动黄油枪 Mini Grease Gun

PARAD NO.	Capacity Bulk	Working Pressure	Weight (kg)	Quantity

### Feature:

- Chrome plated finish for long service life
- Working Pressure 80 P.S.I.
- Capacity bulk 80 cc



Applications:



## 83001 气动黄油枪 Air Grease Gun

PARAD NO.	Capacity		Pressure		Weight (kg)	Quantity
	Bulk	Cartridge	Input	Out		
83001	450 cc	14 oz	40~150 P.S.I.	1600~6000 P.S.I.	1.6	10

### Feature:

- 40:1 ratio air motor
- Heavy duty cast aluminum body for maximum durability and longer service life.
- 3-way loading-Bulk, filler pump or 14oz grease cartridge.
- Bleeder valve for purging unwanted air.
- Durable follower rod & spring for consistent priming.
- Positive grip follower handle.
- 4-Jaw super grip coupler for better grip and longer service life.
- Non-Slip knurled better grip.



Applications:



## 83002 14oz 连续气动黄油枪 14 oz Continuous Air Grease Gun

PARAD NO.	Capacity		Pressure		Weight (kg)	Quantity
	Bulk	Cartridge	Input	Out		
83002	450 cc	14 oz	40~100 P.S.I.	1600~4000 P.S.I.	1.7	10

### Feature:

- Heavy duty cast aluminum body for maximum durability and longer service life.
- 3-way loading-Bulk, filler pump or 14oz grease cartridge.
- Bleeder valve for purging unwanted air.
- Working Pressure 40 PSI~100PSI
- Out Pressure 3800 PSI (Working Pressure:90PSI)
- Capacity 400cc (14oz) 288 ml/min
- Air Inlet.....1/4"
- Hose Size.....3/8" I.D.
- Weight.....1.6 Kg

# 气枪系列 AIR BLOW GUN series



**68801** 尼龙头吹尘枪  
Nylon Tip Air Blow Gun

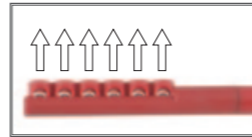
PARD NO.	Image	(g)	Box/Case
68801-4	100 - 4"	242	10/60
68801-10	250 - 10"	250	10/60
68801-16	406 - 16"	266	10/60
68801-28	712 - 28"	275	10/60
68801-40	1016 - 40"	325	10/60

Spare Part:

PARD NO.	Description	Image
68801R1	1/2" Rubber Tip	
68801R2	1" Rubber Tip	
68801R3	1-3/8" Rubber Tip	
68801E1	Air Flow Increases Tip	
68801S1	Air Screen Tip	
68801O1	Safety Booster Tip	
68801O3	Safety Booster Tip	

Specification:

- Body Material: Composite Plastic
- Working Pressure: 90-120 PSI / 6.2-8 KGS
- Max Pressure: 230 PSI / 16KGS
- Air Consumption: 8 CFM (220 L/min)
- Air Inlet Thread  
SAE Size: 1/4" NPT  
Metric Size: 1/4" PT



**68802** 侧孔吹尘枪  
Side Hole Air Blow Gun

PARD NO.	Image	(g)	Box/Case
68802-4	100 - 4"	134	10/60
68802-10	250 - 10"	167	10/60
68802-16	406 - 16"	216	10/60

Specification:

- Body Material: Composite Plastic
- Working Pressure: 90 PSI (6.3 kg/cm<sup>2</sup>)
- Max Pressure: 170 PSI (12 kg/cm<sup>2</sup>)
- Average Air Consumption: 5 CFM (140 L/min)
- Air Inlet Thread : 1/4"



**68803** 换头尼龙吹尘枪  
Nylon Air Blow Gun

PARD NO.	Image	(g)	Box/Case
68803	4"	182	10/60

Spare Part:

PARD NO.	Description	Image
68803R1	1/2" Rubber Tip	
68803R2	1" Rubber Tip	
68803R3	1-3/8" Rubber Tip	
68803E1	Air Flow Increases Tip	
68803S1	Air Screen Tip	
68803O1	Safety Booster Tip	
68803O3	Safety Booster Tip	
68803O4	Safety Needle	
68803D1	1" Nylon Tip	
68803D4	4" Nylon Tip	
68803T1	Cheer Pin	

Specification:

- Body Material: Composite Plastic
- Working Pressure: 90 PSI (6.3 kg/cm<sup>2</sup>)
- Max Pressure: 170 PSI (12 kg/cm<sup>2</sup>)
- Average Air Consumption: 5 CFM (140 L/min)
- Air Inlet Thread : 1/4"



**4" Adjustable Air Blow Gun**

- Air Blow
- With Adjustable Air Flow Tip Regulator To Meet User's Job Requirements.

**68901** 可调式吹尘枪  
Adjustable Air Blow Gun

PARD NO.	Image	(g)	Box/Case
68901	4"	225	30/60

Specification:

- Body Material: Plastic P.O.M
- Nozzle Material: Steel
- Working Pressure: 75-120 PSI / 5.0-8.0 KGS
- Max. Pressure: 150 PSI
- Sound Pressure: 90 dB
- Thread Type: 1/4" NPT Female  
1/4" PS Female
- Temperature Range: -40°F To 140°F

**Extendable & Angle Swivel Air Blow Gun**

- Tube Position Switch Knob
- Gentle Twist Switch



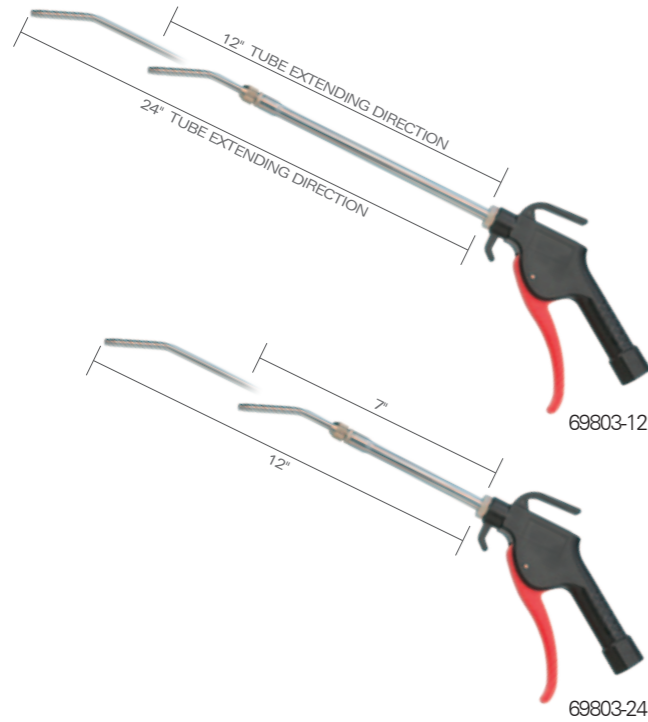
**68902** 可扩展和角度旋转吹尘枪  
Extendable & Angle Swivel Air Blow Gun

PARD NO.	Adjustable Length	(g)	Box/Case
68902	6-1/2"~11"	234	30/60

Specification:

- Body Material: Plastic P.O.M
- Nozzle Material: Steel
- Working Pressure: 75-120 PSI / 5.0-8.0 KGS
- Max. Pressure: 150 PSI
- Sound Pressure: 90 dB
- Thread Type: 1/4" NPT Female  
1/4" PS Female
- Temperature Range: -40°F To 140°F

# 气枪系列 AIR BLOW GUN series



## 68903 可扩展和角度旋转吹尘枪 Extendable & Angle Swivel Air Blow Gun

PARD NO.	管长 (in)	重量 (g)	包装 (个/箱)
68903-12	12"	184g	30/60
68903-24	24"	220g	25/50

### Features:

- Short - tube blow gun
- Long - tube blow gun
- Angle - swivel air blow gun
- Quick & easy setting for operation
- Patented in Taiwan, the USA, Japan, Germany, Mainland China, and many other countries



## 68904 吹尘枪 Air Blow Gun

PARD NO.	管长 (in)	重量 (g)	包装 (个/箱)
68904-4	4"	168	3/60
68904-10	10"	220	25/50
68904-20	20"	260	25/50
68904-30	30"	284	10/60
68904-40	40"	300	10/60

### Specification:

- Body Material: Plastic P.O.M
- Nozzle Material: Steel
- Working Pressure: 78 -120 PSI /5.0 - 8.0 KGS
- Max. Pressure: 160 PSI
- Sound Pressure: 85 - 90 dB
- Thread Type: 1/4" NPT Female  
1/4" PS Female
- Temperature Range: - 40°F To 140°F



## 689501 可调吹尘枪 Adjustable Tip Blow Gun

PARD NO.	重量 (g)	包装 (个/箱)
689501	250	10/40



## 689504 标准安全吹尘枪 Standard Safety Blow Gun

PARD NO.	重量 (g)	包装 (个/箱)
689504	225	10/40



## 689502 3件可调吹尘枪 3 pcs Deluxe Blow Gun Kit

PARD NO.	重量 (g)	包装 (个/箱)
689502	300	10/40

### Contents:

- 1 pc Blow Gun
- 1 pc Adjustable Tip
- 1 pc 4" Extension Tip



## 689505 橡胶头吹尘枪 Rubber Tip Blow Gun

PARD NO.	重量 (g)	包装 (个/箱)
689505	275	10/40



## 689503 标准黄铜尖端吹尘枪 Standard Brass Tip Blow Gun

PARD NO.	重量 (g)	包装 (个/箱)
689503	225	10/40

配件系列 ACCESSORIES

series



**69701** 2" 割刀  
2" Pipe Cutter

PARD NO.	Size	(g)	
69701	2"	195	12/72



**69704** 1-1/2" 自动开割刀  
1-1/2" Auto-Open Pipe Cutter

PARD NO.	Size	(g)	
69704	1-1/2"	188	12/72



**6982050** 管子割刀  
Hose Cutter

PARD NO.		(g)	
6982050	215	127	10/100



**6982S250** 钣金铁剪子(直刀)  
Aviation Tin Snips  
Straight Cut

PARD NO.			(g)	
6982S250	250	38	400	6/36



**69702** 1-1/2" 割刀  
1-1/2" Pipe Cutter

PARD NO.	Size	(g)	
69702	1-1/2"	160	12/72



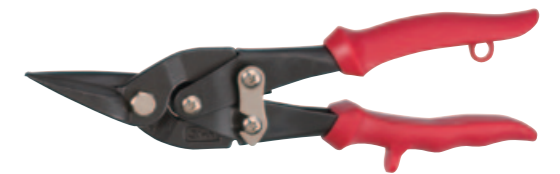
**69705** 38mm PVC 管子割刀  
38mm Pro PVC Pipe Cutter

PARD NO.	Size	(g)	
69705	195	195	12/72



**6982** 直剪  
Straight Shears

PARD NO.		(g)	
6982180	180 - 7"	480	6/36
6982250	254 - 10"	485	6/36
6982300	305 - 12"	650	4/36



**6982L250** 钣金铁剪子(左刀)  
Aviation Tin Snips  
Left Cut

PARD NO.			(g)	
6982L250	248	35	400	6/36



**69703** 2" 自动开割刀  
2" Auto-Open Pipe Cutter

PARD NO.	Size	(g)	
69703	2"	195	12/72



**69706** 26mm 自动开割刀  
26mm Auto-Open Tubing Cutter

PARD NO.	Size	(g)	
69706	26mm	215	12/72



**6982145** 塑料柄电工剪刀  
Technician's Scissors

PARD NO.		(g)	
6982145	145 mm	80	10/80



**6982R250** 钣金铁剪子(右刀)  
Aviation Tin Snips  
Right Cut

PARD NO.			(g)	
6982R250	248	35	400	6/36

# 配件系列 ACCESSORIES

series



**69821** 多用途割刀  
Utility Knife

PARD NO.	Length (mm)	Weight (g)	Quantity
69821	165 mm	142	10 / 100

69821-5

\* 69821-5: 5 Spare Blades Included



**69824** 绝缘剥缆刀  
△ 1000V Insulated Cable Knife

PARD NO.	Length (mm)	Weight (g)	Quantity
69824	150	137	10 / 100



**69827** 割刀带 18 毫米多节刀片  
Snap-Off Pro Knife

PARD NO.	Length (mm)	Blade Length (mm)	Weight (g)	Quantity
69827	165	18	173	12 / 72



**69830** 割刀带 9 毫米多节刀片  
Snap-Off Pro Knife

PARD NO.	Length (mm)	Blade Length (mm)	Weight (g)	Quantity
69830	133	9	15	12 / 120



**69822** 多用途割刀  
Utility Knife

PARD NO.	Length (mm)	Weight (g)	Quantity
69822	125	54	10 / 100



**69825** 不锈钢绝缘剥缆刀  
△ 1000V Insulated Cable Knife

PARD NO.	Length (mm)	Weight (g)	Quantity
69825	150	148	10 / 100



**69828** 割刀带 9 毫米多节刀片  
Snap-Off Pro Knife

PARD NO.	Length (mm)	Blade Length (mm)	Weight (g)	Quantity
69828	130	9	40	12 / 120



**698233** 6" 离亲刀  
HSS Conical Drill Bit

PARD NO.	Length (mm)	Size (mm)	Weight (g)	Quantity
698233	150mm-6"	1~12	15	12 / 72



**69823** 绝缘剥缆刀  
△ 1000V Insulated Cable Knife

PARD NO.	Length (mm)	Weight (g)	Quantity
69823	150	145	10 / 100



**69826** 割刀带 25 毫米多节刀片  
Snap-Off Pro Knife

PARD NO.	Length (mm)	Blade Length (mm)	Weight (g)	Quantity
69826	195	25	254	12 / 72



**69829** 割刀带 18 毫米多节刀片  
Snap-Off Pro Knife

PARD NO.	Length (mm)	Blade Length (mm)	Weight (g)	Quantity
69829	168	18	47	12 / 72



# 配件组套系列 ACCESSORIES SET series



**2071** 7件气动螺旋套筒组套  
7 pcs 1/4" DR. Power Fastener Extractor Set

PARD NO.	Size	(g)	
2071	6; 8; 10; 11; 12; 13; 14 mm	440	40



**2081** 8件倒角螺丝批头组套  
8 pcs 3-Flute Countersink Bit Set

PARD NO.	(kg)	
2081	825	20

Contents:

130 316.3 - 4120.5	6 - 3-Flute Countersink Bit 6.3×31; 8.3×31; 10.4×34; 12.4×35; 16.5×40; 20.5×41 mm
81260Q	1 - Magnetic Quick Release Bit Holder
8145	1 - Quick Release Bit Spinner



**3101** 10件手动螺旋套筒组套  
10 pcs 3/8" DR. Twist Socket Set

PARD NO.	Size	(g)	
3101	10; 11; 12; 13; 14; 15; 16; 17; 19 mm	825	20



**4043** 4件手动螺旋套筒组套  
4 pcs 1/2" DR. Stud Puller Wrench

PARD NO.	Size	(g)	
4043	6; 8; 10; 12 mm	1000	24

**4043S** 4 pcs 1/2" DR. Stud Puller Wrench

PARD NO.	Size	(g)	
4043S	1/4; 5/16; 3/8; 7/16	1000	20



**4052** 5件手动螺旋套筒组套  
5 pcs 1/2" DR. Twist Socket Set

PARD NO.	Size	(g)	
4052	17; 19; 21; 22 mm 50 mmL Bar	805	20



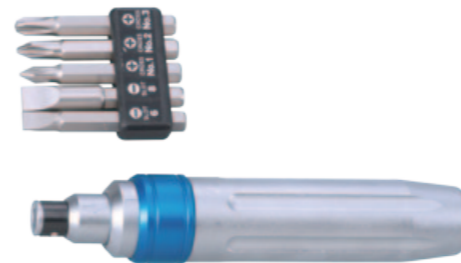
**4053** 5件手动螺旋套筒组套  
5 pcs 1/2" DR. Twist Socket Set

PARD NO.	Size	(g)	
4053	17; 19; 21; 22 mm 150 mmL Bar	825	20/16.5/17.5/0.82



**4062** 6件手动螺旋套筒组套  
6 pcs 1/2" DR. Stud Puller Wrench

PARD NO.	Size	(g)	
4062	6; 7; 8; 10; 12; 14 mm	1200	12
4062S	3/16; 1/4; 5/16; 3/8; 7/16; 1/2	1200	12



**2061** 6件冲击螺丝批组套  
6 pcs Impact Driver Set

PARD NO.	(g)	
2061	455	12 / 48

8172132	1 - Impact Driver
12150 01 ... 3	3 - 1/4" Phillips Bit (50mmL) PH.1; PH.2; PH.3
12350 06 ... 08	2 - 1/4" Slotted Bit (50mmL) 6; 8mm



**4063** 6件冲击螺丝批组套  
6 pcs Impact Driver Set

PARD NO.	(g)	
4063	1095	20

8174145	1 - Impact Driver
15136 2 ... 3	2 - 5/16" Phillips Bit PH.2; PH.3
15336 08 ... 10	2 - 5/16" Slotted Bit 8; 10 mm
81045	1 - Bit Holder 1/2"×5/16"



**4071** 7件手动螺旋套筒组套  
7 pcs 1/2" DR. Stud Puller Wrench

PARD NO.	Size	(g)	
4071	5; 6; 7; 8; 10; 12; 14 mm	1500	12



**4072** 7件车轮锁拆卸组套  
7 pcs 1/2" DR. Wheel-Lock Remover Set

PARD NO.	Size	(g)	
4072	5; 6; 7; 8; 10; 12; 14 mm	915	24



**4085** 8件冲击螺丝批组套  
8 pcs Impact Driver Set

PARD NO.	(g)	
4085	950	20

8174145	1 - Impact Driver
15136 2 ... 3	2 - 5/16" Phillips Bit PH.2; PH.3
151752	1 - 5/16" 75 mmL Phillips Bit PH.2
15336 08 ... 10	2 - 5/16" Slotted Bit 8; 10 mm
1537508	1 - 5/16" 75 mmL Slotted Bit 8 mm
81045	1 - Bit Holder 1/2"×5/16"



# 配件组套系列 ACCESSORIES SET series



**4087** 8 件手动螺旋套筒组套  
8 pcs 1/2" DR. Stud Puller Wrench Set

PARD NO.	Size	(g)	
4087	3/16; 1/4; 5/16; 3/8; 7/16; 1/2; 9/16; 5/8	1940	12



**4114** 11 件手动螺旋套筒组套  
11 pcs 1/2" DR. Stud Puller Wrench Set

PARD NO.	Size	(g)	
4114	5; 6; 7; 8; 9; 10; 10.5; 11; 12; 14; 16 mm	2420	10



**5043** 4 件撬棒组套  
4 pcs Jumbo Heavy Duty Pry Bar Set

PARD NO.	Size	(g)	
5043	24"×45"; 24"×90"; 36"×45"; 36" Straight	8730	2



**50614** 6 件自动锁组套  
6 pcs Self-Locking Multi Grip Pliers Set

PARD NO.	Size	(g)	
50614	664200A; 664230B; 664215C; 664210D 664195E; 664194F	3000	6



**4094** 9 件攻牙组套  
9 pcs Axle Spindle Bethreading Set

PARD NO.	Size	(g)	
4094	M20×1.25; M20×1.50; M22×1.00; M22×1.50; M24×1.50; M24×2.00; 13/16"×20 UNEF; 3/4"×20 UNEF; 27mm Extension	1500	12



**4142** 14 件手动螺旋套筒组套  
14 pcs 1/2" DR. Twist Socket Set

PARD NO.	Size	(g)	
4142	10; 11; 12; 13; 14; 16; 17; 18; 19; 21; 22; 24; 27 mm Bar	1125	24



**50416** 4 件内外卡簧钳组套  
4 pcs Internal-External Circlip Pliers Set

PARD NO.	(kg)	
50416	3.3	6

\* Feature replaceable points and spring ratchet locking mechanism to securely hold against circlip tension.  
Internal: 3 - 1/16" - 6 - 1/4" External: 3 - 1/2" - 6 - 1/2"  
\* Tip Diameter: 0.12" (3 mm)



**4103** 10 件手动螺旋套筒组套  
10 pcs 1/2" DR. Twist Socket Set

PARD NO.	Size	(g)	
4103	1/2DR.x10; 11; 12; 13; 14; 15; 16; 17; 19 mm; Bar	675	20



**4155** 15 件手动螺旋套筒组套  
15 pcs 1/4" & 1/2" DR. Twist Socket Set

PARD NO.	Size	(g)	
4155	1/4"DR.: 6; 8; 10; 11; 12 mm 1/2" DR.: 13; 14; 15; 17; 19; 21; 24; 27 mm 2-Bar	1560	12

**5107** 10 件卡簧钳组套  
10 pcs Snap Ring Pliers Set

PARD NO.	(g)	
5107	1850	10

Contents:	
Plier Size	Tip Size
1-5-1/2" (Bend)	0.038" (1.0mm)
1-6" (Straight)	0.038" (1.0mm)
1-5-1/2" (Bend)	0.047" (1.2mm)
1-6" (Straight)	0.047" (1.2mm)
1-7-1/2" (Bend)	0.070" (1.8mm)
1-8" (Straight)	0.070" (1.8mm)
1-8-1/2" (Bend)	0.090" (2.3mm)
1-9" (Straight)	0.090" (2.3mm)

\* 1-5" Hook Tool  
\* 1-5" Pick Tool



**5139** 13 件卡簧钳组套  
13 pcs Retaining Ring Pliers Set



PARD NO.	(g)	
5139	1850	6

Contents:

Long	Tip Angle	Tip Size
6"	0°	0.038" (1.0mm)
6"	45°	0.038" (1.0mm)
6"	90°	0.038" (1.0mm)
6"	0°	0.047" (1.2mm)
6"	45°	0.047" (1.2mm)
6"	90°	0.047" (1.2mm)
8"	0°	0.070" (1.8mm)
8"	45°	0.070" (1.8mm)
8"	90°	0.070" (1.8mm)
9"	0°	0.090" (2.3mm)
9"	45°	0.090" (2.3mm)
9"	90°	0.090" (2.3mm)
7"	Bend	1/16" (external )



**604** 手动打孔器  
Flanger / Punch Combo Tool

PARD NO.	Size	(g)	
604005	5 mm	1124	16
604006	6 mm	1124	16



**6071** 7 件手动螺旋套筒组套  
7 pcs 1/2" & 3/4" DR. Twist Socket Set

PARD NO.	Size	(g)	
6071	1/2" DR.:	1400	12

22; 24; 27; 32 mm

3/4" DR.:

36; 41 mm

Steel Bar



**604001** 手动打孔器组套  
Hole Punch Key

PARD NO.	(g)	
604001	1330	15

Capacity:

3/32; 1/8; 5/32; 3/16; 7/32; 1/4; 9/32



**656001** 套扩孔器组套 (公制)  
Double Flaring and Cutting Tool Set

PARD NO.	(kg)	
656001	1.8	10

Contents:

656001	1 - Tubing Cutter
	1 - Screenbar
	7 - Adaptor (mm)
	4; 6; 8; 10; 12; 14; 16 mm

**656002** 扩孔器组套 (英制)  
Double Flaring and Cutting Tool Set

PARD NO.	(kg)	
656002	1.8	10

Contents:

656002	1 - Tubing Cutter
	1 - Screenbar
	7 - Adaptor (SAE)
	3/16; 1/4; 5/16; 3/8; 1/2; 7/16; 5/8

**656003** 扩孔器组套  
Double Flaring and Cutting Tool Set

PARD NO.	(kg)	
656003	1.8	10

Contents:

656003	1 - Tubing Cutter
	1 - Screenbar
	7 - Adaptor (mm & SAE)
	4.75; 5; 6; 8; 10; 1/4; 1/2



**656004** 套扩孔器组套 (公制)  
Double Flaring Tool Set

PARD NO.	(kg)	
656004	1.2	18

Contents:

656004	1 - Screenbar
	5 - Adaptor (mm)
	4.75; 5; 6; 8; 10 mm

**656005** 扩孔器组套 (英制)  
Double Flaring Tool Set

PARD NO.	(kg)	
656005	1.2	18

Contents:

656005	1 - Screenbar
	5 - Adaptor (SAE)
	3/16; 1/4; 5/16; 3/8; 1/2